

E3 Modulelevel®

Installation and Operating Manual



*Digital E3 Modulelevel® with
HART® and PACTware™
Communications Liquid
Level Displacer Transmitter*

3.5 Parts

3.5.1 Replacement Transmitter Head Parts

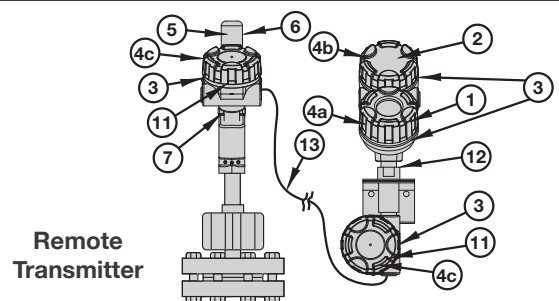
① Electronic Module HART SIL 2	Z31-2844-001*
② Wiring Board	
HART SIL 2	Z30-9151-001
③ Transmitter Housing O-rings (2 required)	012-2201-237
④ Transmitter Housing Cover Kits – Contains parts 4a and 4b	
ATEX/IEC & FM/CSA, aluminum, IS, integral	089-6606-004
ATEX/IEC & FM/CSA, stainless steel, IS, integral	089-6606-005
FM/CSA, aluminum, XP, integral	089-6606-009
FM/CSA, stainless steel, XP, integral	089-6606-010
ATEX/IEC, aluminum, XP, integral	089-6606-013
ATEX/IEC, stainless steel, XP, integral	089-6606-014
FM/CSA, aluminum, XP, remote	089-6606-015
FM/CSA, stainless steel, XP, remote	089-6606-016
FM/CSA, aluminum, IS, remote	089-6606-017
FM/CSA, stainless steel, IS, remote	089-6606-018
④c Terminal Junction Box Covers (2 required)	
FM/CSA, aluminum, XP, remote	Consult Factory
FM/CSA, stainless steel, XP, remote	Consult Factory
FM/CSA, aluminum, IS, remote	Consult Factory
FM/CSA, stainless steel, IS, remote	Consult Factory
⑤ LVDT Kit – Contains parts 5, 8, 9, and 10	
Low Temperature (9 th digit 1 or 4)	089-7827-007*
Mid Temperature (9 th digit 2 or 5)	089-7827-008*
High Temperature (9 th digit 3 or 6)	089-7827-009*
Ultra High Temperature (9 th digit 8)**	089-7827-010*
⑥ LVDT Housing Cover Kits	
Aluminum	089-7837-001
Stainless Steel	089-7837-002
Stainless Steel (For Ultra High Temp LVDT)	089-7837-003
⑦ LVDT Cover O-ring	012-2222-123
⑪ Remote Terminal Boards (2 required)	030-3609-001
⑫ Remote Transmitter Jumper Cable	037-7917-001
⑬ Remote Cable Assembly (last two digits indicate cable length in feet)	
Up to +400° F (+204° C)	037-3226-0xx
Up to +500° F (+260° C)	037-3227-0xx

* Field replacement of this part requires a user calibration of the repaired unit.

** Contains LVDT Core, Item 20.

Parts Identification

1 Electronic Module	7 LVDT Cover O-ring
2 Wiring Board	8 TFE Spacer
3 Transmitter Housing O-rings (2)	9 Grip Ring
4a Meter/Bezel Compartment Cover	10 Top LVDT Spacer
4b Wiring Compartment Housing Cover	11 Remote Terminal Boards (2)
4c Terminal Junction Box Covers (2)	12 Remote Transmitter Jumper Cable
5 LVDT Assembly	13 Remote Cable Assembly
6 LVDT Housing Cover	



Cage Pressure Rating	Head Flange Size	⑰ Head Flange Kit	
		Carbon Steel	316 SS
150# ANSI	3"	89-4242-001	89-4242-017
	4"	89-4242-005	89-4242-021
	6"	89-4242-011	89-4242-027
300# ANSI	3"	89-4242-002	89-4242-018
	4"	89-4242-006	89-4242-022
	6"	89-4242-012	89-4242-028
600# ANSI	3"	89-4242-003	89-4242-019
	4"	89-4242-007	89-4242-023
	6"	89-4242-013	89-4242-029
900# ANSI	3"	89-4242-004	89-4242-020
	4"	89-4242-008	89-4242-024
	6"	89-4242-014	89-4242-030
1500# ANSI	4"	89-4242-009	89-4242-025
	6"	89-4242-015	89-4242-031
	6"	89-4242-010	89-4242-026
2500# ANSI	6"	89-4242-016	89-4242-032

⑱ Displacer Kits*			
	150, 300, 600#		High Pressure 900, 1500, 2500#, Ultra High Temp LVDT
	S.G. Range		S.G. Range
	0.23-0.54 & 0.55-1.09	1.10 - 2.2	0.55 - 1.09
14"	89-6125-001	89-6126-001	89-6125-010
32"	89-6125-002	89-6126-002	89-6125-011
48"	89-6125-003	89-6126-003	89-6125-012
60"	89-6125-004	89-6126-004	89-6125-013
72"	89-6125-005	89-6126-005	n/a
84"	89-6125-006	89-6126-006	n/a
96"	89-6125-007	89-6126-007	n/a
108"	89-6125-008	89-6126-008	n/a
120"	89-6125-009	89-6126-009	n/a

⑲ Cotter pins	
All Units	10-5203-001

Kit Definitions

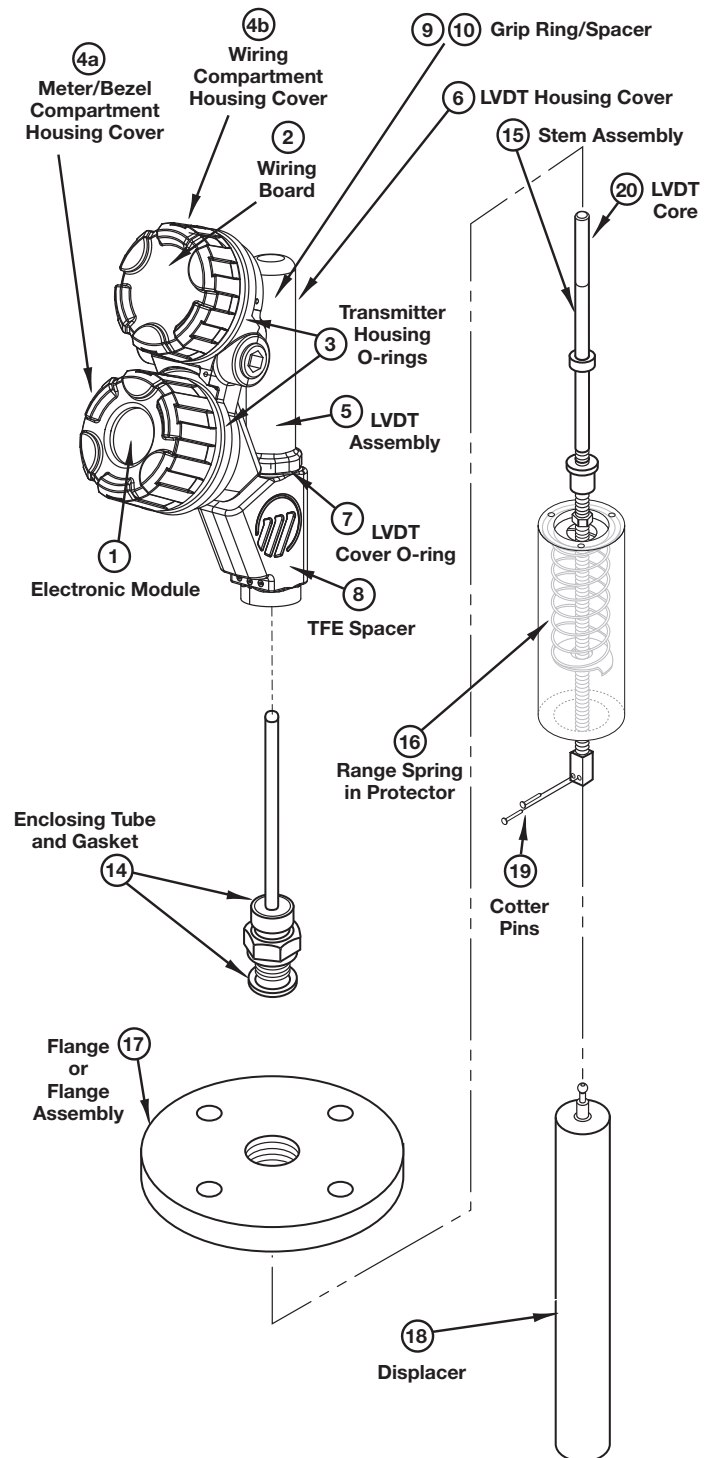
Head flange kit includes: head flange, studs, nuts and gasket (top mounting units) or head flange only (chambered unit)

E-tube kits include: E-tube, E-tube extension(s) and gasket

Stem kits include: stem assembly, stem extension, LVDT core

Spring kits include: spring assembly, screws and lockwashers

Displacer kits include: displacer and cotter pins



3.5.4 Recommended Spare Parts

① Electronic Module	
HART SIL 2	Z31-2844-001*

⑤ LVDT Assembly Kit	
Low Temperature (9 th digit 1 or 4)	89-7827-007*
Mid Temperature (9 th digit 2 or 5)	89-7827-008*
High Temperature (9 th digit 3 or 6)	89-7827-009*
Ultra High Temp (9 th digit 8)**	89-7827-010*

* Field replacement of this part requires a user calibration of the repaired unit.

** Contains LVDT Core, Item 20.