

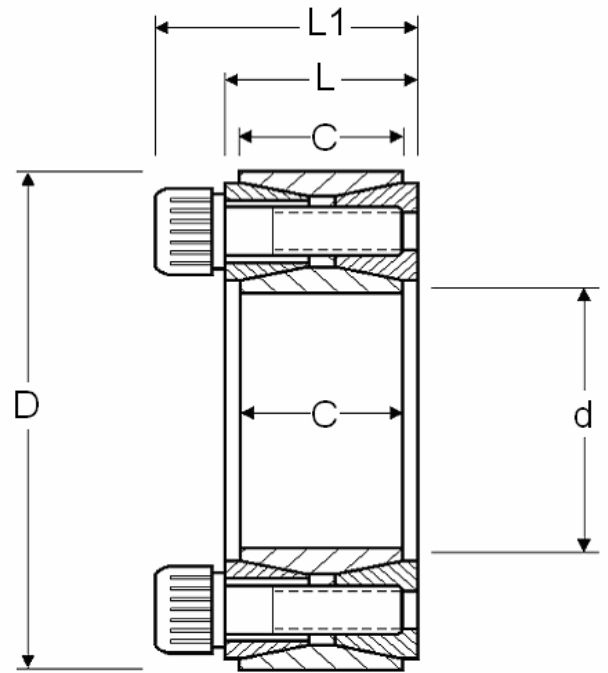
Z-LOCK

INDEX

	TOPIC	PAGE
	INTRODUCTION	1
	TYPICAL APPLICATION	2
Z2	MEDIUM DUTY, NON SELF CENTERING	3-4
Z2	MINIMUM HUB DIAMETERS	5
Z2	FITTING INSTRUCTIONS	6
Z5	HEAVY DUTY, SELF CENTERING	7
Z5	MINIMUM HUB DIAMETERS	8
Z5/Z6	FITTING INSTRUCTIONS	9
Z6	EXTRA HEAVY DUTY, SELF CENTERING	10
Z6	MINIMUM HUB DIAMETERS	11
Z8	MEDIUM DUTY, FLANGED, SELF CENTERING	12
Z8	MINIMUM HUB DIAMETERS	13
Z8	FITTING INSTRUCTIONS	14
ZSD	SHRINK DISCS	15-16
ZSD	FITTING INSTRUCTIONS	17
Z-LOCK	INTERCHANGE CHART	18

Z2 SERIES

LOCKING ASSEMBLIES



Ma = screw tightening torque
Ft = axial holding force when $Mt=0$
Mt = transmissible torque when $Ft=0$
Pf = specific pressure on mating shaft and hub

DIMENSIONS						SCREW			CAPACITIES				
Z - Lock number	d	D	C	L	L1	Size	Qty	Ma Nm	Ft kN	Mt kNm	Pf-N/mm2 Shaft	hub	Wgt kg
Z2-20X47	20	47	17	20	27.5	M6x18	8	17	32	0.32	255	110	0.24
Z2-25X50	25	50	17	20	27.5	M6x18	9	17	36	0.36	230	116	0.25
Z2-30X55	30	55	17	20	27.5	M6x18	10	17	40	0.60	212	116	0.29
Z2-35X60	35	60	17	20	27.5	M6x18	12	17	48	0.85	219	128	0.32
Z2-38X63	38	63	17	20	27.5	M6x18	14	17	52	0.93	219	134	0.33
Z2-40X65	40	65	17	20	27.5	M6x18	14	17	55	1.10	219	134	0.34
Z2-42X72	42	72	20	24	33.5	M8x22	12	41	81	1.38	228	144	0.48
Z2-45X75	45	75	20	24	33.5	M8x22	12	41	84	1.89	246	147	0.57
Z2-50X80	50	80	20	24	33.5	M8x22	12	41	83	2.06	223	135	0.60
Z2-55X85	55	85	20	24	33.5	M8x22	14	41	97	2.65	234	152	0.63
Z2-60X90	60	90	20	24	33.5	M8x22	14	41	97	2.89	210	140	0.69
Z2-65X95	65	95	20	24	33.5	M8x22	16	41	109	3.56	223	152	0.73
Z2-70X110	70	110	24	28	39.5	M10x25	14	83	156	5.45	249	154	1.26
Z2-75X115	75	115	24	28	39.5	M10x25	14	83	155	5.81	231	148	1.33
Z2-80X120	80	120	24	28	39.5	M10x25	14	83	155	6.15	213	142	1.40
Z2-85X125	85	125	24	28	39.5	M10x25	16	83	175	7.44	231	154	1.49
Z2-90X130	90	130	24	28	39.5	M10x25	16	83	174	7.80	213	148	1.53
Z2-95X135	95	135	24	28	39.5	M10x25	18	83	198	9.35	231	160	1.62
Z2-100X145	100	145	29	33	47	M12x30	14	145	223	11.1	226	157	2.01
Z2-110X155	110	155	29	33	47	M12x30	14	145	221	12.2	209	145	2.15
Z2-120X165	120	165	29	33	47	M12x30	16	145	263	15.2	215	157	2.35
Z2-125X170	125	170	29	33	47	M12x30	18	145	285	18.7	191	142	2.95
Z2-130X180	130	180	34	38	52	M12x35	20	145	315	20.4	191	133	3.51
Z2-140X190	140	190	34	38	52	M12x35	22	145	345	24.2	191	145	3.85
Z2-150X200	150	200	34	38	52	M12x35	24	145	376	28.0	197	145	4.07
Z2-160X210	160	210	34	38	52	M12x35	26	145	406	32.3	197	151	4.30
Z2-170x225	170	225	38	44	60	M14x45	22	230	467	39.7	194	145	5.78
Z2-180x235	180	235	38	44	60	M14x45	24	230	505	45.7	200	151	6.05
Z2-190x250	190	250	46	52	68	M14x45	28	230	591	56.3	182	139	8.25

MINIMUM HUB DIAMETER

Z – Lock Series Z2	Pf Hub N/mm	YIELD POINT ($\sigma_{0.2N/mm^2}$)								
		150	180	200	220	250	270	300	350	400
		GG-22	GG-26 GS-38 V2A-S V2A-E	GG-30 V4A-S GTS-35 1020 AS1434	GS-45 ST35 ST37-3 V4A-E 1040 AS1434	GS-52 GS-C25 GGG-40 ST45 1045 AS1434 Gr250 AS3678	C35 ST50-2 X8CrTi17 AlCuNic 1050 AS1434	GS-60 St60-2 C10 GTS-45 Gr300 AS3678	GS-62 St70-2 St52 Gr350 AS3678	GS-70 C60 25CrMo4 Gr400 AS3678
Z2-20X47	110	76	70	68	65	62	62	60	58	56
Z2-25X50	116	84	75	72	70	68	65	64	62	60
Z2-30X55	116	92	84	80	78	74	72	70	68	66
Z2-35X60	128	106	95	90	88	84	82	78	75	74
Z2-38X63	134	120	100	95	92	88	88	82	80	78
Z2-40X65	134	120	106	100	96	92	90	86	82	80
Z2-42X72	144	148	122	110	105	102	100	98	92	88
Z2-45X75	147	148	130	122	115	110	105	102	98	95
Z2-50X80	135	148	135	124	118	112	110	106	102	100
Z2-55X85	152	165	150	140	132	125	122	118	112	108
Z2-60X90	140	170	155	142	135	128	124	120	116	112
Z2-65X95	152	190	168	156	148	140	135	132	125	120
Z2-70X110	154	210	195	182	172	162	158	152	145	140
Z2-75X115	148	228	198	186	176	168	164	158	150	145
Z2-80X120	142	230	202	190	182	172	168	162	155	150
Z2-85X125	154	245	220	208	195	185	180	172	165	160
Z2-90X130	148	258	225	210	200	190	185	178	170	165
Z2-95X135	160	270	245	230	218	205	198	188	180	175
Z2-100X145	157	285	260	245	230	220	210	202	195	185
Z2-110X155	145	305	265	248	238	225	220	210	200	195
Z2-120X165	157	310	298	278	262	248	238	230	220	210
Z2-125X170	142	320	305	280	265	250	240	232	225	220
Z2-130X180	133	328	315	285	272	252	245	240	230	225
Z2-140X190	145	370	325	305	290	275	268	260	250	240
Z2-150X200	145	390	340	320	305	290	280	270	260	250
Z2-160X210	151	410	368	345	328	308	300	290	275	265
Z2-170x225	145	438	382	358	345	325	315	305	295	285
Z2-180x235	151	450	410	385	365	345	335	325	310	300
Z2-190x250	139	468	415	390	375	355	345	335	320	310
Z2-200x260	139	488	430	408	388	370	360	350	335	325
Z2-220x285	138	532	472	445	425	402	392	380	365	355
Z2-240x305	150	570	528	495	470	448	430	415	400	385
Z2-260x325	156	620	580	540	515	482	470	450	430	415
Z2-280x355	138	662	588	552	530	502	490	475	455	445
Z2-300x375	144	725	635	600	570	540	525	510	485	470
Z2-320x405	143	780	682	640	615	580	565	545	525	510
Z2-340x425	137	790	700	660	630	600	585	565	540	525
Z2-360x455	137	845	748	708	675	642	625	605	580	560
Z2-380x475	131	852	760	720	690	658	645	625	600	580
Z2-400x495	125	858	775	735	710	675	660	640	615	600
Z2-420x515	131	925	826	780	750	715	700	675	650	630
Z2-440x545	126	950	852	815	780	742	725	705	665	660
Z2-450x555	124	955	860	820	790	755	735	715	680	670
Z2-460x565	120	960	865	825	800	765	745	725	695	680
Z2-480x585	120	990	896	855	825	790	770	750	720	705
Z2-500x605	120	1025	930	885	855	820	795	775	745	730