



Component Systems

for Lighting Applications



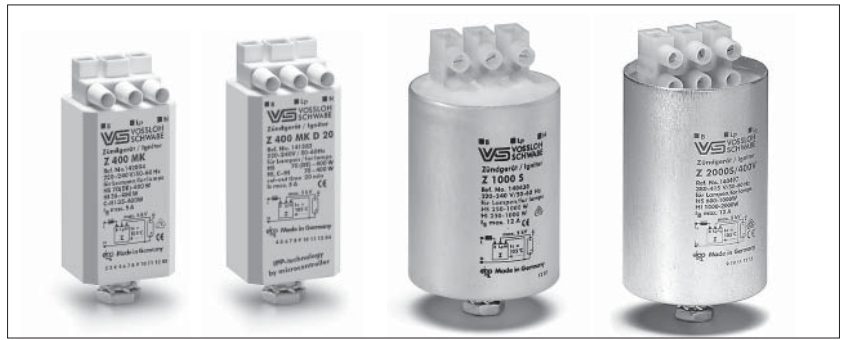
January 2018

- Magnetic and Electronic Ballasts
- Ignitors
- Capacitors
- Electronic LVH Converters
- Emergency Lighting Modules
- Electronic Fluorescent Ballasts
- Lampholders
- Accessories
- Terminal Blocks
- Starters
- Wires
- Surge Protection Devices

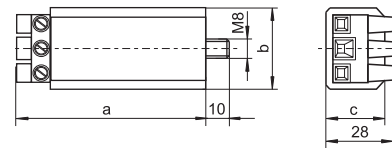
Electronic Superimposed Ignitors for HS and HI Lamps

Standard version

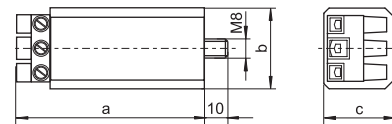
Ignition voltage: 4–5 kV
 Phasing of the ignition voltage:
 60–90 °el and 240–270 °el
 Max. permitted casing temperature: 105 °C
 Screw terminals: 0.75–4 mm²
 (Z 2000: 0.75–2.5 mm²)
 Fastening: male nipple with pre-assembled washer and nut
 For luminaires of protection class I and II



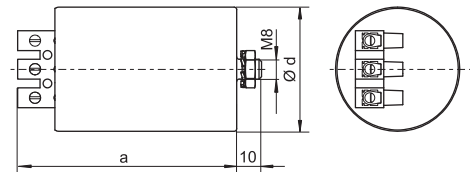
PC casing – K



PC casing – K D20



Al casing



For HS Lamps 70 (DE) to 400 W and HI Lamps 35 to 400 W

For high pressure sodium lamps (HS),
 metal halide lamps (HI) and
 ceramic discharge lamps (C-HI)

| Type | Ref. No. | Voltage AC 50–60 Hz V | Max. lamp current A | Internal loss W | Inherent heating K | Ignition voltage kV | Load capacity pF | Switch-off time sec./Hz | Casing | | | Weight g | Packaging unit Box/pallet | |
|----------------------------|----------------|-----------------------------|---------------------------|-----------------------|--------------------------|---------------------------|------------------------|----------------------------|-------------|---------|---------|-------------|---------------------------------|---------|
| | | | | | | | | | d (∅) mm | a mm | b mm | | | c mm |
| Plastic casing (PC) | | | | | | | | | | | | | | |
| Z 70 K D20 | 141580* | 220–240 | 2 | < 0.6 | < 5 | 1.8–2.3 | 20–100 | 1216/50–60 | — | 80 | 34 | 30 | 145 | 48/2880 |
| Z 400 M K | 142894 | 220–240 | 5 | < 3 | < 35 | 4–5 | 20–50 | — | — | 78 | 34 | 27 | 130 | 60/3600 |
| Z 400 M K D20 | 141582* | 220–240 | 5 | < 3 | < 35 | 4–5 | 20–50 | 1216/50–60 | — | 80 | 34 | 30 | 145 | 48/2880 |

Recommended for outdoor lighting
 * With IPP technology

For HS and HI Lamps 1000 to 2000 W

For high pressure sodium lamps (HS)
 and metal halide lamps (HI)

| Type | Ref. No. | Voltage AC 50–60 Hz V | Max. lamp current A | Internal loss W | Inherent heating K | Ignition voltage kV | Load capacity pF | Switch-off time sec./Hz | Casing | | | Weight g | Packaging unit Box/pallet | |
|------------------------------|---------------|-----------------------------|---------------------------|-----------------------|--------------------------|---------------------------|------------------------|----------------------------|-------------|---------|---------|-------------|---------------------------------|---------|
| | | | | | | | | | d (∅) mm | a mm | b mm | | | c mm |
| Aluminium casing (Al) | | | | | | | | | | | | | | |
| Z 1000 S | 140430 | 220–240 | 12 | < 6 | < 35 | 4–5 | 20–100 | — | 50 | 80 | — | — | 340 | 10/990 |
| Z 2000 S/400 V | 140497 | 380–415 | 12.7 | < 5 | < 32 | 4–5 | 20–2000 | — | 50 | 88 | — | — | 340 | 10/990 |

Reference Numbers

| Ref. No. | Type | Page |
|----------|----------------------|--------|
| 100069 | 02150 Starter holder | 46 |
| 100096 | 02574 Fc2 | 43 |
| 100125 | 03210 E14 screw ring | 23 |
| 100270 | 08610 E27 screw ring | 26 |
| 100273 | 08701 E27 screw ring | 26 |
| 100305 | 09105 G5 | 33 |
| 100442 | 20400 Lamp support | 44 |
| 100444 | 20401 Lamp support | 44 |
| 100557 | 27450 G13 | 38 |
| 100562 | 27700 G13 | 37 |
| 100564 | 27701 G13 | 37 |
| 100710 | 30523 R7s | 21 |
| 100723 | 30602 RX7s | 43 |
| 100912 | 32300 R7s | 21 |
| 100913 | 32301 RX7s | 42 |
| 100931 | 32336 RX7s | 43 |
| 100932 | 32341 RX7s | 42 |
| 101298 | 35004 G23 | 30 |
| 101306 | 35006 G23 | 30 |
| 101320 | 35010 G23 | 31 |
| 101344 | 35051 G23 | 30 |
| 101485 | 36050 2G11 | 32 |
| 101489 | 36051 2G11 | 32 |
| 101491 | 36052 2G11 | 32 |
| 101493 | 36053 2G11 | 32 |
| 101636 | 43300 Starter holder | 46 |
| 101784 | 47900 G13 | 40 |
| 101785 | 47920 G13 | 40 |
| 102599 | 62050 E27 | 41 |
| 103414 | 81093 E14 | 24 |
| 103415 | 81093 E14 | 24 |
| 103424 | 81095 E14 | 24 |
| 103430 | 81109 E14 | 24 |
| 103431 | 81109 E14 | 24 |
| 103467 | 83000 E27 | 27 |
| 103468 | 83000 E27 | 27 |
| 103483 | 83002 E27 | 27 |
| 103484 | 83002 E27 | 27 |
| 103520 | 83011 E27 | 27 |
| 103643 | 83285 E27 | 27 |
| 105775 | 35060 Lamp support | 44, 45 |
| 105776 | 35060 Lamp support | 44 |
| 105777 | 35760 Lamp support | 45 |
| 107154 | 05202 E14 screw ring | 23 |
| 108328 | 29000 G13 | 37 |
| 108331 | 29010 G13 | 37 |
| 108816 | 22604 G13 | 39 |
| 108898 | 35012 G23 | 30 |
| 108936 | 64401 E27 | 25 |
| 108965 | 64501 E27 | 25 |
| 108979 | 31000 GU10, GZ10 | 22 |
| 108984 | 22900 G13 | 39 |
| 109039 | 83007 E27 | 27 |
| 109052 | 83007 E27 | 27 |
| 109077 | 85070 E27 | 26 |
| 109092 | 85070 E27 | 26 |
| 109102 | 81002 E14 | 24 |
| 109103 | 81002 E14 | 24 |
| 109110 | 85075 E14 | 23 |
| 109112 | 85075 E14 | 23 |

| Ref. No. | Type | Page |
|----------|----------------------|------|
| 109162 | 03210 E14 screw ring | 23 |
| 109166 | 05202 E14 screw ring | 23 |
| 109238 | 35611 2G7 | 29 |
| 109240 | 35612 2G7 | 29 |
| 109248 | 09701 Cable grips | 44 |
| 109253 | 09701 Cable grips | 44 |
| 109285 | 08610 E27 screw ring | 26 |
| 109291 | 08701 E27 screw ring | 26 |
| 109383 | 64001 E14 | 23 |
| 109384 | 64001 E14 | 23 |
| 109386 | 64101 E14 | 23 |
| 109387 | 64101 E14 | 23 |
| 109429 | 64501 E27 | 25 |
| 109679 | 97665 E27 | 26 |
| 109680 | 97665 E27 | 26 |
| 109685 | 94088 Lamp support | 44 |
| 109686 | 09170 G5 | 35 |
| 109784 | 02110 Starter holder | 46 |
| 109792 | 43210 Starter holder | 47 |
| 140430 | Z 1000 S | 8 |
| 140497 | Z 2000 S/400 V | 8 |
| 141580 | Z 70 K D20 | 8 |
| 141582 | Z 400 M K D20 | 8 |
| 142738 | SPC 3/230/10 K/i | 48 |
| 142894 | Z 400 M K | 8 |
| 147230 | SP 230/10 K | 48 |
| 147240 | SP230/10 K/HS/i | 48 |
| 161367 | NaHJ 35.485 | 5 |
| 161379 | NaH 50.486 | 5 |
| 161707 | NaHJ 100.941 | 5 |
| 163694 | L 7/9/11.307 | 3 |
| 163711 | LN 13.313 | 3 |
| 163730 | LN 16.316 | 3 |
| 163763 | LN 181.319 | 3 |
| 167263 | Q 125.568 | 4 |
| 167304 | Q 80.588 | 4 |
| 167330 | Q 400.612 | 4 |
| 167367 | Q 250.528 | 4 |
| 169645 | LN 30.801 | 3 |
| 178771 | NaHJ 250.727 | 5 |
| 183033 | EHXc 35.325 | 20 |
| 183035 | EHXc 35.325 | 20 |
| 183036 | EHXc 70.326 | 20 |
| 183038 | EHXc 70.326 | 20 |
| 183039 | ELXc 424.223 | 18 |
| 183040 | ELXc 226.878 | 15 |
| 183046 | EHXc 150G.334 | 20 |
| 183047 | EHXc 150G.334 | 20 |
| 183112 | ELXc 328.230 | 18 |
| 186077 | EST 105/12.381 | 11 |
| 186173 | EST 60/12.635 | 11 |
| 188094 | ELXc 235.857 | 18 |
| 188095 | ELXc 149.858 | 18 |
| 188140 | ELXc 140.862 | 18 |
| 188142 | ELXc 154.864 | 18 |
| 188144 | ELXc 180.866 | 18 |
| 188329 | ELXd 124.600 | 19 |
| 188330 | ELXd 224.601 | 19 |
| 188331 | ELXd 139.602 | 19 |
| 188332 | ELXd 154.603 | 19 |

| Ref. No. | Type | Page |
|----------|----------------|------|
| 188333 | ELXd 254.604 | 19 |
| 188334 | ELXd 180.605 | 19 |
| 188335 | ELXd 249.606 | 19 |
| 188344 | ELXd 118.615 | 19 |
| 188345 | ELXd 218.616 | 19 |
| 188346 | ELXd 136.617 | 19 |
| 188347 | ELXd 236.618 | 19 |
| 188348 | ELXd 158.619 | 19 |
| 188349 | ELXd 258.620 | 19 |
| 188350 | ELXd 239.621 | 19 |
| 188438 | ELXc 414.868 | 18 |
| 188595 | ELXc 336.214 | 17 |
| 188600 | ELXd 324.626 | 19 |
| 188601 | ELXd 318.627 | 19 |
| 188602 | ELXd 424.628 | 19 |
| 188603 | ELXd 418.629 | 19 |
| 188605 | ELXd 280.631 | 19 |
| 188616 | ELXc 240.863 | 18 |
| 188617 | ELXc 249.859 | 18 |
| 188618 | ELXc 254.865 | 18 |
| 188619 | ELXc 280.538 | 18 |
| 188643 | ELXc 242.837 | 15 |
| 188661 | ELXs 116.900 | 14 |
| 188663 | ELXs 121.901 | 14 |
| 188666 | ELXs 124.905 | 14 |
| 188667 | ELXs 126.906 | 14 |
| 188680 | ELXc 155.378 | 15 |
| 188698 | ELXc 213.870 | 15 |
| 188699 | ELXc 218.871 | 15 |
| 188700 | ELXc 142.872 | 15 |
| 188704 | ELXc 136.207 | 17 |
| 188705 | ELXc 236.208 | 17 |
| 188706 | ELXc 158.209 | 17 |
| 188707 | ELXc 258.210 | 17 |
| 188744 | ELXc 418.204 | 17 |
| 188792 | EMXs 180.000 | 13 |
| 188793 | EMXs 180.001 | 13 |
| 188823 | Battery | 13 |
| 188824 | Battery | 13 |
| 188827 | Battery holder | 13 |
| 188828 | Battery holder | 13 |
| 188921 | ELXc 135.220 | 18 |
| 188923 | ELXd 142.709 | 16 |
| 188932 | ELXd 135.724 | 19 |
| 188933 | ELXd 235.725 | 19 |
| 188954 | ELXd 218.707 | 16 |
| 188974 | ELXd 242.711 | 16 |
| 400914 | 12601 E40 | 41 |
| 400916 | 12611 E40 | 41 |
| 500810 | 64401 E27 | 25 |
| 501358 | 64601 E27 | 25 |
| 503010 | NaHJ 35.485 | 5 |
| 504109 | NaHJ 250.340 | 5 |
| 504114 | NaHJ 400.737 | 6 |
| 505054 | NaHJ 250.915 | 5 |
| 505732 | 09404 G5 | 36 |
| 505733 | 09405 G5 | 33 |
| 505734 | 09406 G5 | 33 |
| 505735 | 09415 G5 | 33 |
| 505736 | 09416 G5 | 33 |