

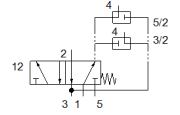
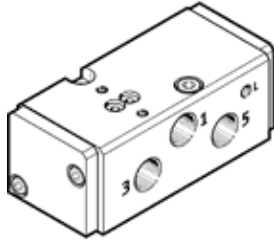
# Basic valve

## VSNB-FC-M52-M-G14-P2

Part number: 547017  
Product to be discontinued

with Namur port pattern per VDE/VDI 3845, without pilot valve, can be changed to 3/2-way

FESTO



## Data sheet

| Feature                                 | Value   |
|---|---|
| Valve function                          | 5/2 and 3/2 monostable  |
| Width                                   | 44.5 mm   |
| Standard nominal flow rate              | 950 l/min   |
| Operating pressure                      | 2.5 ... 8 bar   |
| Design structure                        | Piston slide  |
| Type of reset                           | mechanical spring   |
| Nominal size                            | 8 mm  |
| Exhaust-air function                    | throttleable  |
| Sealing principle                       | soft  |
| Assembly position                       | Any   |
| Conforms to standard                    | VDI/VDE 3845 (NAMUR)  |
| Flow direction                          | non reversible  |
| Freedom from overlap                    | Yes   |
| Pilot pressure                          | 2.5 ... 8 bar   |
| Switching time off                      | 100 ms  |
| Switching time on                       | 30 ms   |
| Duty cycle                              | 100%  |
| Operating medium                        | Compressed air in accordance with ISO8573-1:2010 [7:4:4]                    |
| Note on operating and pilot medium      | Lubricated operation possible (subsequently required for further operation) |
| Corrosion resistance classification CRC | 2   |
| Medium temperature                      | -10 ... 60 °C   |
| Pilot medium                            | Compressed air in accordance with ISO8573-1:2010 [7:-:]                     |
| Ambient temperature                     | -10 ... 60 °C   |
| Product weight                          | 350 g   |
| Mounting type                           | On sub-base   |
| Scavenging orifice connection           | M5  |
| Pneumatic connection, port 1            | G1/4  |
| Pneumatic connection, port 2            | Sub-base  |
| Pneumatic connection, port 3            | G1/4  |
| Pneumatic connection, port 4            | Sub-base  |
| Pneumatic connection, port 5            | G1/4  |
| Materials note                          | Contains PWIS substances<br>Conforms to RoHS                                |
| Materials information for seals         | NBR   |
| Materials information, housing          | Wrought Aluminium alloy<br>Anodised   |
| Screw material data                     | High alloy steel, non-corrosive   |