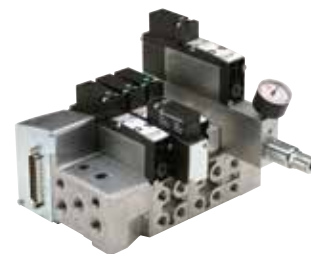


24 VDC or 115 VAC Multipole
Integrated Fieldbus
Field expandable with single add-on stations
Dual spool technology
VS18G Glandless spool and sleeve for long life
VS18S Softseal spool for high flow
Wide range of accessories
ATEX
Universal PNP/NPN 24 VDC Multipole

Technical features
Medium

Compressed air, filtered to 40 µm, lubricated or non-lubricated

Operation

VS18G: Glandless spool valve, solenoid pilot actuated

VS18S: Softseal spool valve, solenoid pilot actuated

Mounting

Sub-base

Ports 2+4

NPTF 1/8, PIF 1/4, PIF 6 and 8 mm, G1/8,

Operating pressure

Maximum pressure

145 psi (10 bar) VS18S models and VS18G solenoid pilot actuated valves with internal pilot supply

232 psi (16 bar) VS18G solenoid pilot actuated valves with external pilot supply

Details of minimum and maximum pilot pressure see overleaf.

Flow characteristics

Series	Function	Cv	L/min
VS18G	5/2	0.56	550
VS18G	5/3	0.56	550
VS18S	2x2/2	0.56	550
VS18S	2x3/2	0.61	600
VS18S	5/2	0.66	650
VS18S	5/3	0.66	650

Ambient temperature:

5°F to 122°F (-15°C to +50°C)

Medium temperature:

23°F to 122°F (-5°C to +50°C)

Consult our technical service for use below 35°F (+2°C).

Materials

Body / sub-base: die-cast aluminum

Glandless spool & sleeve (VS18G): aluminum, hard anodised, PTFE coated

Softseal spool (VS18S): aluminum with HNBR seals

Plastic parts: POM, PA, PPA

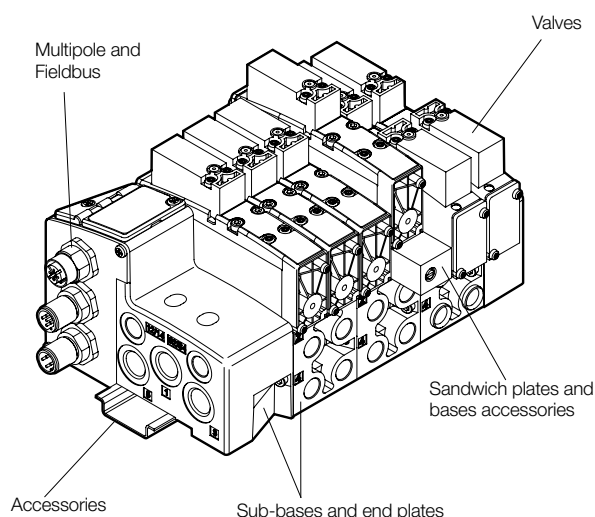
Mounting sheets / screws: steel, zinc coated

Springs: stainless steel

Sandwich plates: aluminum bar material

Electrical contacts: brass, tin/gold coated

PCB: glasepoxy

 To order please use valve manifold configurator available at www.norgren.com/usa.


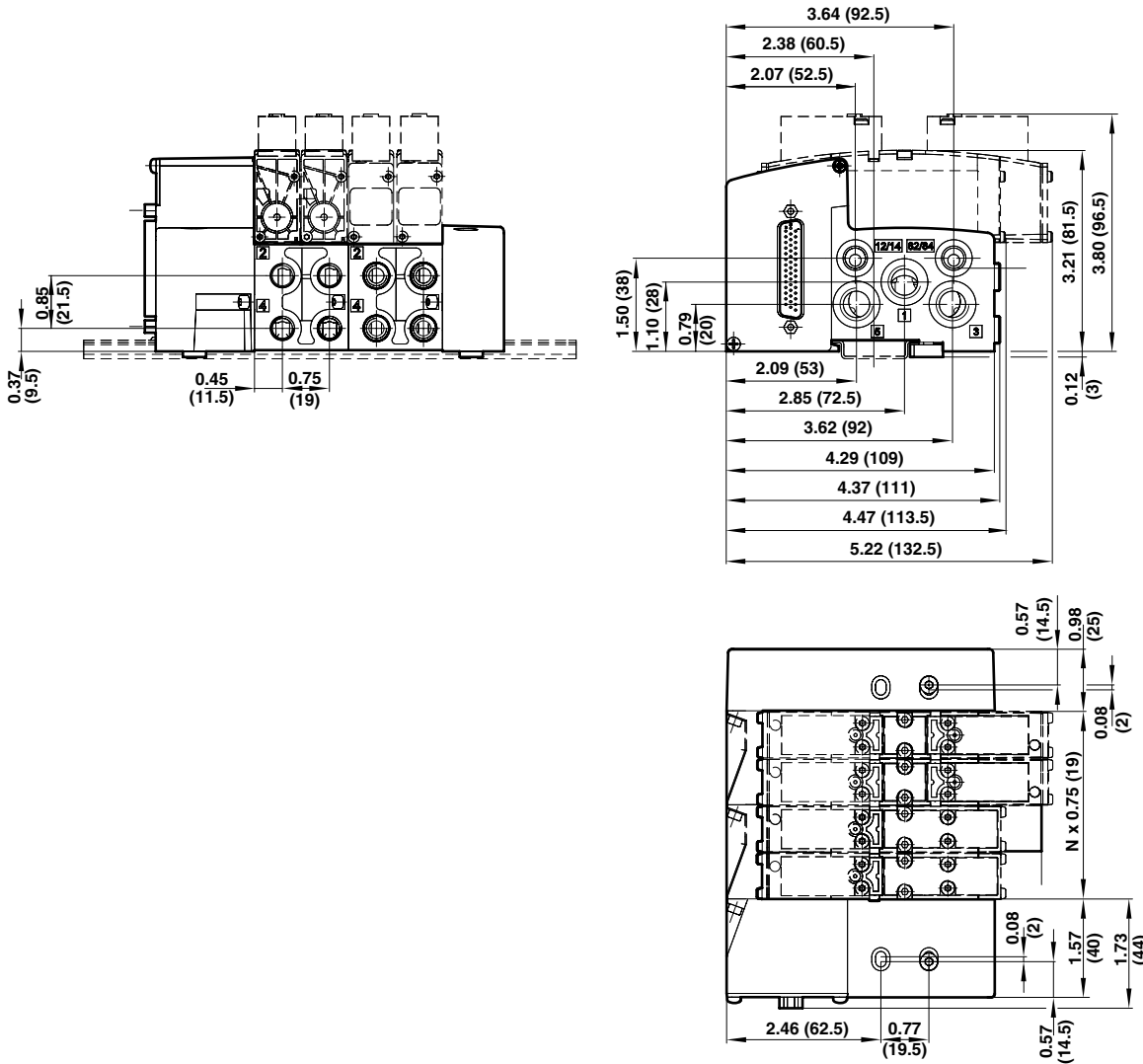
5/2 Single and double solenoid actuated Glandless valves flow = 0.56 Cv (550 l/min)

	Model	Function	Actuation	Pilot supply	Pilot pressure psi (bar)	Operating pressure psi (bar)	Manual override	Voltage
	VS18G511DF313A	5/2	Sol/sol	Internal	-	29 to 145 (2 to 10)	Push only	24 VDC 1.2W
	VS18G511DF318A	5/2	Sol/sol	Internal	-	29 to 145 (2 to 10)	Push only	115 VAC 1.5VA
	VS18G511DF213A	5/2	Sol/sol	Internal	-	29 to 145 (2 to 10)	Push & turn	24 VDC 1.2W
	VS18G511DF218A	5/2	Sol/sol	Internal	-	29 to 145 (2 to 10)	Push & turn	115 VAC 1.5VA
	VS18G511DF513A	5/2	Sol/sol	Internal	-	29 to 145 (2 to 10)	Extended, push only	24 VDC 1.2W
	VS18G511DF518A	5/2	Sol/sol	Internal	-	29 to 145 (2 to 10)	Extended, push only	115 VAC 1.5VA
	VS18G522DF313A	5/2	Sol/sol	External	29 to 145 (2 to 10)	26" Hg to 232 (-0.9 to 16)	Push only	24 VDC 1.2W
	VS18G522DF318A	5/2	Sol/sol	External	29 to 145 (2 to 10)	26" Hg to 232 (-0.9 to 16)	Push only	115 VAC 1.5VA
	VS18G522DF213A	5/2	Sol/sol	External	29 to 145 (2 to 10)	26" Hg to 232 (-0.9 to 16)	Push & turn	24 VDC 1.2W
	VS18G522DF218A	5/2	Sol/sol	External	29 to 145 (2 to 10)	26" Hg to 232 (-0.9 to 16)	Push & turn	115 VAC 1.5VA
	VS18G522DF513A	5/2	Sol/sol	External	29 to 145 (2 to 10)	26" Hg to 232 (-0.9 to 16)	Extended, push only	24 VDC 1.2W
	VS18G522DF518A	5/2	Sol/sol	External	29 to 145 (2 to 10)	26" Hg to 232 (-0.9 to 16)	Extended, push only	115 VAC 1.5VA
	VS18G517DF313A	5/2	Sol/spring	Internal	-	23 to 145 (1.6 to 10)	Push only	24 VDC 1.2W
	VS18G517DF318A	5/2	Sol/spring	Internal	-	23 to 145 (1.6 to 10)	Push only	115 VAC 1.5VA
	VS18G517DF213A	5/2	Sol/spring	Internal	-	23 to 145 (1.6 to 10)	Push & turn	24 VDC 1.2W
	VS18G517DF218A	5/2	Sol/spring	Internal	-	23 to 145 (1.6 to 10)	Push & turn	115 VAC 1.5VA
	VS18G517DF513A	5/2	Sol/spring	Internal	-	23 to 145 (1.6 to 10)	Extended, push only	24 VDC 1.2W
	VS18G517DF518A	5/2	Sol/spring	Internal	-	23 to 145 (1.6 to 10)	Extended, push only	115 VAC 1.5VA
	VS18G527DF313A	5/2	Sol/spring	External	23 to 145 (1.6 to 10)	26" Hg to 232 (-0.9 to 16)	Push only	24 VDC 1.2W
	VS18G527DF318A	5/2	Sol/spring	External	23 to 145 (1.6 to 10)	26" Hg to 232 (-0.9 to 16)	Push only	115 VAC 1.5VA
	VS18G527DF213A	5/2	Sol/spring	External	23 to 145 (1.6 to 10)	26" Hg to 232 (-0.9 to 16)	Push & turn	24 VDC 1.2W
	VS18G527DF218A	5/2	Sol/spring	External	23 to 145 (1.6 to 10)	26" Hg to 232 (-0.9 to 16)	Push & turn	115 VAC 1.5VA
	VS18G527DF513A	5/2	Sol/spring	External	23 to 145 (1.6 to 10)	26" Hg to 232 (-0.9 to 16)	Extended, push only	24 VDC 1.2W
	VS18G527DF518A	5/2	Sol/spring	External	23 to 145 (1.6 to 10)	26" Hg to 232 (-0.9 to 16)	Extended, push only	115 VAC 1.5VA

5/2 Single and double solenoid actuated Softseal valves flow = 0.66 Cv (650 l/min)

	Model	Function	Actuation	Pilot supply	Pilot pressure psi (bar)	Operating pressure psi (bar)	Manual override	Voltage
	VS18S511DF313A	5/2	Sol/sol	Internal	-	29 to 145 (2 to 10)	Push only	24 VDC 1.2W
	VS18S511DF318A	5/2	Sol/sol	Internal	-	29 to 145 (2 to 10)	Push only	115 VAC 1.5VA
	VS18S511DF213A	5/2	Sol/sol	Internal	-	29 to 145 (2 to 10)	Push & turn	24 VDC 1.2W
	VS18S511DF218A	5/2	Sol/sol	Internal	-	29 to 145 (2 to 10)	Push & turn	115 VAC 1.5VA
	VS18S511DF513A	5/2	Sol/sol	Internal	-	29 to 145 (2 to 10)	Extended, push only	24 VDC 1.2W
	VS18S511DF518A	5/2	Sol/sol	Internal	-	29 to 145 (2 to 10)	Extended, push only	115 VAC 1.5VA
	VS18S522DF313A	5/2	Sol/sol	External	29 to 145 (2 to 10)	26" Hg to 145 (-0.9 to 10)	Push only	24 VDC 1.2W
	VS18S522DF318A	5/2	Sol/sol	External	29 to 145 (2 to 10)	26" Hg to 145 (-0.9 to 10)	Push only	115 VAC 1.5VA
	VS18S522DF213A	5/2	Sol/sol	External	29 to 145 (2 to 10)	26" Hg to 145 (-0.9 to 10)	Push & turn	24 VDC 1.2W
	VS18S522DF218A	5/2	Sol/sol	External	29 to 145 (2 to 10)	26" Hg to 145 (-0.9 to 10)	Push & turn	115 VAC 1.5VA
	VS18S522DF513A	5/2	Sol/sol	External	29 to 145 (2 to 10)	26" Hg to 145 (-0.9 to 10)	Extended, push only	24 VDC 1.2W
	VS18S522DF518A	5/2	Sol/sol	External	29 to 145 (2 to 10)	26" Hg to 145 (-0.9 to 10)	Extended, push only	115 VAC 1.5VA
	VS18S517DF313A	5/2	Sol/spring	Internal	-	29 to 145 (2 to 10)	Push only	24 VDC 1.2W
	VS18S517DF318A	5/2	Sol/spring	Internal	-	29 to 145 (2 to 10)	Push only	115 VAC 1.5VA
	VS18S517DF213A	5/2	Sol/spring	Internal	-	29 to 145 (2 to 10)	Push & turn	24 VDC 1.2W
	VS18S517DF218A	5/2	Sol/spring	Internal	-	29 to 145 (2 to 10)	Push & turn	115 VAC 1.5VA
	VS18S517DF513A	5/2	Sol/spring	Internal	-	29 to 145 (2 to 10)	Extended, push only	24 VDC 1.2W
	VS18S517DF518A	5/2	Sol/spring	Internal	-	29 to 145 (2 to 10)	Extended, push only	115 VAC 1.5VA
	VS18S527DF313A	5/2	Sol/spring	External	29 to 145 (2 to 10)	26" Hg to 145 (-0.9 to 10)	Push only	24 VDC 1.2W
	VS18S527DF318A	5/2	Sol/spring	External	29 to 145 (2 to 10)	26" Hg to 145 (-0.9 to 10)	Push only	115 VAC 1.5VA
	VS18S527DF213A	5/2	Sol/spring	External	29 to 145 (2 to 10)	26" Hg to 145 (-0.9 to 10)	Push & turn	24 VDC 1.2W
	VS18S527DF218A	5/2	Sol/spring	External	29 to 145 (2 to 10)	26" Hg to 145 (-0.9 to 10)	Push & turn	115 VAC 1.5VA
	VS18S527DF513A	5/2	Sol/spring	External	29 to 145 (2 to 10)	26" Hg to 145 (-0.9 to 10)	Extended, push only	24 VDC 1.2W
	VS18S527DF518A	5/2	Sol/spring	External	29 to 145 (2 to 10)	26" Hg to 145 (-0.9 to 10)	Extended, push only	115 VAC 1.5VA

Valve manifolds dimensions



\overline{N} Number of station

Dimensions in inches (mm)

Electrical connection	Min. no. of valve stations	Max. no. of valve stations
Multipole	2	16
AS-Interface	2	8
Other Fieldbus protocols	4	16