

Type UF

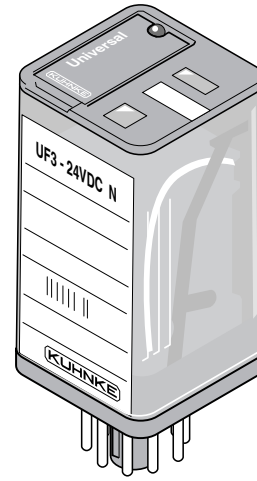
Universal Relays™

Kuhnke Modular Relay Group

Heavy Duty General Purpose Relays 10 Amp. 2 or 3 Poles

Features:

- Industry standard octal type socket.
- Standard version includes mechanical flag, push to test button and override lever (latch to test).
- Easy to read label and diagram.
- Options include LED's and surge suppressors.
- Complete set of sockets and accessories including timing module.
- 4 contact options provide wide switching range.
- All major world standard approvals.



Kuhnke's Universal Relays are heavy duty general purpose devices which fit standard 8 or 11 pin tube type sockets and are interchangeable with similar relays from other manufacturers. Universal Relays are designed for rugged industrial control applications. Standard types are rated 10 amperes, 250 volts maximum, include a mechanical flag, latching lever and push-to-test button. Contacts are made of a silver nickel alloy. Other types include bifurcated (twin) contacts for dusty environments or low power level switching (gold clad). Color coded test buttons help identify coil circuits, red for AC, green for DC.

General Specifications

Contact Configuration:	DPDT or 3PDT (Form C)
Current Rating-	
Standard Contacts:	10 Amperes
Bifurcated Contacts:	4 Amperes
Gold Clad Contacts:	Min. 1 mA @ 100 mV DC
Max. Voltage:	250 Volts AC
Horsepower Rating:	1/4 @ 120 V / 1/3 @ 240 V
Coil Pwr. Consumption:	1.5 W (DC), 2.5 VA (AC)
Oper. Time (approx.):	Pick-up - 12 ms
	Drop-out - 10 ms
Weight without socket:	3 oz. (90 g)
Overall Dimensions:	2 3/4" High x 1 3/8" Sq.

For complete specifications see page 23.

Catalog Numbering System

Typical Catalog Number:

UF	3	G -	120VAC	1L
Relay Type	No. of Contacts	Contact Material	Coil Voltage	Options
	(2 or 3 Pole)	(See Below)		(See Below)

Contact Materials:

- No code Letter** - Standard Contact, Silver Nickel Alloy.
- B** - Standard Contact, Silver Nickel with Gold cladding.
- F** - Bifurcated (Twin) Contacts, Silver Nickel Alloy.
- G** - Bifurcated Contacts, Silver Nickel with Gold cladding.

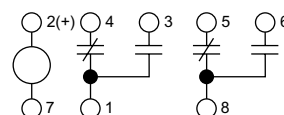
Options (Suffixes):

- 1** - With mech. flag, push-to-test button and override lever.
- N** - Without override lever, with mech. flag and test button.
- F** - With built in surge suppressor (DC -polarity dependent).
- L** - Including LED (pilot light).



Wiring Diagram

2 Pole Relay



3 Pole Relay

