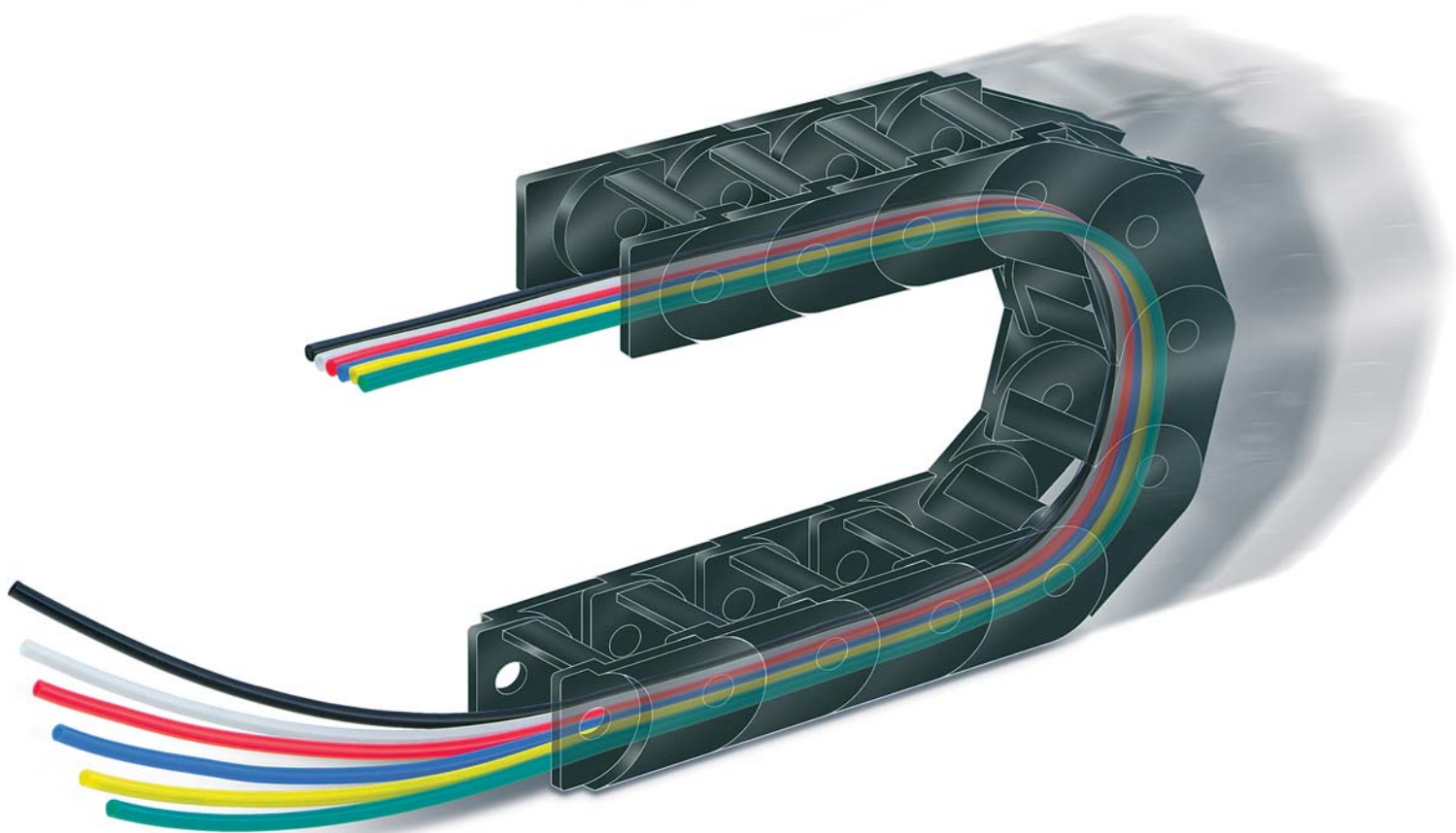


Wear Resistant Tubing

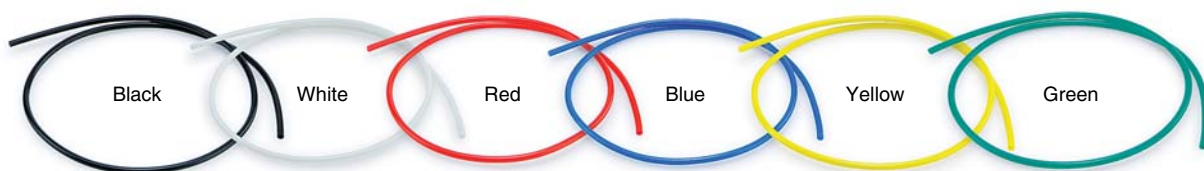
Abrasion: Approx. $\frac{1}{3}$
 (Compared with SMC polyurethane tubing TU series)

Description	Maximum abrasion (mm) After 10 million cycles
Wear resistant tubing TUZ series	0.16
Polyurethane tubing TU series	0.46

Note) Comparison based on the SMC's specific testing condition



6-color variations



5-size variations



Series **TUZ**

Wear Resistant Tubing Series TUZ



Model

● — 20 m roll □ — 100 m roll

Model	TUZ0425	TUZ0604	TUZ0805	TUZ1065	TUZ1208
Tubing O.D. (mm)	4	6	8	10	12
Tubing I.D. (mm)	2.5	4	5	6.5	8

Black (B)	●	●	●	●	●
White (W)	●	●	●	●	●
Red (R)	●	●	●	●	●
Blue (BU)	●	●	●	●	●
Yellow (Y)	●	●	●	●	●
Green (G)	●	●	●	●	●

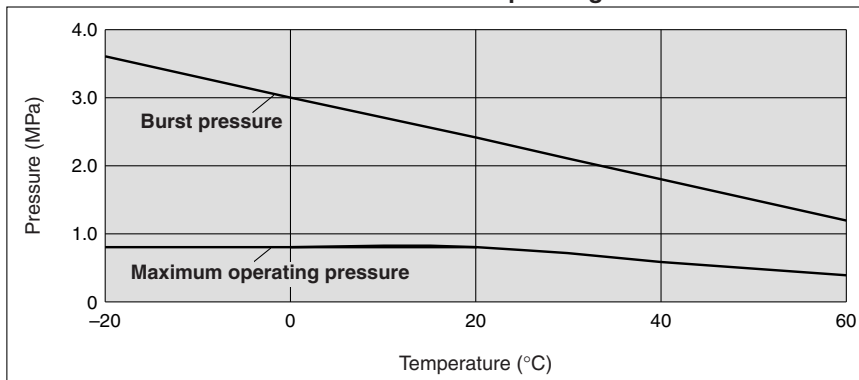
Specifications

Fluid	Air				
Applicable fittings	One-touch fittings KQ/KJ series, Insert fittings KF series, Stainless steel 316 insert fittings KFG series, Miniature fittings M/MS series (hose nipple type)				
Max. operating pressure	20°C	0.8 MPa			
	60°C	0.4 MPa			
Burst pressure	Refer to the burst pressure characteristics curve.				
Min. bending radius (mm)	10	15	20	27	35
Operating temperature	-20 to +60°C				
Material	Special polyurethane				

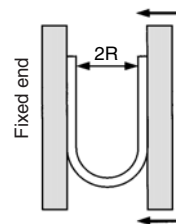
Note 1) The minimum bending radius means the value measured by the method shown in the figure at the right at the temperature of 20°C when the tube is bent. The minimum bending radius assumes static piping. If the tube is used in a moving part, provide extra length to the tube. Check the bending radius recommended by the flexible protection tube manufacturer for sure if the tube is used in the flexible protection tube.

Note 2) Not clear, but opaque due to material.

Burst Pressure Characteristics Curve and Operating Pressure



How to Calculate Minimum Bending Radius



Bend the tube into U-form at the temperature of 20°C. Fix one end and close loop gradually. Measure 2R when the tube breaks or is crushed.

How to Order

TUZ0425 BU - 20

Tubing model

Model	O.D. x I.D. (mm)
TUZ0425	4 x 2.5
TUZ0604	6 x 4
TUZ0805	8 x 5
TUZ1065	10 x 6.5
TUZ1208	12 x 8

Color

Symbol	Color
B	Black
W	White
R	Red
BU	Blue
Y	Yellow
G	Green

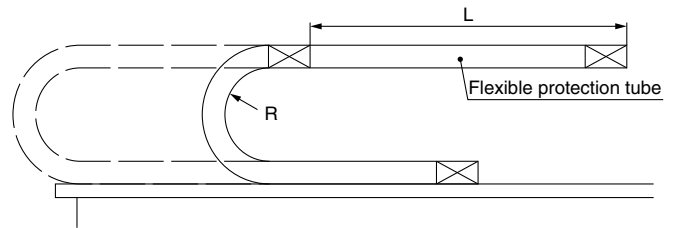
Length per roll

Symbol	Length
20	20 m roll
100	100 m roll

Reference Data: Abrasion due to Flexible Protection Tube

Test Conditions

Test tube	TUZ0604, TU0604
Quantity of tube tested	5 pcs. for each
Operating speed	1500 mm/sec
Operating frequency	90 c.p.m
Stroke L	500 mm
Bending radius R	28 mm
Material of flexible protection tube	Special engineering plastic
Tube tie	Not used



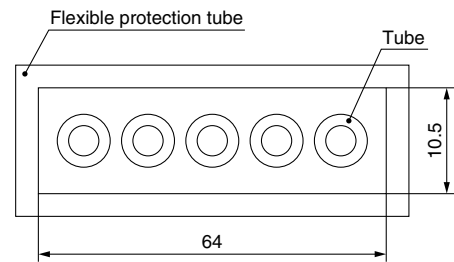
Test Results

Model	Maximum abrasion after 10 million cycles (mm)
TUZ0604	0.16
TU0604	0.46

As this test was an acceleration test, the tube bending radius was out of the flexible protection tube manufacturer's allowable range.

When the flexible protection tube is used in the actual application, check the manufacturer's catalog specifications.

The values in the table above are representative values, and not guaranteed.



Tube dimensions inside the flexible protection tube

Made to Order TFU-X73

Flat type of the TUZ series

The identification line is not shown. Color combinations are also available.

Please contact SMC for detailed specifications, dimensions, and delivery.

How to Order

TFU0425 BU - 2 - 10 - X73

Color

Symbol	Color
B	Black
W	White
R	Red
BU	Blue
Y	Yellow
G	Green

Special polyurethane

Length per roll

Number of cores

Tubing model


Model	O.D. x I.D. (mm)
TFU0425	4 x 2.5
TFU0604	6 x 4
TFU0805	8 x 5
TFU1065	10 x 6.5
TFU1208	12 x 8





Safety Instructions

These safety instructions are intended to prevent hazardous situations and/or equipment damage. These instructions indicate the level of potential hazard with the labels of “**Caution**,” “**Warning**” or “**Danger**.” They are all important notes for safety and must be followed in addition to International Standards (ISO/IEC), Japan Industrial Standards (JIS)*1) and other safety regulations*2).

- * 1) ISO 4414: Pneumatic fluid power – General rules relating to systems.
ISO 4413: Hydraulic fluid power – General rules relating to systems.
IEC 60204-1: Safety of machinery – Electrical equipment of machines. (Part 1: General requirements)
ISO 10218-1992: Manipulating industrial robots -Safety.
JIS B 8370: General rules for pneumatic equipment.
JIS B 8361: General rules for hydraulic equipment.
JIS B 9960-1: Safety of machinery – Electrical equipment of machines. (Part 1: General requirements)
JIS B 8433-1993: Manipulating industrial robots - Safety.
etc.
- * 2) Labor Safety and Sanitation Law, etc.

 **Caution:** Operator error could result in injury or equipment damage.

 **Warning:** Operator error could result in serious injury or loss of life.

 **Danger :** In extreme conditions, there is a possibility of serious injury or loss of life.

Warning

1. The compatibility of the product is the responsibility of the person who designs the equipment or decides its specifications.

Since the product specified here is used under various operating conditions, its compatibility with specific equipment must be decided by the person who designs the equipment or decides its specifications based on necessary analysis and test results. The expected performance and safety assurance of the equipment will be the responsibility of the person who has determined its compatibility with the product. This person should also continuously review all specifications of the product referring to its latest catalog information, with a view to giving due consideration to any possibility of equipment failure when configuring the equipment.

2. Only personnel with appropriate training should operate machinery and equipment.

The product specified here may become unsafe if handled incorrectly. The assembly, operation and maintenance of machines or equipment including our products must be performed by an operator who is appropriately trained and experienced.

3. Do not service or attempt to remove product and machinery/equipment until safety is confirmed.

1. The inspection and maintenance of machinery/equipment should only be performed after measures to prevent falling or runaway of the driven objects have been confirmed.

2. When the product is to be removed, confirm that the safety measures as mentioned above are implemented and the power from any appropriate source is cut, and read and understand the specific product precautions of all relevant products carefully.

3. Before machinery/equipment is restarted, take measures to prevent unexpected operation and malfunction.

4. Contact SMC beforehand and take special consideration of safety measures if the product is to be used in any of the following conditions.

1. Conditions and environments outside of the given specifications, or use outdoors or in a place exposed to direct sunlight.

2. Installation on equipment in conjunction with atomic energy, railways, air navigation, space, shipping, vehicles, military, medical treatment, combustion and recreation, or equipment in contact with food and beverages, emergency stop circuits, clutch and brake circuits in press applications, safety equipment or other applications unsuitable for the standard specifications described in the product catalog.

3. An application which could have negative effects on people, property, or animals requiring special safety analysis.

4. Use in an interlock circuit, which requires the provision of double interlock for possible failure by using a mechanical protective function, and periodical checks to confirm proper operation.



Safety Instructions

Caution

The product is provided for use in manufacturing industries.

The product herein described is basically provided for peaceful use in manufacturing industries.

If considering using the product in other industries, consult SMC beforehand and exchange specifications or a contract if necessary. If anything is unclear, contact your nearest sales branch.

Limited Warranty and Disclaimer/Compliance Requirements

The product used is subject to the following “Limited Warranty and Disclaimer” and “Compliance Requirements”. Read and accept them before using the product.

Limited Warranty and Disclaimer

1. The warranty period of the product is 1 year in service or 1.5 years after the product is delivered.*3)

Also, the product may have specified durability, running distance or replacement parts. Please consult your nearest sales branch.

2. For any failure or damage reported within the warranty period which is clearly our responsibility, a replacement product or necessary parts will be provided.

This limited warranty applies only to our product independently, and not to any other damage incurred due to the failure of the product.

3. Prior to using SMC products, please read and understand the warranty terms and disclaimers noted in the specified catalog for the particular products.

*** 3) Vacuum pads are excluded from this 1 year warranty.**

A vacuum pad is a consumable part, so it is warranted for a year after it is delivered.

Also, even within the warranty period, the wear of a product due to the use of the vacuum pad or failure due to the deterioration of rubber material are not covered by the limited warranty.

Compliance Requirements

When the product is exported, strictly follow the laws required by the Ministry of Economy, Trade and Industry (Foreign Exchange and Foreign Trade Control Law).



Series TUZ

Specific Product Precautions

Be sure to read before handling.

Refer to back pages 1 and 2 for Safety Instructions, "Handling Precautions for SMC Products" (M-E03-3) for Fittings and Tubing Precautions.

Selection

Warning

1. Confirm the specifications.

Products represented in this catalog are designed only for use with compressed air system applications (including vacuum). Do not use at pressure or temperature beyond the range of specifications, as this can cause damage or malfunction. (Refer to the specifications.)

2. In case of using the product for medical care

This product is designed for use with compressed air system applications for medical care purposes. Do not use in transfer applications to a human living body, or in contact with human bodily fluids, body tissues.

Caution

1. Do not use in locations where the connecting threads and tube connection will slide or rotate.

The connecting threads and tube connection will come apart under these conditions.

Use rotary type one-touch fittings (KS, KX series) in cases where sliding or rotation will occur.

2. Use the tube at or above the minimum bending radius. Using below the minimum bending radius can cause breakage or flattening of the tube.

3. Never use the tube for anything flammable, explosive or toxic such as gas, fuel gas, or cooling mediums, etc.

Because the contents may penetrate outward.

4. Use the suitable fittings for the tube size.

Mounting

Caution

1. Confirm model number, size, etc. before installing.

Check if there is damage, gouge, crack, etc. on the tube.

2. When the tube is connected, consider factors such as changes in the tubing length due to pressure, and allow sufficient leeway.

3. Do not apply unnecessary forces such as twisting, pulling, moment loads, etc. on fittings and tube.

This will cause damage to fittings or flattening, bursting or disconnection of tube, etc.

4. Mount so that tube is not damaged due to tangling.

This will cause flattening, bursting or disconnection of tube, etc.

Piping

Caution

1. Preparation before piping

Before piping is connected, it should be thoroughly blown out with air (flushing) or washed to remove chips, cutting oil and other debris from inside the pipe. Not allowing chips of the piping thread or the seal material to go in.

The minimum bending radius assumes static piping. If the tube is used in a moving part, provide extra length to the tube. Check the bending radius recommended by the flexible protection tube manufacturer for sure if the tube is used in the flexible protection tube.

Air Supply

Warning

1. Types of fluid

This product is designed for use with compressed air.

2. In case of excessive condensation

Excessive condensation in compressed air may cause malfunction of pneumatic devices. Installation of an air dryer, water separator before filter is recommended.

3. Drain flushing

If condensation in the drain bowl of an air filter is not emptied on a regular basis, the condensation will enter the outlet side, causing malfunction of pneumatic devices.

If the drain flushing is difficult, installation of a filter with an auto drain option is recommended.

For compressed air quality, refer to SMC's "Air Preparation Equipment Model Selection Guide."

Operating Environment

Warning

1. Do not use in locations having an explosive atmosphere.

2. Do not operate in locations where vibration or impact occurs.

3. In locations near heat sources, block off radiated heat.

Maintenance

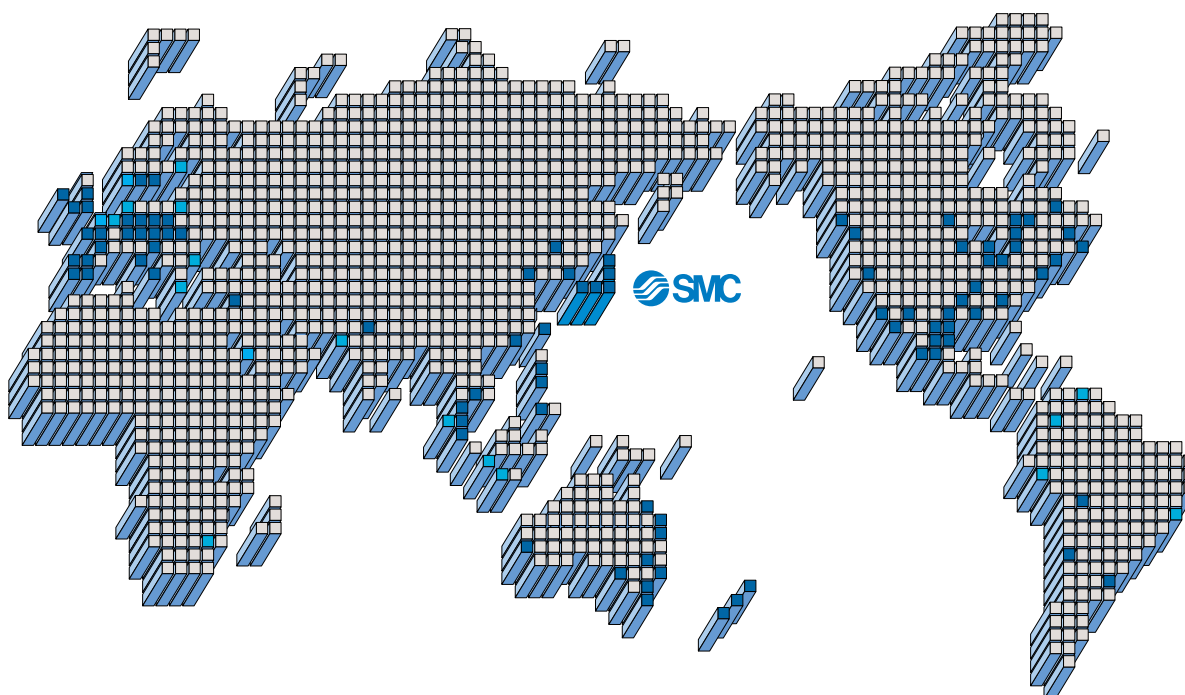
Caution

1. Perform periodic inspections to check the following problems and replace the tube, if necessary.

- Cracks, gouges, wearing, corrosion
- Air leakage
- Twists or crushing of tube
- Hardening, deterioration, softening of tube

2. Do not repair or patch the replaced tube or fittings for reuse.

SMC'S GLOBAL MANUFACTURING, DISTRIBUTION AND SERVICE NETWORK



EUROPE

AUSTRIA

SMC Pneumatik GmbH (Austria)

BELGIUM

SMC Pneumatics N.V./S.A.

BULGARIA

SMC Industrial Automation Bulgaria Eood

CROATIA

SMC Industrijska Automatika d.o.o.

CZECH REPUBLIC

SMC Industrial Automation CZ s.r.o.

DENMARK

SMC Pneumatik A/S

ESTONIA

SMC Pneumatics Estonia OÜ

FINLAND

SMC Pneumatics Finland Oy

FRANCE

SMC Pneumatique SA

GERMANY

SMC Pneumatik GmbH

GREECE

SMC Hellas E.P.E.

HUNGARY

SMC Hungary Ipari Automatizálási Kft.

IRELAND

SMC Pneumatics (Ireland) Ltd.

ITALY

SMC Italia S.p.A.

LATVIA

SMC Pneumatics Latvia SIA

LITHUANIA

UAB "SMC Pneumatics"

NETHERLANDS

SMC Pneumatics B.V.

NORWAY

SMC Pneumatics Norway AS

POLAND

SMC Industrial Automation Polska Sp.z.o.o.

ROMANIA

SMC Romania S.r.l.

RUSSIA

SMC Pneumatik LLC

SLOVAKIA

SMC Priemyselná Automatizácia Spol s.r.o.

SLOVENIA

SMC Industrijska Avtomatika d.o.o.

SPAIN/PORTUGAL

SMC España S.A.

SWEDEN

SMC Pneumatics Sweden AB

SWITZERLAND

SMC Pneumatik AG

U.K.

SMC Pneumatics (U.K.) Ltd.

ASIA

CHINA

SMC (China) Co., Ltd.

HONG KONG

SMC Pneumatics (Hong Kong) Ltd.

INDIA

SMC Pneumatics (India) Pvt. Ltd.

MALAYSIA

SMC Pneumatics (S.E.A.) Sdn. Bhd.

PHILIPPINES

Shoketsu SMC Corporation

SINGAPORE

SMC Pneumatics (S.E.A.) Pte. Ltd.

SOUTH KOREA

SMC Pneumatics Korea Co., Ltd.

TAIWAN

SMC Pneumatics (Taiwan) Co., Ltd.

THAILAND

SMC (Thailand) Ltd.

NORTH AMERICA

CANADA

SMC Pneumatics (Canada) Ltd.

MEXICO

SMC Corporation (Mexico), S.A. de C.V.

U.S.A.

SMC Corporation of America

SOUTH AMERICA

ARGENTINA

SMC Argentina S.A.

BOLIVIA

SMC Pneumatics Bolivia S.r.l.

BRAZIL

SMC Pneumáticos do Brasil Ltda

CHILE

SMC Pneumatics (Chile) S.A.

VENEZUELA

SMC Neumatica Venezuela S.A.

OCEANIA

AUSTRALIA

SMC Pneumatics (Australia) Pty. Ltd.

NEW ZEALAND

SMC Pneumatics (N.Z.) Ltd.



Safety Instructions

Be sure to read "Handling Precautions for SMC Products" (M-E03-3) before using.

SMC Corporation

Akihabara UDX 15F,
4-14-1, Sotokanda, Chiyoda-ku, Tokyo 101-0021, JAPAN
Phone: 03-5207-8249 Fax: 03-5298-5362
URL <http://www.smcworld.com>
© 2008 SMC Corporation All Rights Reserved

Specifications are subject to change without prior notice
and any obligation on the part of the manufacturer.

D-DN

1st printing MW printing MW 16400DN Printed in Japan.

This catalog is printed on recycled paper with concern for the global environment.