

# ④ YT-35CV4

Welding Torch for CO<sub>2</sub>/MAG Welding

## Easier Operation and Stronger Structure!



- Welding torch for welding mild steel and stainless steel.
- CC fitting connection type.

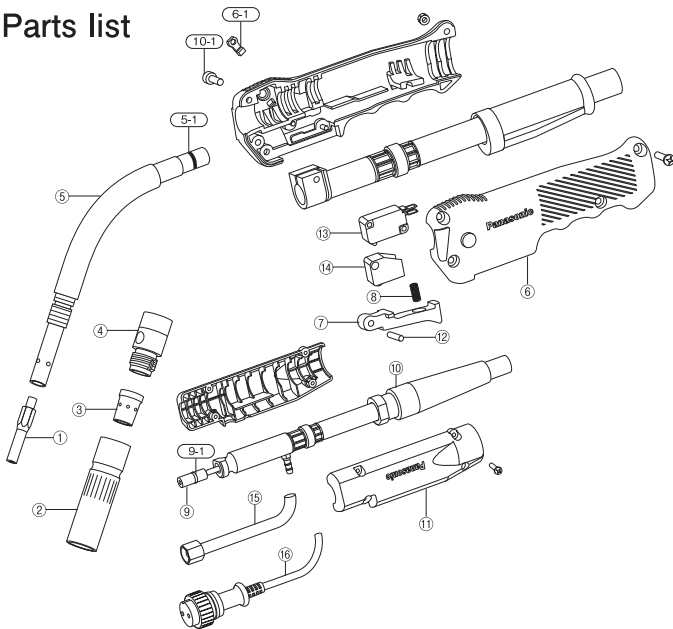
### Specifications

| Model    | Rated Current (A) | Cooling Method | Rated Duty Cycle (%)             | Applicable Wire Diameter (mm) |     |     |     | Cable Length (m) |
|----------|-------------------|----------------|----------------------------------|-------------------------------|-----|-----|-----|------------------|
|          |                   |                |                                  | 0.9                           | 1.0 | 1.2 | 1.4 |                  |
| YT-35CV4 | 350               | Air-cooled     | 45 (CO <sub>2</sub> ) / 35 (MAG) | ○                             | ○   | ◎   | ○   | 3                |

Note:

- Torch is equipped with parts for the wire of "◎" diameter. Optional parts are required to use the wires of "○" diameters.
- 4.5 m cable length type also available.
- Rated duty cycle is based on IEC 60974-7.

### Parts list



| No.  | Description               | YT-35CV4        |
|------|---------------------------|-----------------|
| 1    | Contact tip               | TET01296        |
| 2    | Nozzle                    | TGN00143        |
| 3    | Orifice                   | TGR01001        |
| 4    | Insulator                 | TFZ35101        |
| 5    | Torch body                | TCX00877        |
| 5-1  | O-ring                    | P8V             |
| 6    | Handle C                  | TKC00029        |
| 6-1  | Packing                   | TZV00002        |
| 7    | Switch lever C            | THL00002        |
| 8    | Switch spring             | TBN00003        |
| 9    | Liner                     | TDT00398        |
| 9-1  | O-ring                    | P7              |
| 10   | Power cable               | TDX00381        |
| 10-1 | Clamping bolt             | XVE5A15         |
| 11   | Protection tube           | TFP00018        |
| 12   | Pin                       | XPJ4B18FJ       |
| 13   | Micro switch              | YTA16(AM59356A) |
| 14   | Switch cover              | TSK50102        |
| 15   | Gas hose assembly         | TWG00046        |
| 16   | Control cable assembly    | TWU18102        |
| —    | Liner (4.5 m torch)       | TDT00399        |
| —    | Power cable (4.5 m torch) | TDX00382        |