



Matveyor[®]
FliteTop[®]
Matveyor[®]

**Modular Transfer Plates
with Rollers**

Combs

Turning Discs



DIVERSIA TEC
Tecnología industrial

C/ Centauro, 13
Área Empresarial Las Cubiertas
28971-Griñón (Madrid)

T. 0034 91 126 6627
info@diversiatec.com
www.diversiatec.com



Matveyor®

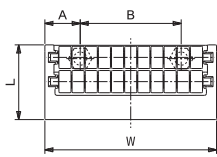


MODULAR TRANSFER PLATES WITH ROLLERS

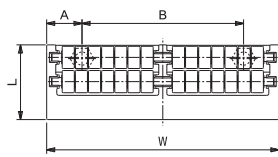
Modular transfer plates with rollers create a smooth transfer between two conveyors. They are available in 85 mm or 115 mm width and they can be used individually or back to back.

- Plate and Roller Materials

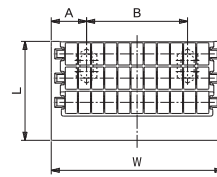
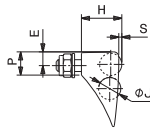
UP



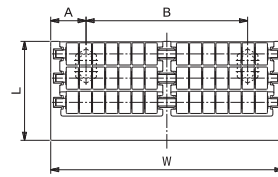
Ref: LTP-2R-K85



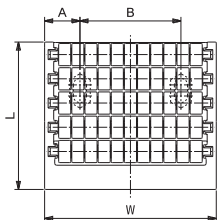
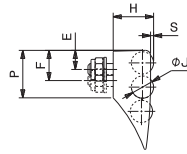
Ref: LTP-2R-K115



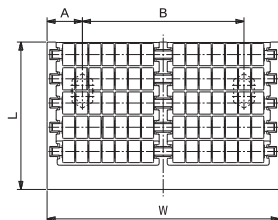
Ref: LTP-3R-K85



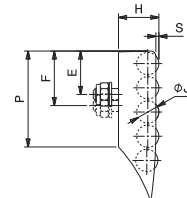
Ref: LTP-3R-K115



Ref: LTP-5R-K85



Ref: LTP-5R-K115

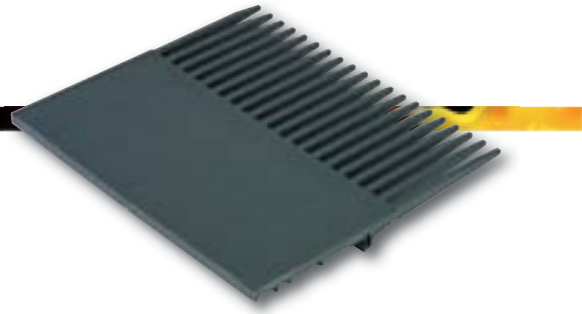


LTP-2R - LTP-3R - LTP-5R

REGINA PART NUMBER	MODULAR TRANSFER PLATES DIMENSIONS																			
	L		W		P		E		F		H		A		B		S		J	
	mm	inches	mm	inches	mm	inches	mm	inches	mm	inches	mm	inches	mm	inches	mm	inches	mm	inches	mm	inches
LTP-2R-K85	37	1.46	85	3.35	11,5	0.45	6,8	0.27	-	-	20	0.79	17,5	0.69	50	1.97	1,5	0.06	11	0.43
LTP-2R-K115	37	1.46	115	4.53	11,5	0.45	6,8	0.27	-	-	20	0.79	17,5	0.69	80	3.15	1,5	0.06	11	0.43
LTP-3R-K85	49	1.93	85	3.35	23,5	0.93	9,5	0.37	15	0.59	20	0.79	17,5	0.69	50	1.97	1,5	0.06	11	0.43
LTP-3R-K115	49	1.93	115	4.53	23,5	0.93	9,5	0.37	15	0.59	20	0.79	17,5	0.69	80	3.15	1,5	0.06	11	0.43
LTP-5R-K85	73	2.87	85	3.35	47,5	1.87	21,5	0.85	27	1.06	20	0.79	17,5	0.69	50	1.97	1,5	0.06	11	0.43
LTP-5R-K115	73	2.87	115	4.53	47,5	1.87	21,5	0.85	27	1.06	20	0.79	17,5	0.69	80	3.15	1,5	0.06	11	0.43



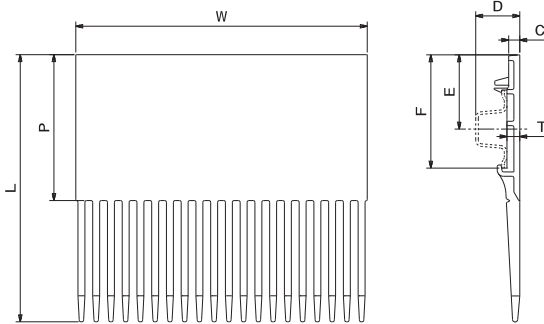
Matveyor®



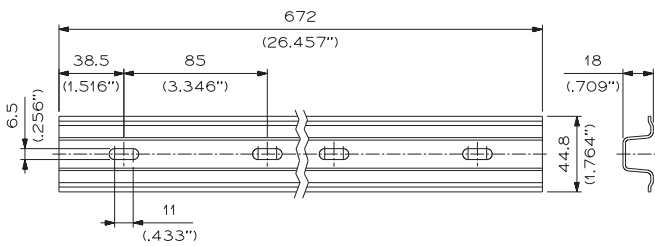
COMBS FOR RR1500 SERIES

Click-Combs can be easily installed on the stainless steel profile ref. PRT-RR1500-0672 without using any fastening screw.

- Comb Materials  ACETAL RESIN



Ref: TC1500-01



Ref: PRT-RR1500-0672



TC1500



REGINA PART NUMBER	COMB DIMENSIONS															
	L		W		P		E		T		F		D		C	
	mm	inches	mm	inches	mm	inches	mm	inches	mm	inches	mm	inches	mm	inches	mm	inches
TC1500-01	154	6.06	168	6.61	84,1	3.31	42,8	1.69	7,4	0.29	65	2.56	25,4	1.00	6,4	0.25



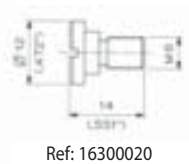
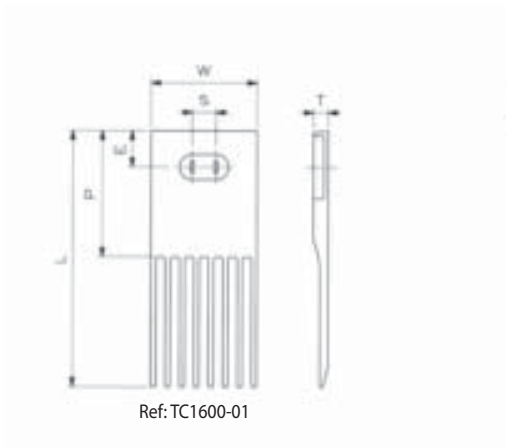
Matveyor®

COMBS FOR RR1600 SERIES

Combs are supplied complete with slot covers but without stainless steel fastening screws. One fastening screw is required for each comb. It can be ordered using ref. 16300020.



- Comb Materials  ACETAL RESIN



TC1600



Chain
see page 130

REGINA PART NUMBER	COMB DIMENSIONS											
	L		W		P		E		T		S	
	mm	inches	mm	inches	mm	inches	mm	inches	mm	inches	mm	inches
TC1600-01	152,4	6	62,5	2.46	75	2.95	21,6	0.85	8,7	0.34	14	0.55
TC1600-02	152,4	6	56	2.20	75	2.95	21,6	0.85	8,7	0.34	14	0.55
TC1600-03	152,4	6	49,5	1.95	75	2.95	21,6	0.85	8,7	0.34	14	0.55
TC1600-04	152,4	6	41	1.61	75	2.95	21,6	0.85	8,7	0.34	14	0.55



Matveyor®

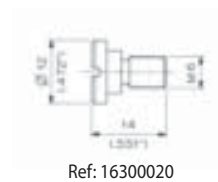
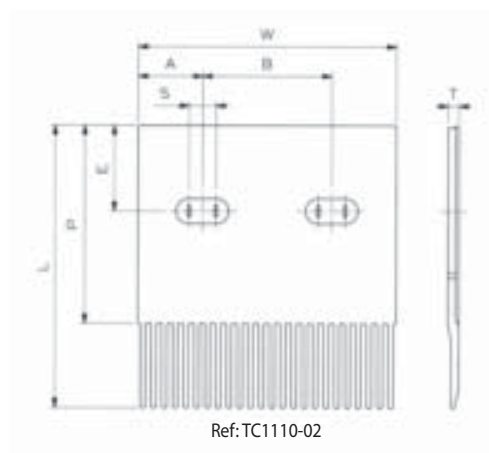
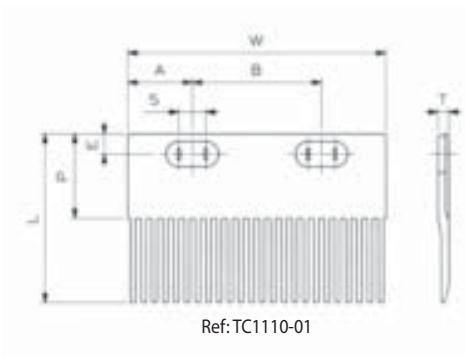
COMBS FOR 1110 SERIES

Combs are supplied complete with slot covers but without stainless steel fastening screws. Two fastening screws are required for each comb. They can be ordered using ref. 16300020.

Special note: the comb fastening screws of 1110 belts are not interchangeable with fastening screws of 3120 belts.



- Comb Materials ACETAL RESIN



TC1110



REGINA PART NUMBER	COMB DIMENSIONS															
	L		W		P		E		T		A		B		S	
	mm	inches	mm	inches	mm	inches	mm	inches	mm	inches	mm	inches	mm	inches	mm	inches
TC1110-01	100	3.94	152,4	6	50	1.97	12	0.47	6,4	0.25	38,1	1.5	76,2	3	16	0.63
TC1110-02	167,4	6.59	152,4	6	117,4	4.62	50,8	2	6,4	0.25	38,1	1.5	76,2	3	16	0.63



Matveyor®

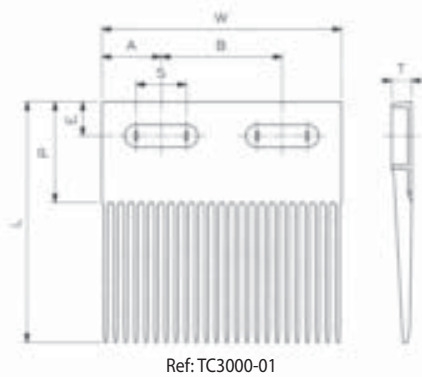
COMBS FOR 3120 SERIES

Combs are supplied complete with slot covers but without stainless steel fastening screws. Two fastening screws are required for each comb. They can be ordered using ref. 16300005.

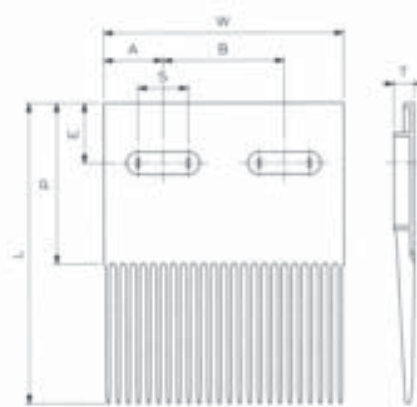
Special note: the comb fastening screws of 3120 belts are not interchangeable with fastening screws of 1110 belts.



- Comb Materials  ACETAL RESIN



Ref: TC3000-01



Ref: TC3000-02



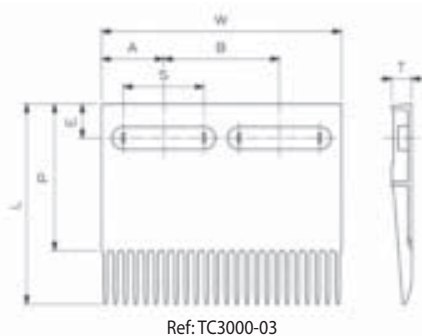
Ref: 16300005

TC3000

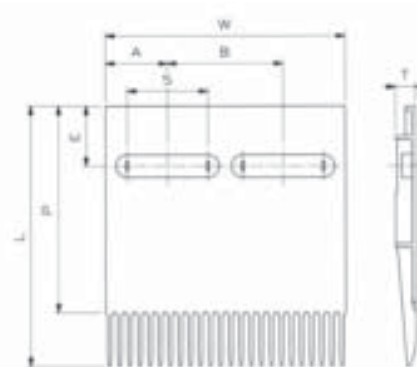
REGINA PART NUMBER	TYPE	COMB DIMENSIONS															
		L		W		P		E		T		A	B	S			
		mm	inches	mm	inches	mm	inches	mm	inches	mm	inches	mm	inches	mm	inches		
TC3000-01	LONG TOOTH COMBS	152,4	6.0	150,9	5.94	63,5	2.5	21,6	0.85	12,7	0.5	37,4	1.47	76,2	3	31,8	1.25
TC3000-02	LONG TOOTH COMBS	190,5	7.5	150,9	5.94	101,6	4.0	38,1	1.50	12,7	0.5	37,4	1.47	76,2	3	31,8	1.25



Belt see page 177



Ref: TC3000-03



Ref: TC3000-04



Ref: 16300005

TC3000

REGINA PART NUMBER	TYPE	COMB DIMENSIONS															
		L		W		P		E		T		A	B	S			
		mm	inches	mm	inches	mm	inches	mm	inches	mm	inches	mm	inches	mm	inches		
TC3000-03	SHORT TOOTH COMBS	127	5	150,9	5.94	92,7	3.65	21,6	0.85	12,7	0.5	39,2	1.54	72,6	2.86	50,8	2
TC3000-04	SHORT TOOTH COMBS	165,1	6.5	150,9	5.94	130,8	5.15	38,1	1.5	12,7	0.5	39,2	1.54	72,6	2.86	50,8	2



Belt see page 177



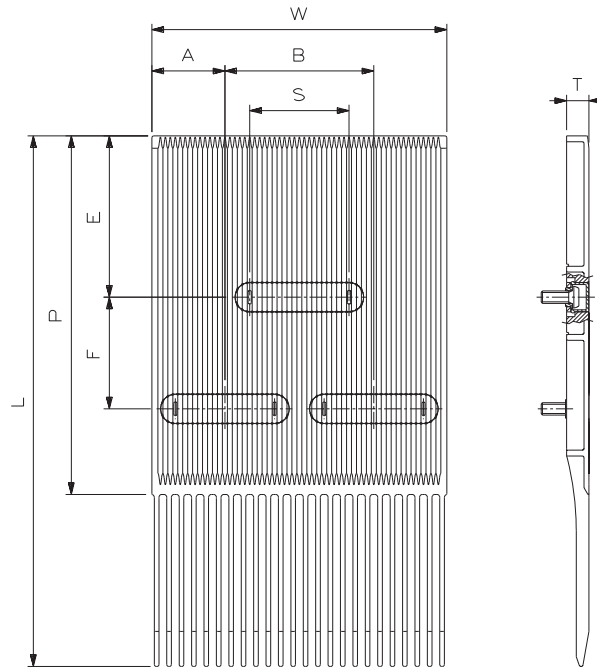
Matveyor®

COMBS FOR 3120 SERIES

Combs are supplied complete with slot covers, bushings and fastening screws type hex socket button head 1/4" x 5/8" stainless steel UNI-ISO 7380.



- Comb Materials ACETAL RESIN



TC3000



REGINA PART NUMBER	TYPE	COMB DIMENSIONS																	
		L		W		P		E		F		T		A		B		S	
		mm	inches	mm	inches	mm	inches	mm	inches	mm	inches	mm	inches	mm	inches	mm	inches	mm	inches
TC3000-05	LONG TOOTH COMBS	271,5	10.69	150,9	5.94	183,5	7.22	82,6	3.25	57,2	2.25	11,4	0.45	37,4	1.47	76,2	3.00	50,8	2



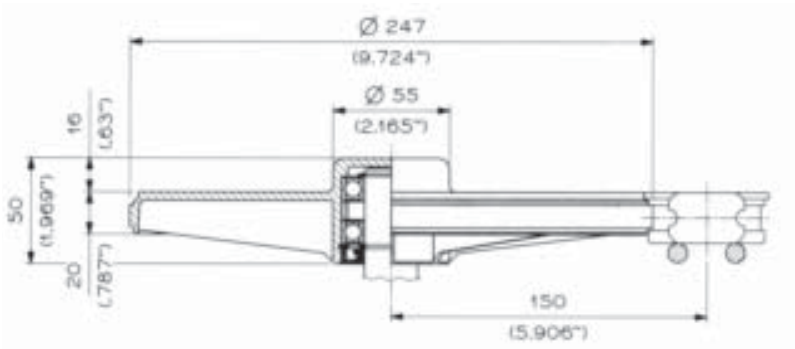
FliteTop®

TURNING DISC FOR 1700 SERIES

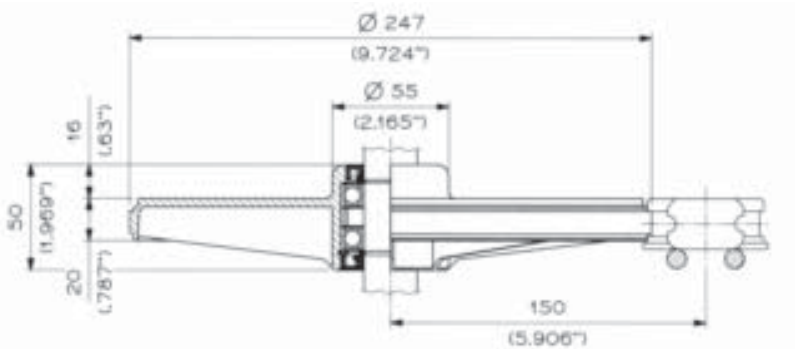
Anti-friction turn discs for 1700 series (see page 107) together with the special thermoplastic chain material allow longer chain runs and multiple turns to be incorporated in such applications as: in line accumulation, routing to automatic or manual inspection points, elevation or lowering to automatic or manual inspection points and product distribution.



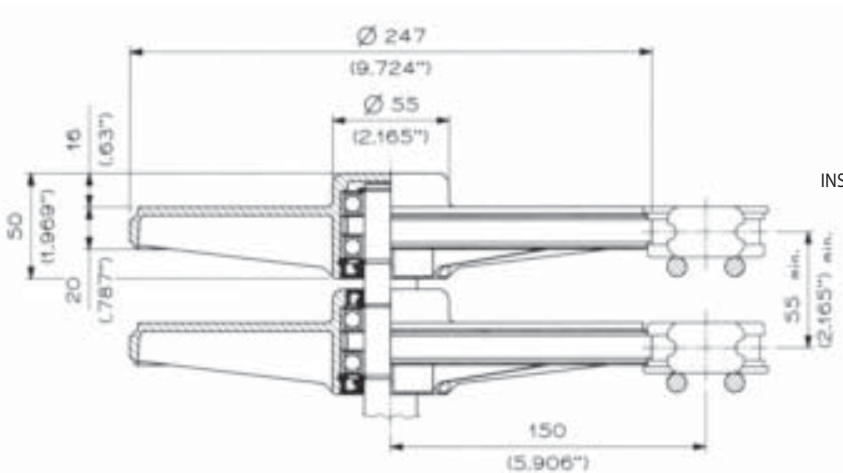
- Disc Materials REINFORCED POLYAMIDE



Ref: CMT 09 1700 A 00



Ref: CMT 09 1700 C 00



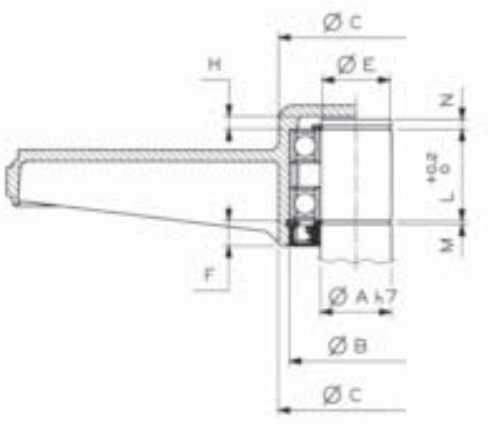
INSTALLATION



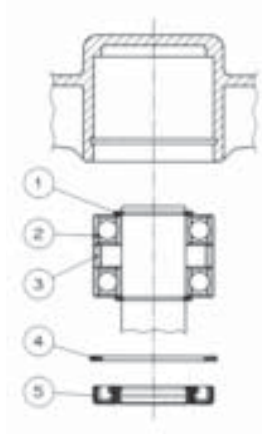
FliteTop®

SHAFT AND TURNING DISC DIMENSIONS:

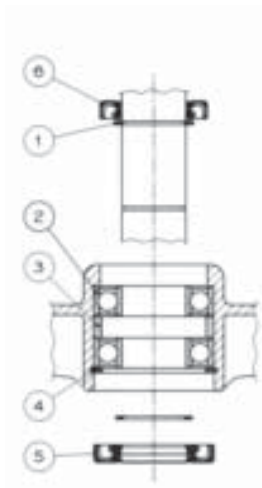
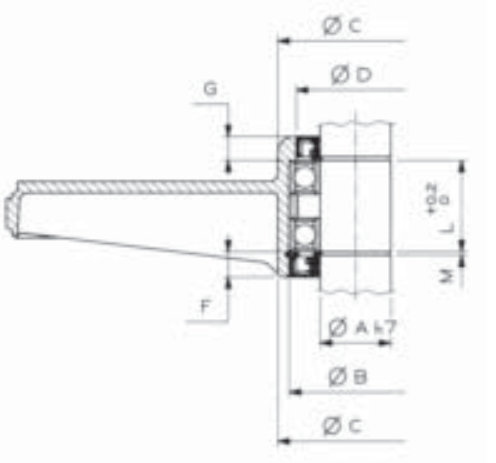
Ref: CMT 09 1700 A 00



COMPONENTS:



Ref: CMT 09 1700 C 00



Dimension	mm	inches
A	25	.984
B	47	1.85
C	55	2.165
D	42	1.645
E	23,9	.941
F	9	.354
G	8	.335
H	4,5	.177
L	32,2	1.268
M	1,3	.051
N	3,5	.138

Turning discs are supplied with the following separated components:

- 1 - External retaining ring, Ø 25 UNI 7435-25;
- 2 - Single race radial bearing with two sliding seals, 6005-2RS1 (25x47x12);
- 3 - Bearing spacer;
- 4 - Internal retaining ring, Ø 47 UNI 7437-47;
- 5 - Seal ring with dust cover, DPSM 25477 DIN 3760 (25x47x7);
- 6 - Seal ring with dust cover, DPSM 25477 DIN 3760 (25x47x7), only for open version (CMT 09 1700 C 00).

Please contact Application Engineers for a more detailed evaluation.