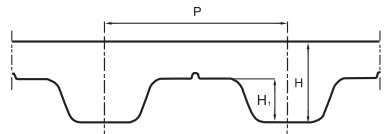
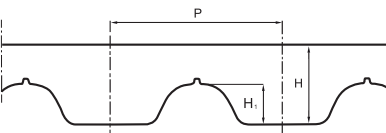


MEGALINEAR PU open-end timing belts

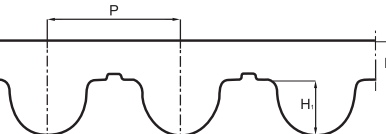
T5 - T10 - T20



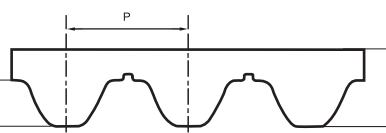
AT3 - AT5 - AT10 - AT20



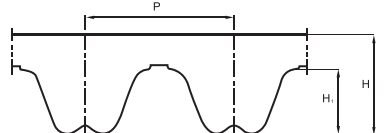
MTD 3M - MTD 5M - MTD 8M - MTD 14M



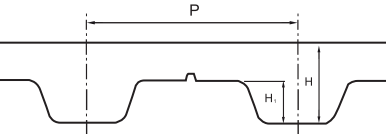
STD 5M - STD 8M



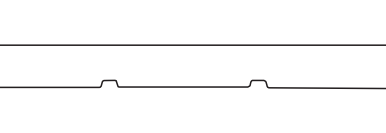
RPP5 - RPP8 - RPP14



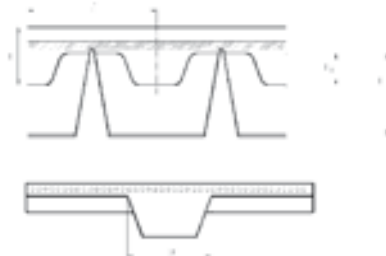
XL - L - H - XH



P1 - P2 - P4



TG5 - TG10 - TG20 - ATG5 - ATG10 - ATG20 - HG



MTD 3M

Std. width (mm)

10
20
25
50

MTD 5M

Std. width (mm)

10
15
25
50

MTD 8M

Std. width (mm)

10
15
20
30
50
85
100

MTD 14M

Std. width (mm)

25
40
55
85
100
115

P 3

H 2,2

H₁ 1,13

P 5

H 3,6

H₁ 2,1

P 8

H 5,6

H₁ 3,4

P 14

H 10

H₁ 6,1

RPP5

Std. width (mm)

10
15
25
30
50
75

RPP8

Std. width (mm)

10
15
20
30
50
85
100

RPP14

Std. width (mm)

40
55
85
115
150

P 5

H 3,8

H₁ 2

P 8

H 5,4

H₁ 3,2

P 14

H 10

H₁ 6

TG5 K6

Std. width (mm)

25
32
50

TG10 K6

Std. width (mm)

50

TG10 K13

Std. width (mm)

25
32
50
75
100

TG20 K13

Std. width (mm)

50
75
100

P 5

H 2,2

H₁ 1,2

B 6

h 4

P 10

H 4,5

H₁ 2,5

B 6

h 3,3

P 10

H 4,5

H₁ 2,5

B 13

h 6,5

P 20

H 8

H₁ 5

B 13

h 5,5

ATG5 K6

Std. width (mm)

25
32
50

ATG10 K13

Std. width (mm)

25
32
50
75
100
150

ATG20 K13

Std. width (mm)

75
150

HG K13

Std. width (inches)

1,50
2,00
3,00
4,00

P 5

H 2,7

H₁ 1,2

B 6

h 4

P 10

H 4,5

H₁ 2,5

B 13

h 7

P 20

H 8

H₁ 5

B 13

h 6,4

P 12,7

H 4,3

H₁ 2,29

B 13

h 6,29

MEGALINEAR PU open-end timing belts

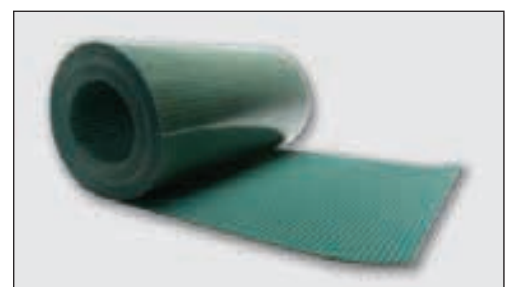
XL		L		H		H*		XH	
Std. width (inches)		Std. width (inches)		Std. width (inches)		Std. width (inches)		Std. width (inches)	
	0.25		0.37		0.50		8.00		1.00
	0.37		0.50		0.75		20.00		1.50
	0.50		0.75		1.00				2.00
	0.75		1.00		1.50				3.00
	1.00		1.50		2.00				4.00
	1.50		2.00		3.00				6.00
	2.00		4.00		4.00				
					6.00				
P	5,08	P	9,525	P	12,7	P	12,7	P	22,225
H	2,3	H	3,6	H	4,3	H	4,3	H	11,2
H1	1,27	H1	1,90	H1	2,29	H1	2,29	H1	6,35

T5		T10		T10*		T20	
Std. width (mm)		Std. width (mm)		Std. width (mm)		Std. width (mm)	
	6		12		200		25
	10		16		250		32
	16		25		300		50
	25		32		400		75
	32		50		450		100
	50		75		500		150
	75		100				
	100		150				
P	5	P	10	P	10	P	20
H	2,2	H	4,5	H	4,5	H	8
H1	1,2	H1	2,5	H1	2,5	H1	5

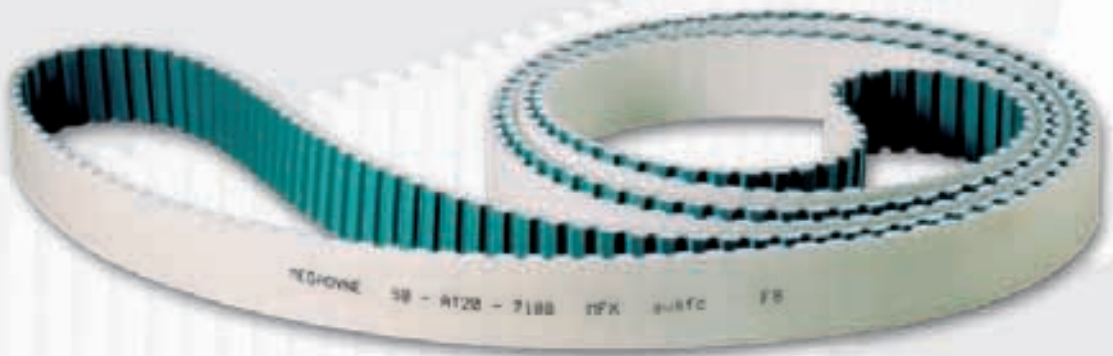
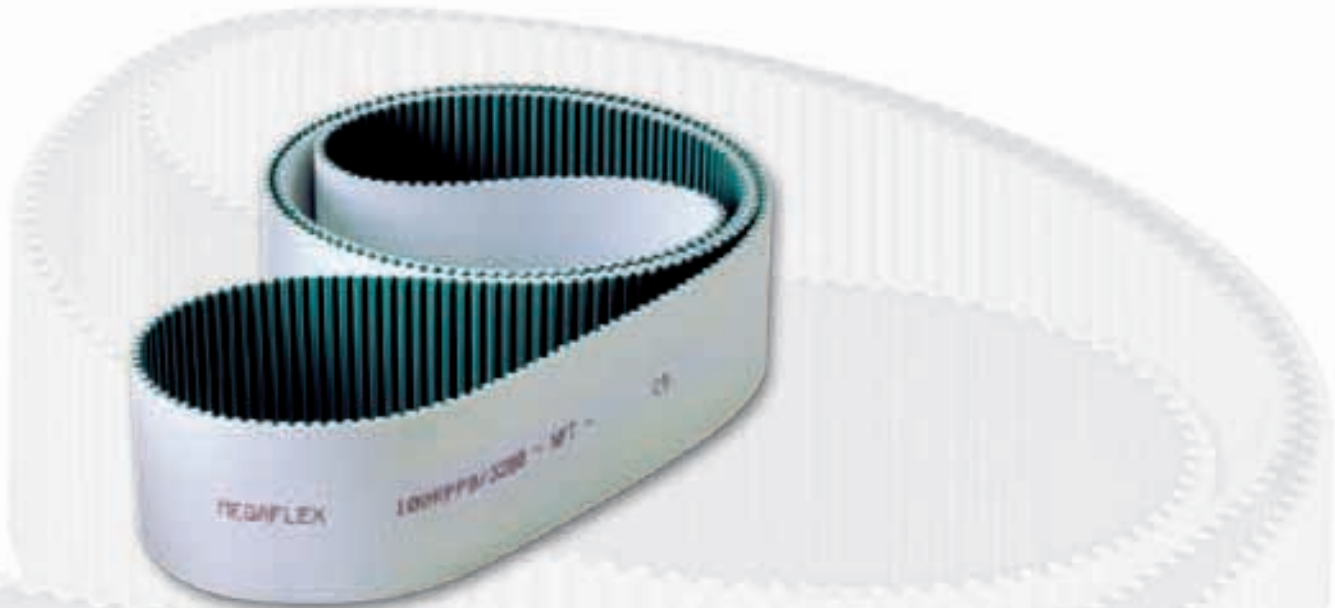
AT3		AT5		AT10		AT20	
Std. width (mm)		Std. width (mm)		Std. width (mm)		Std. width (mm)	
	10		6		16		25
	20		10		25		32
	25		16		32		50
	50		25		50		75
			32		75		100
			50		100		150
			75		150		200
			100				
P	3	P	5	P	10	P	20
H	1,9	H	2,7	H	4,5	H	8
H1	1,1	H1	1,2	H1	2,5	H1	5

STD 5M		STD 8M	
Std. width (mm)		Std. width (mm)	
	10		10
	15		12
	25		15
	50		20
			30
			50
			85
P	5	P	8
H	3,4	H	5,1
H1	1,91	H1	3,05

P1		P2		P4	
Std. width (mm)		Std. width (mm)		Std. width (mm)	
	10		25		25
	20		50		50
			75		100
			100		
H	1	H	2	H	4



MEGAFLEX PU truly endless timing belts



MEGAFLEX PU truly endless timing belts



MEGAFLEX TIMING BELTS are manufactured in thermoplastic polyurethane, with continuous spiral steel cords.

This type of belt, developed by our Research & Development, offers good running characteristics and high traction loads.

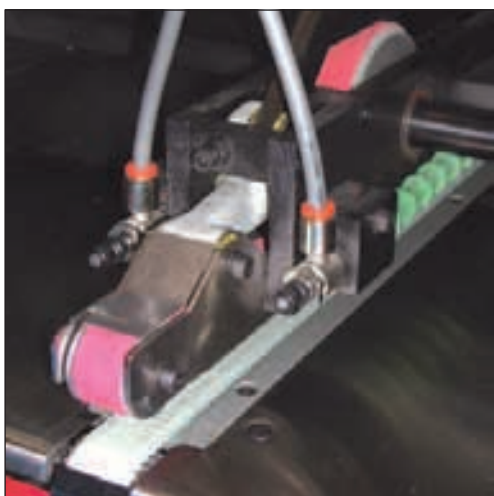
They are especially suited for power transmission and conveying with high loads and high speeds (up to 10.000 RPM).

The addition of a nylon coating on the teeth during production enhances the running properties for specific applications and reduces the noise frictional coefficient.

An extra thickness of special coating is also possible on the back of the belt offering extra protection against aggressive or heavy products.

Megaflex belts are truly endless, enabling them to deliver exceptional performance.

MEGADYNE MEGAFLEX TIMING BELTS ARE AVAILABLE FROM 1.500 UP TO 22.700 mm LENGTH.



MEGAFLEX Special constructions

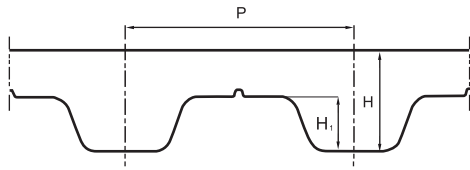
- High flex cords
- (NFT) nylon fabric on the teeth (available from 1.900 mm long)
- Custom milling, grinding and drilling to specification
- Additional continuous coatings on the back of the belt in:
 - PU 85° ShA
 - Tenax 50° ShA
 - Linatex 40° ShA
 - Yellow PUR 60° ShA
 - Grey PUR 60° ShA
 - Neoprene rubber 70° ShA

Other hardnesses available on request.

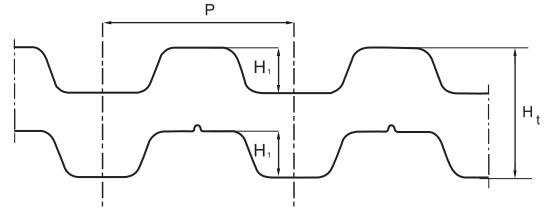


MEGAFLEX PU truly endless timing belts

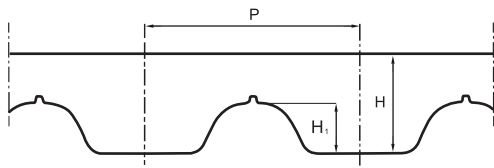
T5 - T10 - T20



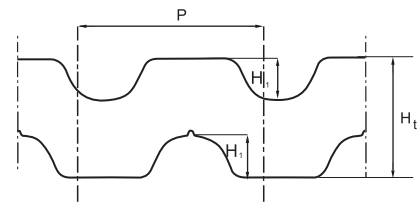
T5 DL - T10 DL - T20 DL



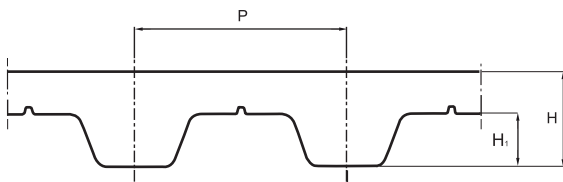
AT5 - AT10 - AT20



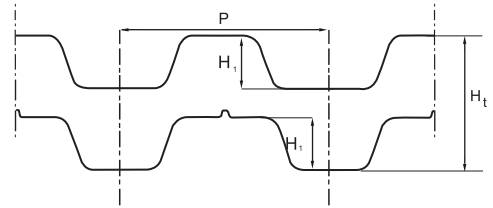
AT5 DL - AT10 DL - AT20 DL



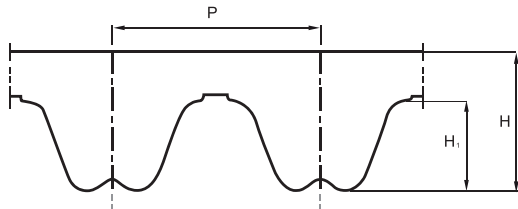
XL - L - H - XH



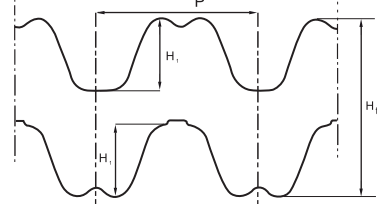
XL DL - L DL - H DL - XH DL



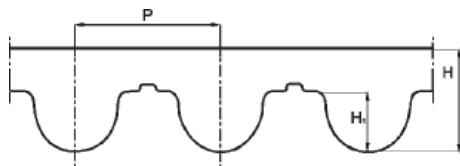
RPP5 - RPP8 - RPP14



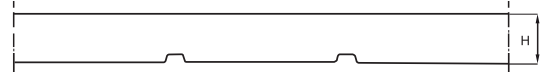
RPP5 DL - RPP8 DL - RPP14 DL



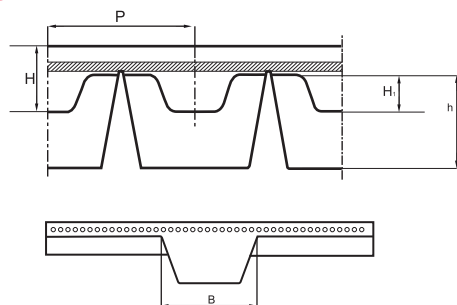
MTD 8M



P2



ATG10



P2	
Std. width (mm)	
25	
50	
75	
100	
150	

ATG10 K13	
Std. width (mm)	
10	
16	
25	
32	
50	
75	
100	
150	

MTD 8M	
Std. width (mm)	
10	
16	
25	
32	
50	
75	
100	
150	

P	2,0
---	-----

P	10
---	----

P	8
---	---

H	4,5
---	-----

H	5,6
---	-----

H1	2,5
----	-----

H1	3,4
----	-----

B	13
---	----

h	6,4
---	-----

MEGAFLEX PU truly endless timing belts

T5/T5DL		T10/T10DL		T20/T20DL	
Std. width (mm)		Std. width (mm)		Std. width (mm)	
	10		10		10
	16		16		16
	25		25		25
	32		32		32
	50		50		50
	75		75		75
	100		100		100
	150		150		150
P	5	P	10	P	20
H	2,2	H	4,5	H	8
H ₁	1,2	H ₁	2,5	H ₁	5
H _t	3,4	H _t	7	H _t	13



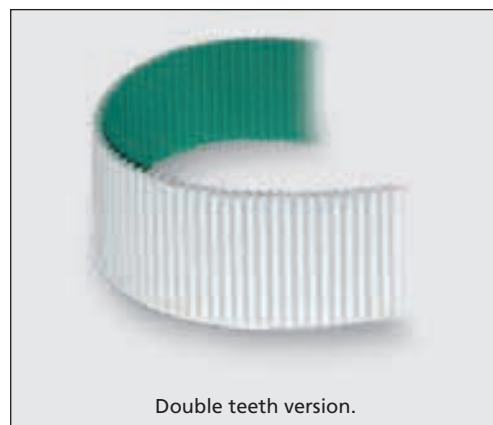
AVAFC - PU 85 shore A, extruded on back.

AT5/AT5DL		AT10/AT10DL		AT20/AT20DL	
Std. width (mm)		Std. width (mm)		Std. width (mm)	
	10		10		10
	16		16		16
	25		25		25
	32		32		32
	50		50		50
	75		75		75
	100		100		100
	150		150		150
P	5	P	10	P	20
H	2,7	H	4,5	H	8
H ₁	1,2	H ₁	2,5	H ₁	5
H _t	3,9	H _t	7	H _t	13



NFT - Nylon fabric on teeth low friction and noise.

RPP5/RPP5DL		RPP8/RPP8DL		RPP14/RPP14DL	
Std. width (mm)		Std. width (mm)		Std. width (mm)	
	10		10		10
	15		15		15
	20		20		20
	25		25		25
	50		50		50
	85		85		85
	100		100		100
	150		150		150
P	5	P	8	P	14
H	3,8	H	5,4	H	10
H ₁	2	H ₁	3,2	H ₁	6
H _t	5,2	H _t	7,8	H _t	14,5



Double teeth version.

XL/XLDL		L/LDL		H/HDL		XH/XHDL	
Std. width (mm)		Std. width (mm)		Std. width (mm)		Std. width (mm)	
	12,7		12,7		12,7		12,7
	19,1		19,1		19,1		19,1
	25,4		25,4		25,4		25,4
	38,1		38,1		38,1		38,1
	50,8		50,8		50,8		50,8
	76,2		76,2		76,2		76,2
	101,6		101,6		101,6		101,6
	152,4		152,4		152,4		152,4
P	5,08	P	9,525	P	12,7	P	22,225
H	2,3	H	3,6	H	4,3	H	11,2
H ₁	1,27	H ₁	1,9	H ₁	2,29	H ₁	6,35
H _t	3,05	H _t	4,58	H _t	5,95	H _t	15,49

MEGARIB PU endless Megarib belts



MEGARIB PU endless Megarib belts



MEGARIB belts are manufactured in polyurethane with polyester high tension cords, which combine the high flexibility of flat belts with the power transmission capability of v-belts.

These belts have the following features

- Dimensional stability
- High flexibility
- Small pulley diameters
- High speeds
- Excellent oil, water and ozone resistance

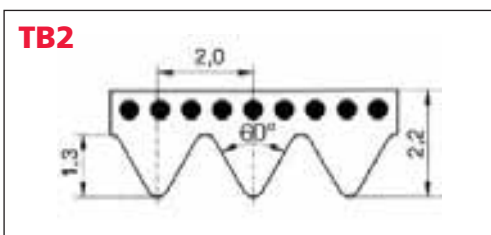
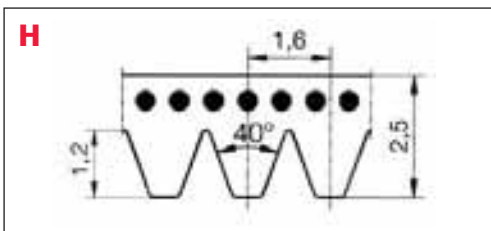
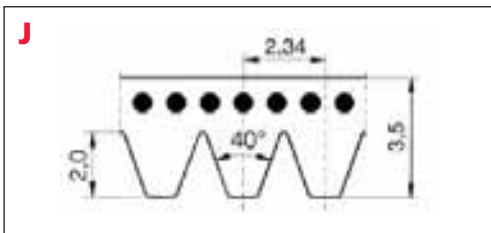


The main applications are

- Food processors
- Grass cutting equipment
- Electrical household appliances
- Washing machines
- Electrical tools
- Woodworking equipment
- Domestic power tools

On request, special elastic Megarib belts can be manufactured in polyurethane with a semi-elastic tension member. They can be fitted on fix centre drives, reducing noise and vibrations. The absence of a tensioning mechanism, offers additional cost savings.

Standard Megarib belts are available in a wide variety of rib pitches and length (see below).



J		H	TB2
Standard length		Standard length	Standard length
(mm)	(inches)	(mm)	(mm)
220	87	178	156
271	107	223	170
275	108	261	200
278	110	295	220
283	112	330	231
288	114	340	248
304	120	375	266
330	130	389	295
345	135	400	310
356	140	485	327
360	142	507	330
381	150	588	345
392	154	602	360
406	160	609	380
431	170	650	390
444	175	768	400
457	180	935	430
483	190	1000	480
508	200	1086	510
558	220	1120	526
610	240	1163	535
660	260	1203	598
681	268	1240	630
711	280	1775	660
762	300	1976	675
864	340		725
914	360		770
953	376		1186
1010	398		
1086	428		
1120	440		
1163	458		
1202	474		
1239	488		
1268	500		
1397	590		