



SV-M020CS

Straight Axis, Incremental, 200 W



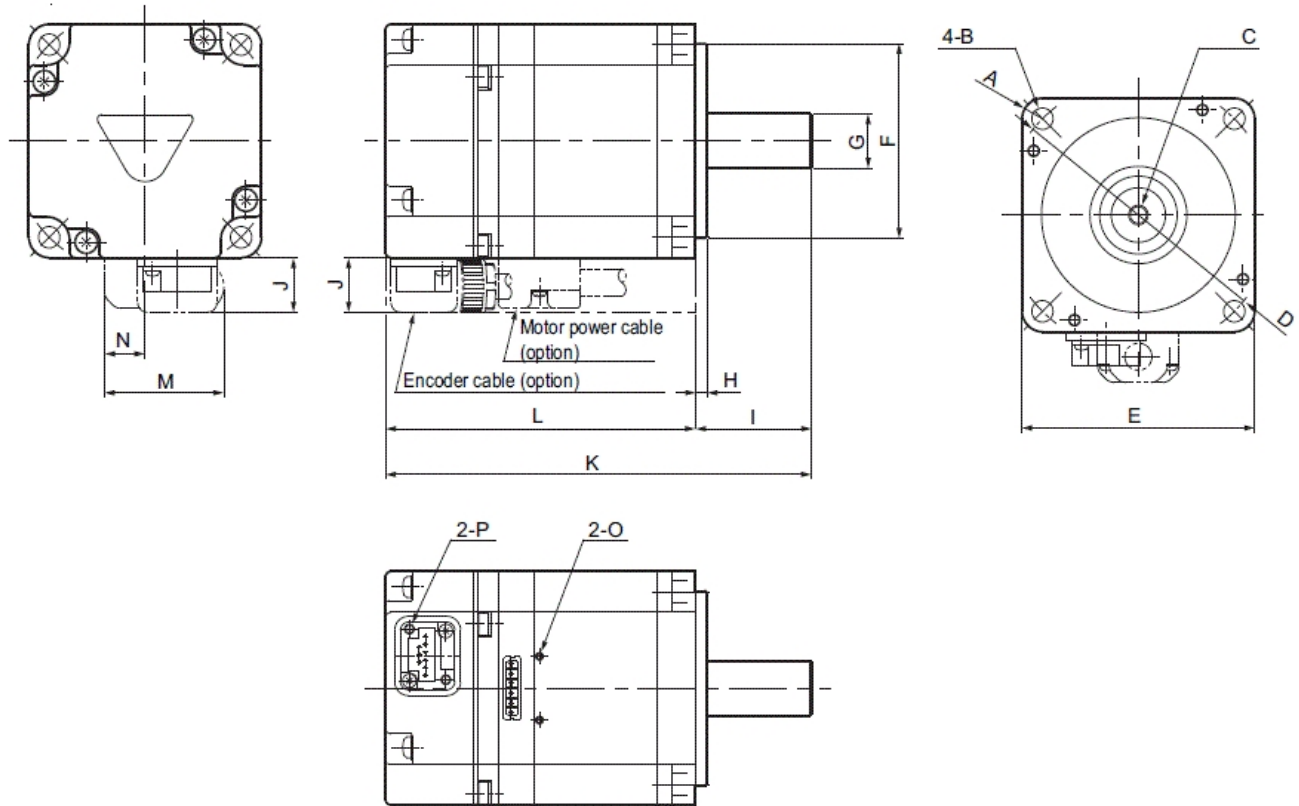
SPECIFICATIONS

Model	SV-M020CS		
General specifications	Type	Standard motor, Incremental Type (INC)	
	Applicable servo amplifiers	SV-020**	
	Rated output	200 W	
	Rated torque	0.637 N m	
	Instantaneous maximum torque	2.23 N m	
	Rated current	1.6 Arms	
	Instantaneous maximum current	5.8 Arms	
	Rated rotation speed	3000 min ⁻¹	
	Highest rotation speed	6000 min ⁻¹	
	Torque constant	0.435 N m/Arms	
	Rotor moment of inertia	0.259 × 10 ⁻⁴ kg·m ²	
	Rated power rate	15.7 kW/s	
	Rated angle acceleration	24600 rad/s ²	
	Excitation method	Permanent magnet	
	Allowable load moment of inertia ratio	15 times	
	Resolution	20bit	
	Operating environment	Operating ambient temperature	0 to +40°C (No freezing)
		Ambient storage temperature	-20 to +60°C (No freezing)
		Ambient operating/storage humidity	20 to 80%RH (no condensation)
		Vibration resistance	49 m/s ² with the servo motor flange used as reference surface (3 directions: up/down, right/left, and forward/backward)
		Shock resistance	490 m/s ² for two times with the servo motor flange used as reference surface
		Enclosure rating	Totally enclosed, self-cooling, IP65 (excluding connectors and shaft opening)
	Operating environment	Indoors (No corrosive gas, flammable gas, oil mist, or dust)	
	Operating environment	Altitude	1,000 m max. above sea level
	Approved standards	UL/CSA standards	
		UL1004 C22.2 No.100	
		CE marking	Low-voltage directive
EMI			EN55011 Class A, EN61800-3
EMS	EN61800-3		
North American EMI standards		FCC Part15 B, ICES-003. Class A	
Insulation class	Class B		
Insulation withstand voltage	1500 VAC for 1 minute		
Insulation resistance	10 MΩ min. with 500 VDC megohmmeter		
Weight	Approx 0.9kg		
Note	<p>Rates torque of 50 W to 750 W is the continuous permissible torque values in the following conditions:</p> <p>-Ambient temperature: 40°C</p> <p>-Attached aluminium heatsink:</p> <p>50 W to 100 W: 200 × 200 × 6 [mm]</p> <p>200 W to 750 W: 250 × 250 × 6 [mm]</p> <p>Rates torque of 1 kW to 5 kW is the continuous permissible torque values in the following conditions:</p> <p>-Ambient temperature: 40°C</p> <p>-Attached iron heatsink:</p> <p>1 kW to 2 kW: 400 × 400 × 20 [mm]</p> <p>3 kW, 5 kW: 550 × 550 × 30 [mm]</p>		

Dimensions

* Download CAD file or product manual for larger image/text and more detail.

SV-M020□□/M040□□/ M075□□



Model	SV-M020□□	SV-M040□□	SV-M075□□
(A)	R5.3	R5.3	R8.2
(B)	Ø5.5	Ø5.5	Ø7
(C)	M5, depth 8	M5, depth 8	M6, depth 10
(D)	Ø70	Ø70	Ø90
(E)	*60	*60	*80
(F)	Ø50h7	Ø50h7	Ø70h7
(G)	Ø14h6	Ø14h6	Ø19h6
(H)	3	3	3
(I)	30	30	40
(J)	(14)	(14)	(15)
(K)	110	128.5	155
(L)	80	98.5	115
(M)	30.8	30.8	39.3
(N)	10.5	10.5	13.5
(O)	M2	M2	M2.5
(P)	M2	M2	M2