

# ST-REL2-KG 24/1 - Relay connectors



2823625

<https://www.phoenixcontact.com/pc/products/2823625>

Please be informed that the data shown in this PDF document is generated from our Online Catalog. Please find the complete data in the user documentation. Our General Terms of Use for Downloads are valid.



Relay connector, fitted with miniature switching relay, contacts (AgNi): Medium to large loads, 1 N/O contact, 24 V AC/DC input voltage, with light indicator, can be plugged into basic terminal blocks

## Commercial Data

Item number	2823625
Packing unit	10 pc
Minimum order quantity	1 pc
Product Key	CK6122
Catalog Page	Page 87 (IF-2005)
GTIN	4017918077464
Weight per Piece (including packing)	34.96 g
Weight per Piece (excluding packing)	31.6 g
Customs tariff number	85364190
Country of origin	DE

# ST-REL2-KG 24/1 - Relay connectors



2823625

<https://www.phoenixcontact.com/pc/products/2823625>

## Technical Data

### Product properties

Product type	Relay Module
Operating mode	100% operating factor
Mechanical service life	approx. $2 \times 10^7$ cycles

### Electrical properties

Maximum power dissipation for nominal condition	0.5 W
Test voltage (Winding/contact)	2.5 kV AC (50 Hz, 1 min., winding/contact)

### Input data

#### Coil side

Nominal input voltage $U_N$	24 V AC/DC
Input voltage range	19.2 V AC/DC ... 26.4 V AC/DC (20 °C)
Typical input current at $U_N$	21 mA
Typical response time	7 ms (with DC)
Typical release time	11 ms (with DC)
Protective circuit	Bridge rectifier, varistor
Operating voltage display	yes

### Output data

#### Switching

Contact type	Single contact, 1 N/O contact
Type of switch contact	Single contact
Drive and function	monostable
Contact material	AgNi
Maximum switching voltage	250 V AC/DC
Limiting continuous current	6 A
Maximum inrush current	8 A
Interrupting rating (ohmic load) max.	95 W (at 24 V DC) 50 W (at 48 V DC) 45 W (at 60 V DC) 45 W (at 110 V DC) 75 W (at 220 V DC) 1500 VA (for 250 V AC)

### Dimensions

Width	14.6 mm
Height	33 mm
Depth	66.5 mm

### Environmental and real-life conditions

# ST-REL2-KG 24/1 - Relay connectors



2823625

<https://www.phoenixcontact.com/pc/products/2823625>

## Ambient conditions

Ambient temperature (operation)	-20 °C ... 50 °C
Ambient temperature (storage/transport)	-20 °C ... 70 °C

## Standards and regulations

Standards/regulations	DIN VDE 0110b, Gr. C for 250 V DC
	IEC 60255/DIN VDE 0435 (in relevant parts)
	DIN EN 50178/VDE 0160 (in relevant parts)
	EN 60730/DIN VDE 0631
	DIN VDE 0160 (in relevant parts)

## Mounting

Mounting type	Plug-in mounting
---------------	------------------

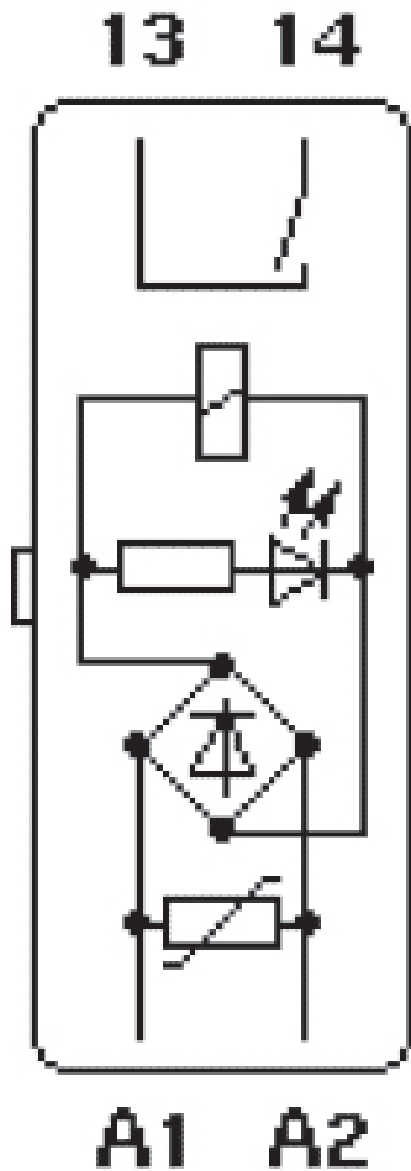
# ST-REL2-KG 24/1 - Relay connectors

2823625

<https://www.phoenixcontact.com/pc/products/2823625>

## Drawings

Circuit diagram



# ST-REL2-KG 24/1 - Relay connectors



2823625

<https://www.phoenixcontact.com/pc/products/2823625>

## Approvals



**EAC**

Approval ID: TR\_TS\_D\_00573\_c



**EAC**

Approval ID: RU\*C-DE.\*08.B.00010

# ST-REL2-KG 24/1 - Relay connectors



2823625

<https://www.phoenixcontact.com/pc/products/2823625>

## Classifications

### ECLASS

ECLASS-10.0.1	27371601
ECLASS-11.0	27371601
ECLASS-12.0	27371601
ECLASS-13.0	27371601

### ETIM

ETIM 8.0	EC001437
----------	----------

### UNSPSC

UNSPSC 21.0	39122300
-------------	----------

# ST-REL2-KG 24/1 - Relay connectors



2823625

<https://www.phoenixcontact.com/pc/products/2823625>

## Environmental Product Compliance

REACH SVHC	Lead 7439-92-1
China RoHS	Environmentally Friendly Use Period = 50 years
	For information on hazardous substances, refer to the manufacturer's declaration available under "Downloads"

# ST-REL2-KG 24/1 - Relay connectors

2823625

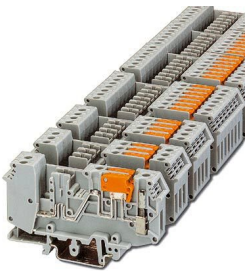
<https://www.phoenixcontact.com/pc/products/2823625>

## Mandatory Accessories

### URELG 2-PMTK - Basic terminal block

2820835

<https://www.phoenixcontact.com/pc/products/2820835>



Basic termination blocks with test connection on both sides and knife disconnection for NS 32 and NS 35/7.5 DIN rail, with end cover, for ST-REL..., ST-OV... and ST-OE... plugs, 2-pos.

---

### UDK-RELG 2 - Basic terminal block

2777030

<https://www.phoenixcontact.com/pc/products/2777030>



Basic termination blocks with test connection on both sides and double connections with the same potential for NS 32 and NS 35/7.5 DIN rail, with end cover, for ST-REL..., ST-OV... and ST-OE... plugs, 2-pos.



# ST-REL2-KG 24/1 - Relay connectors

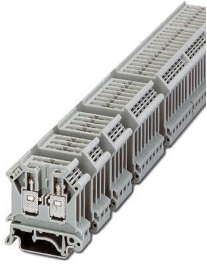
2823625

<https://www.phoenixcontact.com/pc/products/2823625>

## URELG 2 - Basic terminal block

2820262

<https://www.phoenixcontact.com/pc/products/2820262>



Basic termination blocks with screw connection for NS 32 and NS 35/7.5 DIN rail, with end cover, for ST-REL..., ST-OV... and ST-OE... plugs, 2-pos.

---

## ZFK-RELG 2 - Basic terminal block

2829904

<https://www.phoenixcontact.com/pc/products/2829904>



Basic termination blocks with spring-cage connection for NS 35/7.5 DIN rail, with end cover, for ST-REL..., ST-OV... and ST-OE... plugs, 2-pos.

---

## Accessories

# ST-REL2-KG 24/1 - Relay connectors

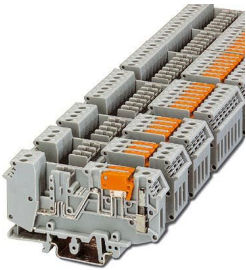
2823625

<https://www.phoenixcontact.com/pc/products/2823625>

## URELG 2-PMTK - Basic terminal block

2820835

<https://www.phoenixcontact.com/pc/products/2820835>



Basic termination blocks with test connection on both sides and knife disconnection for NS 32 and NS 35/7.5 DIN rail, with end cover, for ST-REL..., ST-OV... and ST-OE... plugs, 2-pos.

---

## UDK-RELG 2 - Basic terminal block

2777030

<https://www.phoenixcontact.com/pc/products/2777030>



Basic termination blocks with test connection on both sides and double connections with the same potential for NS 32 and NS 35/7.5 DIN rail, with end cover, for ST-REL..., ST-OV... and ST-OE... plugs, 2-pos.

# ST-REL2-KG 24/1 - Relay connectors

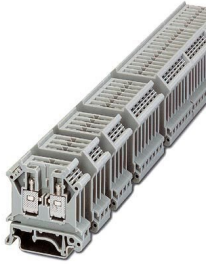
2823625

<https://www.phoenixcontact.com/pc/products/2823625>

## URELG 2 - Basic terminal block

2820262

<https://www.phoenixcontact.com/pc/products/2820262>



Basic termination blocks with screw connection for NS 32 and NS 35/7.5 DIN rail, with end cover, for ST-REL..., ST-OV... and ST-OE... plugs, 2-pos.

---

## ZFK-RELG 2 - Basic terminal block

2829904

<https://www.phoenixcontact.com/pc/products/2829904>



Basic termination blocks with spring-cage connection for NS 35/7.5 DIN rail, with end cover, for ST-REL..., ST-OV... and ST-OE... plugs, 2-pos.

---

Phoenix Contact 2023 © - all rights reserved  
<https://www.phoenixcontact.com>

PHOENIX CONTACT GmbH & Co. KG  
Flachsmarktstraße 8  
D-32825 Blomberg  
+49 (0) 5235-3 00  
[info@phoenixcontact.com](mailto:info@phoenixcontact.com)