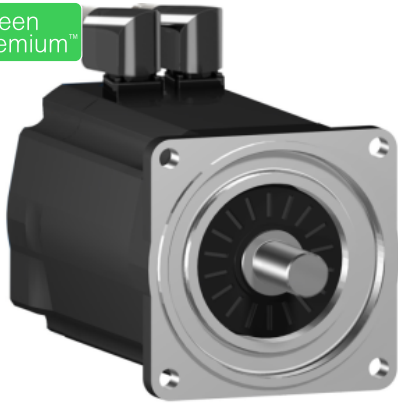


Product data sheet

Specifications



servo motor SH3 100

10Nm,nokey,single,nobrake,90°conn.IP
IP65,6k RPM

SH31004P01A2000

Main

Range compatibility	PacDrive 3
Product or component type	Servo motor
Device short name	SH3.....P

Complementary

Maximum mechanical speed	6000 rpm
[Us] rated supply voltage	115...480 V
Network number of phases	Three phase
Continuous stall current	6.2 A
Continuous stall torque	10 N.m at 115...480 V three phase
Continuous power	2500 W
Peak stall torque	40.5 N.m at 115...480 V three phase
Nominal output power	780 W at 115 V single phase 1490 W at 230 V single phase 2480 W at 400 V three phase 2600 W at 480 V three phase
Nominal torque	9.9 N.m at 115 V single phase 9.5 N.m at 230 V single phase 7.9 N.m at 400 V three phase 6.9 N.m at 480 V three phase
Nominal speed	750 rpm at 115 V single phase 1500 rpm at 230 V single phase 3000 rpm at 400 V three phase 3600 rpm at 480 V three phase
Maximum current Irms	32.3 A
Shaft end	Smooth shaft
Shaft diameter	24 mm
Shaft length	50 mm
IP degree of protection	IP54 shaft bushing without shaft seal ring: conforming to EN/IEC 60034-5 IP65 motor: conforming to EN/IEC 60034-5 IP65 shaft bushing: conforming to EN/IEC 60034-5
Encoder type	Absolute single turn SinCos Hiperface
Speed feedback resolution	128 periods
Holding brake	Without
Mounting support	International standard flange

Motor flange size	100 mm
Electrical connection	rotatable right angled connector
Torque constant	1.62 N.m/A at 120 °C
Back emf constant	103 V/krpm at 20 °C
Number of motor poles	4
Rotor inertia	4.22 kg.cm ²
Stator resistance	1.81 Ohm
Stator inductance	18.35 mH
Maximum radial force Fr	1070 N at 1000 rpm 850 N at 2000 rpm 740 N at 3000 rpm
Maximum axial force Fa	160 N
Type of cooling	Natural convection
Length	276.5 mm
Centring collar diameter	95 mm
Centring collar depth	3.5 mm
Number of mounting holes	4
Mounting holes diameter	9.0 mm
Circle diameter of the mounting holes	115 mm
Net weight	9.2 kg

Packing Units

Unit Type of Package 1	PCE
Number of Units in Package 1	1
Package 1 Weight	10.2 kg
Package 1 Height	26 cm
Package 1 width	20 cm
Package 1 Length	59 cm

Offer Sustainability

Sustainable offer status	Green Premium product
REACH Regulation	REACH Declaration
EU RoHS Directive	Pro-active compliance (Product out of EU RoHS legal scope) EU RoHS Declaration
Mercury free	Yes
RoHS exemption information	Yes
China RoHS Regulation	China RoHS declaration
Environmental Disclosure	Product Environmental Profile
WEEE	The product must be disposed on European Union markets following specific waste collection and never end up in rubbish bins
PVC free	Yes
California proposition 65	WARNING: This product can expose you to chemicals including: Lead and lead compounds, which is known to the State of California to cause cancer and birth defects or other reproductive harm. For more information go to www.P65Warnings.ca.gov

Contractual warranty

Warranty

18 months