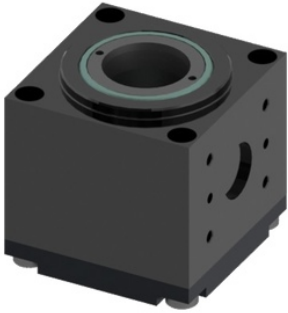


SC Series 5C Closer: SC305C-VHYD



Style	SC
Seal Type	Fluorocarbon
Model	5C
Input Pressure - Pneumatic (psi)	250
Input Pressure - Hydraulic (psi)	750
Minimum Input Pressure (psi)	25
Maximum Diameter - with Thru Collet (in)	1.062500
Temperature (°F)	0-400
Unit Weight without Collet (Base Unit Only)	3 lbs. 12 oz.