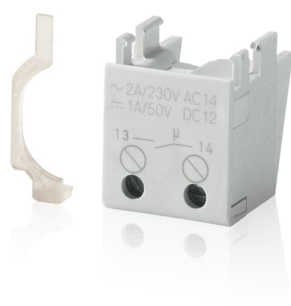


PRODUCT-DETAILS

S2C-H10

S2C-H10 Auxiliary Contact

For sale but "Obsolete", replaced by



General Information

Extended Product Type	S2C-H10
Product ID	2CDS200970R0002
EAN	4016779645522
Catalog Description	S2C-H10 Auxiliary Contact
Long Description	Indication of the position of the device's contacts. S2C-H01 is the opening device and S2C-H10 the closing device. Compared to the S2C-S/H6R, the S2C-H10 entails less cost and many practical benefits. It can be fitted at the bottom of the MCBs and RCDs and is thus much more convenient for retrofitting than the side-mounted device because not all MCBs have to be removed from the rail first. And even when the MCBs affected are connected to a busbar, they do not have to be removed. 50% space can be saved. Suitable for MCBs S200 series, electronic RCBOs DSE200 series.

Technical

Standards	CSA 22.2 No. 235 GB/T 14048.5 UL 1077
Product Name	Auxiliary Contact
Function	Auxiliary Contact
Suitable For	S200 S200M S200MT S200MUC S200P

S200S
SD200

Suitable for Product Class	Miniature Circuit Breaker Residual Current Device
Power Loss	0.5 W
Accessory Type	Auxiliary Contact

Environmental

RoHS Status	Following EU Directive 2011/65/EU
Environmental Information	2CDK400571D0201

Dimensions

Product Net Width	17.4 mm
Product Net Height	21.2 mm
Product Net Depth / Length	23.1 mm
Product Net Weight	0.008 kg

Container Information

Package Level 1 Units	1 piece
Package Level 1 Width	20 mm
Package Level 1 Height	125 mm
Package Level 1 Depth / Length	106 mm
Package Level 1 Gross Weight	0.012 kg
Package Level 1 EAN	4016779645522
Package Level 2 Units	60 piece
Package Level 2 Width	140 mm
Package Level 2 Height	275 mm
Package Level 2 Depth / Length	433 mm
Package Level 2 Gross Weight	2.6 kg
Package Level 2 EAN	4016779830393

Ordering

Minimum Order Quantity	1 piece
Customs Tariff Number	85365080
E-Number (Sweden)	2102505
Replacement Product ID (NEW)	2CDS200970R0032
Country of Origin	Germany (DE)
Selling Unit of Measure	piece

Certificates and Declarations (Document Number)

Declaration of Conformity - CE	2CDK400628D2701
Environmental Information	2CDK400571D0201
Instructions and Manuals	GHS2007009P0008
RoHS Information	2CDK440032D0203

Popular Downloads

Data Sheet, Technical Information	9AKK106930A8017
Instructions and Manuals	GHS2007009P0008

Classifications

ETIM 6	EC001286 - Auxiliary contact unit for distribution board
ETIM 7	EC001286 - Auxiliary device for distribution board devices
ETIM 8	EC001286 - Auxiliary device for distribution board devices
EPLAN Catalog Tree	Electrical engineering / Protection devices / General
EPLAN Function Definition	NO contact / NO contact, 2 connection points / NO auxiliary contact m3_m4
WEEE Category	5. Small Equipment (No External Dimension More Than 50 cm)
WEEE B2C / B2B	Business To Consumer
CN8	8536 50 80
UNSPSC	39121614
eClass	V11.0 : 27143502

Categories

Low Voltage Products and Systems → Modular DIN Rail Products → Miniature Circuit Breakers MCBs Accessories → Auxiliary / Signal Contacts

