

# S-421T Wedge Sockets



Scan this QR code with your smart device to view our Terminator video.

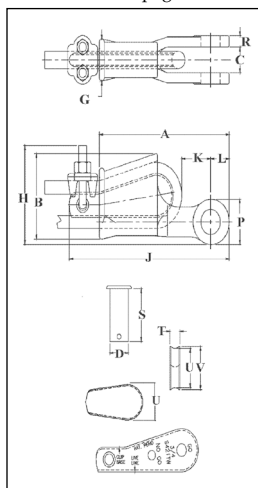
**SEE APPLICATION AND WARNING INFORMATION**

Para Español: [www.thecrosbygroup.com](http://www.thecrosbygroup.com) On Page 58

## S-421T



Wedge sockets meet the performance requirements of Federal Specification RR-S-550E, Type C, except those provisions required of the contractor. For additional information, see page 444.



- Wedge socket terminations have an efficiency rating of 80% based on the catalog strength of XXIP wire rope.
- Meets or exceeds all requirements of ASME B30.26 including identification, ductility, design factor, proof load and temperature requirements. Importantly, these sockets meet other critical performance requirements including fatigue life, impact properties and material traceability, not addressed by ASME B30.26.
- Type Approval and certification in accordance with ABS 2007 Steel Vessel Rules.1-1-17.7, and ABS Guide for Certification of Cranes.
- Basket is cast steel and individually magnetic particle inspected.
- Pin diameter and jaw opening allows wedge and socket to be used in conjunction with closed swage and spelter sockets.
- Secures the tail or "dead end" of the wire rope to the wedge, thus eliminates loss or "Punch out" of the wedge.
- Eliminates the need for an extra piece of rope, and is easily installed.
- The TERMINATOR™ wedge eliminates the potential breaking off of the tail due to fatigue.
- The tail, which is secured by the base of the clip and the wedge, is left undeformed and available for reuse.
- Incorporates Crosby's patented QUIC-CHECK® "Go" and "No-Go" feature cast into the wedge. The proper size rope is determined when the following criteria are met:
  - 1) The wire rope should pass thru the "Go" hole in the wedge.
  - 2) The wire rope should NOT pass thru the "No-Go" hole in the wedge.
- Utilizes standard Crosby Red-U-Bolt® wire rope clip.
- The 3/8" thru 1-1/8" standard S-421 wedge socket can be retrofitted with the new style TERMINATOR™ wedge.
- Available with Bolt, Nut, and Cotter Pin.
- U.S. patent 5,553,360, Canada patent 2,217,004 and foreign equivalents.
- Meets the performance requirements of EN 13411-6: 2003.

## S-421T Wedge Sockets

### Assembly includes Socket, Wedge, Pin and Wire Rope Clip

Wire Rope Dia.		S-421T Stock No.	API 2C S-421T Stock No.	Weight Each (lbs.)	S-421TW Stock No. Wedge Only	API 2C S-421TW Stock No. Wedge Only	Wedge Only Weight Each (lbs.)	Optional G-4082 Bolt, Nut & Cotter	
(in.)	(mm)							G-4082 Stock No.	Weight Each (lbs.)
3/8	9-10	1035000	1035005	3.18	1035555	1092230	.50	1092227	.38
1/2	11-13	1035009	1035014	6.15	1035564	1092248	1.05	1092236	.69
5/8	14-16	1035018	1035023	9.70	1035573	1092257	1.79	1092254	1.15
3/4	18-19	1035027	1035032	14.50	1035582	1092293	2.60	1092281	1.91
7/8	20-22	1035036	1035041	21.50	1035591	1092319	4.00	1092307	3.23
1	24-26	1035045	1035050	30.75	1035600	1092337	5.37	1092325	5.40
1-1/8	28	1035054	1035059	45.30	1035609	1092364	7.30	1092343	7.50
1-1/4	30-32	1035063	1035068	64.90	1035618	1092375	10.60	1092372	10.34

Wire Rope Dia.		S-421T Stock No.	API 2C S-421T Stock No.	Dimensions (in.)														
(in.)	(mm)			A	B	C +/- .09	D	G	H	J*	K*	L	P	R	S	T	U	V
3/8	9-10	1035000	1035005	5.69	2.72	.81	.81	1.38	3.06	7.80	1.88	.88	1.56	.44	2.13	.44	1.25	1.38
1/2	11-13	1035009	1035014	6.88	3.47	1.00	1.00	1.62	3.76	8.91	1.26	1.06	1.94	.50	2.56	.53	1.75	1.88
5/8	14-16	1035018	1035023	8.25	4.30	1.25	1.19	2.12	4.47	10.75	1.99	1.22	2.25	.56	3.25	.69	2.00	2.19
3/4	18-19	1035027	1035032	9.88	5.12	1.50	1.38	2.44	5.28	12.36	2.41	1.40	2.63	.66	3.63	.78	2.34	2.56
7/8	20-22	1035036	1035041	11.25	5.85	1.75	1.63	2.69	6.16	14.37	2.48	1.67	3.13	.75	4.31	.88	2.69	2.94
1	24-26	1035045	1035050	12.81	6.32	2.00	2.00	2.94	6.96	16.29	3.04	2.00	3.75	.88	4.70	1.03	2.88	3.28
1-1/8	28	1035054	1035059	14.38	6.92	2.25	2.25	3.31	7.62	18.34	2.56	2.25	4.25	1.00	5.44	1.10	3.25	3.56
1-1/4	30-32	1035063	1035068	16.34	8.73	2.62	2.50	3.56	9.39	20.48	2.94	2.34	4.50	1.06	6.13	1.19	4.62	4.94

\* Nominal NOTE: For intermediate wire rope sizes, use next larger size socket.

The S-423T Super TERMINATOR™ wedge is designed to be assembled only into the Crosby S-421T TERMINATOR™ socket body.

**IMPORTANT:** The S-423TW for sizes 5/8" through 1-1/8" (14mm through 28mm) will fit respective size standard Crosby S-421T basket. The 1-1/4" (30-32mm) S-423TW will only fit the Crosby S-421T 1-1/4" basket marked with "TERMINATOR™"