

Stopper Cylinder

Series RSQ (Fixed mounting height)

Series RSG (Adjustable mounting height)

ø12, ø16, ø20, ø32, ø40, ø50

ø40, ø50

Realize labor saving and automation of conveyor line

A through-hole style and a both ends tapped style are available.
 Series RSQ (Fixed mounting height type)
 ø12, ø16, ø20, ø32, ø40, ø50

Mounting position can be adjusted arbitrarily by changing the attached flange height.
 Series RSG (Adjustable mounting height type)
 ø40, ø50

Numerous variations

It is possible to select option for many applications.
 Style: Fixed mounting height (RSQ), Adjustable mounting height (RSG)
 Action: Double acting, Single acting (Spring extend), Double acting with spring
 Rod end configuration: Round bar type, Chamfered type, Roller type, Lever type
 Mounting: Through-hole, Both ends tapped (RSQ)
 Flange: (RSG)

Equipped with an easy-to-maintain shock absorber.

The shock absorber incorporated in the lever type is adjustment-free and easy-to-maintain. (ø32, ø40, ø50)

Auto switch option available

Compact auto switch mounting to enable miniaturization of machines and designs.

Lever type selected according to applications

- Prevention of repulsion by light pallets...Locking mechanism
- Partial passing of work.....With cancel

RSQ

RSG

RS□

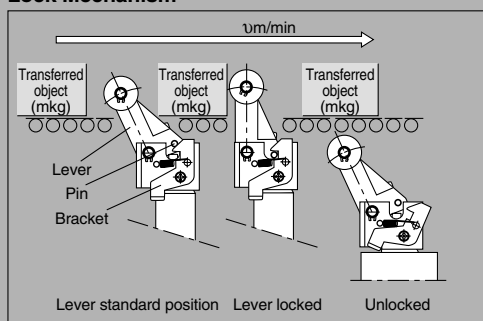
MI□



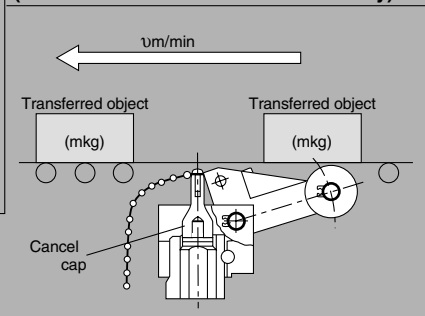
Series RSG

Series RSQ

Lock Mechanism



Cancel Cap (Mechanism to hold lever horizontally)



Series Variations

| Series | Mounting | Action | Rod end configuration | Standard variations | | | | Bore size (mm) | Standard stroke (mm) | | | | | |
|--------|------------------------|----------------------------------|-----------------------------|---------------------|---------------------|-------------|-----------------------------|----------------|----------------------|----|----|----|----|---|
| | | | | Built-in magnet | With lock mechanism | With cancel | Built-in One-touch fittings | | 10 | 15 | 20 | 25 | 30 | |
| RSQ | Through-hole | Double acting | Round bar type | • | | | • | 12 | • | | | | | |
| | | | Roller type | • | | | • | 16 | • | • | | | | |
| | | | Chamfered type | • | | | • | 20 | • | • | • | | | |
| | Both ends tapped style | Double acting with spring loaded | Lever type Fixed | • | | | • | 32 | • | • | • | | | |
| | | | Lever type Adjustable | • | • | | • | 40 | • | • | • | • | | |
| | | | Single acting Spring extend | • | | • | • | 50 | • | • | • | • | • | |
| RSG | Flange style | Double acting | Round bar type | • | | | • | 40 | | | | | | |
| | | | Roller type | • | | | • | | | | | | | |
| | | | Chamfered type | • | | | • | | | | | | | |
| | | Double acting with spring loaded | Lever type Fixed | • | | | • | | 50 | | | | | |
| | | | Lever type Adjustable | • | • | | • | | | | | | | |
| | | | Single acting Spring extend | • | | • | • | | | | • | • | • | • |

D-

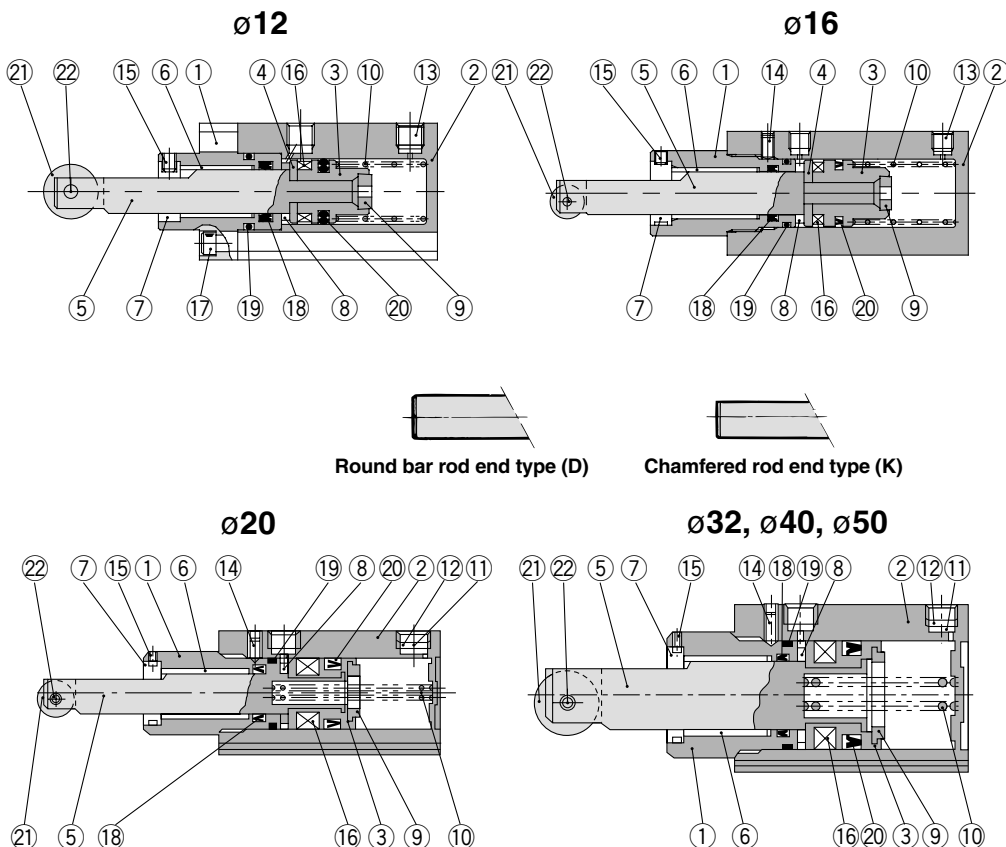
-X

Individual
 -X

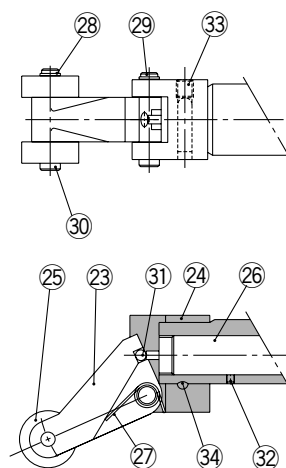
Series RSQ

Construction

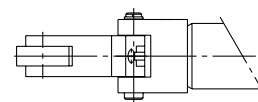
Roller rod end



Built-in shock absorber Lever rod end type (ø32, ø40, ø50 only)



Only one roller is provided for ø32.



Component Parts

| No. | Description | Material | Note |
|-----|--------------------------------|---|---------------------------------------|
| 1 | Rod cover | Aluminum alloy | Anodized* |
| 2 | Cylinder tube | Aluminum alloy | Hard anodized |
| 3 | Piston | Aluminum alloy | Chromated |
| 4 | Spacer for switch | Aluminum alloy | ø12, ø16 only |
| 5 | Piston rod | ø12, ø16, ø20 Stainless steel ø32, ø40, ø50 Carbon steel | Hard chrome plated |
| 6 | Bushing | Copper alloy | |
| 7 | Non-rotating guide | Rolled steel | Non-rotating type only |
| 8 | Bumper A | Urethane | |
| 9 | Bumper B | Urethane | |
| 10 | Return spring | Steel wire | Zinc chromated (Except double acting) |
| 11 | Element | Sintered metallic BC | ø20 to ø50 (Single acting only) |
| 12 | Retaining ring | Carbon tool steel | ø20 to ø50 (Single acting only) |
| 13 | Plug with fixed orifice | Alloy steel | ø12, ø16 only |
| 14 | Hexagon socket head set screw | Chromium molybdenum steel | Except ø12 |
| 15 | Hexagon socket head set screw | Chromium molybdenum steel | |
| 16 | Magnet | — | |
| 17 | Hexagon socket head cap screw | Alloy steel | ø12 only |
| 18 | Rod seal | NBR | |
| 19 | Gasket | NBR | |
| 20 | Piston seal | NBR | |

Roller type

| | | | |
|----|-------------------|-------------------|--|
| 21 | Roller A | Resin | |
| 22 | Spring pin | Carbon tool steel | |

Component Parts (For single acting)

| No. | Description | Material | Note |
|-------------------|---------------------------------------|----------------------------------|--|
| Lever type | | | |
| 23 | Lever | Cast iron | |
| 24 | Lever holder | Rolled steel | |
| 25 | Roller B | Resin | |
| 26 | Shock absorber | — | ø32-RB1007-X225 ø40, 50-RB1407-X552 |
| 27 | Lever spring | Stainless steel wire | |
| 28 | Type C retaining ring for axis | Carbon tool steel | |
| 29 | Lever pin | Carbon steel | |
| 30 | Roller pin | Carbon steel | |
| 31 | Steel balls | High carbon chrome bearing steel | |
| 32 | Hexagon socket head set screw | Chromium molybdenum steel | |
| 33 | Hexagon socket head set screw | Chromium molybdenum steel | |
| 34 | One-side tapered pin | Carbon steel | |

Replacement Parts/Seal Kit

| Bore size (mm) | Kit no. | | | Contents |
|----------------|---------------|----------------------------------|---------------|-----------------------------------|
| | Double acting | Double acting with spring loaded | Single acting | |
| 12 | RSQ12D-PS | RSQ12T-PS | | Set of above nos. (18, 19, 20) |
| 16 | RSQ16D-PS | RSQ16B-PS | RSQ16T-PS | |
| 20 | RSQ20D-PS | RSQ20B-PS | RSQ20T-PS | |
| 32 | RSQ32D-PS | RSQ32B-PS | RSQ32T-PS | |
| 40 | RSQ40D-PS | RSQ40B-PS | RSQ40T-PS | |
| 50 | RSQ50D-PS | RSQ50B-PS | RSQ50T-PS | |

* Seal kit includes (18, 19, 20). Order the seal kit, based on each bore size.

* Since the seal kit does not include a grease pack, order it separately.

Grease pack part no.: GR-S-010 (10g)

Replacement Parts: Shock Absorber

| Bore size (mm) | Kit no. |
|----------------|-------------|
| 32 | RB1007-X225 |
| 40, 50 | RB1407-X552 |