

Parker Moduflex Valve System

Catalogue PDE2536TCUK



ENGINEERING YOUR SUCCESS.

Basic modules (without connector)

Valve Modules		Size 1				Size 2		
Symbol	Description	Actuator	Pilot connector	W (g)	Order code	W (g)	Order code	
	 4/2 Spring return	Solenoid	M8 Lockable	68	P2M1T4ES2C	74	P2M2T4ES2C	
		Air pilot	Clip	68	P2M1T4ES2CW	74	P2M2T4ES2CW	
	 4/2 Double pilot	Solenoid	M8 Lockable	77	P2M1T4EE2C	83	P2M2T4EE2C	
		Air pilot	Clip	77	P2M1T4EE2CW	83	P2M2T4EE2CW	
		 2 x 3/2 NC + NC with exhaust check valves	Solenoid	M8 Lockable	80	P2M1TDDEE2C	94	P2M2TDDEE2C
			Air pilot	Clip	80	P2M1TDDEE2CW	94	P2M2TDDEE2CW
 2 x 3/2 NO + NO with exhaust check valves		Solenoid	M8 Lockable	80	P2M1TCEEE2C	94	P2M2TCEEE2C	
		Air pilot	Clip	80	P2M1TCEEE2CW	94	P2M2TCEEE2CW	
	 2 x 3/2 NC + NO with exhaust check valves	Solenoid	M8 Lockable	80	P2M1TCEPP	84	P2M2TCEPP	
		Air pilot	Clip	80	P2M1TCEPP	84	P2M2TCEPP	
	 2 x 3/2 NC + NO with exhaust check valves	Solenoid	M8 Lockable	80	P2M1TEEE2C	94	P2M2TEEE2C	
		Air pilot	Clip	80	P2M1TEEE2CW	94	P2M2TEEE2CW	
	 2 x 4/2 Spring return with exhaust check valves	Solenoid	M8 Lockable	88	P2M1TJEE2C	88	P2M2TJEE2C	
		Air pilot	Clip	88	P2M1TJEE2CW	88	P2M2TJEE2CW	
	 3/2 NC with exhaust check valves	Solenoid	M8 Lockable	76	P2M1T3ES2C	90	P2M2T3ES2C	
		Air pilot	Clip	76	P2M1T3ES2CW	90	P2M2T3ES2CW	
	 4/3 Centre exhaust 2 x 3/2 NC + NC without exhaust check valves	Solenoid	M8 Lockable	71	P2M1T3PS	70	P2M2T3PS	
		Air pilot	Clip	71	P2M1T3PS	70	P2M2T3PS	
		Solenoid	M8 Lockable	80	P2M1TGEE2C	94	P2M2TGEE2C	
		Air pilot	Clip	80	P2M1TGEE2CW	94	P2M2TGEE2CW	
		Air pilot		70	P2M1TGPP	84	P2M2TGPP	

Island head and intermediate module sets

Valve Modules		Size 2	
Description		W (g)	Order code
 P2M2HXT01	Valve island pneumatic head and tail module set	64	P2M2HXT01
 P2M2BXT0A	Valve island intermediate supply module with a set of 4 configuration plates	64	P2M2BXT0A

Clip-On pneumatic connectors *

Valve Modules		Size 1		Size 2		
Description	Tube OD	W (g)	Order code	W (g)	Order code	
	Straight connector	G1/8"	2	FMDG1-1		
		4 mm	2	FMD04-1		
		6 mm	3	FMD06-1	3	FMD06-2
		8 mm			4	FMD08-2
		10 mm			5	FMD10-2
		12 mm			6	FMD12-2
	Elbow connector	G1/8"	3	CMDG1-1		
		4 mm	3	CMD04-1		
		6 mm	5	CMD06-1	5	CMD06-2
		8 mm			6	CMD08-2
		10 mm			7	CMD10-2
		12 mm			8	CMD12-2
* Fittings and plugs pack quantity: 10						
Silencer				5	MMDVA2	
Plug		3	PMDXX1	5	PMDXX2	

Electrical connectors

Description	Connector type	Cable length	W (g)	Order code		
 M8 lockable connector	Individual lockable connector – IP67	M8 / 2 x Flying leads	2 meters	62	P8LS08L226C	
			5 meters	155	P8LS08L526C	
			9 meters	180	P8LS08L926C	
			2 Flying leads			
 Clip connector	Clip connector – IP40	1 x Clip connector	1 meter	8	P8LW021C	
		Individual: Including 2 flying leads	2 meter	12	P8LW022C	
		Multiple: Including 1 common (0 Vdc) and 1 flying lead per connector	2 x Clip connectors	1 meter	12	P8LW021C02
			4 x Clip connectors	1 meter	20	P8LW021C04
			8 x Clip connectors	1 meter	36	P8LW021C08
 Straight cable quick connect to thread connector, IP67 protected	M8		12	P8CS0803J		
	M12		15	P8CS1204J		

Peripheral Valve Modules: P series

Four additional peripheral modules complete the valve system in order to facilitate the installation of specific cylinder controls:

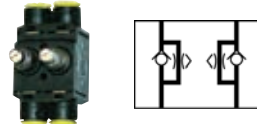
- Dual flow control, for cylinder speed adjusting;
- Dual pilot operated check valve, for cylinder positioning;
- Pressure regulator, for cylinder thrust adjusting;
- Vacuum generator, for vacuum pad controls.



Module function selection

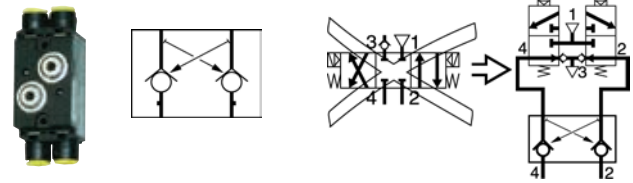
Dual flow control

By controlling the exhaust flows of a double acting cylinder, this module can adjust both speeds: forwards and backwards.



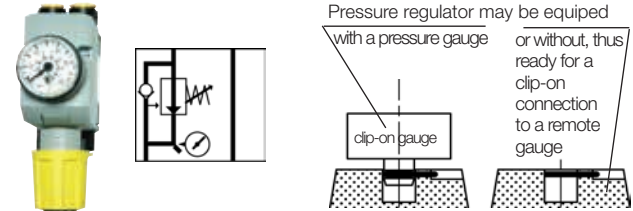
Dual pilot operated check valve

Combined with a double 3/2 NC + NC valve, this module will block flows and stop cylinder movement as soon as the valve outputs are both exhausted. Better than a 3 position closed centre valve, it provides accurate positioning when mounted close to the cylinder.



Pressure regulator

The thrust developed by a cylinder often requires adjustment by controlling the pressure to the front or back of the piston. This pressure regulator module enables manual adjustment of pressure on one side of the piston, with visual indication provided by the pressure gauge.

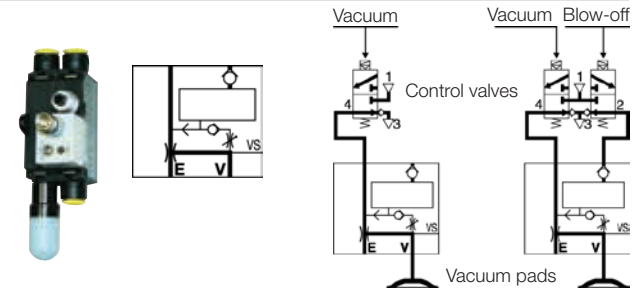


Vacuum generator

This multi-purpose module controls vacuum pads with a choice between two basics schematics:

- Controlled with only one 3/2 NC valve, the vacuum generator provides vacuum to the pads during valve actuation and then blow-off supplied from an integrated chamber.
- Controlled with a double 3/2 NC + NC, the vacuum generator provides vacuum during the first valve actuation, and then strong blow-off from the second valve.

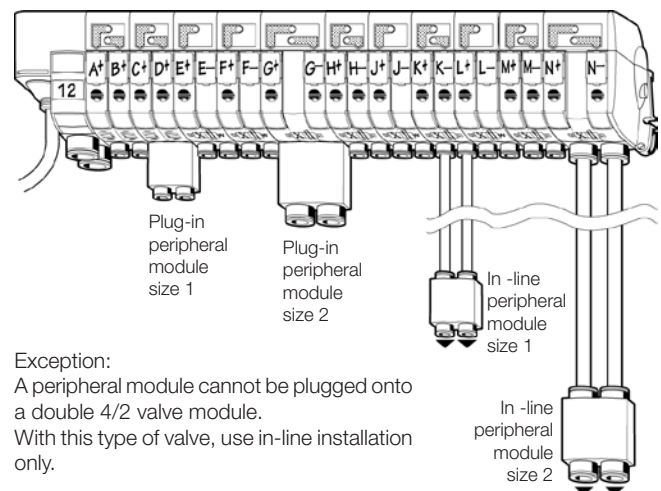
Integrated blow-off flow controller. Optional plug-in vacuum sensor.



Module installation selection



- Peripheral modules may either be mounted:
- Plugged into the valve module through double male unions;
 - Or in line, close to the cylinder to control it better.



Exception:
A peripheral module cannot be plugged onto a double 4/2 valve module. With this type of valve, use in-line installation only.

Parker Worldwide

Europe, Middle East, Africa

AE – United Arab Emirates, Dubai
Tel: +971 4 8127100
parker.me@parker.com

AT – Austria, Wiener Neustadt
Tel: +43 (0)2622 23501-0
parker.austria@parker.com

AT – Eastern Europe, Wiener Neustadt
Tel: +43 (0)2622 23501 900
parker.easteurope@parker.com

AZ – Azerbaijan, Baku
Tel: +994 50 2233 458
parker.azerbaijan@parker.com

BE/LU – Belgium, Nivelles
Tel: +32 (0)67 280 900
parker.belgium@parker.com

BG – Bulgaria, Sofia
Tel: +359 2 980 1344
parker.bulgaria@parker.com

BY – Belarus, Minsk
Tel: +48 (0)22 573 24 00
parker.poland@parker.com

CH – Switzerland, Etoy
Tel: +41 (0)21 821 87 00
parker.switzerland@parker.com

CZ – Czech Republic, Klecany
Tel: +420 284 083 111
parker.czechrepublic@parker.com

DE – Germany, Kaarst
Tel: +49 (0)2131 4016 0
parker.germany@parker.com

DK – Denmark, Ballerup
Tel: +45 43 56 04 00
parker.denmark@parker.com

ES – Spain, Madrid
Tel: +34 902 330 001
parker.spain@parker.com

FI – Finland, Vantaa
Tel: +358 (0)20 753 2500
parker.finland@parker.com

FR – France, Contamine s/Arve
Tel: +33 (0)4 50 25 80 25
parker.france@parker.com

GR – Greece, Athens
Tel: +30 210 933 6450
parker.greece@parker.com

HU – Hungary, Budaörs
Tel: +36 23 885 470
parker.hungary@parker.com

IE – Ireland, Dublin
Tel: +353 (0)1 466 6370
parker.ireland@parker.com

IL – Israel
Tel: +39 02 45 19 21
parker.israel@parker.com

IT – Italy, Corsico (MI)
Tel: +39 02 45 19 21
parker.italy@parker.com

KZ – Kazakhstan, Almaty
Tel: +7 7273 561 000
parker.easteurope@parker.com

NL – The Netherlands, Oldenzaal
Tel: +31 (0)541 585 000
parker.nl@parker.com

NO – Norway, Asker
Tel: +47 66 75 34 00
parker.norway@parker.com

PL – Poland, Warsaw
Tel: +48 (0)22 573 24 00
parker.poland@parker.com

PT – Portugal
Tel: +351 22 999 7360
parker.portugal@parker.com

RO – Romania, Bucharest
Tel: +40 21 252 1382
parker.romania@parker.com

RU – Russia, Moscow
Tel: +7 495 645-2156
parker.russia@parker.com

SE – Sweden, Spånga
Tel: +46 (0)8 59 79 50 00
parker.sweden@parker.com

SL – Slovenia, Novo Mesto
Tel: +386 7 337 6650
parker.slovenia@parker.com

TR – Turkey, Istanbul
Tel: +90 216 4997081
parker.turkey@parker.com

UA – Ukraine, Kiev
Tel: +48 (0)22 573 24 00
parker.poland@parker.com

UK – United Kingdom, Warwick
Tel: +44 (0)1926 317 878
parker.uk@parker.com

ZA – South Africa, Kempton Park
Tel: +27 (0)11 961 0700
parker.southafrica@parker.com

North America

CA – Canada, Milton, Ontario
Tel: +1 905 693 3000

US – USA, Cleveland
Tel: +1 216 896 3000

Asia Pacific

AU – Australia, Castle Hill
Tel: +61 (0)2-9634 7777

CN – China, Shanghai
Tel: +86 21 2899 5000

HK – Hong Kong
Tel: +852 2428 8008

IN – India, Mumbai
Tel: +91 22 6513 7081-85

JP – Japan, Tokyo
Tel: +81 (0)3 6408 3901

KR – South Korea, Seoul
Tel: +82 2 559 0400

MY – Malaysia, Shah Alam
Tel: +60 3 7849 0800

NZ – New Zealand, Mt Wellington
Tel: +64 9 574 1744

SG – Singapore
Tel: +65 6887 6300

TH – Thailand, Bangkok
Tel: +662 186 7000

TW – Taiwan, Taipei
Tel: +886 2 2298 8987

South America

AR – Argentina, Buenos Aires
Tel: +54 3327 44 4129

BR – Brazil, Sao Jose dos Campos
Tel: +55 800 727 5374

CL – Chile, Santiago
Tel: +56 2 623 1216

MX – Mexico, Toluca
Tel: +52 72 2275 4200

European Product Information Centre

Free phone: 00 800 27 27 5374

(from AT, BE, CH, CZ, DE, DK, EE, ES, FI, FR, IE, IL, IS, IT, LU, MT, NL, NO, PL, PT, RU, SE, SK, UK, ZA)

