

## NELES® ND9000 INTELLIGENT VALVE CONTROLLER

Metso's Neles ND9000 is a top class intelligent valve controller designed to operate on all control valve actuators and in all industry areas. It guarantees end product quality in all operating conditions with unique diagnostics and incomparable performance features. ND9000 is a reliable and future-proof investment with Metso FieldCare™ life-time support

### KEY FEATURES

- Benchmark control performance on rotary and linear valves
- Reliable and robust design
- Easy commissioning and operation
- Safety; IEC 61508 compliant up to and including SIL 2 by TUV
- Language selection: English, German and French
- Local / remote operation
- Expandable architecture
- Advanced device diagnostics including
  - Self-diagnostics
  - Online diagnostics
  - Performance diagnostics
  - Communication diagnostics
  - Extended off-line tests
  - Performance view
  - Online Valve Signature

### Options

- Interchangeable communication options:
  - HART 6 or 7 (H)
  - FOUNDATION fieldbus
  - Profibus PA
- Limit switches
- Position transmitter (in HART only)
- Full stainless steel enclosure
- Exhaust adapter
- Remote mounting
- Arctic version (up to -53 °C / -64 °F)

### Total cost of ownership

- Low energy and air consumption
- Future proof design allows further options at a reduced cost
- Optimized spares program minimizes spare part inventory
- Retro-fit to existing installations (Neles or 3rd party valves)

### Minimized process variability

- Linearisation of the valve flow characteristics
- Excellent dynamic and static control performance
- Fast response to control signal change
- Accurate internal measurements



### Easy installation and configuration

- Same device can be used for linear and rotary valves, double and single-acting actuators
- Simple fast calibration and configuration
  - using Local User Interface (LUI)
  - using FieldCare software in a remote location
  - using Distributed Control System (DCS) asset management tools
- Extensive selection of mounting kits for 3rd party actuators
- Low power consumption enables installation to all common control systems

### Open solution

- Metso is committed to delivering products that freely interface with software and hardware from a variety of manufacturers; ND9000 is no exception. This open architecture allows the ND9000 to be integrated with other field devices to give an unprecedented level of controllability.
- FDT and EDD based multi-vendor support configuration
- Support files for ND9000 are available from our internet pages, at [www.metso.com/valves](http://www.metso.com/valves) - choose the link: download center

### Neles ND9000 in fieldbus networks

- Approved interoperability
  - Host interoperability ensured
  - FOUNDATION fieldbus ITK version 6.1.2 certified
  - Profibus PA profile version 3.0 PNO certified
- Easy to upgrade; by replacing the HART communication board with a fieldbus communication board
- Excellent maintainability with firmware download feature
- Advanced communication diagnostics
- Digital communication via the fieldbus includes not only the set point, but also the position feedback signal from the position sensor. No special supplementary modules for analog or digital position feedback are needed when using the fieldbus valve controller.
- Back up LAS functionality available in FOUNDATION fieldbus environment
- Input selector and output splitter blocks available in FOUNDATION fieldbus devices allowing advanced distributed control
- Standard function blocks enables the freedom to use the ND9000 intelligent valve controller in either continuous or on-off control applications
- Open and close information is directly available via the fieldbus
- Open and close detection is based on either position measurement (soft limit switch) or mechanical limit switch information

### ND9000 mounting on actuators and valves

- Mounted on single and double acting actuators
- Both rotary and linear valves
- Ability to attach options to electronics and mechanics later
- 1-point calibration feature enables mounting without disturbing the process

### Product reliability

- Designed to operate in harsh environmental conditions
- Rugged modular design
- Excellent temperature characteristics
- Vibration and impact tolerant
- IP66 enclosure
- Stainless steel enclosure (ND9300 and ND9400)
- Protected against humidity
- Maintenance free operation
- Resistant to dirty air
- Wear resistant and sealed components
- Contactless position measurement

### Predictive maintenance

- Easy access to collected data with Metso FieldCare software
- Unique Online Valve Signature to detect valve friction even more accurately.
- Performance view with report, which gives guidelines for recommended actions.
- Logical trend and histogram collection
- Information collected during process uptime
- Extensive set of off-line tests with accurate key figure calculations
- Fast notifications with on-line alarms
- Condition monitoring tool available
- Real time monitoring of valve control parameters

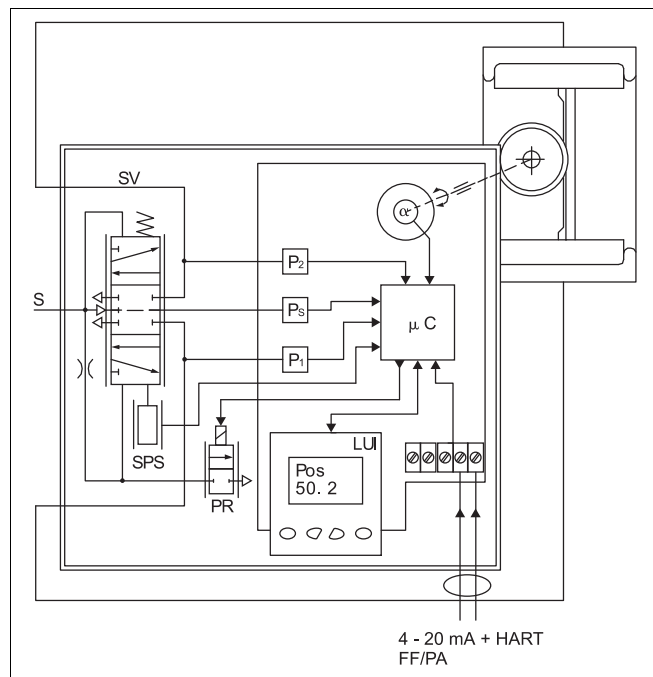
### TECHNICAL DESCRIPTION

The ND9000 is a 4–20 mA or fieldbus powered microcontroller-based intelligent valve controller. The device contains a Local User Interface (LUI) enabling local configuration. A PC with FieldCare software can be connected to the ND9000 itself or to the control loop.

The powerful 32-bit microcontroller controls the valve position. The measurements include:

- Input signal
- Valve position with contactless sensor
- Actuator pressures, 2 independent measurements
- Supply pressure
- Spool valve position
- Device temperature

Advanced self-diagnostics guarantees that all measurements operate correctly. After connections of electric signal and pneumatic supply, the micro controller ( $\mu C$ ) reads the input signal, position sensor ( $\alpha$ ), pressure sensors ( $P_s$ ,  $P_1$ ,  $P_2$ ) and spool position sensor (SPS). A difference between input signal and position sensor ( $\alpha$ ) measurement is detected by control algorithm inside the  $\mu C$ . The  $\mu C$  calculates a new value for prestage (PR) coil current based on the information from the input signal and from the sensors. The changed current to the PR changes the pilot pressure to the spool valve. Reduced pilot pressure moves the spool and the actuator pressures change accordingly. The spool opens the flow to the driving side of the double diaphragm actuator and opens the flow out from the other side of the actuator. The increasing pressure will move the diaphragm piston. The actuator and feedback shaft rotate. The position sensor ( $\alpha$ ) measures the rotation for the  $\mu C$ . The  $\mu C$  using control algorithm modulates the PR-current from the steady state value until the new position of the actuator, according to the input signal, is reached.



## TECHNICAL SPECIFICATIONS

### ND9000 INTELLIGENT VALVE CONTROLLER

#### General

Loop powered, no external power supply required.  
 Suitable for rotary and linear valves.  
 Actuator connections in accordance with VDI/VDE 3845 and IEC 60534-6 standards.  
 Flush mounting on selected actuators  
 Action: Double or single acting  
 Travel range: Linear; 10–120 mm / 0.4–4.7 in  
 rotary; 45–95 degrees. Measurement range 110° with freely rotating feedback shaft.

#### Environmental influence

Standard temperature range:  
 -40° – +85 °C / -40° – +185 °F  
 Arctic temperature range: -53° – +85 °C / -64° – +185 °  
 Influence of temperature on valve position:  
 0.5 % / 10 °K  
 Influence of vibration on valve position:  
 < 1 % under 2g 5–150 Hz,  
 1g 150–300 Hz, 0.5g 300–2000 Hz

#### Enclosure

Material: ND9100: Anodized aluminum alloy and polymer composite  
 ND9200: Anodised aluminum alloy and tempered glass  
 ND9400: Stainless steel and polymer composite  
 ND9300: Stainless steel  
 Protection class: IP66, Nema 4x  
 Pneumatic ports: G 1/4 (ND9100)  
 1/4 NPT (ND9200, ND9300 & ND9400)  
 Cable gland thread: M20x1.5 (ND9000 )  
 1/2 NPT (ND9000E2, ND9000U)  
 Weight: 1.8 kg / 4.0 lbs (ND9100)  
 3.4 kg / 7.5 lbs (ND9200)  
 5.6 kg / 12.4 lbs (ND9400)  
 8.6 kg / 19.0 lbs (ND9300)  
 Mechanical and digital position indicator visible through main cover, not applicable to ND9200E2 and ND9300.  
 Special corrosion resistant design or stainless steel housing available as an option for demanding environment.

#### Pneumatics

Supply pressure: 1.4–8 bar / 20–115 psi  
 Effect of supply pressure on valve position:  
 < 0.1 % at 10 % difference in inlet pressure  
 Air quality: Acc. to ISO 8573-1  
 Solid particles: Class 5 (3 – 5 µm filtration is recommended)  
 Humidity: Class 1 (dew point 10 °C / 18 °F below minimum temperature is recommended)  
 Oil class: 3 ( or < 1 ppm)  
 Capacity with 4 bar / 60 psi supply:  
 5.5 Nm<sup>3</sup>/h / 3.3 scfm (spool valve 2)  
 12 Nm<sup>3</sup>/h / 7.1 scfm (spool valve 3)  
 38 Nm<sup>3</sup> /h / 22,4 scfm (spool valve 6)  
 Consumption with 4 bar / 60 psi supply in steady state position:  
 < 0.6 Nm<sup>3</sup>/h / 0.35 scfm (spool valve 2 & 3)  
 < 1.0 Nm<sup>3</sup>/h / 0.6 scfm (spool valve 6)

#### Electronics

**HART**  
 Supply power: Loop powered, 4–20 mA  
 Minimum signal: 3.6 mA  
 Current max : 120 mA  
 Load voltage: up to 9.7 VDC/20 mA (corresponding 485 Ω)  
 Voltage: max. 30 VDC  
 Polarity protection: -30 VDC  
 Over current protection: active over 35 mA

#### Profibus PA and FOUNDATION fieldbus

Supply power: voltage 9–32 VDC, reverse polarity protection  
 Max basic current: 17.2 mA  
 Quiescent Current Draw: 16 mA  
 Fault current (FDE): 3.9 mA

#### FOUNDATION fieldbus function block execution times

AO	20 ms
AI	20 ms
PID	20 ms
DO	20 ms
DI	15 ms
IS	15 ms
OS	15 ms

#### Performance with moderate constant-load actuators

Dead band: ≤ 0.1 %  
 Hysteresis: < 0.5 %

#### Local User Interface (LUI) functions

- Local control of the valve
- Monitoring of valve position, target position, input signal, temperature, supply and actuator pressure difference
- Guided-startup function
- LUI may be locked remotely to prevent unauthorised access
- Calibration: Automatic / Manual linearization
- 1-point calibration
- Control configuration: aggressive, fast, optimum, stable, maximum stability
- HART version configuration: HART 6 or HART 7
- Configuration of the control valve
  - Rotation: valve rotation clockwise or counter-clockwise to close
  - Dead Angle
  - Low cut-off, cut-off safety range (default 2 %)
  - Positioner fail action, open/close
  - Signal direction: Direct/reverse acting
  - Actuator type, double/single acting
  - Valve type, rotary/linear
  - Language selection: English, German and French

#### Position transmitter (optional)

Output signal: 4–20 mA (galvanic isolation); 600 VDC  
 Supply voltage: 12–30 VDC  
 Resolution: 16 bit / 0.244 µA  
 Linearity: < 0.05 % FS  
 Temperature effect: < 0.35 % FS  
 External load: max 0–780 Ω  
 max 0–690 Ω for intrinsically safe  
 Ex ia IIC T6 Ui ≤ 28 V  
 Ex d IIC T4/T5/T6 Ui ≤ 30 V

**APPROVALS AND ELECTRICAL VALUES, HART**

Certificate	Approval	Electrical values
<b>ATEX</b>		
<b>ND_X</b> VTT 09 ATEX 033X VTT 09 ATEX 034X  EN 60079-0: 2009/2012 EN 60079-11: 2012 EN 60079-26: 2007 EN 60079-31: 2008  EN 60079-0: 2009/2012 EN 60079-11: 2012 EN 60079-15: 2010 EN 60079-31: 2008	II 1 G Ex ia IIC T6...T4 Ga II 1 D Ex ta IIIC T90 °C Da II 2 G Ex ib IIC T6...T4 Gb II 2 D Ex tb IIIC T90 °C Db	Input: $U_i \leq 28\text{ V}$ , $I_i \leq 120\text{ mA}$ , $P_i \leq 1\text{ W}$ , $C_i \leq 22\text{ nF}$ , $L_i \leq 53\text{ }\mu\text{H}$ . Output: $U_i \leq 28\text{ V}$ , $I_i \leq 120\text{ mA}$ , $P_i \leq 1\text{ W}$ , $C_i \leq 22\text{ nF}$ , $L_i \leq 53\text{ }\mu\text{H}$ , external load resistance 0–690 $\Omega$
	II 3 G Ex nA IIC T6...T4 Gc II 3 D Ex tc IIIC T90 °C Dc	Input: $U_i \leq 30\text{ V}$ , $I_i \leq 152\text{ mA}$ Output: $U_i \leq 30\text{ V}$ , $I_i \leq 152\text{ mA}$
	II 3 G Ex ic IIC T6...T4 Gc II 3 D Ex tc IIIC T90 °C Dc	Input: $U_i \leq 30\text{ V}$ , $I_i \leq 152\text{ mA}$ , $P_{\text{max}} = \text{device limits itself}$ , $C_i \leq 22\text{ nF}$ , $L_i \leq 53\text{ }\mu\text{H}$ . Output: $U_i \leq 30\text{ V}$ , $I_i \leq 152\text{ mA}$ , $P_{\text{max}} = \text{device limits itself}$ , $C_i \leq 22\text{ nF}$ , $L_i \leq 53\text{ }\mu\text{H}$ , external load resistance 0–780 $\Omega$
<b>ND_E1</b> SIRA 11 ATEX 1006X  EN 60079-0:2009 EN 60079-1:2007 EN 60079-31:2009	II 2 G Ex d IIC T6...T4 Gb II 2 D Ex tb IIIC T80 °C...T105 °C Db	Input: $U_i \leq 30\text{ V}$ Output: $U_i \leq 30\text{ V}$ , $P_{\text{max}} = \text{device limits itself}$ , external load resistance 0–780 $\Omega$
<b>IECEX</b>		
<b>ND_X</b> IECEX VTT 10.0004X IECEX VTT 10.0005X  IEC 60079-0: 2007/2011 IEC 60079-11: 2011 IEC 60079-26: 2006 IEC 60079-31: 2008  IEC 60079-0: 2007/2011 IEC 60079-11: 2011 IEC 60079-15: 2010, IEC 60079-31: 2008	Ex ia IIC T6...T4 Ga Ex ta IIIC T90 °C Da Ex ib IIC T6...T4 Gb Ex tb IIIC T90 °C Db	Input: $U_i \leq 28\text{ V}$ , $I_i \leq 120\text{ mA}$ , $P_i \leq 1\text{ W}$ , $C_i \leq 22\text{ nF}$ , $L_i \leq 53\text{ }\mu\text{H}$ Output: $U_i \leq 28\text{ V}$ , $I_i \leq 120\text{ mA}$ , $P_i \leq 1\text{ W}$ , $C_i \leq 22\text{ nF}$ , $L_i \leq 53\text{ }\mu\text{H}$ , external load resistance 0–690 $\Omega$
	Ex nA IIC T6...T4 Gc Ex tc IIIC T90 °C Dc	Input: $U_i \leq 30\text{ V}$ , $I_i \leq 152\text{ mA}$ Output: $U_i \leq 30\text{ V}$ , $I_i \leq 152\text{ mA}$
	Ex ic IIC T6...T4 Gc Ex tc IIIC T90 °C Dc	Input: $U_i \leq 30\text{ V}$ , $I_i \leq 152\text{ mA}$ , $P_{\text{max}} = \text{device limits itself}$ , $C_i \leq 22\text{ nF}$ , $L_i \leq 53\text{ }\mu\text{H}$ Output: $U_i \leq 30\text{ V}$ , $I_i \leq 152\text{ mA}$ , $P_{\text{max}} = \text{device limits itself}$ , $C_i \leq 22\text{ nF}$ , $L_i \leq 53\text{ }\mu\text{H}$ , external load resistance 0–780 $\Omega$
<b>ND_E1</b> IECEX SIR 11.0001X  IEC 60079-0:2011 IEC 60079-1:2007 IEC 60079-31:2008	Ex d IIC T6...T4 Gb Ex tb IIIC T80 °C...T105 °C Db	Input: $U_i \leq 30\text{ V}$ Output: $U_i \leq 30\text{ V}$ , $P_{\text{max}} = \text{device limits itself}$ , external load resistance 0–780 $\Omega$
<b>INMETRO</b>		
<b>ND_Z</b> NCC 12.0793 X NCC 12.0794 X  ABNT NBR IEC 60079-0:2013 ABNT NBR IEC 60079-11:2009 ABNT NBR IEC 60079-26:2008 (2009) ABNT NBR IEC 60079-27:2010  ABNT NBR IEC 60079-0:2013 ABNT NBR IEC 60079-11:2009 IEC 60079-15:2012 ABNT NBR IEC 60079-27:2010 ABNT NBR IEC 60529:2005	Ex ia IIC T4/T5/T6 Ga Ex ia IIC T4/T5/T6 Gb	Input: $U_i \leq 28\text{ V}$ , $I_i \leq 120\text{ mA}$ , $P_i \leq 1\text{ W}$ , $C_i \leq 22\text{ nF}$ , $L_i \leq 53\text{ }\mu\text{H}$ Output: $U_i \leq 28\text{ V}$ , $I_i \leq 120\text{ mA}$ , $P_i \leq 1\text{ W}$ , $C_i \leq 22\text{ nF}$ , $L_i \leq 53\text{ }\mu\text{H}$ , external load resistance 0–690 $\Omega$ .
	Ex nA IIC T4/T5/T6 Gc	Input: $U_i \leq 30\text{ V}$ , $I_i \leq 152\text{ mA}$ Output: $U_i \leq 30\text{ V}$ , $I_i \leq 152\text{ mA}$
	Ex ic IIC T4/T5/T6 Gc	Input: $U_i \leq 30\text{ V}$ , $I_i \leq 152\text{ mA}$ , $P_{\text{max}} = \text{device limits itself}$ , $C_i \leq 22\text{ nF}$ , $L_i \leq 53\text{ }\mu\text{H}$ . Output: $U_i \leq 30\text{ V}$ , $I_i \leq 152\text{ mA}$ , $P_{\text{max}} = \text{device limits itself}$ , $C_i \leq 22\text{ nF}$ , $L_i \leq 53\text{ }\mu\text{H}$ , external load resistance 0–780 $\Omega$ .
<b>ND_E5</b> NCC 12.0795 X ABNT NBR IEC 60079-0:2013 ABNT NBR IEC 60079-1:2009 (2011) ABNT NBR IEC 60079-31:2011 ABNT NBR IEC 60529:2005	Ex d IIC T4/T5/T6 Gb Ex tb IIIC T100 °C Db IP66	Input: $U_i \leq 30\text{ V}$ Output: $U_i \leq 30\text{ V}$ , $P_{\text{max}} = \text{device limits itself}$ , external load resistance 0–780 $\Omega$
<b>CCSAus</b>		
<b>ND_U</b>	IS Class I, Division 1, Groups A, B, C, D, T4...T6 IS Class I, Zone 0, AEx ia, IIC T4...T6	Input: $U_i \leq 28\text{ V}$ , $I_i \leq 120\text{ mA}$ , $P_i \leq 1\text{ W}$ , $C_i \leq 22\text{ nF}$ , $L_i \leq 53\text{ }\mu\text{H}$ Output: $U_i \leq 28\text{ V}$ , $I_i \leq 120\text{ mA}$ , $P_i \leq 1\text{ W}$ , $C_i \leq 22\text{ nF}$ , $L_i \leq 53\text{ }\mu\text{H}$ , external load resistance 0–690 $\Omega$ .
	NI Class I, Division 2, Groups A, B, C, D, T4...T6 NI Class I, Zone 2, Ex nA IIC T4...T6.	Input: $U_i \leq 30\text{ V}$ , $P_{\text{max}} = \text{device limits itself}$ , $C_i \leq 22\text{ nF}$ , $L_i \leq 53\text{ }\mu\text{H}$ Output: $U_i \leq 30\text{ V}$ , $I_i \leq 152\text{ mA}$ , $P_{\text{max}} = \text{device limits itself}$ , $C_i \leq 22\text{ nF}$ , $L_i \leq 53\text{ }\mu\text{H}$ , external load resistance 0–780 $\Omega$ .
<b>ND_E5</b> 1980091	Class I, Div 1, Groups B, C, D; Class II, Div 1, Groups E,F,G; Class III; T4...T6, Enclosure type 4X Ex d IIC T4...T6 AEx d IIC T4...T6 Ex tb IIIC T100 °C IP66 AEx tb IIIC T100 °C IP66	Input: $U_i \leq 30\text{ V}$ Output: $U_i \leq 30\text{ V}$ , $P_{\text{max}} = \text{device limits itself}$ , external load resistance 0–780 $\Omega$
<b>TIIS (JIS)</b>		
<b>ND_E4</b>	Ex d IIC T6	Input: $U_i \leq 30\text{ V}$ Output: $U_i \leq 30\text{ V}$ , $P_{\text{max}} = \text{device limits itself}$ , external load resistance 0–780 $\Omega$ .

## APPROVALS AND ELECTRICAL VALUES, FOUNDATION fieldbus and Profibus PA

Certificate	Approval	Electrical values
<b>ATEX</b>		
<b>ND_X</b> VTT 09 ATEX 033X VTT 09 ATEX 034X  EN 60079-0: 2009/2012 EN 60079-11: 2012 EN 60079-26: 2007 EN 60079-31: 2008  EN 60079-0: 2009/2012 EN 60079-11: 2012 EN 60079-15: 2010 EN 60079-31: 2008	II 1 G Ex ia IIC T6...T4 Ga II 1 D Ex ta IIIC T90 °C Da II 2 G Ex ib IIC T6...T4 Gb II 2 D Ex tb IIIC T90 °C Db	Ui ≤ 24 V, li ≤ 380 mA, Pi ≤ 5.32 W, Ci ≤ 5 nF, Li ≤ 10 µH. Comply with the requirements for FISCO field device
	II 3 G Ex nA IIC T6...T4 Gc II 3 D Ex tc IIIC T90 °C Dc	Ui ≤ 24 V
	II 3 G Ex ic IIC T6...T4 Gc II 3 D Ex tc IIIC T90 °C Dc	Ui ≤ 32 V, li ≤ 380 mA, Pi ≤ 5.32 W, Ci ≤ 5 nF, Li ≤ 10 µH. Comply with the requirements for FISCO field device
<b>ND_E1</b> SIRA 11 ATEX 1006X EN 60079-0:2009 EN 60079-1:2007 EN 60079-31:2009	II 2 G Ex d IIC T6...T4 Gb II 2 D Ex tb IIIC T80 °C...T105 °C Db	Ui ≤ 32 V
<b>IECEX</b>		
<b>ND_X</b> IECEX VTT 10.0004X IECEX VTT 10.0005X  IEC 60079-0: 2007/2011 IEC 60079-11: 2011 IEC 60079-26: 2006 IEC 60079-31: 2008  IEC 60079-0: 2007/2011 IEC 60079-11: 2011 IEC 60079-15: 2010, IEC 60079-31: 2008	Ex ia IIC T6...T4 Ga Ex ta IIIC T90 °C Da Ex ib IIC T6...T4 Gb Ex tb IIIC T90 °C Db	Ui ≤ 24 V, li ≤ 380 mA, Pi ≤ 5.32 W, Ci ≤ 5 nF, Li ≤ 10 µH. Comply with the requirements for FISCO field device
	Ex nA IIC T6...T4 Gc Ex tc IIIC T90 °C Dc	Ui ≤ 24 V
	Ex ic IIC T6...T4 Gc Ex tc IIIC T90 °C Dc	Ui ≤ 32 V, li ≤ 380 mA, Pi ≤ 5.32 W, Ci ≤ 5 nF, Li ≤ 10 µH. Comply with the requirements for FISCO field device
<b>ND_E1</b> IECEX SIR 11.0001X IEC 60079-0:2011 IEC 60079-1:2007 IEC 60079-31:2008	Ex d IIC T6...T4 Gb Ex tb IIIC T80 °C...T105 °C Db	Ui ≤ 32 V
<b>INMETRO</b>		
<b>ND_Z</b> NCC 12.0793 X NCC 12.0794 X  ABNT NBR IEC 60079-0:2008 (2011) ABNT NBR IEC 60079-11:2009 ABNT NBR IEC 60079-26:2008 (2009) ABNT NBR IEC 60079-27:2010  ABNT NBR IEC 60079-0:2008 (2011) ABNT NBR IEC 60079-11:2009 IEC 60079-15:2010 ABNT NBR IEC 60079-27:2010 ABNT NBR IEC 60529:2009	Ex ia IIC T4/T5/T6 Ga Ex ia IIC T4/T5/T6 Gb	Ui ≤ 24 V, li ≤ 380 mA, Pi ≤ 5.32 W, Ci ≤ 5 nF, Li ≤ 10 µH. Comply with the requirements for FISCO field device
	Ex nA IIC T4/T5/T6 Gc Ui ≤ 24 V	
	Ex ic IIC T4/T5/T6 Gc	Ui ≤ 32 V, li ≤ 380 mA, Pi ≤ 5.32 W, Ci ≤ 5 nF, Li ≤ 10 µH. Comply with the requirements for FISCO field device
<b>ND_E5</b> NCC 12.0795 X ABNT NBR IEC 60079-0:2008 (2011) ABNT NBR IEC 60079-1:2009 (2011) ABNT NBR IEC 60079-31:2011 ABNT NBR IEC 60529:2009	Ex d IIC T4/T5/T6 Gb Ex tb IIIC T100 °C Db IP66	Ui ≤ 32 V
<b>cCSAus</b>		
<b>ND_U</b>	IS Class I, Division 1, Groups A, B, C, D, T4...T6 IS Class I, Zone 0, AEx ia, IIC T4...T6	Ui ≤ 24 V, li ≤ 380 mA, Pi ≤ 5.32 W, Ci ≤ 5 nF, Li ≤ 10 µH
	NI Class I, Division 2, Groups A, B, C, D, T4...T6. NI Class I, Zone 2, Ex nA IIC T4...T6.	Ui ≤ 24 V, li ≤ 380 mA, Pi ≤ 5.32 W, Ci ≤ 5 nF, Li ≤ 10 µH
<b>ND_E5</b> 1980091	Class I, Div 1, Groups B, C, D; Class II, Div 1, Groups E, F, G; Class III; T4...T6, Enclosure type 4X Ex d IIC T4...T6 AEx d IIC T4...T6 Ex tb IIIC T100 °C IP66 AEx tb IIIC T100 °C IP66	Ui ≤ 32 V

**Electromagnetic Protection**

Electromagnetic compability acc. to  
Emission: EN 61000-6-4 (2007) + A1(2011)  
Immunity: EN 61000-6-2 (2005)

**Safety**

IEC 61508 compliant up to and  
including SIL 2 by TUV

**CE marking**

EMC 2014/30/EU

ATEX 94/9/EC (until 19 April 2016)  
ATEX 2014/34/EU (from 20 April 2016)

**PROXIMITY SENSORS AND LIMIT SWITCHES  
(OPTIONAL WITH EXTENSION MODULE FOR ND9100,  
ND9200 & ND9300)**

- Code D33 SST Sensor Dual Module
- Code D44 Namur Sensor Dual Module
- Code I02 P+F NJ2-12GK-SN, 2 sensors
- Code I09 P+F; NCB2-12GM35-N0
- Code I32 Omron E2E-X2Y1, micro switch, 2 sensors
- Code I41 P+F, NJ4-12GK-SN, 2 sensors
- Code I45 P+F NJ3-13GK-S1N, 2 sensors
- Code I56 IFC 2002-ARKG/UP, 2 sensors
- Code K05 Omron D2VW-5, micro switch, 2 sensors
- Code K06 Omron D2VW-01 gold plated, micro switch
- Code B06 Omron D2VW-01 gold plated, micro switch, 2 sensors.  
(Bus powered, no external power and cabling needed).

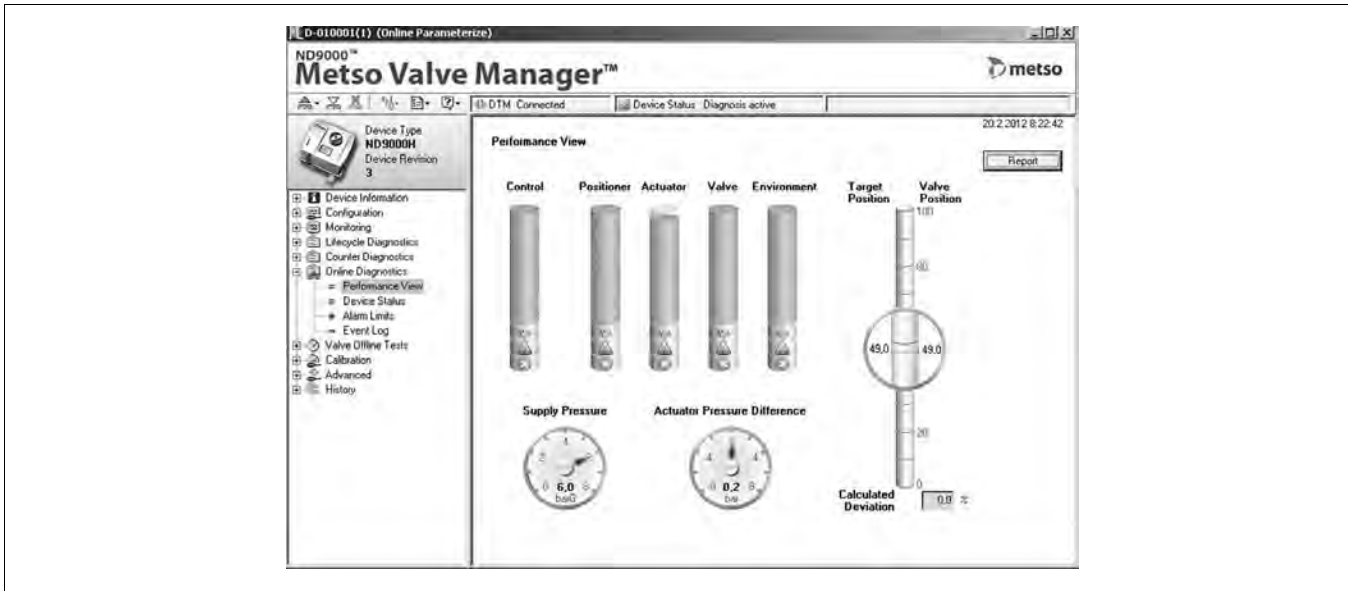


Figure 1. The Performance View of the Metso Valve Manager graphically displays indexes of the valve, actuator and positioner, as well as indexes of control performance and the application environment. Report will show explanations of the status of each component and guidelines for recommended actions.

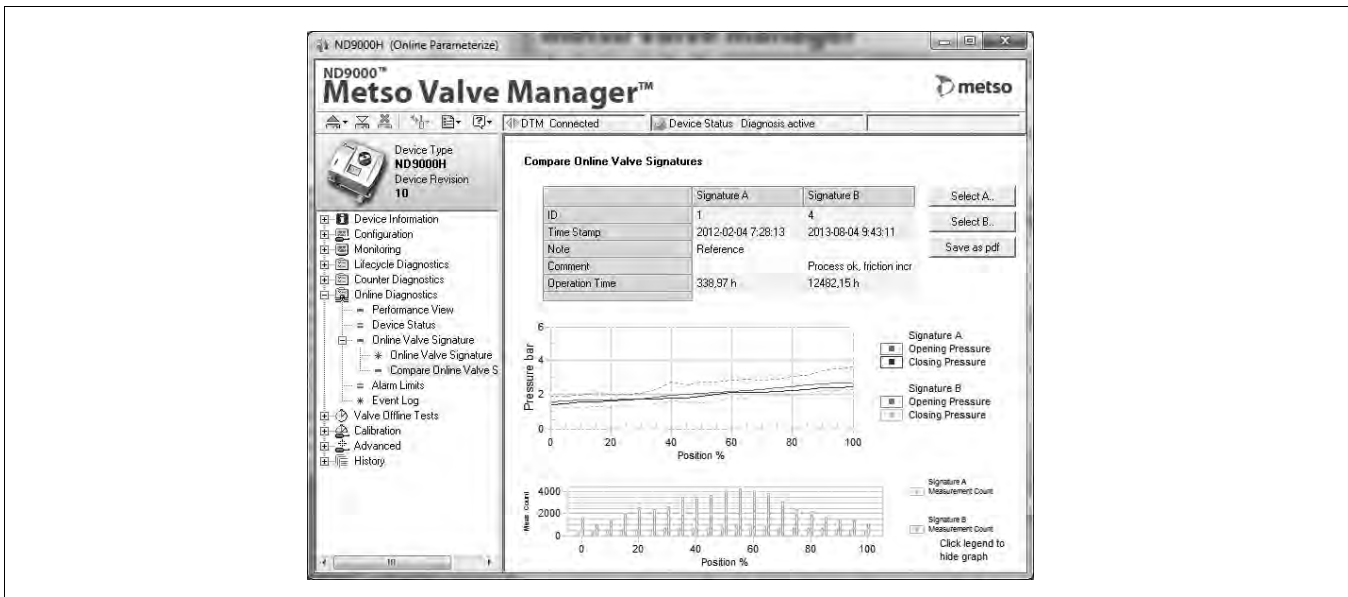
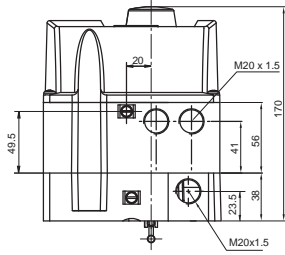


Figure 2. Valve Online Signature feature shows friction of the control valve online, under normal process conditions when ever the valve is changing position.

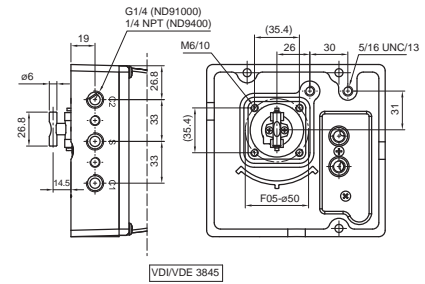
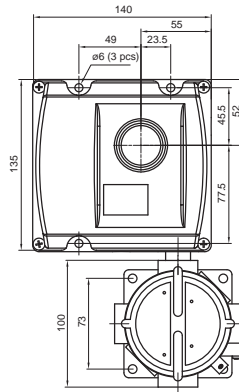
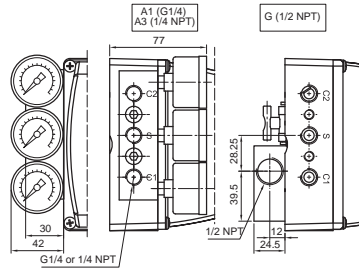
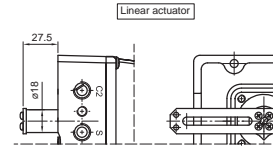
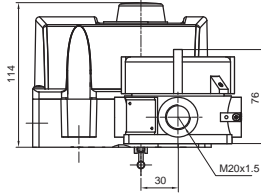
**DIMENSIONS**

**ND9100 and ND9400**

ND9100/I, ND9100/K and ND9100/B



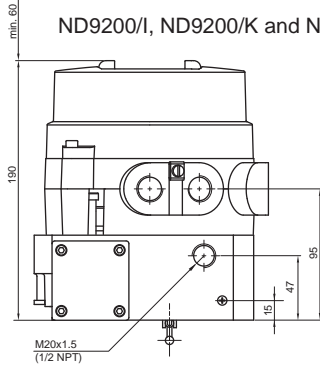
**ND9100**



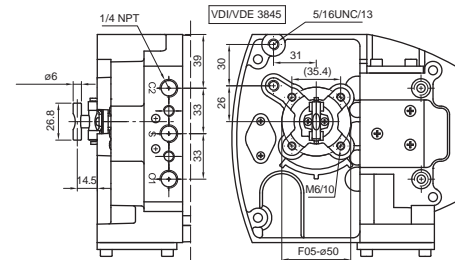
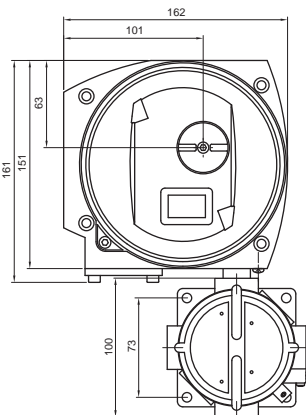
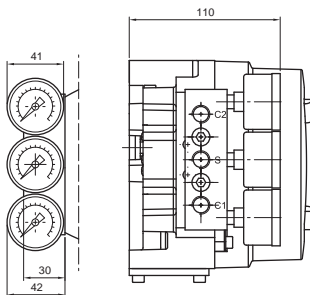
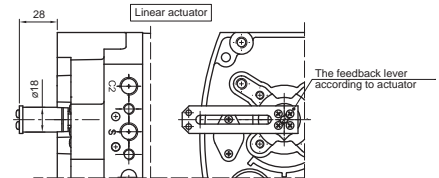
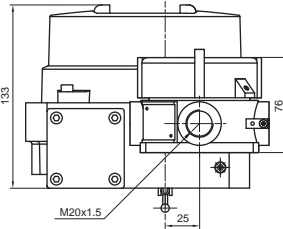
Option J

**ND9200**

ND9200/I, ND9200/K and ND9200/B

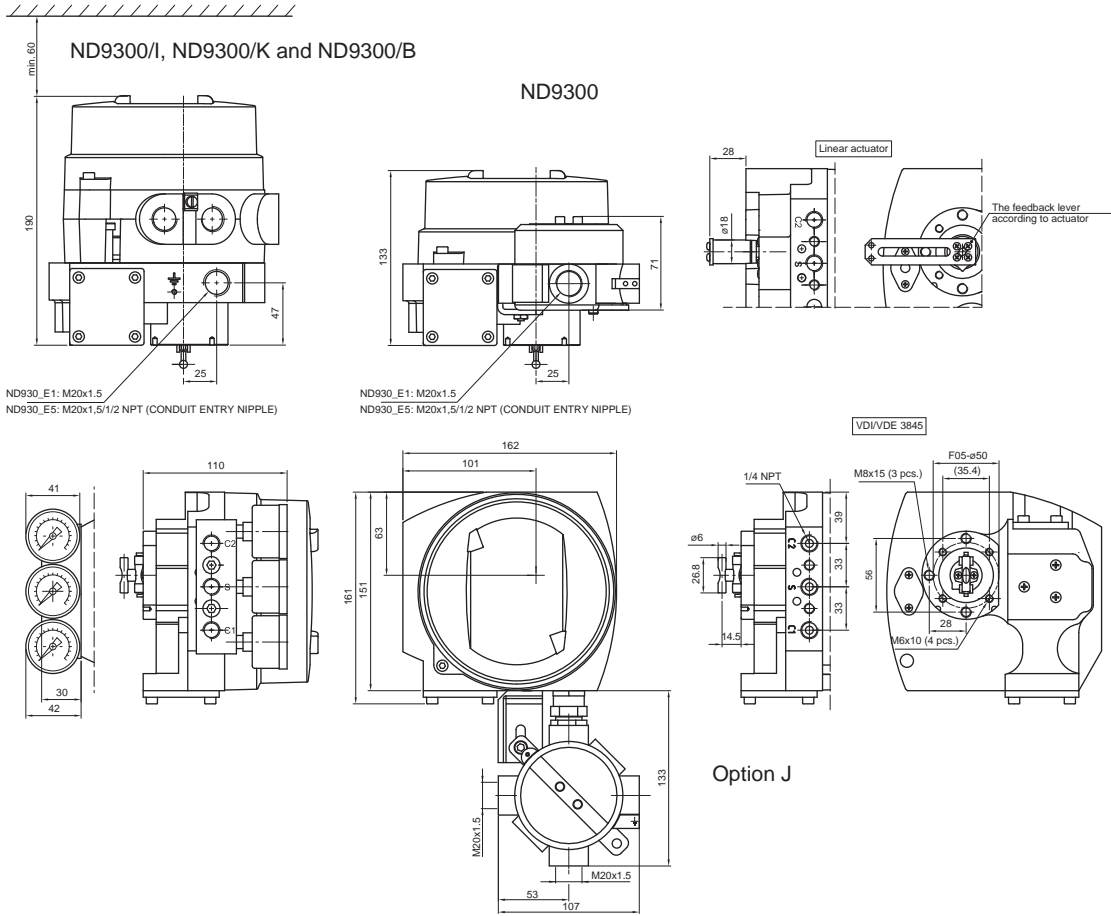


**ND9200**



Option J

**ND9300**





## HOW TO ORDER

**INTELLIGENT VALVE CONTROLLER ND9000 /  
LIMIT SWITCH (ND9000/D\_\_, ND9000/I\_\_, ND9000/K0\_ or ND9000/B06)**

1.	2.	3.	4.	5.	6.	7.		8.	9.
ND	9	2	03	H	E1	T	/	K05	

<b>1.</b>	<b>PRODUCT GROUP</b>	
ND	Intelligent Valve Controller.	
<b>2.</b>	<b>SERIES CODE</b>	
9	Series 9000 valve controller with universal shaft and attachment face according to standard VDI/VDE 3845. Relevant shaft adapter included in mounting kits. When valve controllers are separate deliveries, shaft adapter kit is supplied.	
<b>3.</b>	<b>ENCLOSURE</b>	
1	Standard IP66 / NEMA 4X enclosure.	
2	Flameproof (Ex d) IP66 / NEMA 4X enclosure.	
3	Stainless steel flameproof (Ex d) IP66 / NEMA 4X enclosure.	
4	Stainless steel IP66 / NEMA 4X enclosure, polymer composite cover	
<b>4.</b>	<b>SPOOL VALVE</b>	<b>PNEUMATIC CONNECTIONS (S, C1, C2)</b>
02	Low capacity. Stroke volume of actuator < 1 dm <sup>3</sup> .	G 1/4 (ND9100), 1/4 NPT (ND9200/ND9300/ND9400).
03	Medium capacity. Stroke volume of actuator 1–3 dm <sup>3</sup> .	G 1/4 (ND9100), 1/4 NPT (ND9200/ND9300/ND9400).
06	High capacity. Stroke volume of actuator > 3 dm <sup>3</sup> .	G 1/4 (ND9100), 1/4 NPT (ND9200/ND9300/ND9400).
<b>5.</b>	<b>COMMUNICATION / INPUT SIGNAL RANGE</b>	
H	4–20 mA, HART (6 and 7) communication. Supply voltage 30 V DC. Load voltage: up to 9.7 V DC at 20 mA corresponding to 485 Ω (maximum voltage drop).	
F	FOUNDATION fieldbus, physical layer according to IEC 61158-2.	
P	Profibus PA, physical layer according to IEC 61158-2.	
<b>6.</b>	<b>APPROVALS FOR HAZARDOUS AREAS</b>	
N	No approvals for hazardous areas. M20 x 1.5 conduit entry. Temperature range -40° to +85 °C. Not applicable to 3. sign "20".	
X	<p><b>ATEX and IECEx certifications:</b>            II 1 G Ex ia IIC T6...T4 Ga    II 2 G Ex ib IIC T6...T4 Gb            II 1 D Ex ta IIIC T90 °C Da    II 2 D Ex tb IIIC T90 °C Db            Temperature range: T4: -40° to +80 °C; T5: &lt; +65 °C; T6: &lt; +50 °C.</p> <p>II 3 G Ex nA IIC T6...T4 Gc    II 3 D Ex tc IIIC T90 °C Dc            Temperature range: T4: -40° to +85 °C; T5: &lt; +75 °C; T6: &lt; +60 °C.</p> <p>II 3 G Ex ic IIC T6...T4 Gc    II 3 D Ex tc IIIC T90 °C Dc            Ex ic IIC T6...T4            Temperature range: T4: -40° to +85 °C; T5: &lt; +75 °C; T6: &lt; +60 °C.</p> <p>Available without limit switches or with ATEX or IECEx certified inductive limit switches.            M20 x 1.5 conduit entry.            With limit switch temperature range is updated according to switch type.            NOTE:            Dust approval:            II 1 D Ex ta IIIC T90 °C Da            II 2 D Ex tb IIIC T90 °C Db            II 3 D Ex tc IIIC T90 °C Dc            not applicable to 3. sign "4".</p>	
U	<p><b>cCSAus certifications:</b>            IS Class I, Division 1, Groups A, B, C, D, T4...T6            IS Class I, Zone 0, AEx ia, IIC T4...T6            Temperature range: T4: -40° to +80 °C; T5: &lt; +65 °C; T6: &lt; +50 °C.</p> <p>NI Class I, Division 2, Groups A, B, C, D, T4...T6.            NI Class I, Zone 2, Ex nA IIC T4...T6.            Temperature range: T4: -40° to +85 °C; T5: &lt; +70 °C; T6: &lt; +55 °C.            No Zener Barrier needed.            Not applicable to 3. sign "2" or "4".            1/2 NPT conduit entry.            With limit switch temperature range is updated according to switch type.</p>	

<b>6.</b>	<b>APPROVALS OF STANDARD ENCLOSURE VALVE CONTROLLER</b>
Z	<p><b>INMETRO certifications:</b>            Ex ia IIC T4/T5/T6 Ga    Ex ia IIC T4/T5/T6            Ex ia IIC T4/T5/T6 Gb            Temperature range: T4: -40° to +80 °C; T5: &lt; +65 °C; T6: &lt; +50 °C.</p> <p>Ex nA IIC T4/T5/T6 Gc            Temperature range: T4: -40° to +85 °C; T5: &lt; +75 °C; T6: &lt; +60 °C.</p> <p>Ex ic IIC T4/T5/T6 Gc    Ex ic IIC T4/T5/T6            Temperature range: T4: -40° to +85 °C; T5: &lt; +75 °C; T6: &lt; +60 °C.</p> <p>Not applicable to 3. sign "2" or "4".            Available without limit switches or with IECEx certified inductive limit switches.            M20 x 1.5 conduit entry.            With limit switch temperature range is updated according to switch type.</p>
E1	<p><b>ATEX and IECEx certifications:</b>            II 2 G Ex d IIC T6...T4 Gb            II 2 D Ex tb IIIC T80 °C...T105 °C Db            Temperature range: T4: -40° to +85 °C; T5: &lt; +75 °C; T6: &lt; +60 °C.            Not applicable to 3. sign "1" or "4".            M20 x 1.5 conduit entry</p>
E2	<p><b>cCSAus certification:</b>            Class I, Div 1, Groups B, C, D; Class II, Div 1, Groups E, F, G; Class III; T4...T6, Enclosure type 4X            Ex d IIC T4...T6            AEx d IIC T4...T6            Ex tb IIIC T100 °C IP66            AEx tb IIIC T100 °C IP66            Temperature range: T4: -40° to +85 °C; T5: &lt; +75 °C; T6: &lt; +60 °C.            Not applicable to 3. sign "1" or "4".            1/2 NPT conduit entry.</p>
E4	<p><b>TIIS (JIS) certifications:</b>            Ex d II C T6            Temperature range: T6: -20° to +60 °C.            Applicable only to 3. sign "2".            Applicable only to 5. sign "H".            Not available with any limit switches (8. sign "I" or "K").            G 1/2 or 1/2 NPT conduit entry.            Delivered always with TIIS (JIS) approved cable gland and conduit entry nipple (accessory CG42 or CG41), see type code from Accessories for Positioners item 10:  <b>CG42:</b> G 1/2 Conduit entry and Cable entry adapter.  <b>CG41:</b> 1/2 NPT Conduit entry and Cable entry adapter.</p>
E5	<p><b>INMETRO certification:</b>            Ex d IIC T4/T5/T6 Gb            Ex tb IIIC T100 °C Db IP66            Temperature range: T4: -40° to +85 °C; T5: &lt; +75 °C; T6: &lt; +60 °C.            Not applicable to 3. sign "1" or "4".            M20 x 1.5 conduit entry.</p>

7.	OPTIONS OF VALVE CONTROLLER
T	<p>Internal 2-wire (passive) position transmitter. Analog position feedback signal, output 4–20 mA, supply voltage 12–30 V DC, external load resistance 0–780 Ω.</p> <p><b>ND91_HXT, ND91_HZT, ND92_HXT, ND93_HXT, ND93_HZT, ND94_HXT:</b>                      II 1 G Ex ia IIC T6...T4 Ga                      II 1 D Ex ta IIIC T90 °C Da                      II 2 G Ex ib IIC T6...T4 Gb                      II 2 D Ex tb IIIC T90 °C Db                      U<sub>i</sub> ≤ 28 V, I<sub>i</sub> ≤ 120 mA, P<sub>i</sub> ≤ 1 W, C<sub>i</sub> ≤ 22 nF, L<sub>i</sub> ≤ 53 μH, external load resistance 0–690 Ω.</p> <p><b>ND91_HXT, ND91_HZT, ND92_HXT, ND93_HXT, ND93_HZT, ND94_HXT:</b>                      II 3 G Ex nA IIC T6...T4 Gc                      II 3 D Ex tc IIIC T90 °C Dc                      U<sub>i</sub> ≤ 30 V, I<sub>i</sub> ≤ 152 mA                      II 3 G Ex ic IIC T6...T4 Gc                      II 3 D Ex tc IIIC T90 °C Dc                      U<sub>i</sub> ≤ 30 V, I<sub>i</sub> ≤ 152 mA, P<sub>max</sub> = device limits itself, C<sub>i</sub> ≤ 22 nF, L<sub>i</sub> ≤ 53 μH, external load resistance 0–780 Ω.</p> <p><b>ND91_HU1T and ND93_HU1T:</b>                      U<sub>i</sub> ≤ 28 V, I<sub>i</sub> ≤ 120 mA, P<sub>i</sub> ≤ 1 W, C<sub>i</sub> ≤ 22 nF, L<sub>i</sub> ≤ 53 μH, external load resistance 0–690 Ω.</p> <p><b>ND91_HU2T and ND93_HU2T:</b>                      U<sub>i</sub> ≤ 30 V, P<sub>max</sub> = device limits itself, C<sub>i</sub> ≤ 22 nF, L<sub>i</sub> ≤ 53 μH, external load resistance 0–780 Ω.</p> <p><b>ND92_HE1T, ND92_HE2T, ND92_HE4T, ND92_HE5T, ND93_HE1T, ND93_HE5T:</b>                      U<sub>i</sub> ≤ 30 V, P<sub>max</sub> = device limits itself, external load resistance 0–780 Ω.                      Applicable to 5. sign "H".</p>
R	<p>Remote mounting                      Applicable only to 3. sign "1"                      Applicable only to 6. sign "N"                      Requires always external position measurement. For rotary actuator see accessories type code.</p> <p>NOTE Dust approval:                      II 1 D Ex ta IIIC T90 °C Da                      II 2 D Ex tb IIIC T90 °C Db                      II 3 D Ex tc IIIC T90 °C Dc                      Not applicable to 6. sign "X"</p>
C	<p>Arctic temperature option.                      Temperature range -53 – +85 °C / -64 – +185 °F                      Applicable to 3. sign "2 or 3"                      Applicable to 6. sign "X" or "E1"                      Note, Limit switch may limit the temperature range</p>
J	<p><b>ND91_H, ND94_H, ND92_H and ND93_H:</b>                      External junction box for all 4–20 mA wirings, including position transmitter, if applicable. Junction box is connected to the enclosure, 2 pcs. M20 x 1.5 conduit entry.</p> <p><b>ND91_F, ND92_F, ND94_F, ND93_F, ND91_P, ND92_P, ND94_P and ND93_P:</b>                      External junction box for wirings, including option for parallel connection of external surge protector.                      Junction box is connected to the enclosure, 2 pcs. M20 x 1.5 conduit entry.                      Applicable to 6. sign "N", "X", "Z". "E1" pending.</p>
G	<p>Exhaust adapter. ND9100 and ND9400: 1x 1/2 NPT thread, ND9200 and ND9300: 2 x 1/2 NPT thread.</p>
Y	<p>Special construction.</p>

8.	LIMIT SWITCH TYPE
	<p><b>Inductive proximity switches, 2 pcs.</b>                      IP66 / NEMA 4X enclosure. M20 x 1.5 conduit entry (2 pcs.).                      Option E2: 1/2 NPT conduit entry (2 pcs.).                      Limit switches applicable only with ND9100, ND9200 and ND9300.</p>
D33	<p>Metso; SST Sensor Dual Module, 6–29 V DC / 24–125 V AC                      Temperature range -40° to +82 °C / -40° to +179 °F.                      Applicable to 6. sign "N", "E1", "E2" and "E5".</p>
D44	<p>Metso; Namur Sensor Dual Module, &gt; 3 mA; &lt; 1 mA.                      Temperature range -40° to +82 °C / -40° to +179 °F.                      Applicable to 6. sign "N", "U", "E1", "E2" and "E5".</p>
I02	<p>P+F; NJ2-12GK-SN, 2-wire type, DC; &gt; 3 mA; &lt; 1 mA, NAMUR NC.                      Temperature range: -40° to +85 °C / -40° to +185 °F.                      Not applicable to 6. sign "E4".</p>
I09	<p>P+F; NCB2-12GM35-N0, 2-wire type, DC; &gt; 3 mA; &lt; 1 mA, NAMUR NC                      Temperature range: -25° to +85 °C / -13° to +185 °F.                      Not applicable to 6. sign "E4"                      Usable up to SIL2 acc. to IEC61508.</p>
I32	<p>Omron E2E-X2Y1, 2-wire type; AC; &lt;100 mA; 24–240 V AC.                      Temperature range: -40° to +85 °C / -40° to +185 °F.                      Applicable to 6. sign "N".                      Temperature range: -25° to +75 °C / -13° to +167 °F.                      Applicable to 6. sign "E1", "E2" and "E5".</p>
I41	<p>P+F; NJ4-12GK-SN, 2-wire, DC; &gt; 3 mA; &lt; 1 mA, NAMUR NC                      Temperature range -50 ... +85 °C / -58 ... 185 °F)                      Applicable to 6. sign "N", "X" and "E1"                      Note that device may limit temperature range.</p>
I45	<p>P+F; NJ3-18GK-S1N, 3-wire type, DC; &gt; 3 mA; &lt; 1 mA, NAMUR NO.                      Temperature range: -25° to +85 °C / -13° to +185 °F.                      Not applicable to 6. sign "E4".                      Usable up to SIL3 acc. to IEC61508</p>
I56	<p>ifm; IFC2002-ARKG/UP, 2-wire type, DC; 150 mA, 10–36 V DC,                      leakage current &lt; 0.6 mA.                      Temperature range: -20° to +85 °C / -4° to +185 °F.                      Not applicable to 6. sign "X", "Z", "U", "E2" and "E4".</p>
	<p><b>Mechanical micro switches, 2 pcs.</b>                      IP66 / NEMA 4X enclosure.                      M20 x 1.5 conduit entry (2 pcs.).                      Option E2: 1/2 NPT conduit entry (2 pcs.).                      Limit switches applicable only with ND9100, ND9200 and ND9300</p>
K05	<p>Omron D2VW-5, 3 A - 250 V AC, 0.4 A - 125 V DC, 5 A - 30 V DC.                      Temperature range: -40° to +85 °C / -40° to +185 °F.                      Not applicable to 6. sign "X", "Z", "U" and "E4".</p>
K06	<p>Omron D2VW-01, gold plated contacts, 100 mA - 30 V DC / 125 V AC.                      Temperature range: -40° to +85 °C / -40° to +185 °F.                      Not applicable to 6. sign "X", "Z", "U" and "E4".</p>
	<p><b>Bus powered mechanical micro switches, 2 pcs.</b>                      Applicable to ND9000F and ND9000P only.                      IP66 / NEMA 4X enclosure. M20 x 1.5 conduit entry (2 pcs.).                      Option E2: 1/2 NPT conduit entry (2 pcs.).</p>
B06	<p>Omron D2VW-01, gold plated contacts; Bus Powered,                      no external power needed.                      Temperature range: -40° to +85 °C / -40° to +185 °F.                      Not applicable to 5. sign "H".                      Not applicable to 6. sign "U" and "E4".</p>

9.	OPTIONS OF LIMIT SWITCH
Y	<p>Special construction.</p>