

# Air Slide Table

## Series MXQ

ø6, ø8, ø12, ø16, ø20, ø25

**Integration of the guide rail and the table.**  
**Uses a recirculating linear guide for high rigidity and high precision.**  
**Air slide table for precision assembly processes.**

### High precision, compact design

Comparison of MXQ and MXS (mm)

Model	Repeatability		Dimensions		
	Parallelism	Height tolerance	Width	Height	Overall length
MXQ12-30	0.035	±0.08	46	30	86
MXS12-30	0.2	±0.2	50	32	80

### Improved load resistance

Load resistance against sudden and excessive external forces is nearly three times greater than Series MXS.

### Symmetric type is also standardized.

Available for all option

#### Wide variety of adjuster option

#### Positioning hole

Improved workpiece mounting repeatability

#### Workpiece mounting taps

#### Improved strength

End plate uses extra super duralumin. (Except the one with buffer)

#### Dual rods

Twice the output of conventional cylinders

#### Recirculating linear guide

Wide type linear guide block body made of martensitic stainless steel

#### Body mounting through-hole

#### Auto switch mounting groove

Auto switches can be mounted in grooves provided on the side of the body where they do not protrude.

#### Integrating table with guide rail

Made of martensitic stainless steel

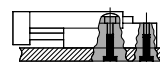
#### Positioning hole

Reproducibility for mounting on the body has been improved.

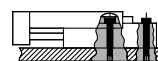
#### Body mounting taps

Mounting is possible from 3 directions.

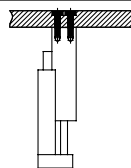
#### 1. Lateral mounting (Body tapped)



#### 2. Lateral mounting (Body through-hole)



#### 3. Vertical mounting (Body tapped)



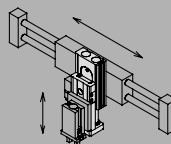
### Wide Variety of Option

Adjuster option and function option can be combined

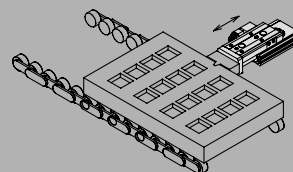
Symmetric type	Adjuster option	Functional option
	With stroke adjuster 	With buffer mechanism 
	With shock absorber 	With end lock 
		Axial piping type 

### Application Example

As Z-axis for picking and placing



For positioning of pallets on a conveyor



MXH

MXU

MXS

**MXQ**

MXF

MXW

MXJ

MXP

MXY

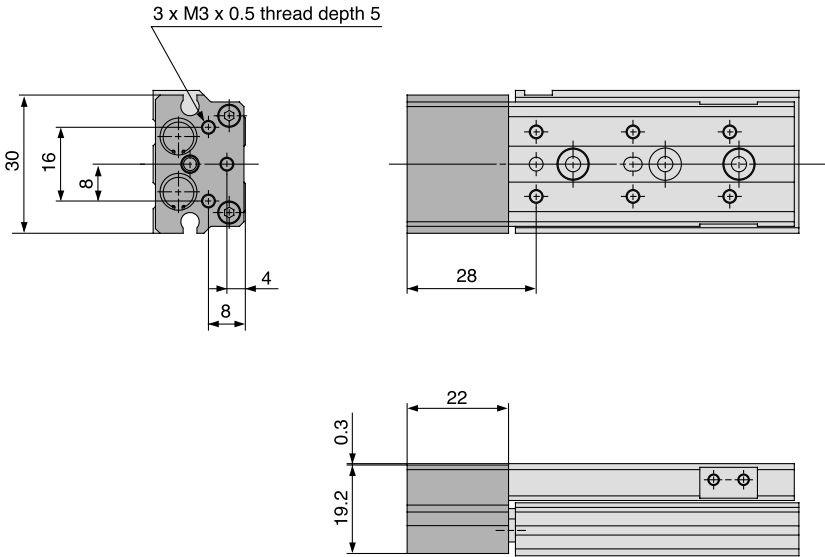
MTS

D-□

-X□

Individual  
-X□

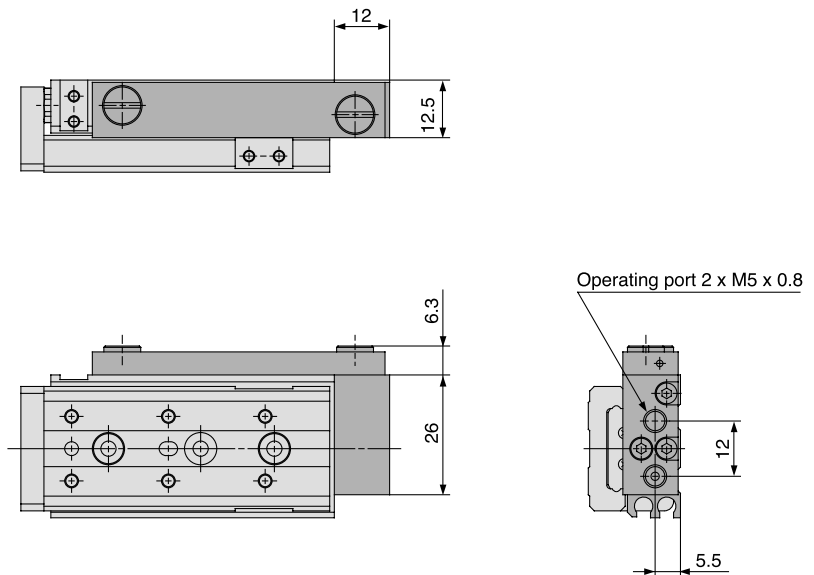
With buffer (ø6): MXQ6-□□F



<b>MXH</b>
<b>MXU</b>
<b>MXS</b>
<b>MXQ</b>
<b>MXF</b>
<b>MXW</b>
<b>MXJ</b>
<b>MXP</b>
<b>MXY</b>
<b>MTS</b>

\* Other dimensions are the same as basic style.

Axial piping type (ø6): MXQ6-□□P



<b>D-□</b>
<b>-X□</b>
Individual <b>-X□</b>

\* Other dimensions are the same as basic style.

