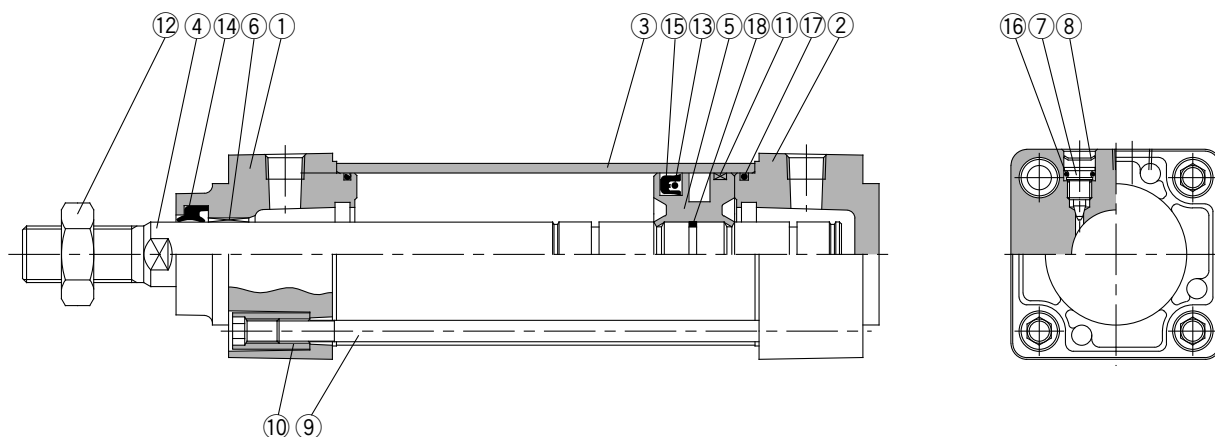




## Construction



### Component Parts

No.	Description	Material	Note
①	Rod cover	Aluminum die-cast	Metallic painted
②	Head cover	Aluminum die-cast	Metallic painted
③	Cylinder tube	Aluminum alloy	Hard anodized
④	Piston rod	Carbon steel	Hard chrome plated
⑤	Piston	Aluminum alloy	Chromated
⑥	Bushing	Lead bronze cast	
⑦	Cushion valve	Steel wire	Nickel plated
⑧	Retaining ring	Steel for spring	ø40 to ø100
⑨	Tie rod	Carbon steel	Zinc chromated
⑩	Tie rod nut	Carbon steel	Nickel plated
⑪	Wear ring	Resin	
⑫	Rod end nut	Carbon steel	Nickel plated
⑬*	Back up O ring	NBR	
⑭*	Rod seal	NBR	
⑮*	Piston seal	NBR	
⑯	Cushion valve seal	NBR	
⑰*	Cylinder tube gasket	NBR	
⑱	Piston gasket	NBR	

### Replacement Parts/Seal Kit

Bore (mm)	Kit no.	Contents
32	MBQ32-PS	Set of the No. ⑬, ⑭, ⑮ and ⑰
40	MBQ40-PS	
50	MBQ50-PS	
63	MBQ63-PS	
80	MBQ80-PS	
100	MBQ100-PS	

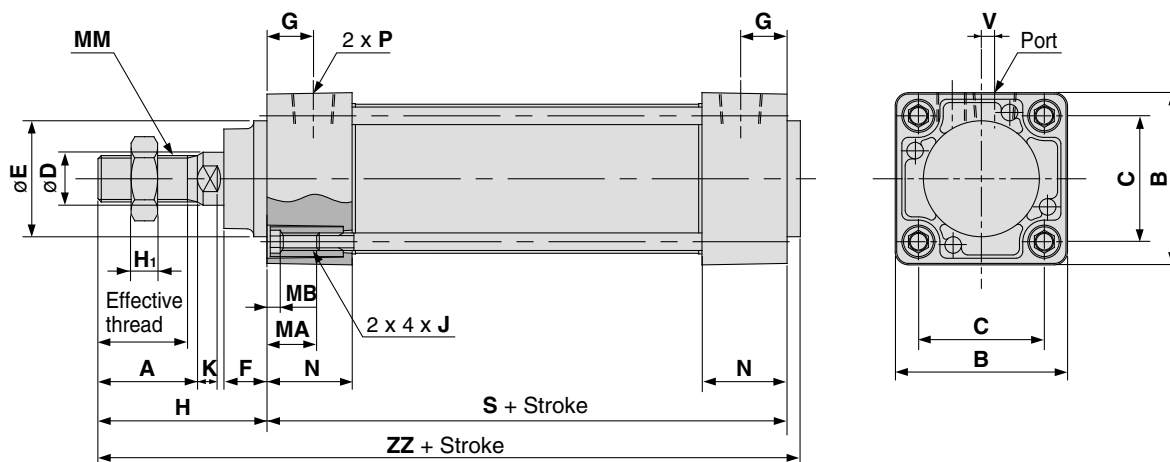
\* Seal kits consist of items ⑬, ⑭, ⑮ and ⑰, and can be ordered by using the seal kit number corresponding to each bore size.

\* Trunnion type should not be disassembled. (Refer to page 328.)

\* Since the seal kit does not include a grease pack, order it separately.

**Grease pack part number: GR-L-020 (20 g)**

**Basic: (B)**



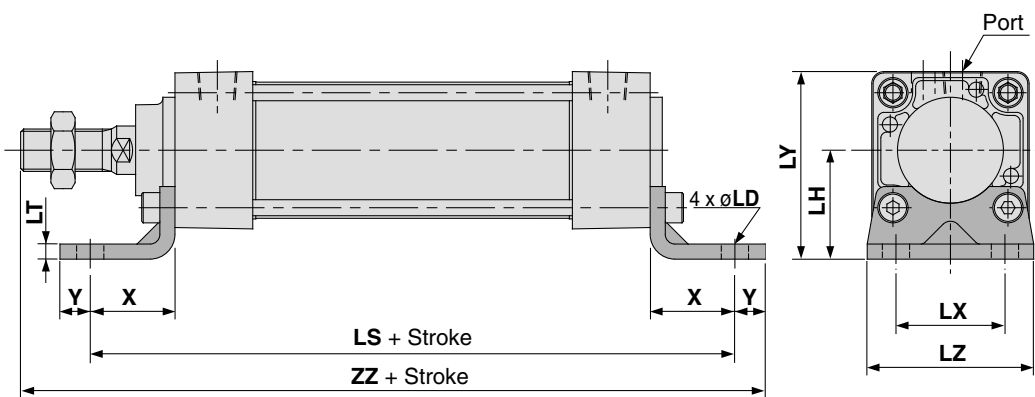
- CJ1**
- CJP**
- CJ2**
- CM2**
- CG1**
- MB**
- MB1**
- CA2**
- CS1**
- CS2**

Bore (mm)	Stroke range	Effective thread length	Width across flats	A	B	C	D	Ee11	F	G	H <sub>1</sub>	H	MA	MB	J	K	MM	N	P	S	V	ZZ
32	up to 500	19.5	10	22	46	32.5	12	30	13	13	6	47	16	4	M6 x 1	6	M10 x 1.25	27	1/8	84	4	135
40	up to 500	27	14	30	52	38	16	35	13	14	8	51	16	4	M6 x 1	6	M14 x 1.5	27	1/4	84	4	139
50	up to 600	32	18	35	65	46.5	20	40	14	15.5	11	58	16	5	M8 x 1.25	7	M18 x 1.5	31.5	1/4	94	5	156
63	up to 600	32	18	35	75	56.5	20	45	14	16.5	11	58	16	5	M8 x 1.25	7	M18 x 1.5	31.5	3/8	94	9	156
80	up to 800	37	22	40	95	72	25	45	20	19	13	72	16	5	M10 x 1.5	10	M22 x 1.5	38	3/8	114	11.5	190
100	up to 800	37	26	40	114	89	30	55	20	19	16	72	16	5	M10 x 1.5	10	M26 x 1.5	38	1/2	114	17	190

**With Mounting Bracket**

\* Refer to basic mounting (B) for other dimensions and with rod boot.

**Foot: (L)**



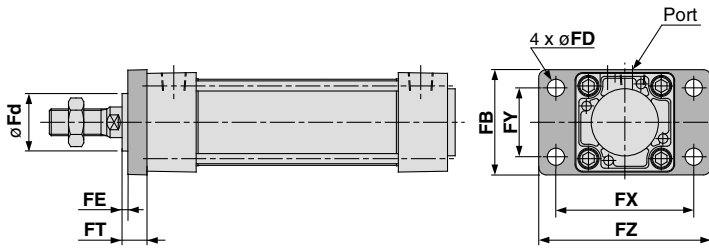
Bore size (mm)	Stroke range	X	Y	LD	LH	LS	LT	LX	LY	LZ	ZZ
32	to 700	22	9	7	30	128	3.2	32	53	50	162
40	to 800	24	11	9	33	132	3.2	38	59	55	170
50	to 1000	27	11	9	40	148	3.2	46	72.5	70	190
63	to 1000	27	14	12	45	148	3.6	56	82.5	80	193
80	to 1000	30	14	12	55	174	4.5	72	102.5	100	230
100	to 1000	32	16	14	65	178	4.5	89	122	120	234

- D-□**
- X□**
- Individual
- X□**
- Technical data

# Series MB□Q

## With Mounting Bracket

### Front flange: (F)

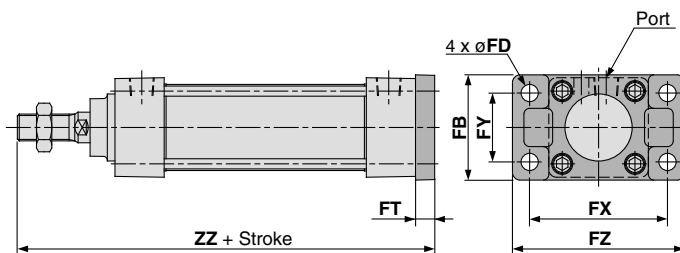


Front Flange

(mm)

Bore size (mm)	Stroke range	B	FD	FE	FT	FX	FY	FZ	Fd
32	to 700	50	7	3	10	64	32	79	25
40	to 800	55	9	3	10	72	36	90	31
50	to 1000	70	9	2	12	90	45	110	38.5
63	to 1000	80	9	2	12	100	50	120	39.5
80	to 1000	100	12	4	16	126	63	153	45
100	to 1000	120	14	4	16	150	75	178	54

### Rear flange: (G)

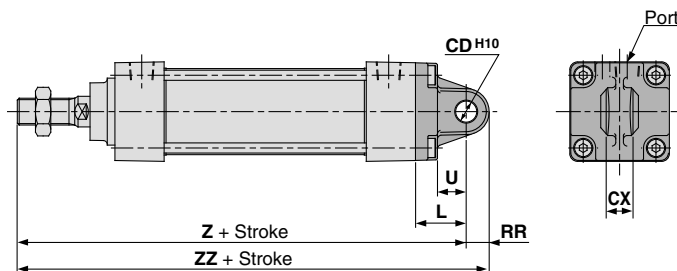


Rear Flange

(mm)

Bore size (mm)	Stroke range	B	FD	FT	FX	FY	FZ	ZZ
32	to 500	50	7	10	64	32	79	141
40	to 500	55	9	10	72	36	90	145
50	to 600	70	9	12	90	45	110	164
63	to 600	80	9	12	100	50	120	164
80	to 750	100	12	16	126	63	153	202
100	to 750	120	14	16	150	75	178	202

### Single clevis: (C)

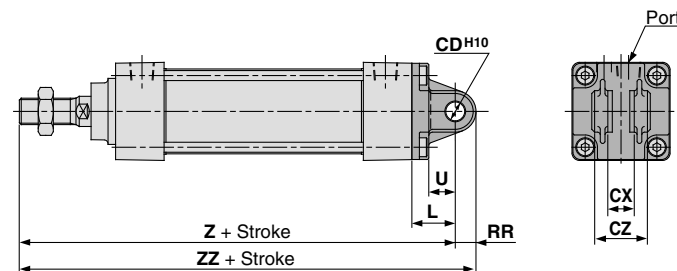


Single Clevis

(mm)

Bore size (mm)	Stroke range	L	RR	U	CD <sup>H10</sup>	CX <sup>-0.1/-0.3</sup>	Z	ZZ
32	to 500	23	10.5	13	10	14	154	164.5
40	to 500	23	11	13	10	14	158	169
50	to 600	30	15	17	14	20	182	197
63	to 600	30	15	17	14	20	182	197
80	to 750	42	23	26	22	30	228	251
100	to 750	42	23	26	22	30	228	251

### Double clevis: (D)

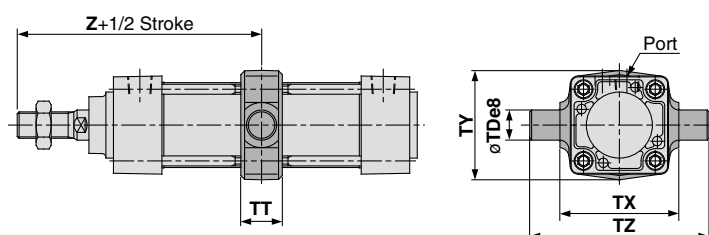


Double Clevis

(mm)

Bore size (mm)	Stroke range	L	RR	U	CD <sup>H10</sup>	CX <sup>-0.3/-0.1</sup>	CZ	Z	ZZ
32	to 500	23	10.5	13	10	14	28	154	164.5
40	to 500	23	11	13	10	14	28	158	169
50	to 600	30	15	17	14	20	40	182	197
63	to 600	30	15	17	14	20	40	182	197
80	to 750	42	23	26	22	30	60	228	251
100	to 750	42	23	26	22	30	60	228	251

### Center trunnion: (T)



Center Trunnion

(mm)

Bore size (mm)	Stroke range	TDe <sub>8</sub>	TT	TX	TY	TZ	Z
32	to 500	12	17	50	49	74	89
40	to 500	16	22	63	58	95	93
50	to 600	16	22	75	71	107	105
63	to 600	20	28	90	87	130	105
80	to 750	20	34	110	110	150	129
100	to 750	25	40	132	136	182	129