

# Assembly instructions

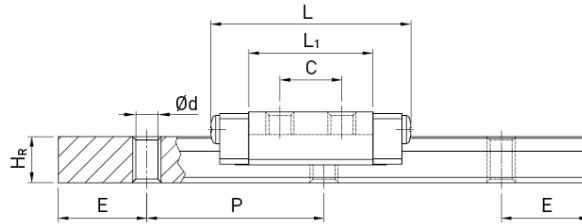
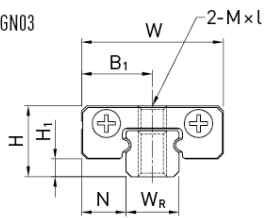
Linear guideway

GW-05-06-EN-2302-MA

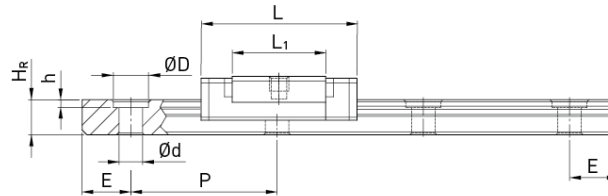
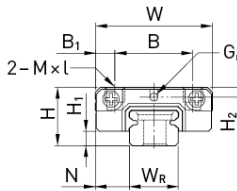
### 12.3.5 Dimensions of the MG blocks

#### MGN

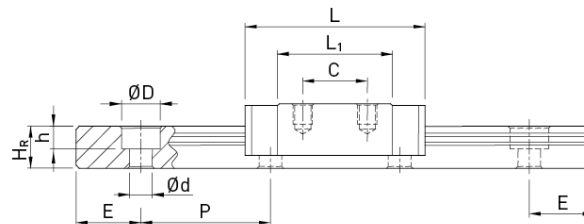
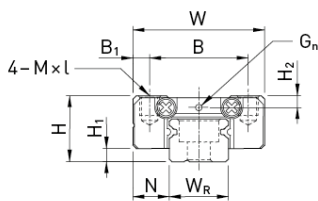
MGN02, MGN03



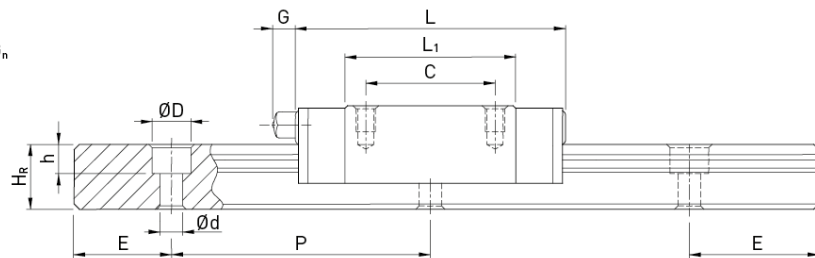
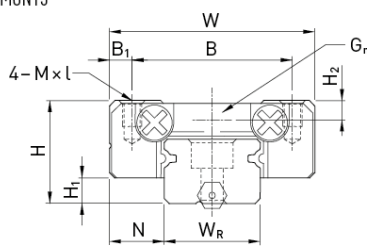
MGN05



MGN07, MGN09, MGN12



MGN15



#### Dimensions of the block

Series/ Size	Installation dimensions [mm]			Dimensions of the block [mm]										Load ratings [N]		Weight (kg)
	H	H <sub>1</sub>	N	W	B	B <sub>1</sub>	C	L <sub>1</sub>	L	G	G <sub>n</sub>	M × l	H <sub>2</sub>	C <sub>dyn</sub>	C <sub>0</sub>	
MGN02C	3.2	0.7	2.0	6	-	3	4.0	9.4	12.5	-	-	M1,4	-	220	400	0.001
MGN03C	4.0	1.0	2.5	8	-	4	3.5	7.0	11.3	-	-	M1,6	-	290	440	0.001
MGN03H							5.5	11.0	15.3			M2		390	680	0.002
MGN05C	6.0	1.5	3.5	12	8	2.0	-	9.6	16.0	-	Ø 0.8	M2 × 1.5	1.0	540	840	0.008
MGN05H							-	12.6	19.0	-				670	1,080	0.010
MGN07C	8.0	1.5	5.0	17	12	2.5	8	13.5	22.5	-	Ø 1.2	M2 × 2.5	1.5	980	1,245	0.010
MGN07H							13	21.8	30.8					1,372	1,960	0.020
MGN09C	10.0	2.0	5.5	20	15	2.5	10	18.9	28.9	-	Ø 1.4	M3 × 3	1.8	1,860	2,550	0.020
MGN09H							16	29.9	39.9					2,550	4,020	0.030
MGN12C	13.0	3.0	7.5	27	20	3.5	15	21.7	34.7	-	Ø 2	M3 × 3.5	2.5	2,840	3,920	0.030
MGN12H							20	32.4	45.4					3,720	5,880	0.050
MGN15C	16.0	4.0	8.5	32	25	3.5	20	26.7	42.1	4.5	M3	M3 × 4	3.0	4,610	5,590	0.060
MGN15H							25	43.4	58.8					6,370	9,110	0.090

The size MG02 and MG03 blocks are only available mounted on the profile rail.