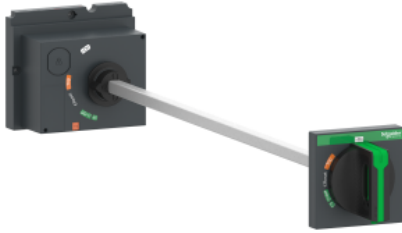


Product data sheet

Specifications



extended rotary handle, ComPacT NSX 100/160/250, black handle, shaft length 185 to 600 mm, IP55

LV429338T

Main

Range of product	ComPacT NSX100...250 new generation
Product or component type	Rotary handle
Accessory / separate part type	Control accessories
Handle front plate colour	Black
Rotary handle padlocking	Padlock in OFF position 1 to 3 padlocks
Rotary handle mounting location	Front

Complementary

Range compatibility	ComPacT NSX100 new generation ComPacT NSX160 new generation ComPacT NSX250 new generation EasyPact CVS100 EasyPact CVS160 EasyPact CVS250 PowerPact Multistandard
Handle colour	Black
Rotary handle mounting style	Extended
IP degree of protection	IP55

Packing Units

Unit Type of Package 1	PCE
Number of Units in Package 1	1
Package 1 Weight	687 g
Package 1 Height	9.8 cm
Package 1 width	10.3 cm
Package 1 Length	48.5 cm
Unit Type of Package 2	S04
Number of Units in Package 2	6
Package 2 Weight	4.822 kg
Package 2 Height	30 cm
Package 2 width	40 cm
Package 2 Length	60 cm

Package 3 Height	150 cm
-------------------------	--------

Offer Sustainability

REACH Regulation	REACH Declaration
-------------------------	-----------------------------------

REACH free of SVHC	Yes
---------------------------	-----

EU RoHS Directive	Compliant EU RoHS Declaration
--------------------------	--

Mercury free	Yes
---------------------	-----

RoHS exemption information	Yes
-----------------------------------	---------------------

China RoHS Regulation	China RoHS declaration Product out of China RoHS scope. Substance declaration for your information
------------------------------	---

California proposition 65	WARNING: This product can expose you to chemicals including: Lead and lead compounds, which is known to the State of California to cause cancer and birth defects or other reproductive harm. For more information go to www.P65Warnings.ca.gov
----------------------------------	---
