

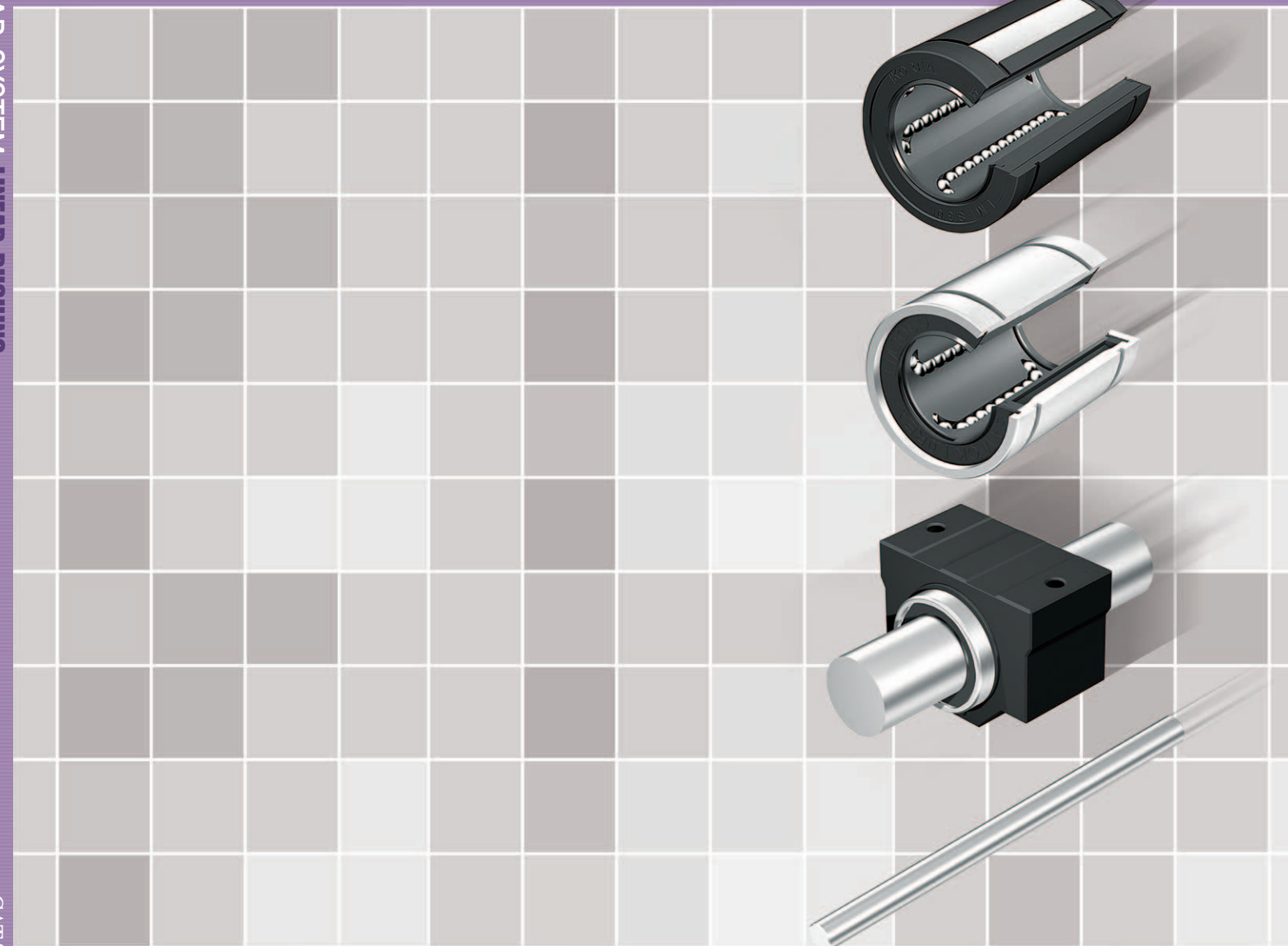


THE PRINCIPLE OF LINEAR SYSTEM **LINEAR BUSHING**

THE PRINCIPLE OF LINEAR SYSTEM

LINEAR BUSHING

by SAMICK the Linear Instinct

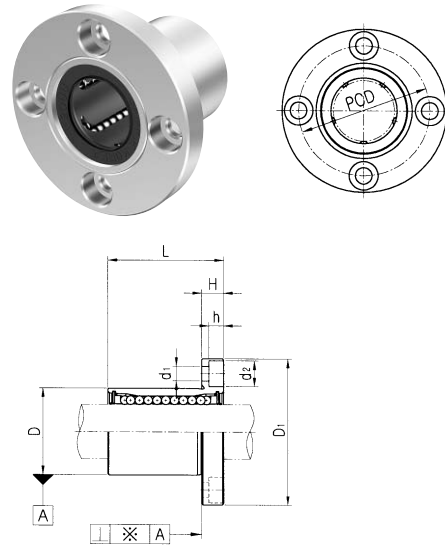


CATALOG NO. 1201E

● Published by | SAMICK Precision Ind. Co., Ltd.
925-2, Wulam-Dong, Dalseo-Gu, Daegu, 704-833, Korea (South)
TEL : (053) 666-7100 FAX : (053) 583-4669
Web site : www.samickco.co.kr
E-mail : marketing@samickco.co.kr

CATALOG NO. 1201E

LMF FLANGED LINEAR BUSHING



Samick Circular Flanged Linear Bushing	LMF	20	UU	-	A	N	S
Nominal Shaft Diameter							
Seal		Blank : No Seal U : One Side Seal UU : Both Side Seal					
Retainer		Blank : Resin retainer(Standard) A : Steel retainer(High temperature)					
Outer-sleeves (by corrosion resistance type)		Blank : No-plating(Standard) N : Electroless nickel plating R : Raydent treatment					
Ball type (by corrosion resistance)		Blank : High carbon bearing steel ball (standard) S : Stainless steel ball					

PART NUMBER	WORKING BORE DIAMETER	D		L	D ₁	H	PCD	d ₁	d ₂	h	SQUARENESS μm	BASIC LOAD RATING(N)		NO. OF BALLS	WEIGHT (gf)				
		dr.	CLEARANCE									mm	CLEARANCE			mm	CLEARANCE	mm	mm
LMF 6	LMF6-A	6		12		19		28		5	20	3.4	6.5	3.3	12	200	260	4	26.5
LMF 8S		8		15	⁰ / _{-0.011}	17		32		5	24	3.4	6.5	3.3	12	170	220	4	34
LMF 8	LMF8-A	8		15		24		32		5	24	3.4	6.5	3.3	12	260	400	4	40
LMF 10	LMF10-A	10	⁰ / _{-0.009}	19		29		40		6	29	4.5	8.0	4.4	12	370	540	4	78
LMF 12	LMF12-A	12		21	⁰ / _{-0.013}	30	⁰ / _{-0.2}	42		6	32	4.5	8.0	4.4	12	410	590	4	76
LMF 13	LMF13-A	13		23	⁰ / _{-0.013}	32	⁰ / _{-0.2}	43		6	33	4.5	8.0	4.4	12	500	770	4	94
LMF 16	LMF16-A	16		28		37		48		6	38	4.5	8.0	4.4	12	770	1170	5	134
LMF 20	LMF20-A	20		32		42		54		8	43	5.5	9.5	5.4	15	860	1370	5	180
LMF 25	LMF25-A	25	⁰ / _{-0.010}	40	⁰ / _{-0.016}	59		62		8	51	5.5	9.5	5.4	15	980	1560	6	340
LMF 30		30		45		64		74		10	60	6.6	11.0	6.5	15	1560	2740	6	460
LMF 35		35		52		70		82		10	67	6.6	11.0	6.5	20	1660	3130	6	795
LMF 40		40	⁰ / _{-0.012}	60	⁰ / _{-0.019}	80	⁰ / _{-0.3}	96		13	78	9.0	14.0	8.6	20	2150	4010	6	1054
LMF 50		50		80		100		116		13	98	9.0	14.0	8.6	20	3820	7930	6	2200
LMF 60		60	⁰ / _{-0.015}	90	⁰ / _{-0.022}	110	⁰ / _{-0.3}	134		18	112	11.0	17.5	10.8	25	4700	9990	6	2960
LMF 80		80		120		140		164		18	142	11.0	17.5	11.1	25	10130	12000	6	5400

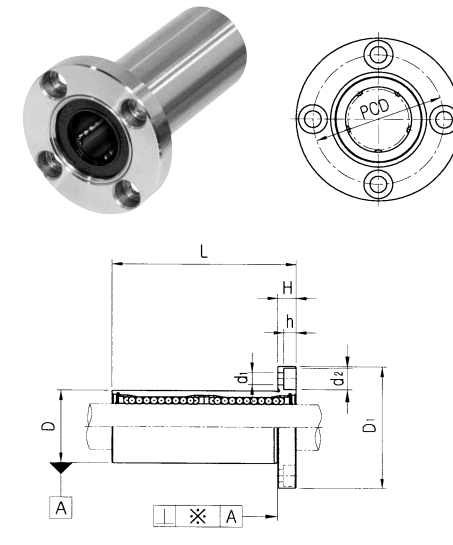
Note 1) Dynamic load rating is based on the nominal life of 50km.
In case of 100km, C on the table need to be divided by 1,26
Ex) LM12's 50km basis dynamic load rating C = 410N
LM12's 100km basis dynamic load rating C₁₀₀ = 410 / 1,26 = 325,40N

Note 2) Based on the weight of resin retainer

Note 3) Dimension : mm

Note 4) 1N ≒ 0.102kgf

LMF_L FLANGED LINEAR BUSHING LONG



Samick Circular Flanged Linear Bushing	LMF	20	L	UU	-	A	N	S
Nominal Shaft Diameter								
Linear Bushing Long type (for high load)								
Seal		Blank : No Seal U : One Side Seal UU : Both Side Seal						
Retainer		Blank : Resin retainer(Standard) A : Steel retainer(High temperature)						
Outer-sleeves (by corrosion resistance type)		Blank : No-plating(Standard) N : Electroless nickel plating R : Raydent treatment						
Ball type (by corrosion resistance)		Blank : High carbon bearing steel ball (standard) S : Stainless steel ball						

PART NUMBER	WORKING BORE DIAMETER	D		L	D ₁	H	PCD	d ₁	d ₂	h	SQUARENESS μm	BASIC LOAD RATING(N)		NO. OF BALLS	WEIGHT (gf)				
		dr.	CLEARANCE									mm	CLEARANCE			mm	TOLERANCE	mm	TOLERANCE
LMF6 L	LMF6L-A	6		12	⁰ / _{-0.013}	35		28		5	20	3.4	6.5	3.3	15	320	520	4	31
LMF8 L	LMF8L-A	8		15	⁰ / _{-0.013}	45		32		5	24	3.4	6.5	3.3	15	430	780	4	53
LMF10 L	LMF10L-A	10		19		55		40		6	29	4.5	8.0	4.4	15	580	1100	4	105
LMF12 L	LMF12L-A	12	⁰ / _{-0.010}	21	⁰ / _{-0.016}	57	⁰ / _{-0.3}	42		6	32	4.5	8.0	4.4	15	650	1200	4	100
LMF13 L	LMF13L-A	13		23	⁰ / _{-0.016}	61		43		6	33	4.5	8.0	4.4	15	810	1570	4	130
LMF16 L	LMF16L-A	16		28		70	⁰ / _{-0.2}	48		6	38	4.5	8.0	4.4	15	1230	2350	5	187
LMF20 L	LMF20L-A	20		32		80		54		8	43	5.5	9.5	5.4	20	1400	2750	5	260
LMF25 L	LMF25L-A	25	⁰ / _{-0.012}	40	⁰ / _{-0.019}	112		62		8	51	5.5	9.5	5.4	20	1560	3140	6	515
LMF30 L		30		45		123		74		10	60	6.6	11.0	6.5	20	2490	5490	6	655
LMF35 L		35		52		135		82		10	67	6.6	11.0	6.5	25	2650	6470	6	970
LMF40 L		40	⁰ / _{-0.015}	60	⁰ / _{-0.022}	154	⁰ / _{-0.4}	96		13	78	9.0	14.0	8.6	25	3430	8040	6	1560
LMF50 L		50		80		192		116	⁰ / _{-0.3}	13	98	9.0	14.0	8.6	25	6080	15900	6	3500
LMF60 L		60	⁰ / _{-0.020}	90	⁰ / _{-0.025}	211		134		18	112	11.0	17.5	10.8	30	7650	20000	6	4500

Note 1) Dynamic load rating is based on the nominal life of 50km.
In case of 100km, C on the table need to be divided by 1,26
Ex) LM12's 50km basis dynamic load rating C = 410N
LM12's 100km basis dynamic load rating C₁₀₀ = 410 / 1,26 = 325,40N

Note 2) Based on the weight of resin retainer

Note 3) Dimension : mm

Note 4) 1N ≒ 0.102kgf