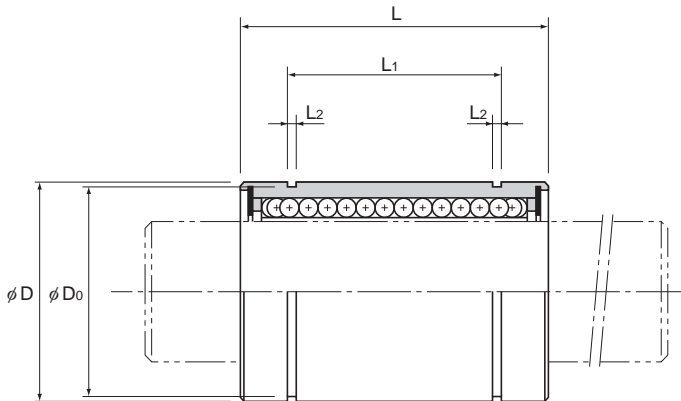


Model LM



Model No.			Ball rows	Main						
Standard type	Clearance-adjustable type	Open type		Inscribed bore diameter		Outer diameter		Length		
				dr	Tolerance		D	Tolerance	L	Tolerance
				High	Precision	High/Precision				
LM 3	—	—	4	3			7		10	
LM 4	—	—	4	4	0	0	8	0	12	0
LM 5	—	—	4	5	-0.008	-0.005	10	-0.009	15	-0.12
LM 6	LM 6-AJ	—	4	6			12		19	
LM 8S	LM 8S-AJ	—	4	8			15	0	17	
LM 8	LM 8-AJ	—	4	8			15	-0.011	24	
LM 10	LM 10-AJ	—	4	10	0	0	19		29	0
LM 12	LM 12-AJ	—	4	12	-0.009	-0.006	21	0	30	-0.2
LM 13	LM 13-AJ	LM 13-OP	4	13			23	-0.013	32	
LM 16	LM 16-AJ	LM 16-OP	5	16			28		37	
LM 20	LM 20-AJ	LM 20-OP	5	20			32		42	
LM 25	LM 25-AJ	LM 25-OP	6	25	0	0	40	0	59	
LM 30	LM 30-AJ	LM 30-OP	6	30	-0.010	-0.007	45	-0.016	64	
LM 35	LM 35-AJ	LM 35-OP	6	35			52	0	70	
LM 40	LM 40-AJ	LM 40-OP	6	40	0	0	60	0	80	0
LM 50	LM 50-AJ	LM 50-OP	6	50	-0.012	-0.008	80	-0.019	100	-0.3
LM 60	LM 60-AJ	LM 60-OP	6	60	0	0	90	0	110	
					-0.015	-0.009		-0.022		

Note) Since this model contains a synthetic resin retainer, do not use it at temperature exceeding 80°C.

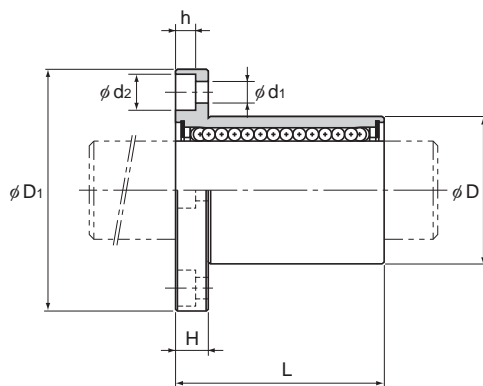
If the ambient temperature exceeds 80°C, use the type equipped with a metal retainer (model LM-GA).

If requiring a type equipped with a seal, indicate it when placing an order.

(Example) LM13 UU

————— Seal attached on both ends of the nut

For the clearance-adjustable type (-AJ) and open type (-OP), the inscribed bore diameter tolerance, the outer diameter tolerance, and the eccentricity indicate the values before the division of the nut.

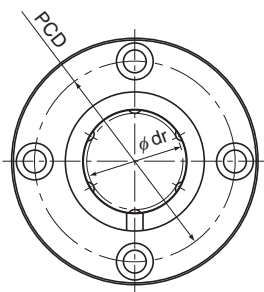


Unit: mm

	H	PCD	Mounting hole d ₁ × d ₂ × h	Flange perpendicularity	Eccentricity (max)	Radial clearance tolerance	Basic load rating		Mass g
				μm	μm	μm	C N	C ₀ N	
	5	20	3.4 × 6.5 × 3.3	12	12	-5	206	265	23
	5	24	3.4 × 6.5 × 3.3	12	12	-5	176	225	29
	5	24	3.4 × 6.5 × 3.3	12	12	-5	265	402	33
	6	29	4.5 × 8 × 4.4	12	12	-5	373	549	59
	6	32	4.5 × 8 × 4.4	12	12	-5	412	598	68
	6	33	4.5 × 8 × 4.4	12	12	-7	510	775	80
	6	38	4.5 × 8 × 4.4	12	12	-7	775	1180	126
	8	43	5.5 × 9.2 × 5.4	15	15	-9	863	1370	160
	8	51	5.5 × 9.2 × 5.4	15	15	-9	980	1570	305
	10	60	6.6 × 11 × 6.5	15	15	-9	1570	2750	422

Note) Since the nut and the balls use stainless steel, these models are highly resistant to corrosion and environment.
If an oil hole is required, this can be indicated by appending "OH" to the end of the model number.
For further information, contact THK.

Model LMF-L



Model LMF-L

Model No. Standard type	Ball rows	Main dimensions							
		Inscribed bore diameter		Outer diameter		Length		Flange diameter	
		dr	Tolerance	D	Tolerance	L	Tolerance	D ₁	Tolerance
LMF 6L	4	6	0 -0.010	12	0	35	0 -0.3	28	0 -0.2
LMF 8L	4	8		15	-0.013	45		32	
LMF 10L	4	10		19	0 -0.016	55		39	
LMF 12L	4	12		21		57		42	
LMF 13L	4	13		23		61		43	
LMF 16L	5	16		28	70	48		0 -0.4	
LMF 20L	5	20	32	0	80	54			
LMF 25L	6	25	40	-0.019	112	62			
LMF 30L	6	30	45	0 -0.022	123	74			
LMF 35L	6	35	52		135	82			
LMF 40L	6	40	60		154	96			
LMF 50L	6	50	80	192	116	0 -0.3			
LMF 60L	6	60	0 -0.020	90	0 -0.025		211	134	

Note) Since this model contains a synthetic resin retainer, do not use it at temperature exceeding 80°C.
If requiring a type equipped with a seal, indicate it when placing an order.

(Example) LMF35L UU

└─── Seal attached on both ends of the nut