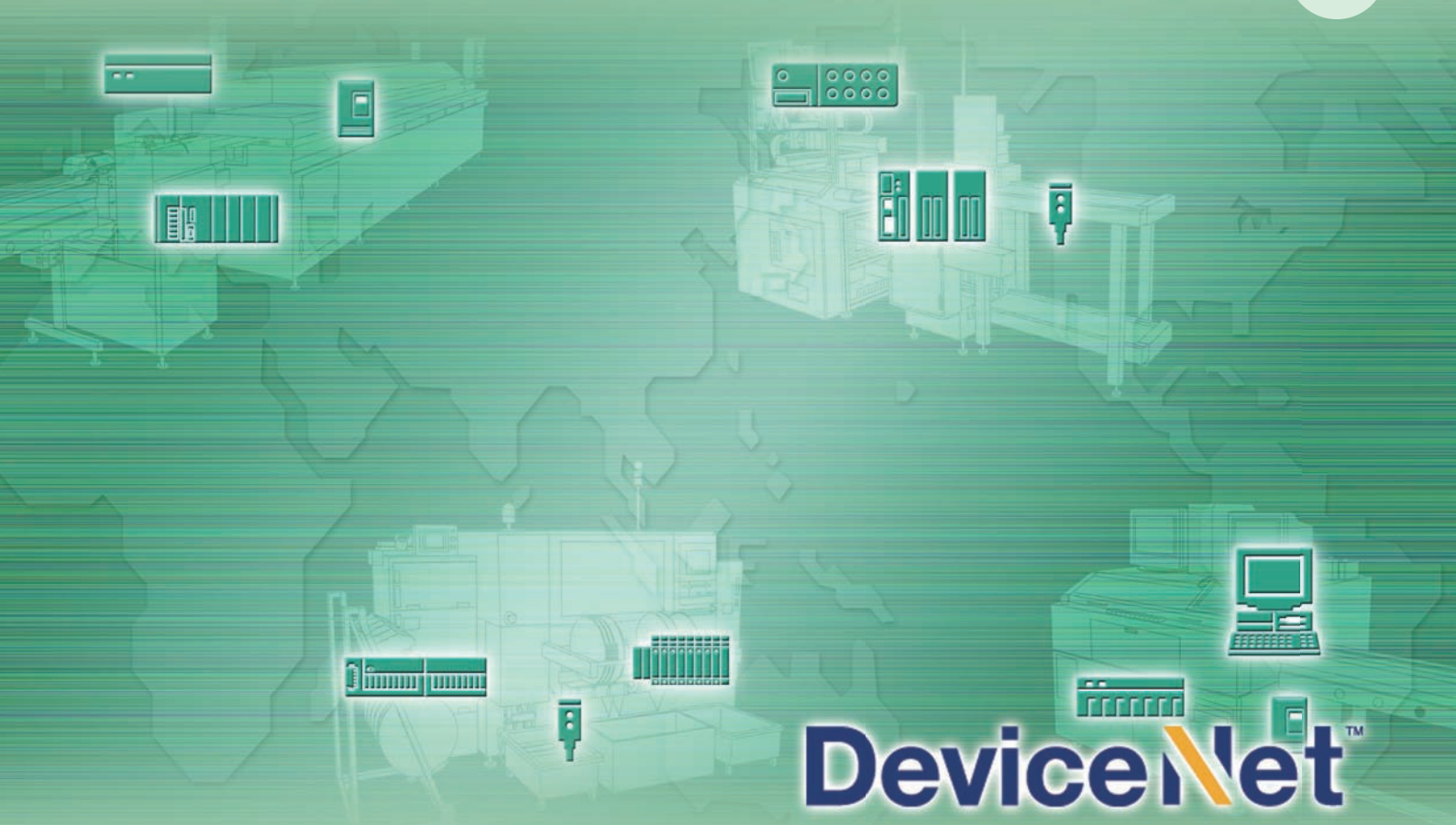


Multi-vendor Network  
**DeviceNet**



**DeviceNet**™

## Slaves

### GRT1 Smart Slaves

#### ■ DeviceNet Communications Unit

P. 68



GRT1-DRT

#### ■ SmartSlice I/O Units

P. 70



GRT1-ID4(-1)  
GRT1-OD4(-1)  
GRT1-ID8(-1)  
GRT1-OD8(-1)  
GRT1-ROS2  
GRT1-AD2  
GRT1-DA2C  
GRT1-DA2V  
GRT1-TS2P  
GRT1-TS2PK  
GRT1-CT1

### MULTIPLE I/O TERMINAL Series

#### ■ Communications Unit ■ Digital I/O Units

P. 73



DRT1-COM

P. 74



GT1-ID16(-1)  
GT1-OD16(-1)



GT1-ID32ML(-1)  
GT1-OD32ML(-1)



GT1-ID16MX(-1)  
GT1-OD16MX(-1)



GT1-ID16ML(-1)  
GT1-ID16DS(-1)  
GT1-OD16ML(-1)  
GT1-OD16DS(-1)

#### ■ Relay Output Units

P. 81



GT1-ROP08  
GT1-FOP08



GT1-ROS16

#### ■ Analog I/O Units

P. 83



GT1-AD08MX  
(connector)



GT1-DA04MX  
(connector)



GT1-AD04  
(terminal block)



GT1-DA04  
(terminal block)

#### ■ Temperature Input Units

P. 85



GT1-TS04T



GT1-TS04P

### PLC Intelligent Slaves

#### ■ Programmable Slaves

P. 88



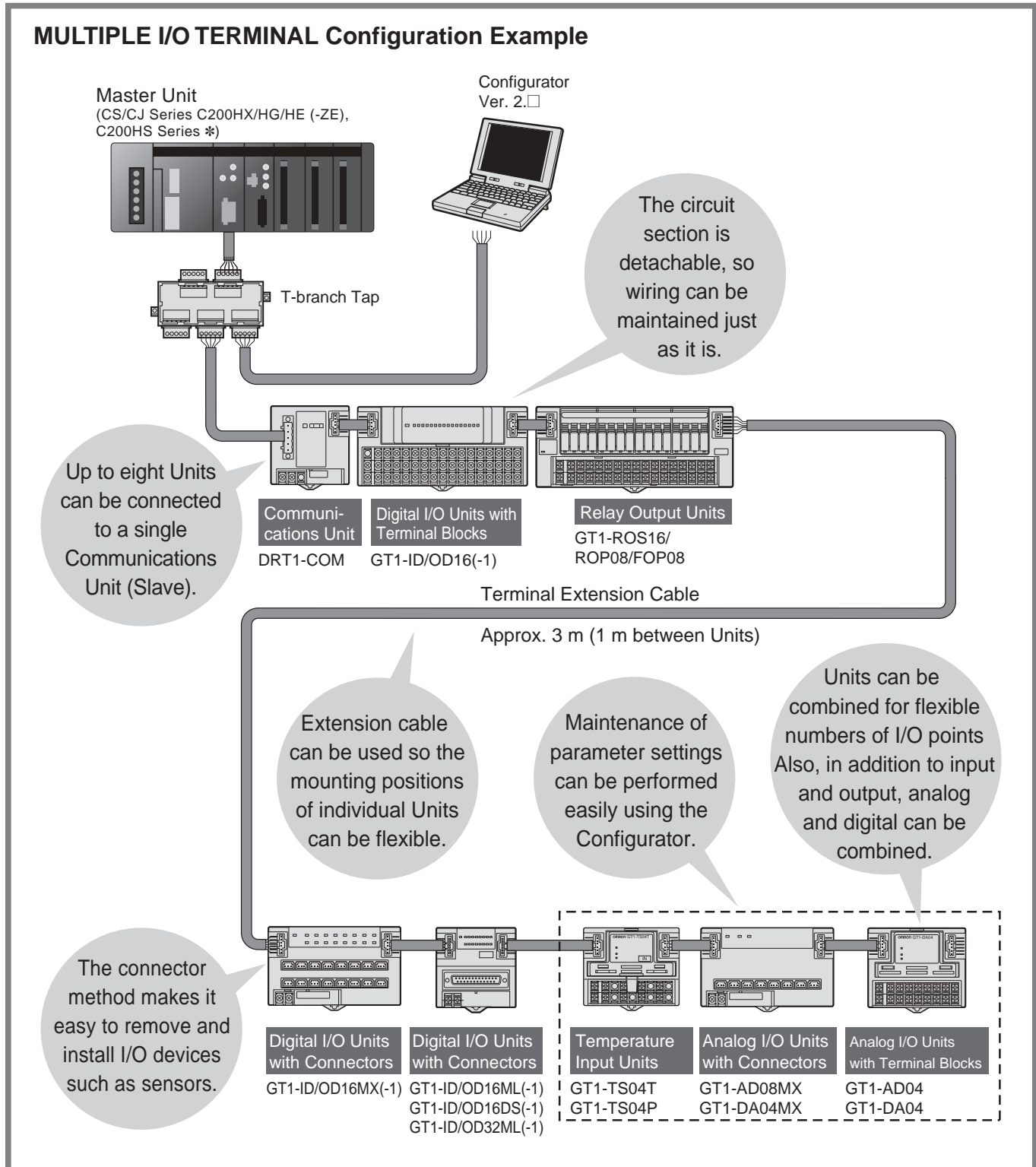
CPM2C-S100C-DRT \*1  
CPM2C-S110C-DRT \*1

\*1. Product no longer available to order.

# MULTIPLE I/O TERMINAL Series

A MULTIPLE I/O TERMINAL with a flexible combination of numerous versatile I/O Units handles digital I/O, analog I/O, counter inputs, or relay outputs and boosts on-site productivity higher than ever. Using a MULTIPLE I/O TERMINAL, one Slave (Communications Unit) can connect to a maximum of eight I/O Units to achieve control of a maximum of 1,024 I/O points. (see Note below.)

## MULTIPLE I/O TERMINAL Configuration Example



\* By using the DeviceNet Configurator (sold separately), control can be performed for up to 32,000 points for CJ1W-DRM21 and CS1W-DRM21-V1 DeviceNet Units, and 4,800 points for C200HX/HG/HE Master Units.  
**Note:** The number of I/O points under control may be restricted by the application. Refer to the *DeviceNet MULTIPLE I/O TERMINAL Operation Manual (W348)* for details.

Relay Output Units

# GT1-ROS16/ROP08/FOP08

## Relay Output Unit Compatible with MULTIPLE I/O TERMINAL

- 8- and 16-point relay output models are available.
- Equipped with 8-point SSRs.
- DIN track mounting.



### Ordering Information

I/O classification	I/O points	I/O connections	Power supply voltage	I/O specification	Model
Relay output	16	M3 terminal block	24 VDC	2 A, SPST-NO	GT1-ROS16
	8			5 A, SPST-NO	GT1-ROP08
SSR	8			--	GT1-FOP08

### General Specifications

<b>I/O power supply voltage</b>	20.4 to 26.4 VDC (24 VDC -15%/+10%)			
<b>Current consumption *</b>	I/O Unit interface		I/O power supply	
	GT1-ROP08	40 mA max.	GT1-ROP08	350 mA max.
	GT1-FOP08		GT1-FOP08	
	GT1-ROS16	50 mA max.	GT1-ROS16	250 mA max.
<b>Connectable Units</b>	8			
<b>Dielectric strength</b>	500 VAC (between isolated circuits)			
<b>Noise immunity</b>	Conforms to IEC 61000-4-4, 2 kV (power line)			
<b>Vibration resistance</b>	10 to 55 Hz, 1.0-mm double amplitude or 70 m/s <sup>2</sup>			
<b>Shock resistance</b>	200 m/s <sup>2</sup>			
<b>Mounting method</b>	DIN 35 mm-track mounting			
<b>Mounting strength</b>	No damage when 100 N pull load was applied in all directions			
<b>Terminal strength</b>	No damage when 100 N pull load was applied			
<b>Screw tightening torque</b>	0.3 to 0.5 N·m			
<b>Ambient operating temperature</b>	-10°C to 55°C			
<b>Ambient operating humidity</b>	25% to 85% (with no icing or condensation)			
<b>Ambient storage temperature</b>	-25°C to 65°C			
<b>Accessories</b>	I/O Unit Connecting Cable (40 mm)			

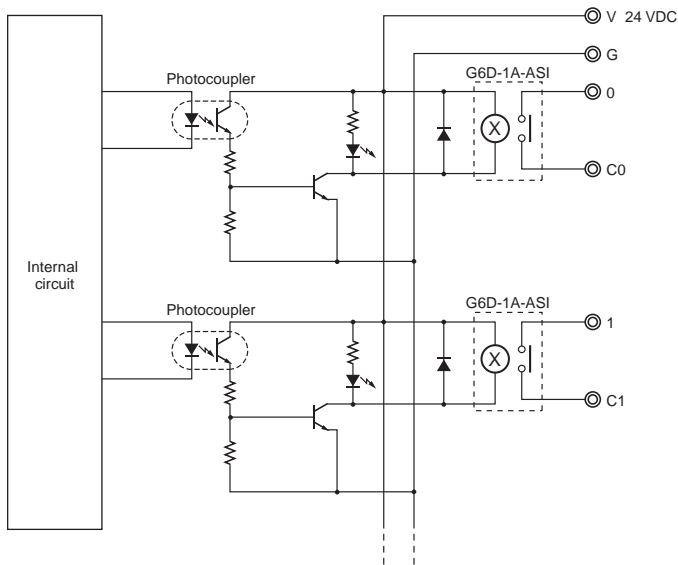
\* The above current consumption is a value with all the points turned ON including the current consumption of the relay coils.

### Relay Output Specifications

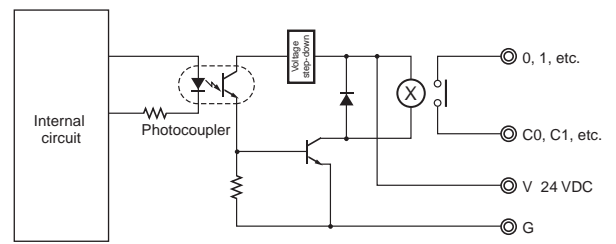
Item	Model	GT1-ROS16	GT1-ROP08	GT1-FOP08
<b>Relay model</b>		G6D-1A-ASI (24 VDC)	G2R-1-SN (24 VDC)	G3R-ODX02SH-UTU (5 to 24 VDC)
<b>Maximum contact current</b>		2 A	5 A	0.01 to 1.5 A
<b>Minimum applicable load (reference values)</b>		5 VDC, 10 mA	5 VDC, 100 mA	4 to 48 VDC
<b>Electrical life expectancy</b>		100,000 operations min. with switching frequency of 1,800 operations per hour (at ambient temperature of 23°C with rated load)		--
<b>Mechanical life expectancy</b>		20,000,000 operations min. with switching frequency of 18,000 operations per hour (at ambient temperature of 23°C with rated load)		--

# Internal Circuit Configuration

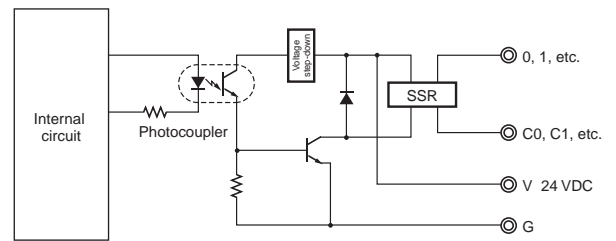
GT1-ROS16



GT1-ROP08



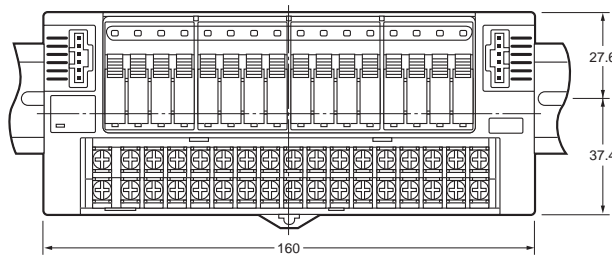
GT1-FOP08



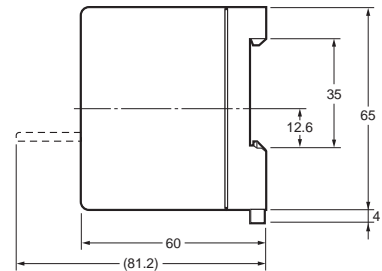
## Dimensions

(Unit: mm)

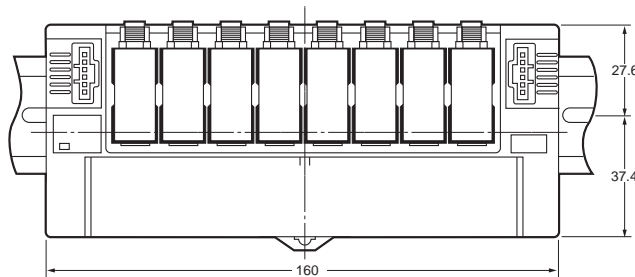
GT1-ROS16



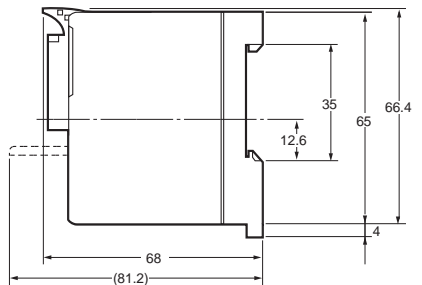
Note: Accessory cable included.



GT1-ROP08  
GT1-FOP08

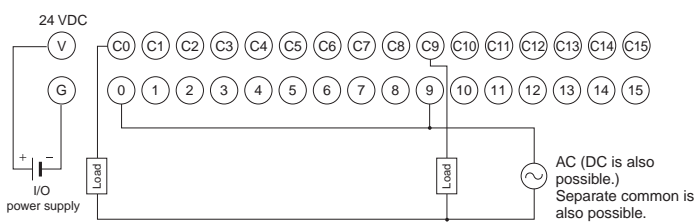


Note: Accessory cable included.

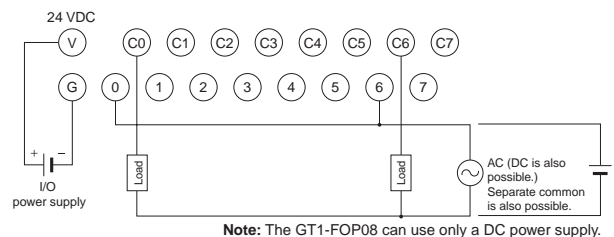


## Wiring Diagrams

GT1-ROS16




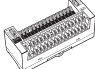

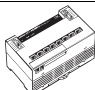

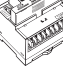

GT1-ROP08/GT1-FOP08




Note: The GT1-FOP08 can use only a DC power supply.



● MULTIPLE I/O TERMINALS

Product	Appearance	I/O points	Specifications	Model	Standards
Communications Unit		--	Slave I/O points 1,024 max. (inputs and outputs)	<b>DRT1-COM</b>	U, C, CE
Digital I/O Units	Terminal block models	16 inputs	NPN (+ common)	<b>GT1-ID16</b>	U, C, CE
		16 inputs	PNP (- common)	<b>GT1-ID16-1</b>	
		16 outputs	NPN (- common)	<b>GT1-OD16</b>	
		16 outputs	PNP (+ common)	<b>GT1-OD16-1</b>	
	Molex connector models	16 inputs	NPN (+ common)	<b>GT1-ID16MX</b>	
		16 inputs	PNP (- common)	<b>GT1-ID16MX-1</b>	
		16 outputs	NPN (- common)	<b>GT1-OD16MX</b>	
		16 outputs	PNP (+ common)	<b>GT1-OD16MX-1</b>	
	Fujitsu connector models	16 inputs	NPN (+ common)	<b>GT1-ID16ML</b>	
		16 inputs	PNP (- common)	<b>GT1-ID16ML-1</b>	
		16 outputs	NPN (- common)	<b>GT1-OD16ML</b>	
		16 outputs	PNP (+ common)	<b>GT1-OD16ML-1</b>	
	D-sub, 25-pin connector models	16 inputs	NPN (+ common)	<b>GT1-ID16DS</b>	
		16 inputs	PNP (- common)	<b>GT1-ID16DS-1</b>	
		16 outputs	NPN (- common)	<b>GT1-OD16DS</b>	
		16 outputs	PNP (+ common)	<b>GT1-OD16DS-1</b>	
Fujitsu high-density connector models	32 inputs	NPN (+ common)	<b>GT1-ID32ML</b>		
	32 inputs	PNP (- common)	<b>GT1-ID32ML-1</b>		
	32 outputs	NPN (- common)	<b>GT1-OD32ML</b>		
	32 outputs	PNP (+ common)	<b>GT1-OD32ML-1</b>		
Relay Output Unit		16 outputs	Relay Output Unit with 16 points, 2 A, SPST-NO terminal block	<b>GT1-ROS16</b>	U, C, CE
		8 outputs	Relay Output Unit with 8 points, 5 A, SPST-NO terminal block	<b>GT1-ROP08</b>	--
		8 outputs	SSR Output Unit with 8 points, 1.5 A, SPSTNO terminal block	<b>GT1-FOP08</b>	
Analog Input Units		8 inputs	Molex connector	<b>GT1-AD08MX</b>	U, C, CE
		4 inputs	Terminal block	<b>GT1-AD04</b>	
Analog Output Units		4 outputs	Molex connector	<b>GT1-DA04MX</b>	U, C, CE
		4 outputs	Terminal block	<b>GT1-DA04</b>	
Temperature Input Units		4 inputs	Thermocouple input	<b>GT1-TS04T</b>	U, C, CE
		4 inputs	Platinum-resistance thermometer input	<b>GT1-TS04P</b>	
I/O Unit Connecting Cable		--	1 m	<b>GCN1-100</b>	--
		--	30 cm	<b>GCN1-030</b>	
		--	60 cm	<b>GCN1-060</b>	

● Intelligent Slaves (PLC Units) (No longer available to order)

Product	Appearance	Specifications	Model	Standards	
Programmable Slaves		Slave equipped with CPM2C CPU Unit functions 1,024 points max. for Remote I/O Links Includes CompoBus/s Master.	4 transistor outputs (sinking)	<b>CPM2C-S100C-DRT</b>	U, C, CE
			4 transistor	<b>CPM2C-S110C-DRT</b>	