

foot master adjustable caster GD series

newest caster



size	50mm ~ 97mm
permissible load	125daN ~ 750daN



GD-100F



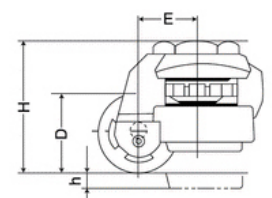
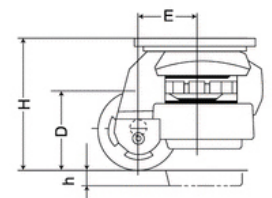
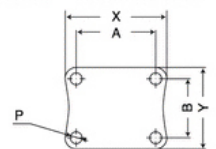
GD-80S

item number	wheel type	permissible load	wheel diameter	wheel width	mounting height	mounting pitch	plate measurement	mounting hole diameter	eccentricity	adjuster adjustment amount	adjuster base diameter	weight kg
		daN	Dmm	mm	Hmm	A×B mm	X×Ymm	Pmm	Emm	hmm	mm	
GDN-60F	nylon	125	50	25	82	58×58	73×73	6.5	35	10	43	0.65
GD-80F	nylon	250	63	30	102	70×70	90×90	9.0	46	15	51	1.40
GD-100F	nylon	375	74	30	120	70×70	95×95	11.0	52	12	70	1.80
GD-120F	nylon	500	75	33	120	70×70	95×95	11.0	52	12	70	2.60
GD-150F	monomer casting nylon	750	97	52	131	70×70	100×100	13.0	69	15	64	5.20

■“F” type of the plate model will come with one set of mounting bolts and nuts.

item number	wheel type	permissible load	wheel diameter	wheel width	mounting height	screw	shaft length	eccentricity	mounting bolts inner diameter	adjuster adjustment amount	adjuster base diameter	weight kg
		daN	Dmm	mm	Hmm	T	mm	Emm	mm	hmm	mm	
GD-40S	nylon	25	42	20	71	M8×P1.25	10	30	4	10	37	0.30
GDN-60S	nylon	125	50	25	82	M12×P1.75	18	35	6	10	43	0.65
GD-80S	nylon	250	63	30	102	M12×P1.75	18	46	6	15	51	1.40
GD-100S	nylon	375	74	30	120	attention) M16×P2.0	24	52	8	12	70	1.80
GD-120S	nylon	500	75	33	120	attention) M16×P2.0	24	52	8	12	70	2.60

■“S” type of the screw on model will come with a set of specialized stems and nuts for a proper build
attention: we are able to produce mounting stems by request M20xP2.5 (the shape will be slightly changed)



★special features

- from research equipments to measuring tools, casters with adjusters allows for wide range of use
- able to easily maneuver and adjust height. No need to use any tool to adjust the height for models GD-40 -100.
- GD120 and GD-150 had a different form (shape)
- You will need a spanner to adjust the height for models GD-129 and GD-150