



INSTRUCTION MANUAL
FasTrak®



Instruction, installation and
maintenance manual





INSTRUCTION MANUAL

FasTrak®



2.2 Specifications for explosion proof

- **Connections**
 - POWER: 2 wires from signal (min 3.6 mA, 19÷24 Vdc – Z equivalent 950 ohm)
 - ELECTRICAL CONNECTION:
 - Signal ½" NPT (or metric M20x1.5 on request)
 - Auxiliary input/output ½" NPT (or metric M20x1.5 on request)
 - PNEUMATIC CONNECTION: ½" NPT female
 - COMMUNICATION PROTOCOL: HART, TTL RS232
- **Input**
 - ANALOG: 4÷20 mA – HART™
- **Output**
 - ANALOG: 4÷20 mA passive loop powered 14,5÷24,5 V
- **Stroke Movement**
 - FEEDBACK ANGLE OF ROTATION: 30°÷120° (<30° with lower resolution)
 - ADJUSTABLE SPEED: range 0÷300 seconds, individually configurable for each direction
 - CHARACTERISTIC CURVE:
 - linear
 - equal percentage
 - configurable
 - CONTROL PARAMETER: individually configurable for each direction
 - TRAVEL CONTROL: Min. and Max settable stroke limits; adjustable pressure on seat
- **Air supply**
 - INSTRUMENT AIR: free of oil, water and dust to ISO 8573-1 – Class 3
- SUPPLY PRESSURE: 2.5÷10 bar
- AIR CONSUMPTION: 1.5 Nm³/h at 6 bar
- **Performance Data (for angle > 90°) according to IEC 61514-2**
 - HYSTERESIS+DEADBAND: ±0.15%
 - REPEATIBILITY: ±0.15%
 - SENSITIVITY: ±0.1%
 - LINEARITY: ±0.3%
 - INFLUENCE OF AMBIENT
 - TEMPERATURE: ≤0.3% for every 10°C
 - FLOW CAPABILITY: 180Nm³/h at 6bar (CV 2.3)
 - ACTION: configurable single or double
- **Environmental capabilities**
 - HAZARDOUS PROTECTION: ATEX II 2 (1) G Ex d IIC T6/T5/T4
 - AMBIENT:
 - protection IP66 (NEMA 4x)
 - operation temperature: -40°C / +80°C (-55°C / +80°C for TR CU)
 - storage temperature: -40°C / +80°C (storehouse must be clean and dry, absence of corrosive gases or vapours)
 - HUMIDITY: up to 100%
 - VIBRATIONS: up to 2g (ISA-S75.13)
 - CE MARK: CE conformity and EMC
- **Case materials and weights**
 - Aluminium, low copper content with stainless steel feedback shaft – 4,11 kg
 - Stainless steel 316 – 10,78 kg
- **Options available**

Same of intrinsically safe execution (excluded fail freeze version)

**See selection guide for options / certifications available*

2.3 Specifications for natural gas execution

- **Natural gas supply**
 - Natural gas clean and dry as ISO 8573-1 – Class 3
 - SUPPLY PRESSURE: 2.5÷6 bar
 - GAS CONSUMPTION: 1.5 Nm³/h at 6 bar



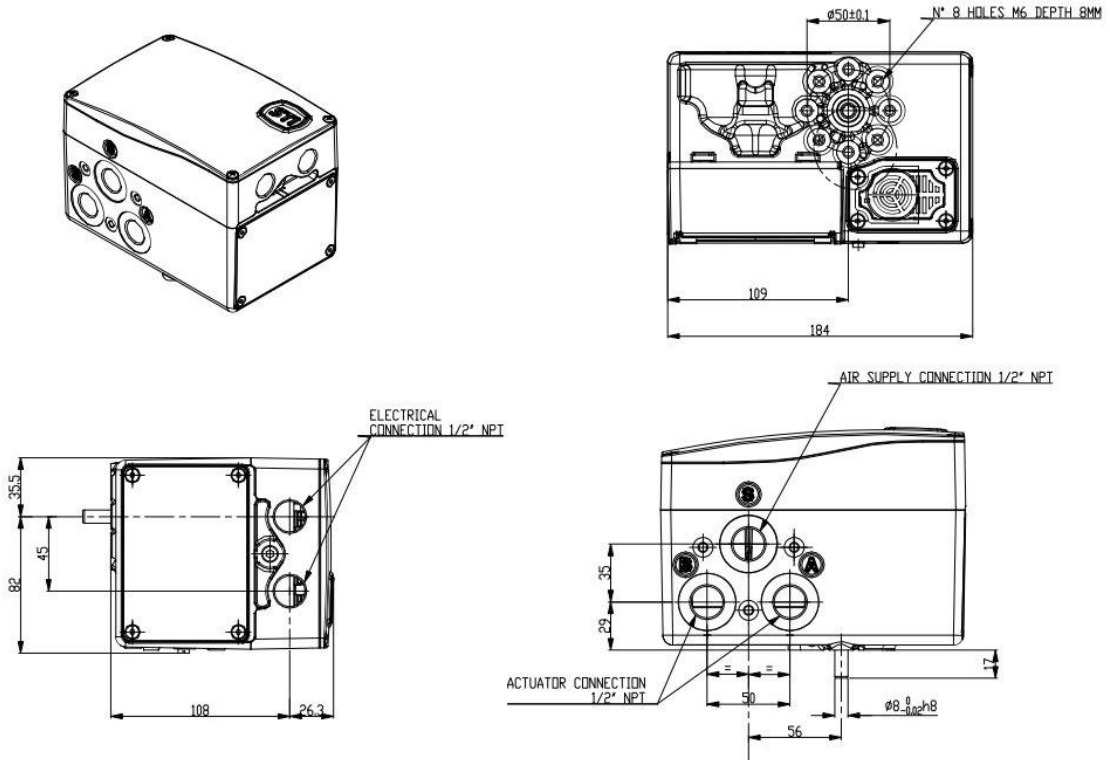
INSTRUCTION MANUAL

FasTrak®



8.0 DIMENSIONAL DRAWINGS

8.1 Intrinsically safe (aluminum case)



8.2 Intrinsically safe (stainless steel 316 case)

