

FL HUB 16TX-ZF - Ethernet hub



2832564

<https://www.phoenixcontact.com/za/products/2832564>

Please be informed that the data shown in this PDF document is generated from our Online Catalog. Please find the complete data in the user documentation. Our General Terms of Use for Downloads are valid.



Rail-mountable Ethernet hub with 16 RJ45 ports, supports Ethernet with 10 Mbps as well as 100 Mbps

Product Description

Ethernet hub with 16 RJ45 ports. The hub enables quick and cost-effective Ethernet network extension. It has sixteen twisted pair ports, which you can use to connect additional network segments or termination devices. The FL HUB 16 TX-ZF supports both Ethernet with 10 Mbps and with 100 Mbps. The hub regenerates the received data telegrams and sends them to the remaining ports. For port 5, a port assignment switch is located on the hub. The transmit and receive cables are exchanged at port 5 by actuating the switch, while polarity is maintained.

Your advantages

- Outcross port
- 10/100 Mbps, can be selected
- High port density

Commercial Data

Item number	2832564
Packing unit	1 pc
Minimum order quantity	1 pc
Note	Made to Order (non-returnable)
Sales Key	DIS
Product Key	DNN141
Catalog Page	Page 399 (C-6-2017)
GTIN	4017918996222
Weight per Piece (including packing)	512,8 g
Weight per Piece (excluding packing)	280 g
Customs tariff number	85176200
Country of origin	DE

FL HUB 16TX-ZF - Ethernet hub



2832564

<https://www.phoenixcontact.com/za/products/2832564>

Technical Data

Dimensions

Width	90 mm
Height	99 mm
Depth	112 mm

Material specifications

Color	green
Housing material	Plastic

Mounting

Mounting type	DIN rail mounting
---------------	-------------------

Interfaces

Ethernet

Connection method	RJ45 jack
Transmission speed	10/100 Mbps
Transmission physics	Ethernet RJ45
Transmission length	100 m
Signal LEDs	Data receive, link status
No. of channels	16 (RJ45 ports)

Product properties

Type	Stand-Alone
Product type	Switch
Operating mode	Semi-duplex

Insulation characteristics

Protection class	III (IEC 61140, EN 61140, VDE 0140-1)
------------------	---------------------------------------

Switch functions

Basic functions	Hub/repeater, compliance with IEEE 802.3
Status and diagnostic indicators	LEDs: UL (communications voltage), COL (collision) link and receive LED per port

Security functions

Basic functions	Hub/repeater, compliance with IEEE 802.3
-----------------	--

Electrical properties

Electrical isolation	10BASE-T//100BASE-TX//Supply
Local diagnostics	US Supply voltage Green LED
	COL Telegram collisions LED red
	Link status Green LED
Maximum power dissipation for nominal condition	3.456 W

FL HUB 16TX-ZF - Ethernet hub



2832564

<https://www.phoenixcontact.com/za/products/2832564>

Test section	500 V AC 50 Hz 1 min.
Transmission medium	Copper

Supply

Supply voltage (DC)	24 V DC
Supply voltage range	18.5 V DC ... 30.5 V DC
Power supply connection	Via COMBICON, max. conductor cross section 2.5 mm ²
Residual ripple	3.6 V _{PP} (within the permitted voltage range)
Typical current consumption	typ. 144 mA (at U _S = 24 V DC)

Environmental and real-life conditions

Ambient conditions

Degree of protection	IP20
Ambient temperature (operation)	0 °C ... 55 °C
Ambient temperature (storage/transport)	-25 °C ... 70 °C
Permissible humidity (operation)	30 % ... 95 % (non-condensing)
Permissible humidity (storage/transport)	30 % ... 95 % (non-condensing)
Vibration (operation)	in acc. with IEC 60068-2-6: 5g, 150 Hz
Air pressure (operation)	86 kPa ... 108 kPa (1500 m above sea level)
Air pressure (storage/transport)	66 kPa ... 108 kPa (3500 m above sea level)
Resistance to gases that may endanger the functions, in acc. with DIN 40046-36, DIN 40046-37	Sulfur dioxide (SO ₂) 10 ±0.3 cm ³ /m ³ , hydrogen sulfide (H ₂ S) 1 ±0.3 cm ³ /m ³ , at 25°C and 75% humidity and exposure of four days

Standards and regulations

Free from substances that could impair the application of coating	In acc. with VW specification
Electrical isolation	10BASE-T//100BASE-TX//Supply

EMC data

Conformance with EMC directives	IEC 61000-6-2 IEC 61000-4-2 (ESD) Criterion B
	IEC 61000-4-3 (immunity to radiated interference) Criterion A
	IEC 61000-4-4 (burst) Criterion B
	IEC 61000-4-5 (surge) Class A
	IEC 61000-4-6 (immunity to conducted interference) Criterion A
	IEC 61000-4-8 (immunity to magnetic fields) Criterion A
	EN 55022 (emitted interference) Criterion A
Electromagnetic compatibility	Conformance with EMC Directive 2014/30/EU
Noise emission	EN 61000-6-4
Noise immunity	EN 61000-6-2:2005

LED signaling

Status display	LEDs: UL (communications voltage), COL (collision) link and receive LED per port
----------------	--

FL HUB 16TX-ZF - Ethernet hub

2832564

<https://www.phoenixcontact.com/za/products/2832564>



Classifications

ETIM

ETIM 7.0

EC000731

FL HUB 16TX-ZF - Ethernet hub

2832564

<https://www.phoenixcontact.com/za/products/2832564>



Environmental Product Compliance

China RoHS	Environmentally friendly use period: unlimited = EFUP-e
	No hazardous substances above threshold values

FL HUB 16TX-ZF - Ethernet hub

2832564

<https://www.phoenixcontact.com/za/products/2832564>



Accessories

FL CAT5 PATCH 0,3 - Patch cable

2832250

<https://www.phoenixcontact.com/za/products/2832250>

Patch cable, CAT5, assembled, 0.3 m



FL CAT5 PATCH 0,5 - Patch cable

2832263

<https://www.phoenixcontact.com/za/products/2832263>

Patch cable, CAT5, assembled, 0.5 m



FL HUB 16TX-ZF - Ethernet hub

2832564

<https://www.phoenixcontact.com/za/products/2832564>



FL CAT5 PATCH 1,0 - Patch cable

2832276

<https://www.phoenixcontact.com/za/products/2832276>

Patch cable, CAT5, assembled, 1 m



FL CAT5 PATCH 1,5 - Patch cable

2832221

<https://www.phoenixcontact.com/za/products/2832221>

Patch cable, CAT5, assembled, 1.5 m



FL HUB 16TX-ZF - Ethernet hub

2832564

<https://www.phoenixcontact.com/za/products/2832564>



FL CAT5 PATCH 2,0 - Patch cable

2832289

<https://www.phoenixcontact.com/za/products/2832289>

Patch cable, CAT5, assembled, 2 m



FL CAT5 PATCH 3,0 - Patch cable

2832292

<https://www.phoenixcontact.com/za/products/2832292>

Patch cable, CAT5, assembled, 3 m



FL HUB 16TX-ZF - Ethernet hub

2832564

<https://www.phoenixcontact.com/za/products/2832564>



FL CAT5 PATCH 5,0 - Patch cable

2832580

<https://www.phoenixcontact.com/za/products/2832580>

Patch cable, CAT5, assembled, 5 m



FL CAT5 PATCH 7,5 - Patch cable

2832616

<https://www.phoenixcontact.com/za/products/2832616>

Patch cable, CAT5, assembled, 7.5 m



FL HUB 16TX-ZF - Ethernet hub

2832564

<https://www.phoenixcontact.com/za/products/2832564>



FL CAT5 PATCH 10,0 - Patch cable

2832629

<https://www.phoenixcontact.com/za/products/2832629>

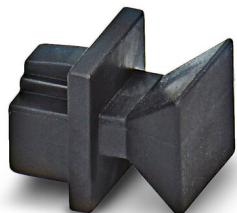


Patch cable, CAT5, assembled, 10 m

FL RJ45 PROTECT CAP - Dust protection

2832991

<https://www.phoenixcontact.com/za/products/2832991>



Dust protection caps for RJ45 socket

Phoenix Contact 2023 © - all rights reserved
<https://www.phoenixcontact.com>

PHOENIX CONTACT (Pty) Ltd.
36 Lyn Road P.O. Box 916 ZA-Ferndale 2160

+27/11/801-8200
info@phoenixcontact.co.za