

---

**Explosion Proof Drop Light (Hand Lamp) with inline transformer - 230VAC to 24VAC OR 24VDC**  
**EPL-230X24VAC-100**

Please see last page for supporting documentation for this product(certificates, CAD files & drawings, IES files, wiring diagrams, etc).



---

**EPL-230X24VAC-100**

**UL Listing: United States**

**Dimensions:** Lamp only- L-16.5" Dia-5"

**Total Watts: 60 or 100 watts**

**Voltage:** 240V AC Stepped down to 24V AC or 24V DC

**Mounting:** Hook

**Wiring:** 100' 16/3 SOOW input w/ cord cap, 100' 12/3 SOOW from the Transformer to Light

**Cord Cap Options:** 6-15 Straight, L6-15 Twist, UK BS1363, Intl. Schuko, Pigtail

**Lamp Type:** Incandescent

**YOU CAN RENT THIS UNIT. CONTACT 1-800-369-6671.**

[Click here to view the Explosion Proof Light Design Description](#)

**NTRL Listings**

Class I Division 1 Groups C & D (100 watt)

Class II Division 1 Groups F & G (75 watt)

**Special Orders- Requirements**

Contact us for special requirements

**Toll Free:** 1-800-369-6671

**Intl:** 1-903-270-1187

**E-mail:** [sales@larsonelectronics.com](mailto:sales@larsonelectronics.com)



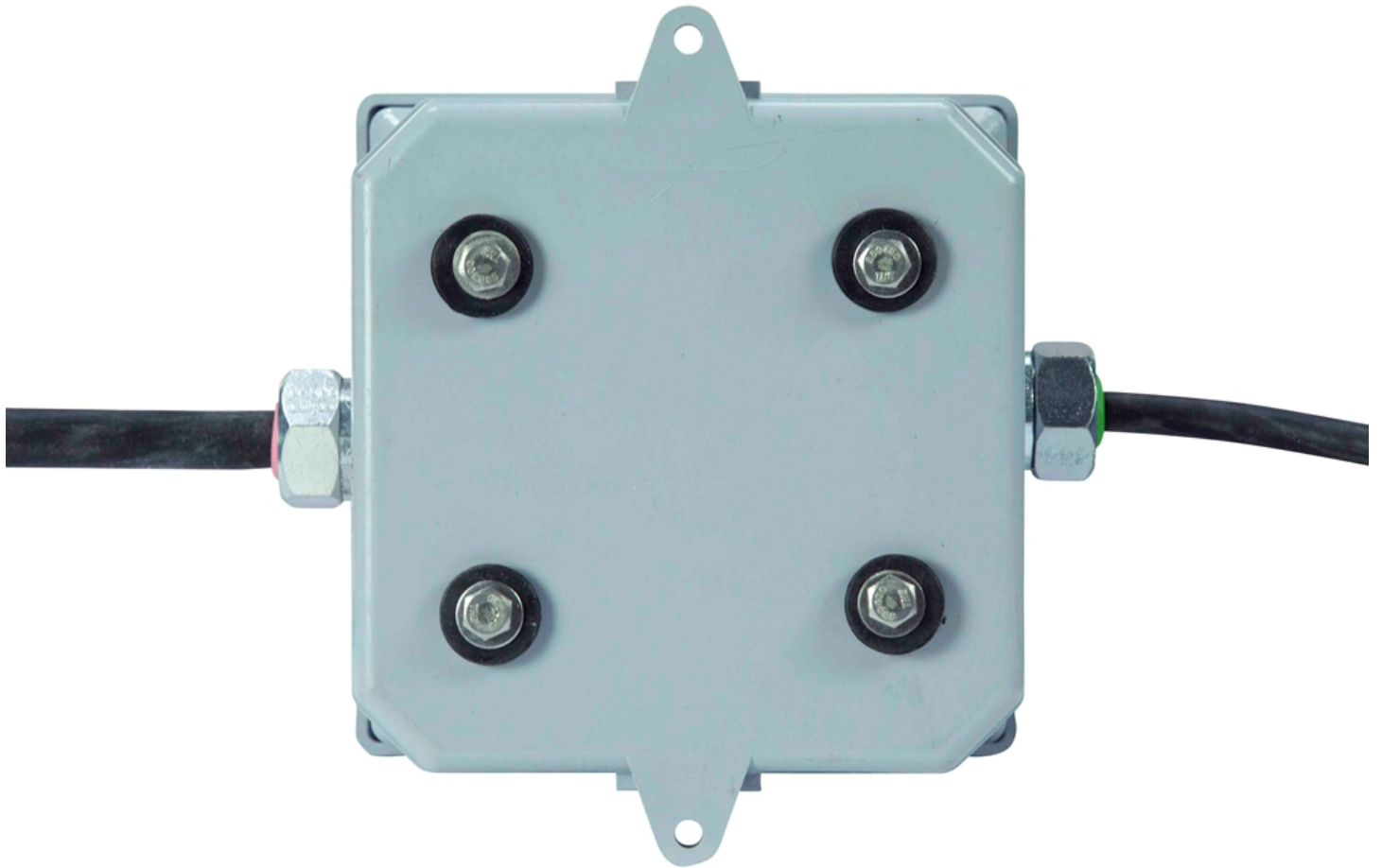
---

## Frequently Asked Questions (FAQ)









**Options:**

**EPL-230X24VAC-100-Cord Cap-Bulb-Voltage**

**Example: EPL-230X24VAC-100-6.15-100W-24VAC**

Cord Cap	
6-15 STRAIGHT	-6.15
6-20 STRAIGHT	-6.20
L6-15 TWIST	-L6.15
L6-20 TWIST	-L6.20
UK BS1363	-BS1363
INTL SCHUKO	-SCHUKO
PIGTAIL	-PIGTAIL

Bulb	
100 WATT (C1 D1)	-100W
60 WATT (C2 D1)	-60W

Voltage	
24 VOLTS AC	-24VAC
24 VOLTS DC	-24VDC

Links (Click on the below items to view):

- [Canadian CEC Certificate \(Commonly referred to as CSA Certificate\)](#)
- [CE Certificate](#)
- [Certificate 1, Misc](#)
- [Certificate 2, Misc](#)
- [Certificate 3, Misc](#)
- [Dimensional Drawing 2D](#)
- [MSDS \(Material Safety Data Sheet](#)
- [Operations Manual](#)
- [RoHS Certificate \(Restriction of Hazardous Substances\)](#)
- [SpecSheetArabic](#)
- [SpecSheetFrench](#)
- [STEP File \(3D CAD Model\)](#)
- [USA NEC Certificate \(Commonly referred to as UL Certificate\)](#)
- [Wiring Diagram \(Online\)](#)
- [HigResPic1](#)
- [HigResPic2](#)
- [HigResPic3](#)
- [HigResPic4](#)
- [HigResPic5](#)
- [HigResPic6](#)
- [HigResPic7](#)
- [HigResPic8](#)
- [ISO 9001 Certification](#)
- [Business Certificate](#)