



BULLETIN 510 C



**Pneumatic Machine
Safeguarding
Solutions**

**Complete Your System with
ROSS CONTROLS® Safety-Related Products**



Pilot operated checks are designed to trap pressure in order to hold a cylinder in place. Poppet internals use internal pressure to help complete the seal in order to trap pressure and hold the position of the cylinder in place. There are a variety of options for pressure relief such as manual, remote signal, and electrical to meet the requirements of the specific application.



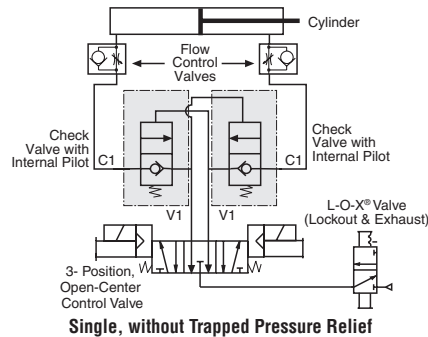
PO Check Valves, Pressure Controlled, Load Holding

Valve Type	Ports Size	Body Size	Valve Model Number		Signal Port	C _v
			BSPG Threads	NPT Threads		
Single, without Trapped Pressure Relief	1/4	3/8	D2751A2903	2751A2903	1/4	2.3
	3/8	3/8	D2751A3901	2751A3901	1/4	3.8
	1/2	3/8	D2751A4902	2751A4902	1/4	4.0
	1/2	3/4	D2751A4905	2751A4905	1/4	7.7
	3/4	3/4	D2751A5903	2751A5903	1/4	9.0
	1	3/4	D2751A6901	2751A6901	1/4	9.0
	1	1 1/4	D2751B6904	2751B6904	1/4	24
	1 1/4	1 1/4	D2751B7901	2751B7901	1/4	29
1 1/2	1 1/4	D2751B8902	2751B8902	1/4	29	

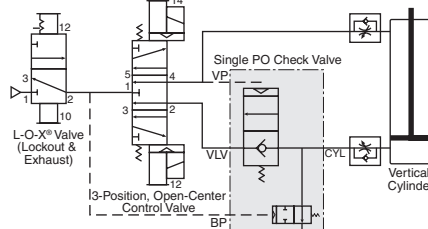
PO Check Valves, Pressure Controlled, Load Holding

Valve Type	Ports Size	Valve Model Number		Signal Port	C _v
		BSPG Threads	NPT Threads		
Single, without Trapped Pressure Relief	1/4	D2751A2908	2751A2908	1/8-27 NPT	2.2
	3/8	D2751A3908	2751A3908	1/8-27 NPT	2.9
	1/2	D2751A4915	2751A4915	1/8-27 NPT	3.2
Single, with Remote Trapped Pressure Relief	3/8	D2751A3922	2751A3922	1/8-27 NPT	2.6
	1/2	D2751A4922	2751A4922	1/8-27 NPT	2.8
Single, with Manual Trapped Pressure Relief	3/8	D2751A3920	2751A3920	N/A	2.6
	1/2	D2751A4920	2751A4920	N/A	2.8
Dual, without Trapped Pressure Relief	3/8	D2768C3900	2768C3900	1/8-27 NPT	2.9
	1/2	D2768C4900	2768C4900	1/8-27 NPT	3.2
	3/4	D2768C5900	2768C5900	1/8-27 NPT	8.5 #
Dual, with Remote Trapped Pressure Relief	3/8	D2768D3901	2768D3901	1/8-27 NPT	2.9
	1/2	D2768D4901	2768D4901	1/8-27 NPT	3.2
	3/4	D2768D5901	2768D5901	1/8-27 NPT	8.5 #
Dual, with Manual Trapped Pressure Relief	3/8	D2768D6901	2768D6901	1/8-27 NPT	8.5 #
	1/2	D2768D3904	2768D3904	N/A	2.9
	1/2	D2768D4904	2768D4904	N/A	3.2
Dual, with Manual Trapped Pressure Relief	3/4	D2768D5904	2768D5904	N/A	8.5 #
	1	D2768D6904	2768D6904	N/A	8.5 #

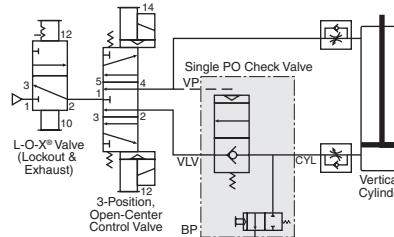
Effective C_v varies with load and pressure drop. Consult ROSS for specifics on your system.



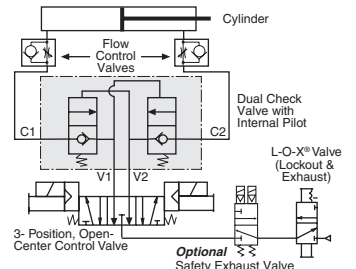
Single, without Trapped Pressure Relief



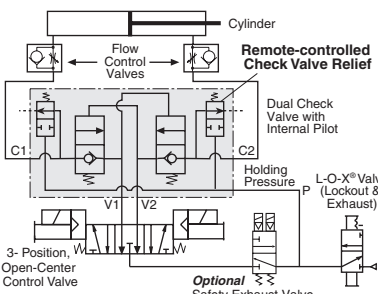
Single, with Remote Trapped Pressure Relief



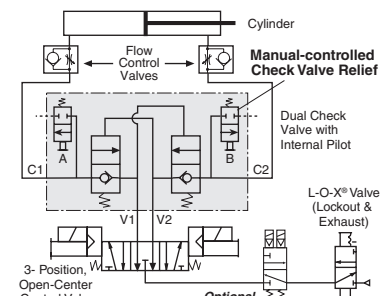
Single, with Manual Trapped Pressure Relief



Dual, without Trapped Pressure Relief



Dual, with Remote Trapped Pressure Relief



Dual, with Manual Trapped Pressure Relief

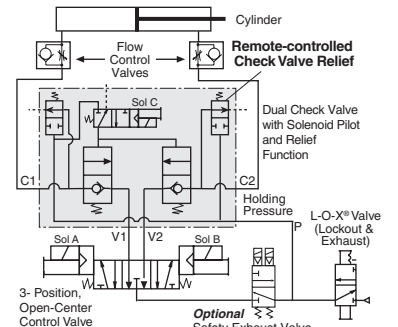
PO Check Valves, Solenoid Pilot Controlled, Load Holding

Valve Type	Ports Size	Valve Model Number*				Signal Port	C _v
		DIN Connector	3-Pin Mini Connector	24 Volts DC 3-Pin Mini	24 Volts DC 4-Pin Micro		
Dual, Solenoid Controlled, with Remote Trapped Pressure Relief	3/8	2778D3900**	2778D3901**	2778D3902	2778D3904	1/8-27 NPT	2.9
	1/2	2778D4900**	2778D4901**	2778D4902	2778D4904	1/8-27 NPT	3.2
	3/4	2778D5900**	2778D5901**	2778D5902	2778D5904	1/8-27 NPT	8.5 #
	1	2778D6900**	2778D6901**	2778D6902	2778D6904	1/8-27 NPT	8.5 #

* NPT port threads. For BSPG threads, add a "D" prefix to the model number, e.g., D2751A2903.

** Insert voltage code: "W" = 24 volts DC; "Z" = 110-120 volts AC, 50/60 Hz; e.g., D2778D3900W. For other voltages, consult ROSS.

Effective C_v varies with load and pressure drop. Consult ROSS for specifics on your system.



Dual, Solenoid Pilot Controlled, with Remote Trapped Pressure Relief