

Technical Information

Oxymax COS22/COS22D

Digital or analog sensor for the measurement of oxygen

Sensor with long-term stability for frequent sterilizations and autoclavability



Application

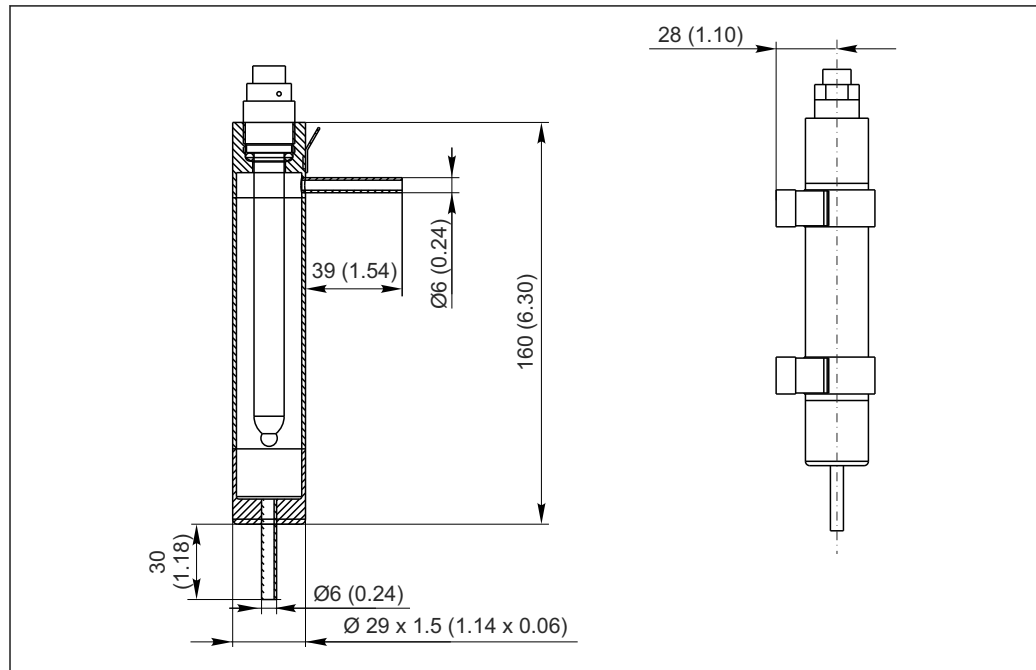
- Pharmaceuticals and biotechnology
 - Process control in enzyme production
 - Control of culture processing
- Beverage industry
- Chemical industry
- Water treatment
 - Boiler feedwater
 - WFI (water for injection)
- Inertization
- Residual oxygen measurement in processes

Your benefits

- Sensor version suitable for pharmaceutical industry:
 - Stainless steel 1.4435 (AISI 316L)
 - Sterilizable and autoclavable
- Application-specific versions:
 - Sensor for standard applications, e.g. for fermenter control
 - Trace sensor, e.g. for use in the power station sector and for the beverage industry (CO₂-compatible sensor)
- Very versatile:
 - Standard process connection Pg 13.5
 - Installation possible in standard pH assemblies
- Short response time: $t_{98} < 60$ s
- Integrated temperature sensor

Other advantages of Memosens technology

- Maximum process safety owing to non-contact, inductive signal transmission
- Data security thanks to digital data transmission
- Very easy to use as sensor data saved in the sensor
- Predictive maintenance possible as sensor load data logged in the sensor

Flow assembly for sensors
with $\varnothing 12$ mm (accessories)

10 Dimensions in mm (inch)

Weight	Depending on the design (length) 0.2 kg (0.44 lbs) to 0.7 kg (1.54 lbs)	
Materials	Parts in contact with medium	
	Sensor shaft (depending on the version)	Stainless steel 1.4435 (AISI 316L) Titanium Alloy C22
	Electrode combination	COS22/22D-*1/3: silver / platinum COS22D-*4: silver / gold
	Process seal	VITON (FDA-compliant)
	Process seal for ATEX/FM/CSA/NEPSI/TIIS	VITON (not FDA-compliant)
	Seals/O-rings	VITON (FDA-compliant)
	Membrane body, sealing ring for shaft sleeve	Perfluoroelastomer with USP88 Class VI
	Membrane	Silicone (FDA-compliant, in compliance with USP87/88 class VI), PTFE, steel mesh
Process connection	Pg 13.5	
Surface roughness	$R_a < 0.38 \mu\text{m}$	
Temperature sensor	NTC 22 k Ω	
Electrolyte	COS22/22D-*1 (standard sensor):	Slightly alkaline electrolyte
	COS22/22D-*3 (trace sensor):	Neutral electrolyte
	COS22D-*4 (trace sensor, gold):	Slightly alkaline electrolyte

Certificates and approvals

CE mark	Declaration of Conformity
	The product meets the requirements of the harmonized European standards. As such, it complies with the legal specifications of the EC directives. The manufacturer confirms successful testing of the product by affixing to it the CE mark.