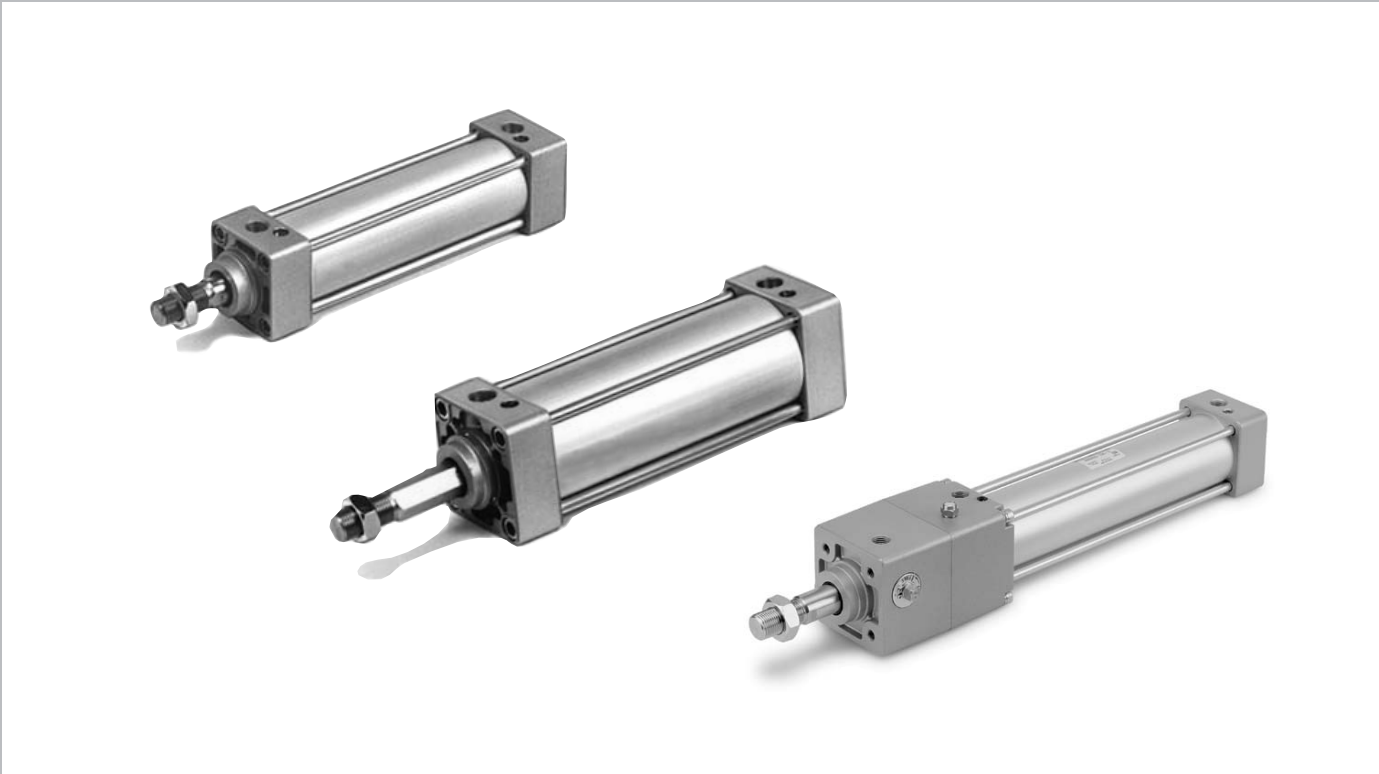




ISO/VDMA Cylinder Series C95




ø32, ø40, ø50, ø63, ø80, ø100

Conforming to ISO 6431/CETOP RP43P/VDMA 24562



CJ1
CJP
CJ2
CM2
CG1
MB
MB1
CA2
CS1
C76
C85
C95
CP95
NCM
NCA
D-
-X
20-
Data

Series Variations

Series	Action	Type		Basic	Standard variations		Option	Bore (mm)	Page
					Built-in magnet	Stainless steel rod			
Standard <i>Series C95</i> 	Double acting	Single rod	Non-lube	●	●	●	32, 40 50, 63 80, 100	6-12-2	
		Double rod	Non-lube	●	●	●			
Non-rotating Rod <i>Series C95K</i> 	Double acting	Single rod	Non-lube	●	●	(Standard)	32, 40 50, 63 80, 100	6-12-12	
		Double rod	Non-lube	●	●	(Standard)			
With Lock <i>Series C95N</i> 	Double acting	Single rod	Non-lube	●	●		32, 40 50, 63 80, 100	6-12-19	

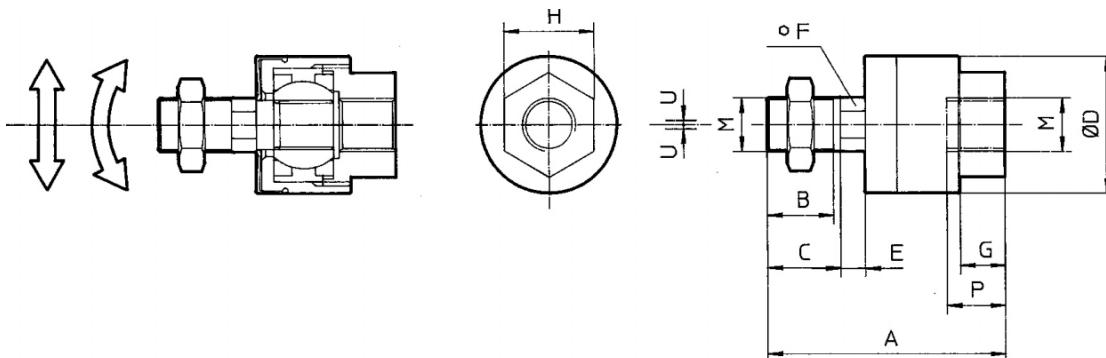
Dimensions: Piston Rod Mounting Accessory

[First angle projection]

Floating Joint JA

Steel

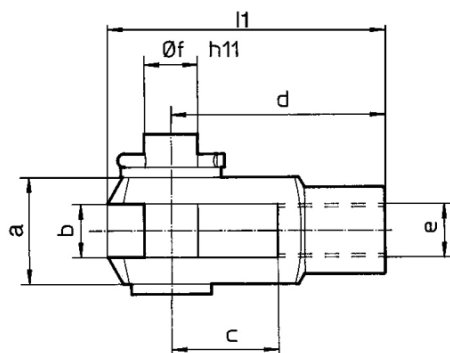
Bore size (mm)	M	Part no.	A	B	C	øD	E	F	G	H	P	U	Load (kN)	Weight (g)	Angle
32	M10 x 1.25	JA30-10-125	49.5	19.5	—	24	5	8	8	17	9	0.5	2.5	70	± 5°
40	M12 x 1.25	JA40-12-125	60	20	—	31	6	11	11	22	13	0.75	4.4	160	
50, 63	M16 x 1.5	JA50-16-150	71.5	22	—	41	7.5	14	13.5	27	15	1.0	11	300	
80, 100	M20 x 1.5	JAH50-20-150	101	28	31	59.5	11.5	24	16	32	18	2.0	18	1080	



Rod Clevis GKM (ISO 8140), Supplied with Bolt and Safety Device

Steel

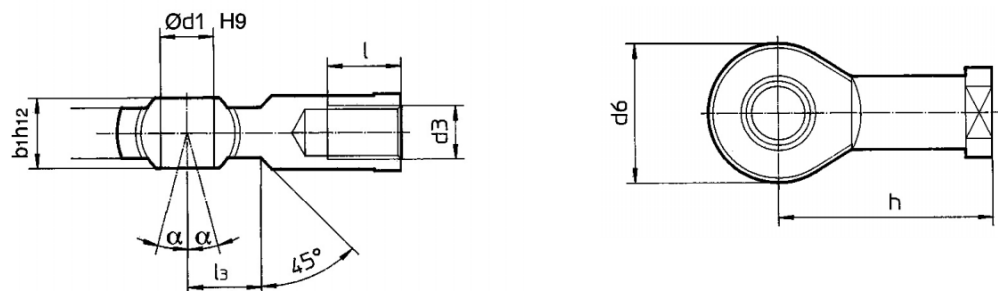
Bore size (mm)	e	Part no.	b	d	øf _{h11}	l ₁ max.	c min.	a min.
32	M10 x 1.25	GKM10-20	10 ^{+0.50 +0.15}	40	10	52	20	20
40	M12 x 1.25	GKM12-24	12 ^{+0.50 +0.15}	48	12	62	24	24
50, 63	M16 x 1.5	GKM16-32	16 ^{+0.50 +0.15}	64	16	83	32	32
80, 100	M20 x 1.5	GKM20-40	20 ^{+0.60 +0.15}	80	20	105	40	40



Piston Rod Ball Joint KJ (ISO 8139)

Steel

Bore size (mm)	d ₃	Part no.	ød _{1H9}	h	d ₆ max.	b _{1h12}	l min.	a	l ₃
32	M10 x 1.25	KJ10D	10	43	28	14	20	13°	14
40	M12 x 1.25	KJ12D	12	50	32	16	22	13°	16
50, 63	M16 x 1.5	KJ16D	16	64	42	21	28	15°	26
80, 100	M20 x 1.5	KJ20D	20	77	50	25	33	15°	26



CJ1

CJP

CJ2

CM2

CG1

MB

MB1

CA2

CS1

C76

C85

C95

CP95

NCM

NCA

D-

-X

20-

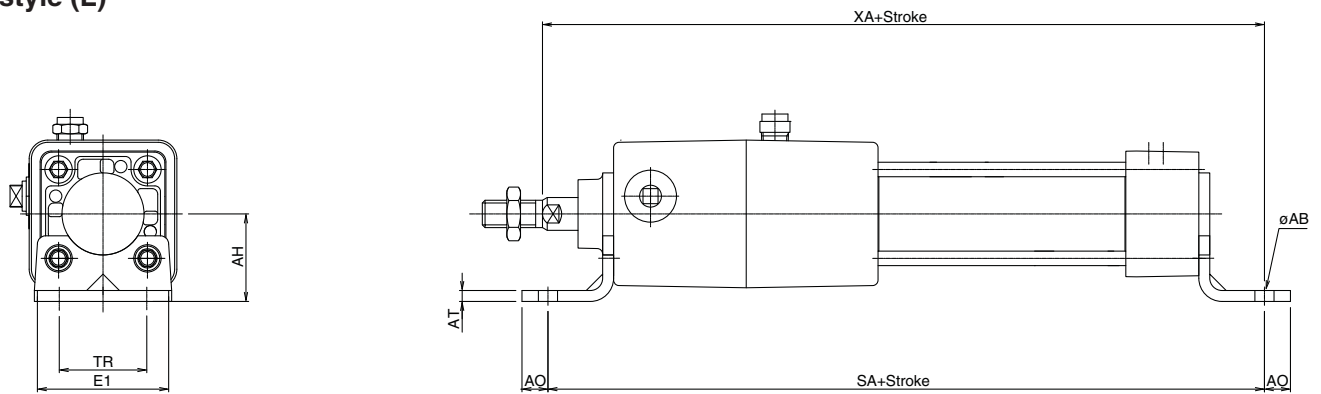
Data

Series C95N

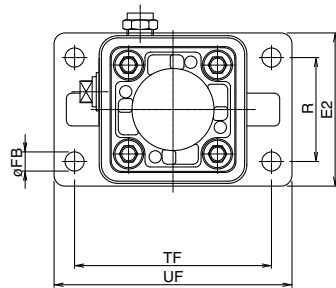
Dimensions: Cylinder Mounting Accessory

[First angle projection]

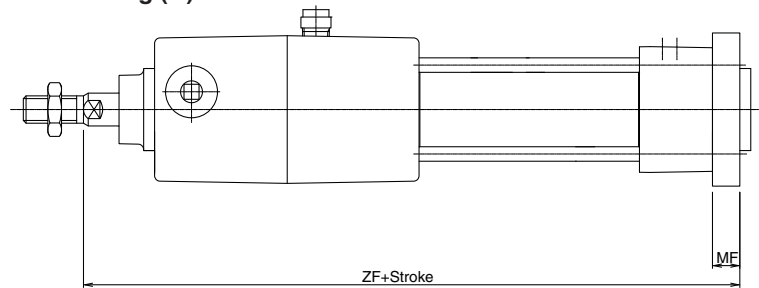
Foot style (L)



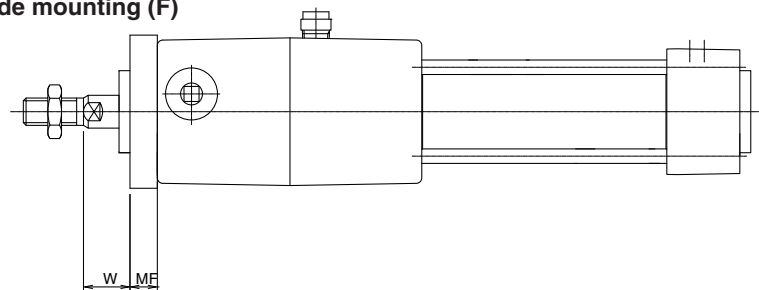
Flange style (F, G)



Head side mounting (G)

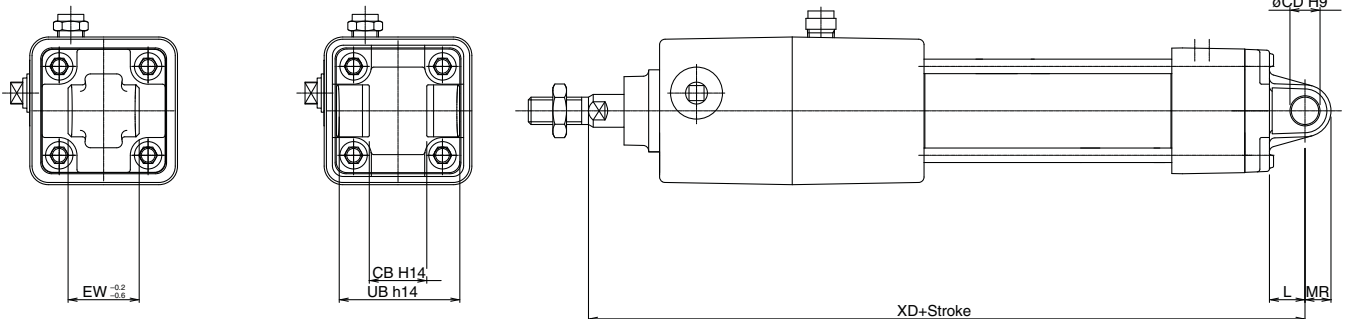


Rod side mounting (F)



Head side single clevis style (C)

Head side double clevis style (D)



Bore (mm)	E1	R	W	MF	ZF	øFB	øCD H9	EB	L	XD	UB h14	CB H14	EW ^{+0.2} / _{-0.6}	MR	TR	AO	AT	XA	SA	AH	øAB	TF	UF	E2
32	48	38	16	10	200	7	10	65	12	212	45	26	26	9.5	32	10	4.5	214	212	32	7	72	87	56
40	55	46	20	10	222	9	12	75	15	237	52	28	28	12	36	11	4.5	240	238	36	10	83	101	65
50	67	52	25	12	244	9	12	80	15	259	60	32	32	12	45	12	5.5	264	259	45	10	100	120	77
63	80	62	25	12	273	9	16	90	20	293	70	40	40	16	50	12	5.5	293	288	50	10	115	135	92
80	100	63	30	16	321	12	16	110	20	341	90	50	50	16	63	14	6.5	346	341	63	12	126	153	100
100	120	75	35	16	356	14	20	140	25	381	110	60	60	20	75	16	6.5	381	371	71	14.5	150	178	120