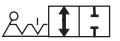




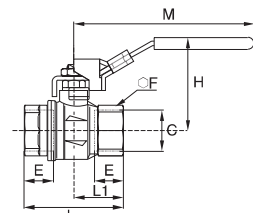
# Standard Series

## BVG4-LOCK

2/2 In-Line Lockable Ball Valve, Female BSPP Thread



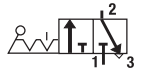
Sand-blasted nickel-plated brass,  
PTFE



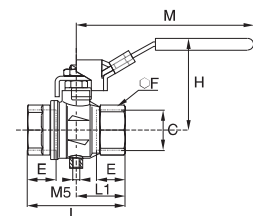
C	DN		E	F	H	L	L1	M	kg
G1/4	8	<a href="#">BVG4-1/4LOCK</a>	12	20	47.5	45	22.5	96	0.154
G3/8	10	<a href="#">BVG4-3/8LOCK</a>	12	20	47.5	45	22.5	96	0.171
G1/2	15	<a href="#">BVG4-1/2LOCK</a>	15.5	25	52	59	29.5	96	0.238
G3/4	20	<a href="#">BVG4-3/4LOCK</a>	17	31	59.5	64	32	117	0.370
G1	25	<a href="#">BVG4-1LOCK</a>	21	40	63.5	81	40.5	117	0.580

## BVG4P-LOCK

2/2 In-Line Lockable Vented Ball Valve, Female BSPP Thread



Sand-blasted nickel-plated brass,  
PTFE



C	DN		E	F	H	L	L1	M	kg
G1/4	8	<a href="#">BVG4P-1/4LOCK</a>	12	20	47.5	45	22.5	96	0.155
G3/8	10	<a href="#">BVG4P-3/8LOCK</a>	12	20	47.5	45	22.5	96	0.172
G1/2	15	<a href="#">BVG4P-1/2LOCK</a>	15.5	25	52	59	29.5	96	0.239
G3/4	20	<a href="#">BVG4P-3/4LOCK</a>	17	31	59.5	64	32	117	0.371
G1	25	<a href="#">BVG4P-1LOCK</a>	21	40	63.5	81	40.5	117	0.581