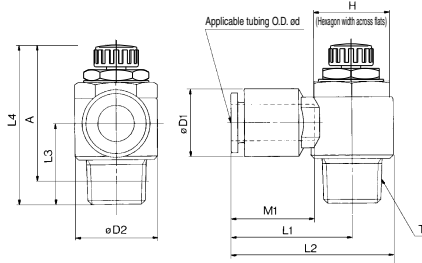


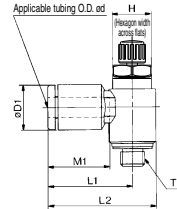
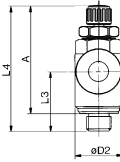
AS Series



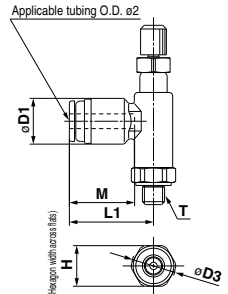
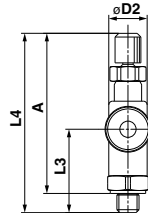
Elbow Type



M3 port
M5 port
U10/32 port



ø2 tubing type
AS12□1F-M3-02
AS12□1F-M5-02



Metric Size

Model	Applicable tubing O.D. (ø)	T	H (1)	D1	D2	L3	L1	L2	L4 (3)	A (2)		M1	Weight (g)		
										Max.	Min.				
AS12□1F-M3-02	M3 x 0.5	5.5	6	5.2	6	—	—	—	11	26.8	24.3	24.3	21.8	2.4	
AS12□1F-M5-02	M5 x 0.8	7	6	5.2	7.5	11.4	—	—	11.5	27.3	24.8	24.3	21.8	3	
AS12□1F-M3-23	M3 x 0.5	3.2	—	—	—	16.1	19.7	10	10.5	26.6	24.1	24	21.5	12.7	
AS12□1F-M3-04	M3 x 0.5	4	—	—	—	—	—	—	—	—	—	—	—	4	
AS12□1F-M5-23	M5 x 0.8	3.2	—	—	—	17.3	22.1	12.3	—	—	—	—	—	—	
AS12□1F-U10-32-23	10-32UNF	4	—	—	—	—	—	—	—	—	—	—	—	—	
AS12□1F-M5-04	M5 x 0.8	4	—	—	—	17.3	22.1	12.3	28.6	25.8	25	22.2	—	7	
AS12□1F-U10-32-04	10-32UNF	4	—	—	—	—	—	—	—	—	—	—	—	—	
AS12□1F-M5-06	M5 x 0.8	6	—	—	—	18.1	22.9	11.7	—	—	—	—	13.5	—	
AS12□1F-U10-32-06	10-32UNF	6	—	—	—	—	—	—	—	—	—	—	—	—	
AS22□1F-01-23	—	3.2	12	9.3	—	20.4	27.5	—	—	—	—	—	12.7	16	
AS22□1F-01-04	—	4	12	9.3	—	20.4	27.5	—	—	—	—	—	12.7	17	
AS22□1F-01-06	1/8	6	12	11.6	14.2	—	—	33.4	35.2	30.2	32.1	27.1	13.5	—	
AS22□1F-01-08	8	8	12	15.2	—	25.3	32.4	—	—	—	—	—	18.5	19	
AS22□1F-01-10	10	10	12	18.5	—	32.1	39.2	14.1	—	—	—	—	21	21	
AS22□1F-02-04	4	4	17	10.4	—	25.2	34.4	—	—	—	—	—	16	32	
AS22□1F-02-06	6	6	17	12.8	18.5	25.2	34.4	17.7	39.9	34.9	34.4	29.4	18.5	34	
AS22□1F-02-08	8	8	17	15.2	—	27.2	36.4	—	—	—	—	—	21	36	
AS22□1F-02-10	10	10	17	18.5	—	35.3	44.5	18.3	—	—	—	—	21	36	
AS22□1F-02-06	6	6	14	12.8	—	27.8	39.3	—	—	—	—	—	17	60	
AS32□1F-02-08	8	8	15.2	23	—	29.5	41	21.3	48.3	43.3	42.8	37.8	18.5	63	
AS32□1F-02-10	10	10	18.5	—	—	31.8	43.3	—	—	—	—	—	21	67	
AS32□1F-02-12	12	12	20.9	—	—	32.8	44.3	—	—	—	—	—	22	69	
AS32□1F-03-06	6	6	12.8	—	—	27.8	39.3	—	—	—	—	—	17	55	
AS32□1F-03-08	8	8	15.2	—	—	29.5	41	—	—	—	—	—	18.5	57	
AS32□1F-03-10	10	10	18.5	23	—	31.8	43.3	19.8	45.4	40.4	40.2	35.2	21	59	
AS32□1F-03-12	12	12	20.9	—	—	32.8	44.3	—	—	—	—	—	22	61	
AS42□1F-04-10	10	1/2	24	18.5	—	33.6	47.9	—	33.6	49.2	49.6	42.1	21	100	
AS42□1F-04-12	12	1/2	24	23.8	28.6	—	—	35.2	49.5	24.5	56.7	49.2	49.6	42.1	101

Note 1) () are the dimensions of NPT thread. Note 2) Reference thread dimensions after installation. Note 3) Reference dimensions

Inch Size

Model	Applicable tubing O.D. (ø)	T	H (1)	D1	D2	L3	L1	L2	L4 (3)	A (2)		M1	Weight (g)		
										Max.	Min.				
AS12□1F-M3-01	1/8"	M3 x 0.5	5.5	8.4	9.3	7.2	16.1	19.7	10.5	26.6	24.1	24	21.5	12.7	4
AS12□1F-M5-01	5/32"	M5 x 0.8	7	8.4	9.6	17.3	22.1	12.3	28.6	25.8	25	22.2	12.7	7	
AS12□1F-M3-02	1/8"	10-32UNF	8	8.4	9.6	17.3	22.1	12.3	28.6	25.8	25	22.2	12.7	7	
AS12□1F-M5-03	5/32"	M5 x 0.8	9.3	8.4	9.6	17.3	22.1	12.3	28.6	25.8	25	22.2	12.7	7	
AS12□1F-U10-32-03	5/32"	10-32UNF	9.3	8.4	9.6	17.3	22.1	12.3	28.6	25.8	25	22.2	12.7	7	
AS12□1F-M5-05	3/16"	M5 x 0.8	11.4	8.4	9.6	21.3	26.1	11.7	28.6	25.8	25	22.2	16.5	7	
AS12□1F-U10-32-05	3/16"	10-32UNF	11.4	8.4	9.6	21.3	26.1	11.7	28.6	25.8	25	22.2	16.5	7	
AS12□1F-M5-07	1/4"	M5 x 0.8	12	9.6	11.4	19.8	23.1	11.7	28.6	25.8	25	22.2	13.5	7	
AS12□1F-U10-32-07	1/4"	10-32UNF	12	9.6	11.4	19.8	23.1	11.7	28.6	25.8	25	22.2	13.5	7	
AS22□1F-01-01	1/8"	—	12	9.3	—	20.4	27.5	—	—	—	—	—	12.7	16	
AS22□1F-01-03	5/32"	—	12	9.3	—	20.4	27.5	—	—	—	—	—	12.7	17	
AS22□1F-01-05	3/16"	1/8	12	11.4	14.2	23.1	30.2	13.4	35.2	30.2	32.1	27.1	16.5	17	
AS22□1F-01-07	1/4"	—	12	15.2	—	23.9	31	—	—	—	—	—	18.5	19	
AS22□1F-01-09	5/16"	—	12	18.5	—	25.3	32.4	14.1	—	—	—	—	21	21	
AS22□1F-01-09	5/16"	—	17	10.4	—	25.2	34.4	—	—	—	—	—	16	32	
AS22□1F-02-03	5/32"	—	17	11.4	14.2	23.1	30.2	17.7	39.9	34.9	34.4	29.4	18.5	34	
AS22□1F-02-05	3/16"	—	17	13.2	18.5	25.2	34.5	—	—	—	—	—	17	32	
AS22□1F-02-07	1/4"	—	17	15.2	—	27.2	36.4	18.2	—	—	—	—	21	36	
AS22□1F-02-09	5/16"	—	17	18.5	—	35.3	44.5	18.8	—	—	—	—	21	36	
AS22□1F-02-11	3/8"	1/4	15.2	18.5	—	35.3	44.5	18.8	—	—	—	—	17	60	
AS22□1F-02-07	1/4"	—	13.2	27.8	—	39.3	—	—	—	—	—	—	17	60	
AS32□1F-02-09	5/16"	—	15.2	23	29.5	41	21.3	48.3	43.3	42.8	37.8	18.5	63		
AS32□1F-02-11	3/8"	—	17.9	31.8	—	43.3	—	—	—	—	—	—	21	67	
AS32□1F-03-07	1/4"	—	13.2	27.8	—	39.3	—	—	—	—	—	—	17	55	
AS32□1F-03-09	5/16"	3/8	15.2	23	29.5	41	19.8	45.4	40.4	40.2	35.2	18.5	57		
AS32□1F-03-11	3/8"	—	17.9	31.8	—	43.3	—	—	—	—	—	—	21	59	
AS42□1F-04-11	3/8"	1/2	24	17.9	—	33.6	47.9	—	33.6	49.2	49.6	42.1	21	100	
AS42□1F-04-13	1/2"	1/2	24	23.8	28.6	—	—	35.2	49.5	24.5	56.7	49.2	49.6	42.1	101

Note 1) () are the dimensions of NPT thread. Note 2) Reference thread dimensions after installation. Note 3) Reference dimensions