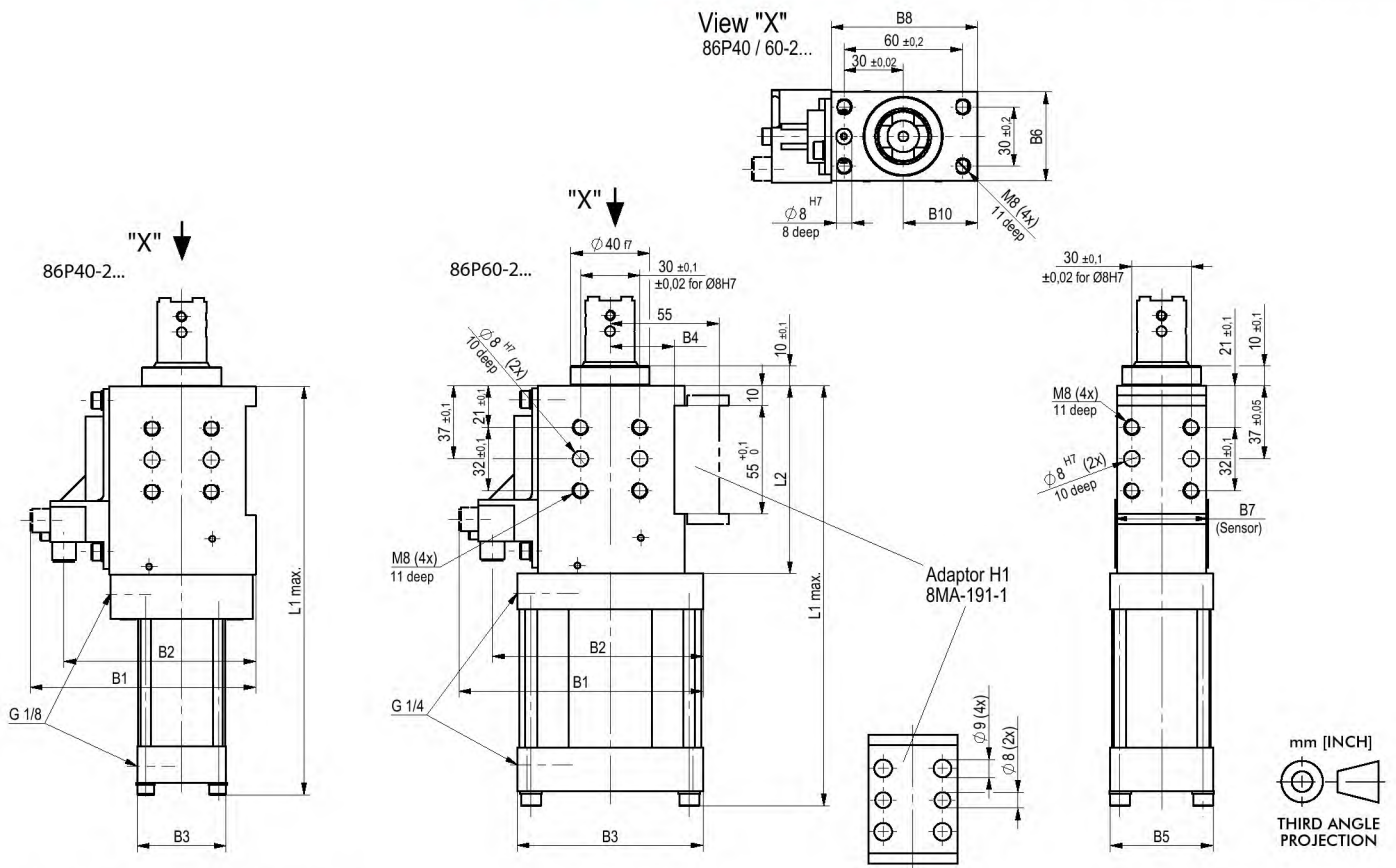


Series 86P40/60-2 Technical Information

Model no.		Pushing force at 5 bar N [lbs]	Retraction force at 5 bar N [lbs]	Max. operating pressure bar [psi]	Piston Ø mm [in]	Stroke +2 mm [in]	Weight Kg [lbs]	Air consumption per double stroke at 5 bar dm ³ [ft ³]
w/o sensing	with inductive sensing connector M12x1 w/ lead							
86P40-2...L4...	86P40-2..._8...	620 [139]	520 [117]	6 [87]	40 [1.57]	20 [0.79]	1,6 [3.52]	0,5 [0.02]
86P40-2...L4...	86P40-2..._8...	620 [139]	520 [117]	6 [87]	40 [1.57]	40 [1.57]	1,6 [3.52]	0,7 [0.02]
86P40-2...L6...	86P40-2..._8...	620 [139]	520 [117]	6 [87]	40 [1.57]	60 [2.36]	2,0 [4.84]	0,9 [0.04]
86P60-2...L4...	86P60-2..._8...	1550 [348]	1400 [315]	6 [87]	63 [2.48]	20 [0.79]	2,0 [4.40]	0,8 [0.02]
86P60-2...L4...	86P60-2..._8...	1550 [348]	1400 [315]	6 [87]	63 [2.48]	40 [1.57]	2,0 [4.40]	1,4 [0.05]
86P60-2...L6...	86P60-2..._8...	1550 [348]	1400 [315]	6 [87]	63 [2.48]	60 [2.36]	2,6 [5.72]	2,0 [0.08]

Series 86P40-2, 86P60-2 Standard Pin Package Dimensions



Medium: Operation with oil free air permissible

Model no.		B1	B2	B3	B4 + 0,02	B5	B6	B7	B8	B10	L1 max.	L2
w/o sensing	with inductive sensing connector M12x1 w/ lead											
86P40-2...L4...	86P40-2..._8...	114	97	45	32,5	45	45	47	74	37,5	207	95
86P40-2...L4...	86P40-2..._8...	114	97	45	32,5	45	45	47	74	37,5	207	95
86P40-2...L6...	86P40-2..._8...	114	97	45	32,5	45	45	47	74	37,5	247	115
86P60-2...L4...	86P60-2..._8...	124	107	94	32,5	52	45	47	74	37,5	213	95
86P60-2...L4...	86P60-2..._8...	124	107	94	32,5	52	45	47	74	37,5	213	95
86P60-2...L6...	86P60-2..._8...	124	107	94	32,5	52	45	47	74	37,5	253	115