

# Parker Heavy Duty Hydraulic Cylinders

## Series 2H

Exclusive with the Parker Stepped Cushion for increased performance and productivity

- Faster cycle time
- Reduced hydraulic shock
- Reduced machine noise
- Lower machine maintenance



- Heavy Duty Service – Industrial Tie-Rod Construction
- Nominal Pressure – 3000 PSI
- Standard Bore Sizes – 1-1/2" through 6"
- Piston Rod Diameters – 5/8" through 4"
- 18 Standard Mounting Styles

For Cylinder Division Plant Locations – See Page II.

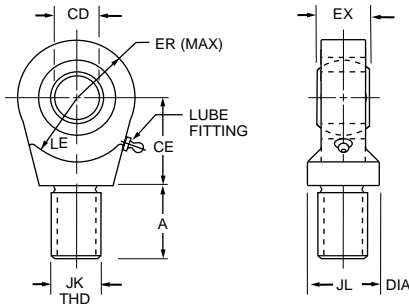
# Series 2H Heavy Duty Hydraulic Cylinders

## Cylinder Accessories Spherical Bearing Mounting Style SB

Parker offers a complete range of Cylinder Accessories to assure you of the greatest versatility in present or future cylinder applications. Accessories offered for the

respective cylinder include the Rod Eye, Pivot Pin and Clevis Bracket. To select the proper part number for any desired accessory refer to the charts below.

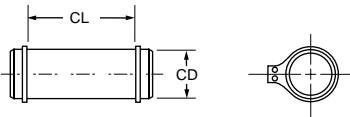
### Spherical Rod Eye



Bore Sizes	Series 2H	1 1/2	2 & 2 1/2	3 1/4	4	5	6
Rod Eye	Part No.	132290	132291	132292	132293	132294	132295
CD		.5000-.0005	.7500-.0005	1.0000-.0005	1.3750-.0005	1.7500-.0005	2.0000-.0005
A		1 1/16	1	1 1/2	2	2 1/8	2 7/8
CE		7/8	1 1/4	1 7/8	2 1/8	2 1/2	2 3/4
EX		7/16	2 1/32	7/8	1 3/16	1 17/32	1 3/4
ER		13/16	1 1/8	1 1/4	1 11/16	2 1/16	2 1/2
LE		3/4	1 1/16	1 7/16	1 7/8	2 1/8	2 1/2
JK		7/16-20	3/4-16	1-14	1 1/4-12	1 1/2-12	1 7/8-12
JL		7/8	1 5/16	1 1/2	2	2 1/4	2 3/4
LOAD CAPACITY LBS.		2644	9441	16860	28562	43005	70193

Order to fit Piston Rod Thread Size.

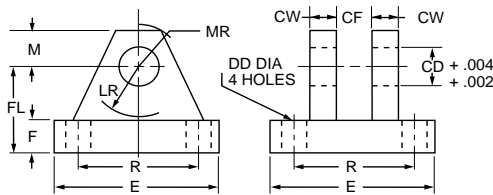
### Pivot Pin



Bore Sizes	Series 2H	1 1/2	2 & 2 1/2	3 1/4	4	5	6
Pivot Pin	Part No.	83962	83963	83964	83965	83966	83967
CD		.4997-.0004	.7497-.0005	.9997-.0005	1.3746-.0006	1.7496-.0006	1.9996-.0007
CL		1 9/16	2 1/32	2 1/2	3 5/16	4 7/32	4 15/16
SHEAR CAPACITY LBS.		8600	19300	34300	65000	105200	137400

Pivot Pins are furnished with (2) Retainer Rings.

### Clevis Bracket



Order to fit Mounting Plate or Rod Eye.

Bore Sizes	Series 2H	1 1/2	2 & 2 1/2	3 1/4	4	5	6
Clevis Bracket	Part No.	83947	83948	83949	83950	83951	83952
CD		1/2	3/4	1	1 3/8	1 3/4	2
CF		7/16	2 1/32	7/8	1 3/16	1 17/32	1 3/4
CW		1/2	5/8	3/4	1	1 1/4	1 1/2
DD		13/32	17/32	17/32	2 1/32	2 9/32	2 9/32
E		3	3 3/4	5 1/2	6 1/2	8 1/2	10 5/8
F		1/2	5/8	3/4	7/8	1 1/4	1 1/2
FL		1 1/2	2	2 1/2	3 1/2	4 1/2	5
LR		15/16	1 3/8	1 11/16	2 7/16	2 7/8	3 5/16
M		1/2	7/8	1	1 3/8	1 3/4	2
MR		5/8	1	1 3/16	1 5/8	2 1/16	2 3/8
R		2.05	2.76	4.10	4.95	6.58	7.92
LOAD CAPACITY LBS.		5770	9450	14300	20322	37800	50375

For Cylinder Division Plant Locations – See Page II.