

Expands Inspection Capabilities of Checker Vision Sensors

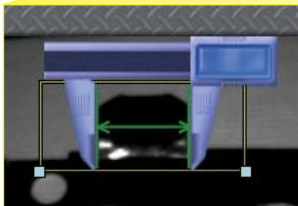
The Checker model 252 includes all inspection capabilities of the Checker vision sensor family, plus additional sensors that verify height, width, and diameter and deliver pass/fail results.

One-Click Setup™

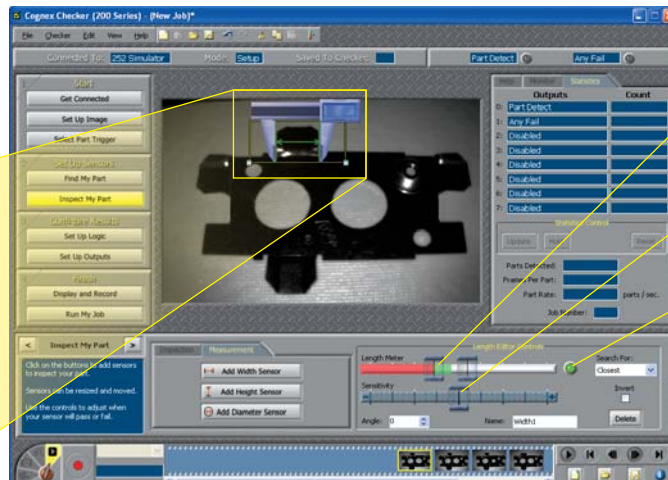
The model 252 brings measurement verification to a new level of simplicity. This is achieved through the use of an innovative Checker caliper on the application setup screen that appears with a single click. With the familiar look of a traditional vernier caliper, the Checker caliper automatically locks on the edges of the feature to be measured, sets the minimum and maximum thresholds, and learns edge polarity. This results in simple, yet reliable, pass/fail results.

Height and width sensors on the model 252 verify the distance between two parallel edges, while the diameter sensor verifies circle diameters.

Simply click near the center of the feature that you want to inspect, and the sensor is automatically placed. Checker also automatically locates the edges, sets min/max thresholds, and determines edge polarity. Users may also graphically move the caliper jaws to desired edge locations.



The Checker Caliper provides One-Click setup



Min/Max threshold sliders allow users to set the tolerance around a feature of a good part.

Sensitivity Slider for the detection of low-contrast edges.

Pass/fail results are provided simply and reliably.



Applications in Many Industries

The Checker 252 solves a wide array of measurement verification problems. Here are a few examples in two industries:

Automotive

- Detecting double feeds
- Verifying component thickness
- Checking weld thickness
- Verifying correct hole diameter

Packaging

- Checking safety tabs
- Inspecting for out of round parts
- Verifying glue bead thickness

Advantages

- **Height, width, and diameter sensors** add simple pass/fail measurement verification to the Checker vision sensor family, for expanded applications
- **One-Click Setup** uses the screen caliper to define startup parameters. User may also graphically move the caliper jaws to the desired edge locations
- **Low-contrast edges** are easily identified, for flexibility of edge selection

CHECKER 252 VISION SENSOR

LIGHTING

Illumination White LED

EXTERNAL TRIGGER INPUT

Input ON > 10VDC (> 6mA)
 Input OFF < 2VDC (< 1.5mA)
 Protection Opto-isolated, polarity-independent

OUTPUTS

Output Solid state switch
 Rating 100mA, 24VDC
 Max voltage drop 3.5VDC @ 100mA
 Max load 100mA
 Protection Opto-isolated, protected from short circuit, overcurrent, and reverse polarity

ENCODER INPUTS

Encoder type 300 kHz (max) quadrature encoder.
 Open collector and differential output
 ON/OFF 50% nominal
 Load 50% encoder maximum

TERMINATION

12-Pin M12 connector, USB Mini-B receptacle

POWER

Voltage +24VDC (22-26VDC)
 Current 250mA max

MECHANICAL

Dimensions 67mm (2.64in) H x 41mm (1.61in) W
 x 60mm (2.36in) D
 Weight 100g (3.5oz)

MODES OF OPERATION

Internal part trigger, external part trigger, free running

ENVIRONMENTAL

Operating temperature 0° to 50°C (32° to 122°F)
 Storage temperature -30° to 80°C (-22° to 176°F)
 Operating humidity 0%-90%, non-condensing
 Operating altitude 4000m maximum
 Shock 80Gs for 5ms on each axis
 (per IEC 68-2-2)
 Vibration 10Gs (10-500Hz) per IEC 68-2-6
 Protection IP67

CERTIFICATIONS

CE, cCSAus, FCC, RoHS

MINIMUM PC REQUIREMENTS (Only required for setup)

Operating systems	Microsoft® Windows® Vista™, XP™, or 2000™ SP4
RAM	128 MB RAM
USB	USB 1.1 (2.0 recommended for best performance)
Screen resolution	1024 x 768 (96 DPI) or 1280 x 1024 (120 DPI) display

PART NUMBERS

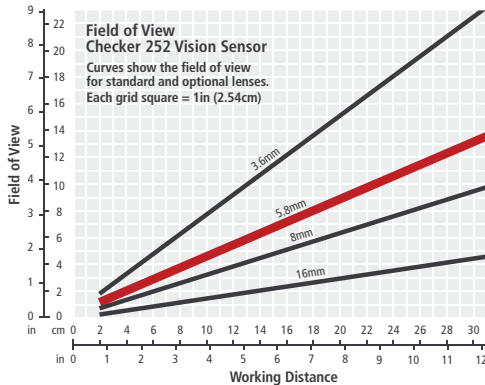
Part Number	I/O Cable Included
CKR-252-001	Flying Leads
CKR-252-002	I/O Box

Included accessories

- 5.8mm lens
- Standard USB cable
- Quick Start Guide
- Allen wrench (for focus lock)
- Checker software CD
- USB connector cover
- Mounting screws

Optional Accessories

CKR-200-IOBOX-002	Checker I/O box
CKR-200-BKT	Adjustable bracket
CKR-200-LENSKIT	Lens Kit
CKR-200-CBL-USB	IP67 USB cable
CKR-200-CBL-EXT	I/O extension cable (5m)
CKR-200-CBL-RT-003	Right-angle cable (1m)
SV-350-000	SensorView™ 350 panel-mount display



For more information, please visit www.cognex.com/checker252

Corporate Headquarters

Cognex Corporation
 One Vision Drive
 Natick
 MA 01760-2059
 USA
 Tel: 508-650-3000
 Fax: 508-650-3344

www.cognex.com

United States

Natick, Massachusetts 508-650-3000
 Nashville, Tennessee 615-844-6158
 Detroit, Michigan 248-668-5100
 Chicago, Illinois 630-649-6300
 Mountain View, California 650-969-4812

Latin America

Monterrey, Mexico +52 81 5030-7258
 Mexico City, Mexico +52 55 2789-7839

Europe

Austria +43 (0)1 23060 3430
 France +33 1 4777 1550
 Germany +49 721 6639 0
 Ireland +353 1 825 4420
 Italy +39 02 6747 1200
 Netherlands +31 402 668 565
 Spain +34 93 445 67 78
 Sweden +46 21 14 55 88
 Switzerland +41 71 313 06 05
 United Kingdom +44 1908 206 000

Asia

China +86 21 6320 3821
 India +91 80 4022 4118
 Korea +82 2 539 9047
 Singapore +65 632 55 700
 Taiwan +886 3 578 0060

Canada

905-634-2726

Japan

+81 3 5977 5400