

8070/1-2-S Art. No. 131828



- Interchangeable contact element with snap-action contact, slow-action contact or overlapping slow-action contact
- Various actuators possible, all of which can be repositioned by 4 x 90°
- Suitable for safety circuits in accordance with IEC/EN 60947-5-1, category 1 safety position switch, dimensions and characteristics in accordance with EN 50041

WebCode **8070A**



R. STAHL's 8070 series position switches are suitable for switching control and signal circuits and for safety circuits in accordance with EN 60947-5-1 in "increased safety" enclosures. The dimensions comply with EN 50047. They are able to switch different potentials, comprise an interchangeable Ex d contact element with positive-opening contacts, and are available with a variety of actuators.

Technical Data

Explosion Protection

Application range (zones)	1 2 21 22
Certificate IECEX Gas	IECEX PTB 06.0092
Certificate ATEX Gas	PTB 01 ATEX 1053
Certificate IECEX Dust	IECEX PTB 06.0092
Certificate ATEX Dust	PTB 01 ATEX 1053
Gas explosion protection IECEX	Ex de IIC T6
Gas explosion protection ATEX	⊕ II 2 G Ex de IIC T6
Dust explosion protection IECEX	Ex tD A21 T80 °C
Dust explosion protection ATEX	⊕ II 2 D Ex tD A21 T80 °C
Certificates	Canada (CSA), EAC (STV), IECEX (PTB)

Electrical Data

DC rated operational voltage	250 V
AC oper vol. (equal potential)	500 V
AC op vol. (unequal potential)	250 V
Rated operational current	10 A
Electrical service life	1 operating cycles
Mechanical service life	≥ 1 x 10 ⁶ operating cycles
Outdoor range	0 m
Data rate	0 kbit/s
Channel bandwidth	0 kHz
Actuating time	0
Rated surge voltage	0 kV
Short-circuit protection, max.	10 A
Tripping characteristic	gG

8070/1-2-S Art. No. 131828

Electrical Data

Switching function Snap-action contact, With spring

Ambient Conditions

Min. ambient temperature -20 °C
 Max. ambient temperature +50 °C
 Ambient temperature -20 °C ... +50 °C

Mechanical Data

Degree of protection (IP) IP65
 Enclosure material Polyamide, Glass fibre reinforced
 Contact material Silver-nickel
 Max. clamping range 13 mm
 Min. clamping range 4 mm
 Terminals 1 x 2.5 mm² or 2 x 1 mm²
 Number of NCs 1
 Number of NOs 1
 Actuator Domed plunger
 Type of connection cable Solid
 Finely stranded
 Contacts 1 NC + 1 NO
 Service life, min. 1 operating cycles
 Enclosure colour Black
 Packaging unit 1
 Weight 0.219 kg

Components

Actuator 3 Plunger (stainless steel)
 Cable entry 1 x M20 x 1.5

Technical Drawings

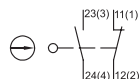
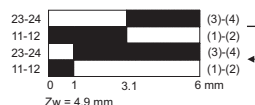


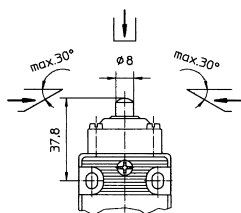
Diagram with positive opening



In stroke direction

Nominal contact travels or angles:

- = Contact closed
- = Contact open
- Zw = Travel for positive opening

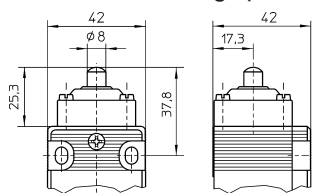


Extended plunger
 Lateral operation: V = 0.5 m/s
 Operation in stroke direction: V = 0.5 m/s

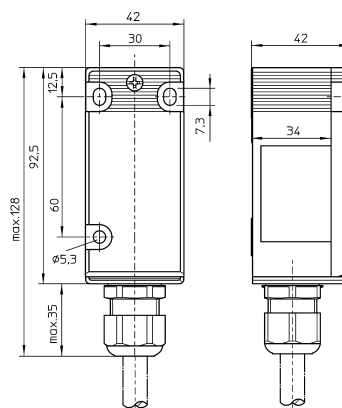
V = max. operation speed
 → = direction of operation

8070/1-2-S Art. No. 131828

Dimensional Drawings (All Dimensions in mm [inches]) – Subject to Alterations

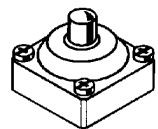



Extended plunger



Position switch without insert

Accessories and Spare Parts

Actuator		Art. No.
	Extended plunger 8070/1-0-S	131805
Cable gland		Art. No.
	8161/7-M20-1304 4 ... 13 mm ² , 50 pieces (delivery lot ¹⁾)	239156

We reserve the right to make alterations to the technical data, dimensions, weights, designs and products available without notice. The illustrations cannot be considered binding.