

## Pilot Light Devices



Transformer Type Pilot Light  
Cat. No. 800H-PP16M



Push-to-test Pilot Light  
Cat. No. 800H-PPT16M



Pigtail Pilot Light  
Cat. No. 800H-LP24M

800    H    -    PP    T    \_\_\_\_\_    16    M  
                  a                    b                    c                    d                    e                    f

a	
Barrel Type	
Code	Description
H	Standard barrel
HL	Long barrel

b	
Power Module Type	
Code	Description
PP	Transformer (or dual-input)
QP	Full voltage/Universal
LP	Pigtail — full voltage <sup>(1)</sup>
LPK	Pigtail — full voltage <sup>(1)</sup> (for dual push buttons)

c	
Lamp Test Options	
Code	Description
Blank	No test option
T	Push-to-test
D	Dual-input — diode <sup>(2)</sup>
DT	Dual-input — transformer relay <sup>(2)</sup>

d	
Illumination Option	
Code	Description
Blank	Incandescent
H	LED <sup>(3)</sup>

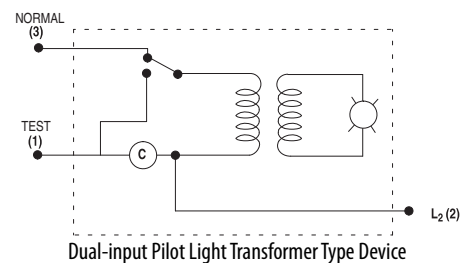
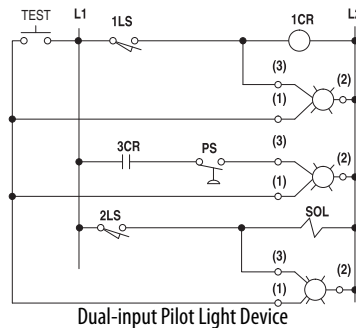
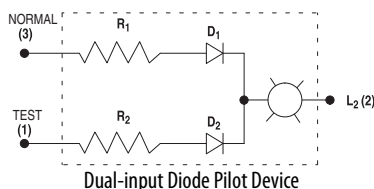
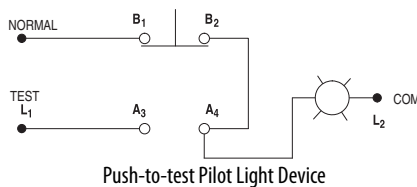
e	
Voltage	
Code	Description
Transformer	
16	120V AC, 50/60 Hz
26	240V AC, 50/60 Hz
46	480V AC, 50/60 Hz
56	600V AC, 50/60 Hz
Full Voltage — Incandescent	
24	24V AC/DC
10	120V AC/DC
20	240V AC/DC

e, continued	
Voltage	
Code	Description
Universal — LED	
2	12...130V AC/DC
Dual-input	
16	120V AC
24	24V AC/DC <sup>(5)</sup>
Pigtail	
24	24V AC/DC
10	120V AC/DC
20	240V AC/DC

f	
Lens Color	
Code	Description
Blank	No lens with no contacts
M	Multi-color <sup>(4)</sup>

- (1) Lamp test option is not available with pigtail.
- (2) Only available with power module type code PP (Table b).
- (3) LED illumination option is not available with diode-type dual-input lamp test options.
- (4) Multi-color insert packet includes amber, blue, green, red, and white.
- (5) Dual-input diode only.

### Typical Pilot Light Wiring Diagrams



**IMPORTANT** See applicable codes and laws.

