



# 22 mm Push Button Specifications

Bulletin Numbers 598, 800B, 800F, 800FC, 800FD, 800MB, 800MR

Topic	Page
<b>Bulletin 800F 22.5 mm Push Buttons</b>	<b>3</b>
Specifications	3
Momentary Push Button Operators	7
Alternate Action Operators	10
Pilot Light Operators	11
Selector Switch Operators	12
Key-operated Selector Switches	17
Push-pull Operators	20
Momentary Mushroom Push Buttons	25
Momentary Multi-operator	27
Reset Operators	31
Threaded Reset Rod Reset Operators	31
Single-turn Potentiometer Assembly	32
Key-operated Selector Switch – SensEject	33
Selector Push Button Operators	34
Toggle Switch Operators	35
Back-of-panel Components	36
Plastic and Metal Enclosures	41
Assembled Stations	42
Pendant Stations	45
Accessories	48
Legend Plates/Caps	55
Assembled Station Pin Out Chart	64
<b>Bulletin 598 General-purpose Push Button Enclosures</b>	<b>65</b>
<b>Bulletin 800FC 22.5 mm Configured Pendant Stations</b>	<b>68</b>
Operator Mounting and Sequence	68
Enclosures	68
1-, 2-, and 3-speed Operators	69
800F Selector Switch Operators – Maintained and Non-illuminated	70
800F Multi Operators and Caps – Extended	71
800F Pilot Lights – Monolithic	72
1-, 2-, and 3-speed Contact Block Assemblies	72
800F Potentiometer Operators	72
800F Hole Plug	72
Configured Pendant Stations	73
Accessories	75
Specifications	77
Approximate Dimensions	80
Custom Text Fax/Scan Sheet	81

Topic	Page
<b>Bulletin 800FD 22.5 mm Monolithic Push Buttons</b>	<b>82</b>
Momentary Push Button Operators, Non-illuminated	82
Pilot Light Devices	83
Selector Switch Operators	84
Push-pull/Twist-to-release Mushroom Operators	85
Plastic Enclosures – 1-hole Only	85
Assembled Stations	86
Replacement Parts	86
Specifications	87
Approximate Dimensions	88
Instruction Sheet	89
<b>Bulletin 800B 16 mm Push Buttons</b>	<b>90</b>
Push Button and Pilot Light Operators	90
Lens Cap with Diffuser	90
Selector Switch Operators	91
Emergency Stop Operators	91
Contact Block/Latch Module	92
Replacement Parts and Accessories	92
Specifications	94
Operator Assembly Sequence	95
Approximate Dimensions	96
<b>Bulletin 800MR/MB Oiltight Operators</b>	<b>98</b>
Momentary Contact Push Buttons – 800MR	98
Push-pull and Push-pull/Twist-to-release Units – 800MR	100
Selector Switch Units – 800MR	102
Potentiometer Operator Only – 800MR	107
Pilot Light Units – 800MR	107
Wobble Stick Units – 800MR	108
Momentary Contact Push Button Units – 800MB	108
Dual Operator, Non-illuminated – 800MB	110
Pilot Light Units – 800MB	111
Accessories – Bulletin 800MB/MR	112
Legend Plates – 800MB/MR	116
Specifications	118
Approximate Dimensions – 800MB/MR	119

## 2-position, Illuminated – Twist-to-release / Push-pull (Trigger Action)

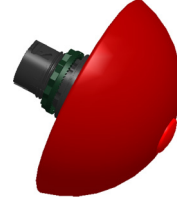
- IMPORTANT**
- LED module is required for illumination.
  - All emergency stop operators are EN ISO 13850 compliant with standard N.C., N.C.L.B., or self-monitoring contact blocks.
  - E-stop operators, latch, and contact block combinations have been third-party tested for B10d values. B10d values can be found in publication [SAFETY-SR001](#).



40 mm Illuminated  
Twist-to-release  
Cat. No. 800FP-LMT44



40 mm Mushroom Push-pull  
Cat. No. 800FM-LMP44



90 mm Half-dome  
Cat. No. 800FP-LMP94

Color	Package Quantity	40 mm Mushroom (Trigger Action) Twist-to-release		40 mm Mushroom (Trigger Action) Push-Pull	
		Plastic	Metal	Plastic	Metal
		Cat. No.	Cat. No.	Cat. No.	Cat. No.
Red	1	800FP-LMT44	800FM-LMT44	800FP-LMP44	800FM-LMP44

800F    P    -    LMP4    3  
          a            b            c

a	
Operator Construction	
Code	Description
P	Round plastic operator (IP69K; IP66, Type 4/4X/13)
M	Round metal operator (IP66, Type 4/13)

b	
Operator Type	
Push, Twist-to-release <sup>(1)</sup> <sup>(2)</sup>	
Code	Type
LMT4	40 mm color cap
LMT6	60 mm color cap
Push-pull <sup>(3)</sup>	
LMP3	30 mm color cap
LMP4	40 mm color cap
LMP6	60 mm color cap
Half-dome Push-pull <sup>(3)</sup>	
LMP9	90 mm color cap <sup>(4)</sup>

c	
Lens Cap Color	
Code	Color
3	Green
4	Red
5	Yellow <sup>(5)</sup>
6	Blue <sup>(5)</sup> <sup>(6)</sup>

- (1) Only available with red color cap.  
 (2) 60 mm version has black arrows; 30 and 40 mm versions have white arrows.  
 (3) Limit of four contact blocks max. for these devices.  
 (4) Half-dome operators only available with red and yellow lens cap colors.  
 (5) Use of a white LED is recommended.  
 (6) Only available with 40 mm Push-Pull color cap (Code LMP4 from Table [b](#)).

## 800F Two-position Twist-to-release and Twist-to-release/Push-pull Operators



Description	Operator Cat. No.	Guard Cat. No.
Twist-to-release – Red	800FP-MT44PX01	–
Twist-to-release – Red, illuminated	800FP-LMT44PNxRX01 <sup>(1)</sup>	–
Keyed twist-to-release – Red	800FP-MK44PX01	–
Twist-to-release or push-pull – Red, monolithic	800FD-MT44X01	–
Twist-to-release or push-pull – Red, monolithic with guard, monolithic	800FD-MT44X01	800F-AMEGY

(1) Replace the x with a 3 for 24V AC/DC or 5 for 120V AC.

## 800F Push Button Operators and Caps – Extended and Non-illuminated



**IMPORTANT** Mechanical interlock is not allowed.

Cap Color	Description	Symbol Definition	Operator Cat. No.	Cap Cat. No.	Complete Operator Cat. No.	Composite Cat. No./ No Electrical Interlock <sup>(1)</sup>	Composite Cat. No./ Electrical Interlock <sup>(1)</sup>
Black	Blank	–	800FP-E2	–	–	800FP-E2PX10	800FP-E2PX11
	LEFT or DOWN	Single arrow 0°	800FP-E9	800F-AE208	800FP-E208	800FP-E208PX10	800FP-E208PX11
	REVERSE	Single arrow 45°		800F-AE2CU244	800FP-E2U244	800FP-E2U244PX10	800FP-E2U244PX11
	LEFT FAST or DOWN FAST	Double arrow 0°		800F-AE2CU261	800FP-E2U261	800FP-E2U261PX10	800FP-E2U261PX11
	REVERSE FAST	Double arrow 45°		800F-AE2CU264	800FP-E2U264	800FP-E2U264PX10	800FP-E2U264PX11
White	Blank	–	800FP-E1	–	–	800FP-E1PX10	800FP-E1PX11
	UP or RIGHT	Single arrow 0°	800FP-E9	800F-AE108	800FP-E108	800FP-E108PX10	800FP-E108PX11
	FORWARD	Single arrow 45°		800F-AE1CU244	800FP-E1U244	800FP-E1U244PX10	800FP-E1U244PX11
	UP FAST or RIGHT FAST	Double arrow 0°		800F-AE1CU261	800FP-E1U261	800FP-E1U261PX10	800FP-E1U261PX11
	FORWARD FAST	Double arrow 45°		800F-AE1CU264	800FP-E1U264	800FP-E1U264PX10	800FP-E1U264PX11
Green	Blank	–	800FP-E3	–	–	800FP-E3PX10	–
	START/ALARM	Start/Alarm	800FP-E9	800F-AE3CU222	800FP-E3U222	800FP-E3U222PX10	–
	START	Start symbol	–	800F-AE3CU909	800FP-E3U909	800FP-E3U909PX10	–
Red	Blank	–	800FP-E4	–	–	800FP-E4PX10	–
	STOP	Stop symbol	800FP-E9	800F-AE405	800FP-E405	800FP-E405PX10	–
Yellow	Blank	–	800FP-E5	–	–	800FP-E5PX10	–
	ALARM	Alarm	800FP-E9	800F-AE5CU223	800FP-E5U223	800FP-E5U223PX10	–
Blue	Blank	–	800FP-E6	–	–	800FP-E6PX10	–
	R	Reset symbol	800FP-E9	800F-AE611	800FP-E611	800FP-E611PX10	–

(1) For 24V AC/DC units, add V for low-voltage contact blocks. Example: Cat. No. 800FP-E5PX10 becomes Cat. No. 800FP-E5PX10V.

## 800F Push Button Operators – Extended and Illuminated



**IMPORTANT** Mechanical interlock is not allowed.

Lens Color	Operator Cat. No.	Composite Cat. No. <sup>(1)</sup>
Green	800FP-LE3	800FP-LE3PNxGX10
Red	800FP-LE4	800FP-LE4PNxRX10
Yellow	800FP-LE5	800FP-LE5PNxWX10
Blue	800FP-LE6	800FP-LE6PNxBX10
Clear	800FP-LE7	800FP-LE7PNxWX10

(1) Replace the x with a 3 for 24V AC/DC or 5 for 120V AC.

## 800F Selector Switch Operators – Maintained and Non-illuminated



Positions	Keyed	Operator Cat. No.	Composite Cat. No. <sup>(1)</sup>
2	No	800FP-SM22	800FP-SM22PX11
	Yes	800FP-KM21	800FP-KM21PX11
3	No	800FP-SM32	800FP-SM32PX20
	Yes	800FP-KM34	800FP-KM34PX20

(1) For 24V AC/DC units, add V for low-voltage contact blocks. Example: Cat. No. 800FP-E5PX10 becomes Cat. No. 800FP-E5PX10V.