

LANDA[®] SEA

OPERATOR'S MANUAL

■ SEA3-1100

■ SEA4-2000

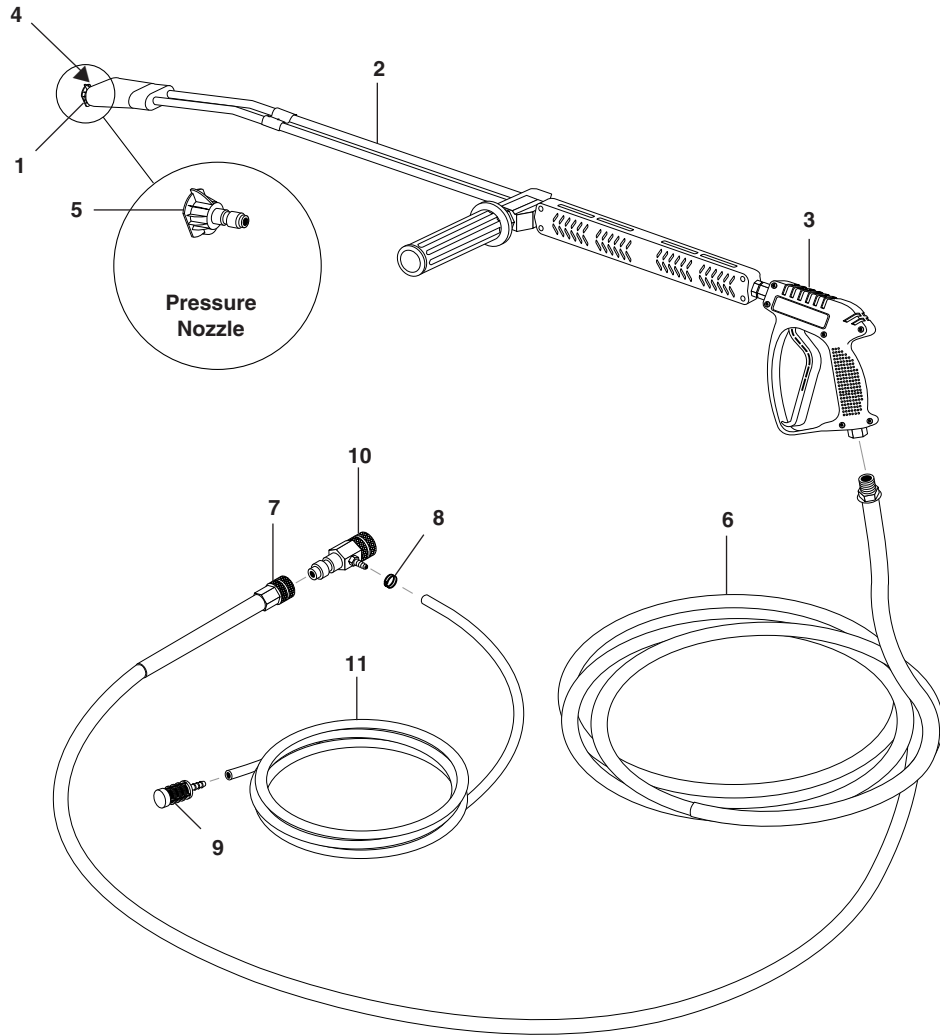
■ SEA4-3000



For technical assistance or the dealer nearest you,
consult our web page at www.landa.com

8.913-999.0

HOSE AND SPRAY GUN ASSEMBLY



HOSE AND SPRAY GUN PARTS LIST

| ITEM | PART NO. | DESCRIPTION | QTY | ITEM | PART NO. | DESCRIPTION | QTY |
|------|--------------------------------|---|-----|------|-------------|-------------------------------------|-------|
| 1 | 9.802-165.0 | Coupler, 1/4" Male | 1 | 7 | 9.802-166.0 | Coupler, 3/8", Female | 1 |
| | 9.802-096.0 | ▲ Quick Coupler, O-Ring, Sm. | 1 | | 9.802-100.0 | ▲ Quick Coupler, O-Ring Lg. | 1 |
| 2 | 8.711-293.0 | Wand, VP Zinc 1/4", AL 344 w/coupler, w/soap nozzle | 1 | 8 | 6.390-126.0 | Clamp, Hose, .46-, .54 ST | 1 |
| | 83-SSVPKIT | Repair Kit, AR Stainless Seat | 1 | 9 | 8.707-057.0 | Strainer, 1/4" Hose Barb | 1 |
| 3 | 8.751-234.0 | Gun, Landa, L1050, 5000 PSI, 10.4 GPM | 1 | 10 | 9.802-216.0 | Injector, Detergent, Non Adjust, #3 | 1 |
| 4 | 9.802-286.0 | Soap Nozzle Only, 1/8", Brass | 1 | 11 | 9.802-251.0 | Tube, 1/4" x 1/2", Clear Vinyl | 6 ft. |
| 5 | See Pg. 11 for Correct Nozzles | | 1 | | | ▲ Not Shown | |
| 6 | 8.739-072.0 | Hose, 3/8" x 50', 2-Wire Tuff Skin | 1 | | | | |