

GIRONDE



REF 79.1.672

SAFETY KNIFE FOR DEBURRING AND CUTTING

Ideal for deburring windshields and laminated glass.

Also used to prepare the edges and groove the cardboard boxes.

SAFETY • The blade fully retracts into the handle.



DELIVERED WITH A LONG TOOTHED BLADE



LIGHT



FOR RIGHT & LEFT HANDED USERS



ERGONOMIC



AVOIDS MSD's



RESISTANT TO DETERGENTS



TECHNICAL SHEET

2 PURPOSES: DEBURRING WINDSHIELDS & CARDBOARD WORK

MANUALLY RETRACTABLE BLADE.

THE BLADE CUT OVER A LONG LENGTH AND CAN BE USED ALL THE WAY TO OPTIMIZE LIFETIME

CLIPS WITH ZICOU



THE EDGE ALLOWS TO GROOVE THE CARDBOARD BOXES INSIDE

GUIDE TOOL FOR THE CARDBOARD HOLES AND FOR POSITIONING ON THE WINDSHIELDS

NON-SLIP STRIATED CURSOR

THE PROS



DELIVERED WITH A LONG TOOTHED BLADE
REF 672.5.2



LIGHT AND VERY RESISTANT



FIBERGLASS BASED

FUNCTIONS

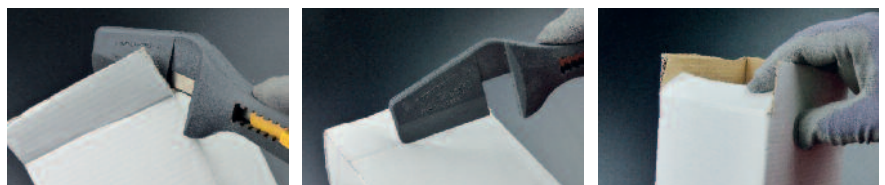


For cutting single-groove
cardboards



For cutting thick plastic
films, PVB

RESIZE THE CARDBOARDS THANKS TO THE VERY RESISTANT HEAD OF THE KNIFE
SPECIALLY DESIGNED TO GROOVE THE CARTON BEFORE FOLDING

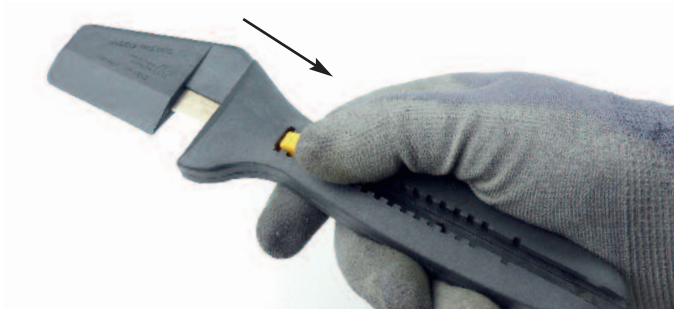


TECHNICAL CHARACTERISTICS

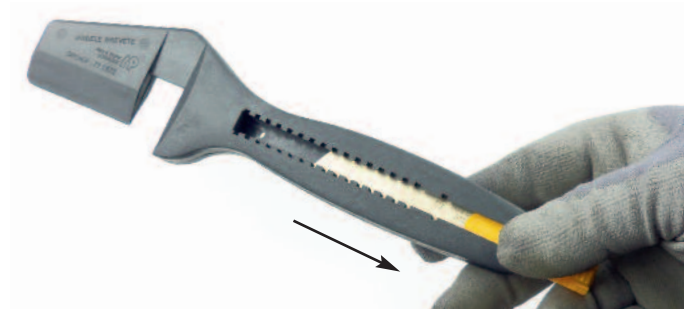
- Ergonomic and light.
- Easy blade change.
- The blade cut over a long length and can be used all the way to optimize lifetime.
- Enable to resize the cardboards.
- High cutting precision.
- Detergents and acetone resistant.

BLADE CHANGE

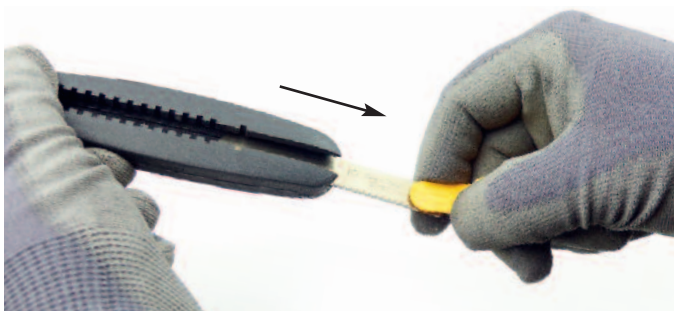
01/Pull the cursor.



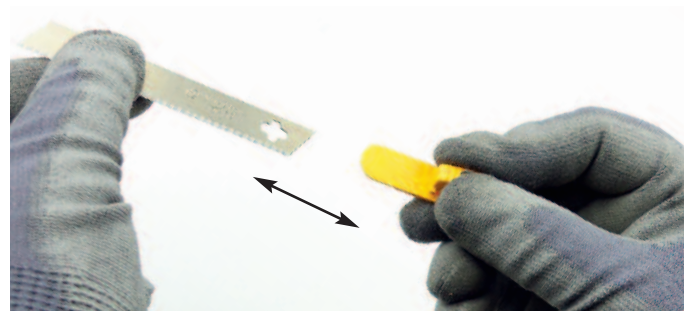
02/Move the cursor to the rear exit of the knife.



03/Release the blade and the cursor from the body of the knife.



04/Be careful with the new blade and do the opposite.



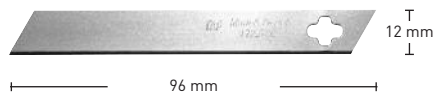
BLADES

DELIVERED WITH



REF 672.5.2
Blade made of premium quality steel

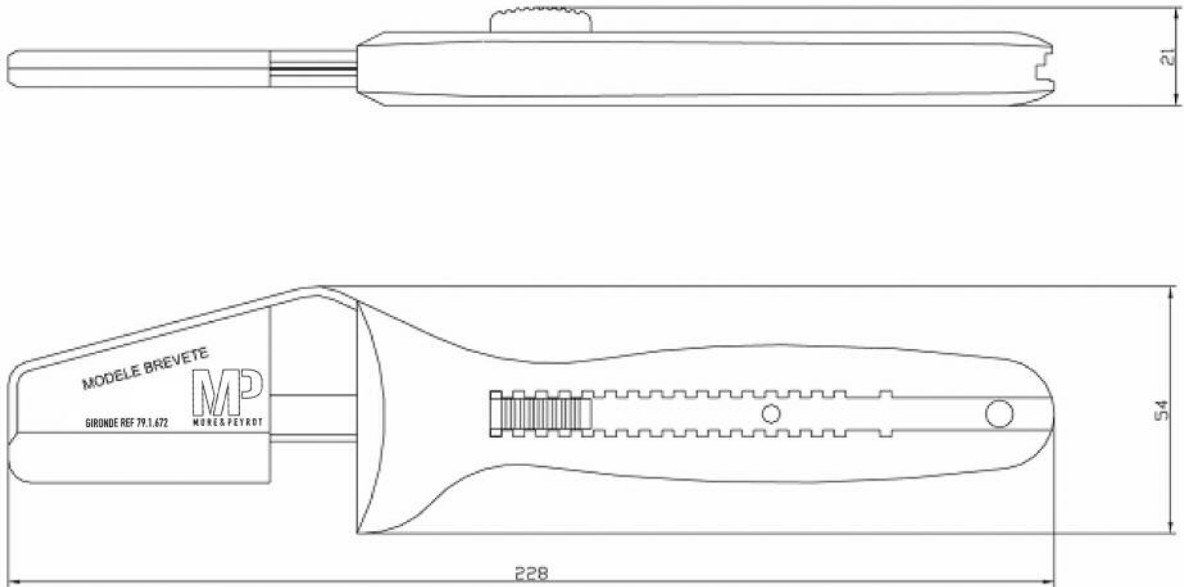
OTHER COMPATIBLE BLADES



REF 172.5
Blade made of premium quality steel

Blade Reference	Description	Type	Dimensions (in mm) Length • Width • Thickness	Sharpening Angle	Hardness
672.5.2	One-side toothed blade without breaking marks	High content steel carbon	96 x 12 x 0,2	19° - 32°	63,0 Hrc
172.5	Blade without breaking marks	High content steel carbon	96 x 12 x 0,2	19° - 32°	63,0 Hrc

TECHNICAL SHEET (in mm)



Packaging	Weight PKG	Dimensions (in mm) Length • Width • THK	Quantity PKG	Units	Accessories	Material	Color
LOOSE	93 g	228 x 54 x 21	10	3 units	Body	PA 6 + fiberglass	Dark grey
					Cursor	Polyoxymethylene (POM)	Yellow
					Blade 672.5.2	High content steel carbon	Metallic

Registered design, TÜV certified n°Z1A130383194002.

MP
MURE & PEYROT

MURE & PEYROT
25, rue Roger Touton • BP 50120
Parc d'Activités Bordeaux Nord
33041 BORDEAUX CEDEX - FRANCE

Tel.: +33 (0)556 693 200 / Fax: +33 (0)556 693 202 / E-mail: mail@mure-peyrot.com

FOR MORE INFORMATION
MURE-PEYROT.COM