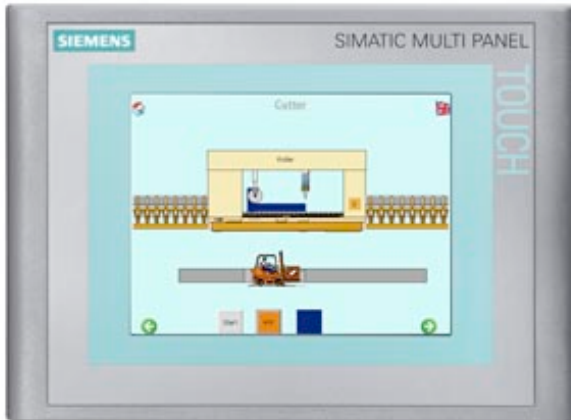


The new part, as of 01.01.2015, is blocked for delivery. Spare part can continue to be purchased as required, but price may deviate from new part. Further information under SIMATIC current entry ID: 109486162. For questions, the familiar contact persons are available to you. SIMATIC MP 177 6" Touch Multi Panel with retentive memory 5.7" TFT display 2 MB configuration memory, configurable with WinCC flexible 2008 Compact or higher



General information	
Product type designation	MP177
Customer-specific configuration	Yes
Display	
Design of display	TFT
Screen diagonal	5.7 in
Color display	Yes
Number of colors	65 536
Resolution (pixels)	
• Horizontal image resolution	320 Pixel
• Vertical image resolution	240 Pixel
Backlighting	
• MTBF backlighting (at 25 °C)	50 000 h
Control elements	
Control elements	Touch screen
Keyboard fonts	
• System keys	No
• Numeric keyboard	Yes; Onscreen keyboard

• alphanumeric keyboard	Yes; Onscreen keyboard
• hexadecimal keyboard	Yes; Onscreen keyboard
<b>Touch operation</b>	
• Design as touch screen	Yes; analog, resistive
<b>Connection type</b>	
• Type of connection for mouse/keyboard/barcode reader	USB / USB / USB
<b>Installation type/mounting</b>	
Mounting position	vertical
<b>Supply voltage</b>	
Type of supply voltage	DC
<b>Processor</b>	
Processor type	RISC 32 bit, 520 MHz
<b>Memory</b>	
Type of memory	Flash / RAM
Memory available for user data	2 Mbyte
Capacity of main memory, max.	128 Mbyte
<b>Time of day</b>	
<b>Clock</b>	
• Type	Hardware clock, battery backup, synchronizable
• retentive	Yes
• synchronizable	Yes
<b>Interfaces</b>	
Interfaces/bus type	1x RS 422, 1x RS 485, 1x Ethernet (RJ45) (max. 12 Mbit/s)
Number of industrial Ethernet interfaces	1
Number of RS 485 interfaces	1; together with RS 422
Number of RS 422 interfaces	1; together with RS 485
Number of USB interfaces	1; Up to 1 GB
Multimedia card/SD card slot	combined, from E-status 016 in connection with WinCC flexible 2008 SP1, MMC max. 128 MB / SD max. 512 MB
With software interfaces	No
<b>Protocols</b>	
Supports protocol for PROFINET IO	Yes
PROFIsafe	No
PROFIBUS	Yes
MPI	Yes
<b>Protocols (Ethernet)</b>	
• TCP/IP	Yes
<b>Protocols (terminal link)</b>	
• Sm@rtServer	Yes

Further protocols	
• EtherNet/IP	Yes
• MODBUS	Yes
• other bus systems	Yes
EMC	
Emission of radio interference acc. to EN 55 011	
• Limit class A, for use in industrial areas	Yes; EN 61000-6-4, interference emission: Intended for use in industrial areas.
Degree and class of protection	
IP (at the front)	IP65
NEMA (front)	NEMA 4, NEMA 4x, NEMA 12 (when installed)
IP (rear)	IP20
Standards, approvals, certificates	
Certifications	CE, GL, FM Class I Div. 2, cULus, C-TICK, NEMA 4, NEMA 4x, NEMA 12
cULus	Yes
Suitable for safety functions	No
Use in hazardous areas	
• ATEX Zone 2	No
• ATEX Zone 22	No
• FM Class I Division 2	Yes
Marine approval	
• Germanischer Lloyd (GL)	Yes
• American Bureau of Shipping (ABS)	No
• Bureau Veritas (BV)	No
• Det Norske Veritas (DNV)	No
• Lloyds Register of Shipping (LRS)	No
• Nippon Kaiji Kyokai (Class NK)	No
• Polski Rejestr Statkow (PRS)	No
Ambient conditions	
Ambient temperature during operation	
• min.	0 °C
• max.	50 °C
Ambient temperature during storage/transportation	
• min.	-20 °C
• max.	70 °C
Relative humidity	
• Operation, max.	90 %
Operating systems	
pre-installed operating system	Windows CE (Version 5)

## Configuration

Message indicator	Yes
Alarm system (incl. buffer and acknowledgment)	Yes
Process value display (output)	Yes
Process value default (input) possible	Yes
Recipe management	Yes
<b>Configuration software</b>	
<ul style="list-style-type: none"> <li>• Configuration tool</li> </ul>	WinCC flexible Compact Version 2008 SP1 or higher (to be ordered separately)
<ul style="list-style-type: none"> <li>• STEP 7 Basic (TIA Portal)</li> </ul>	No
<ul style="list-style-type: none"> <li>• STEP 7 Professional (TIA Portal)</li> </ul>	No
<ul style="list-style-type: none"> <li>• WinCC flexible Compact</li> </ul>	Yes
<ul style="list-style-type: none"> <li>• WinCC flexible Standard</li> </ul>	Yes
<ul style="list-style-type: none"> <li>• WinCC flexible Advanced</li> </ul>	Yes
<ul style="list-style-type: none"> <li>• WinCC Basic (TIA Portal)</li> </ul>	No
<ul style="list-style-type: none"> <li>• WinCC Comfort (TIA Portal)</li> </ul>	Yes
<ul style="list-style-type: none"> <li>• WinCC Advanced (TIA Portal)</li> </ul>	Yes
<ul style="list-style-type: none"> <li>• WinCC Professional (TIA Portal)</li> </ul>	Yes

## Languages

<b>Online languages</b>	
<ul style="list-style-type: none"> <li>• Number of online/runtime languages</li> </ul>	5
<b>Project languages</b>	
<ul style="list-style-type: none"> <li>• Languages per project</li> </ul>	32

## Functionality under WinCC (TIA Portal)

Libraries	Yes
Task planner	Yes
Help system	Yes
<ul style="list-style-type: none"> <li>• Number of characters per info text</li> </ul>	70
<b>Message system</b>	
<ul style="list-style-type: none"> <li>• Number of alarm classes</li> </ul>	32
<ul style="list-style-type: none"> <li>• Number of messages</li> </ul>	2 000
<ul style="list-style-type: none"> <li>• Bit messages</li> </ul>	Yes
<ul style="list-style-type: none"> <li>— Number of bit messages</li> </ul>	2 000
<ul style="list-style-type: none"> <li>• Analog messages</li> </ul>	Yes
<ul style="list-style-type: none"> <li>— Number of analog messages</li> </ul>	2 000
<ul style="list-style-type: none"> <li>• Telegram message procedure Alarm S</li> </ul>	Yes
<ul style="list-style-type: none"> <li>• System messages HMI</li> </ul>	Yes
<ul style="list-style-type: none"> <li>• System messages PLC</li> </ul>	Yes
<ul style="list-style-type: none"> <li>• System messages, other (SIMATIC S7, Sinumerik, Simotion, etc.)</li> </ul>	Yes
<ul style="list-style-type: none"> <li>• Lines</li> </ul>	1

• Number of characters per message	80
• Number of process values per message	8
• Acknowledgment groups	
— Number of acknowledgement groups	Yes
• Message indicator	Yes
• First/last value	Yes
<b>Recipe management</b>	
• Number of recipes	100
• Data records per recipe	200
• Entries per data record	200
• Recipe memory	32 KB integrated Flash, expandable
<b>Variables</b>	
• Number of variables per device	1 000
• Number of variables per screen	50
• Number of variables	1 000
• Type Date & Time	1 000
• Limit values	Yes
• Multiplexing	Yes
• Structures	No
<b>Images</b>	
• Number of configurable images	500
• Permanent window/default	Yes
• Start screen configurable	Yes
• Image selection by PLC	Yes
• Image number in the PLC	Yes
<b>Image objects</b>	
• Text objects	2,500 text elements
• Number of I/O fields per image	50
• Number of date/time fields	30
• Return	Yes
• Graphics object	Bit maps, icons, vector graphics
— Icons	500
<b>Complex image objects</b>	
• Status/control	With SIMATIC S7
• dynamic objects	Diagrams, bar graphs, sliders, analog display, invisible buttons
— Number of objects per project	500
— Number of curve diagrams per image	5
• Methods	Trend / profile
• Bar graphs	
— Number of bars per chart	5
• Sliders	

— Number of slides per image	5
• Pointer instruments	
— Number of analog indicators per image	5
• Limit value lines	Yes
• Number of alphanumeric fields	1 000
— alphanumeric fields per image	50
• Number of numerical fields	1 000
— numerical fields per image	50
• Number of password fields	1 000
• Number of visible switches per project	1 000
— visible switches per image	100
— hidden switches per image	100
• Number of status switches per project	1 000
— Number of status switches per image	100
• Number of selector switches per project	200
— Selector switches per image	100
• Number of signal lamps per project	1 000
— Signal lamps per image	100
<b>Attributes for dynamic objects</b>	
• Color change	Yes
• X/Y movement	Yes
• Hide	Yes
• Angle of rotation	No
<b>Lists</b>	
• Number of text lists per project	300
• Number of text lists per image	10
• Number of entries per text list	30
• Number of graphics lists per project	100
• Number of graphic lists per image	10
• Number of entries per graphics list	30
<b>Security</b>	
• Number of user groups	50
• Number of user rights	32
• Password export/import	Yes
<b>Logging through printer</b>	
• Recording/Printing	Alarms, report (shift report), color print, hardcopy
<b>Transfer (upload/download)</b>	
• Transfer of configuration	MPI/PROFIBUS DP, serial, USB, Ethernet, automatic transfer recognition
<b>Process coupling</b>	

- Connection to controller  
S5, S7-200, S7-300/400, TI 505, Win AC, SINUMERIK, SIMOTION, Allen Bradley (DF1), Allen Bradley (DF485), Mitsubishi (FX), OMRON (LINK/Multilink), Modicon (Modbus), further non-Siemens drivers, see chapter "System interfaces"
- S7-1200  
Yes
- S7-1500  
Yes
- S7-200  
Yes
  - PPI (point-to-point)  
Yes
  - PPI network  
Yes
  - MPI  
Yes
  - PROFIBUS DP  
Yes
  - Ethernet  
Yes
- S7-300/400  
Yes
  - MPI  
Yes
  - PROFIBUS DP  
Yes
  - PROFINET  
Yes
- S5  
Yes
  - PROFIBUS DP  
Yes
- TI 505  
Yes
- Allen Bradley (DF1)  
Yes
- Allen Bradley (DF485)  
Yes
- Mitsubishi (FX)  
Yes
- Mitsubishi (MP4)  
Yes
- Telemecanique (Uni-Telway)  
Yes
- OMRON (LINK/Multilink)  
Yes
- Modicon (Modbus)  
Yes
- GE-Fanuc (SNP)  
Yes

#### Functions

- TAB sequence  
Yes
- Calculating functions  
Yes
- Animate  
Yes

#### Service tools/configuration aids

- Clean screen  
Yes
- Touch calibration  
Yes
- Backup/Restore manually  
Yes
- Simulation  
Yes
- Device switchover  
Yes

#### Peripherals/Options

##### Peripherals

- SIMATIC HMI MM memory card: Multi Media Card  
Printer, barcode reader  
Yes

<ul style="list-style-type: none"> <li>• SIMATIC HMI SD memory card: Secure Digital memory card</li> <li>• USB memory</li> </ul>	Yes; WP gate is not supported.
Additional software components loadable	Yes

### Dimensions

Width of the housing front	212 mm
Height of housing front	156 mm
Mounting cutout, width	198 mm
Mounting cutout, height	142 mm
Overall depth	45 mm

### Weights

Weight (without packaging)	0.85 kg; max.
----------------------------	---------------

### Other

free hotline	Yes
--------------	-----

**last modified:** 04/12/2019