

Individual mounting

| | | |
|------------------------|--------------------|--|
| sub-base non "plug-in" | sub-base "plug-in" | |
|------------------------|--------------------|--|

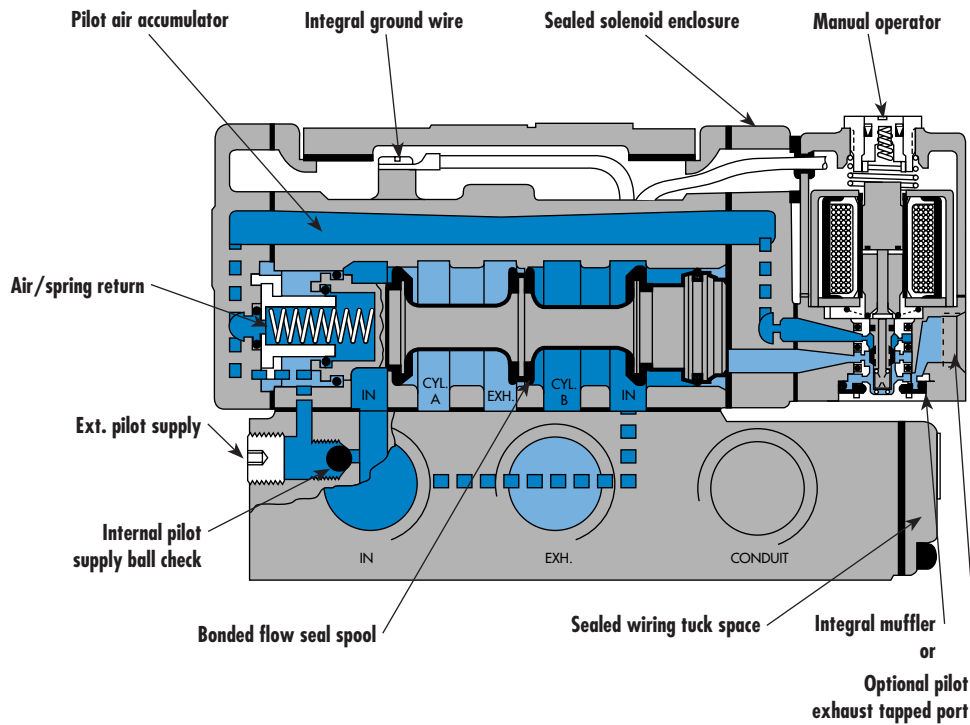
Series

Manifold mounting

| | | |
|------------------------|--------------------|--|
| sub-base non "plug-in" | sub-base "plug-in" | |
|------------------------|--------------------|--|

35

100



200

55

56

57

58

59

45

700

900

82

SERIES FEATURES

- The patented MACSOLENOID® with its non-burn out feature on AC service.
- A large checked accumulator for consistent shifting on single and double solenoid models.
- A plug-in design that provides for internal or external pilot with or without lights and all electrical and air plumbing in the base — the valve portion is the same.
- Non-lubricated or lubricated service.
- Optional low wattage DC solenoids down to 1 watt.
- Optional indicator lights, and various types of manual operators.
- Non plug-in or external plug-in models are available.

6300

6500

6600

1300

800

ISO 1

ISO 2

ISO 3

MAC 125A

MAC 250A

MAC 500A

TECHNICAL DATA

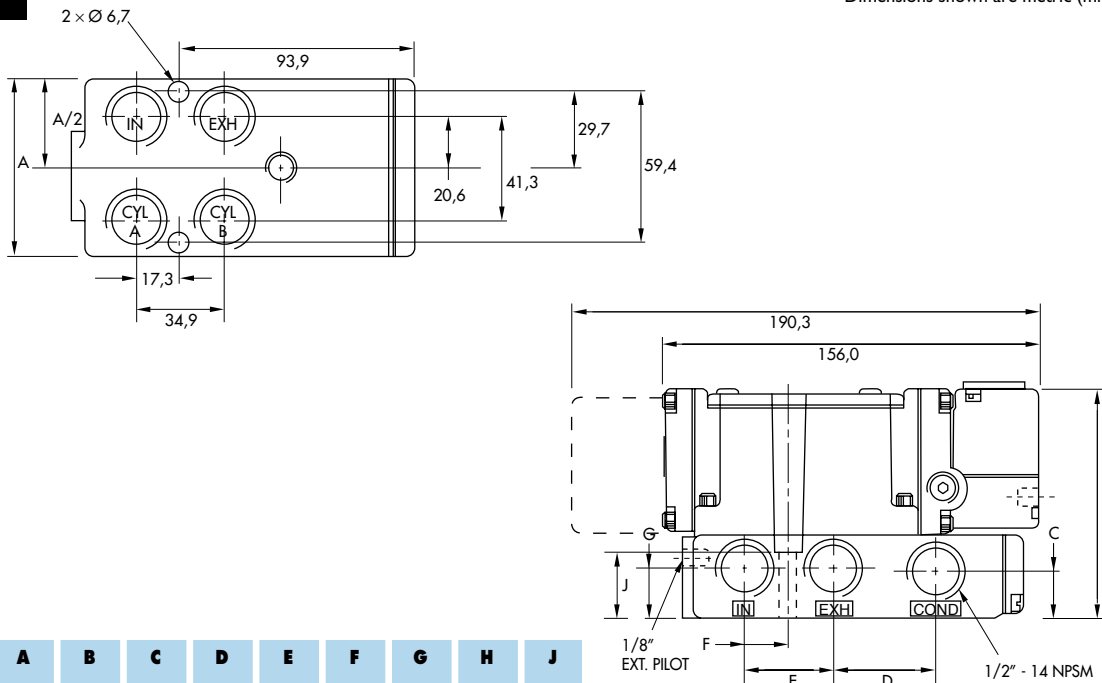
| | | | |
|-----------------------------------|--|------------------------------|------------------------|
| Fluid : | Compressed air, vacuum, inert gases | | |
| Pressure range : | Internal pilot : single operator and 3 positions : 25-150 PSI | double operator : 10-150 PSI | |
| | External pilot : vacuum to 150 PSI | | |
| Pilot pressure : | Single operator and 3 positions : 25-150 PSI Double operator : 10-150 PSI | | |
| Lubrication : | Not required, if used select a medium aniline point lubricant (between 180°F to 210°F) | | |
| Filtration : | 40 µ | | |
| Temperature range : | 0°F to 120°F (-18°C to 50°C) | | |
| Flow (at 6 bar, ΔP=1bar) : | 3/8" : (4.5 C _v), 1/2" : (5.0 C _v), 3/4" : (5.1 C _v) | | |
| Coil : | Epoxy encapsulated - class A wires - Continuous duty | | |
| Voltage range : | -15% to +10% of nominal voltage | | |
| Protection : | Consult factory | | |
| Power : | ~ Inrush : 14.8 VA | Holding : 10.9 VA | |
| | = 1 to 17.1 W | | |
| Response times : | 24 VDC (8.5 W) | Energize : 12 ms | De-energize : 12 ms |
| | 120/60 | Energize : 9-14 ms | De-energize : 11-18 ms |

- Spare parts :
- Solenoid operator (power ≥ 4 W) : D1-XXBE, cover mounting screws 35206 and seal 16234.
 - Pilot valve : PME-XXYDA-BE, including seal 16337. • Pressure seal between valve and base : 16246.
 - Mounting screw valve to base (x4) : 32201.

- Options :
- BSPP threads.

DIMENSIONS

Dimensions shown are metric (mm)



| Port size | A | B | C | D | E | F | G | H | J |
|--------------------|------|-------|------|------|------|------|------|------|------|
| 3/8" - 1/2" | 69.6 | 97.4 | 18.3 | 40.6 | 36.0 | 17.9 | 19.0 | 23.6 | 25.4 |
| 3/4" | 94.5 | 109.3 | 17.3 | 46.7 | 40.1 | 19.2 | 20.8 | 35.9 | 36.6 |