

SB Manifolds

The SB Manifold can be assembled directly to a Standard Mounting Plate, eliminating the need for extra Mounting Accessories and reducing pipe work on site. The SB Manifolds can also be supplied with a wide Choice of Accessories.

Pressure-Temperature Rating acc. to Shell MESC:

Max. allowable (Working) Pressure (PS): DIN 19213 400 bar (5,801 psi) @ 38°C (100.4°F)

IEC 61518 413 bar (6,000 psi) @ 38°C (100.4°F)

Max. allowable Temperature (TS): 200°C (392°F)

SB Manifolds for Differential Pressure Transmitters

Connections

Instrument – Flange Connection acc. to:

- DIN 19213 part 2 rev. 1980
- DN EN 61518 Type A
- Rosemount 2051/3051 Coplanar™ Pressure Transmitter (not specified in Shell MESC)

Process:

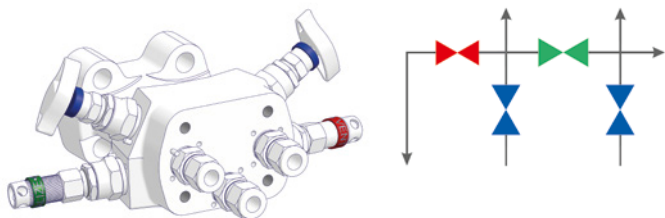
G 1/4 Female, 1/4 NPT or 1/2 NPT Female

Vent:

G 1/4 Female or 1/4 NPT Female

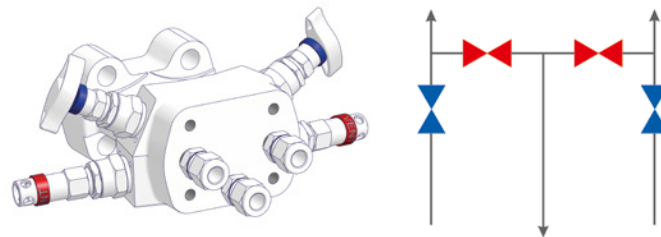
4 Valve Manifold – Type A

Double Isolate/Equalize/Vent Block



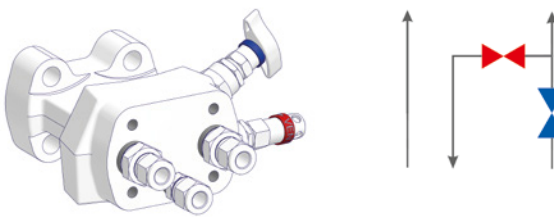
4 Valve Manifold – Type B

Double Isolate/Double Vent Block



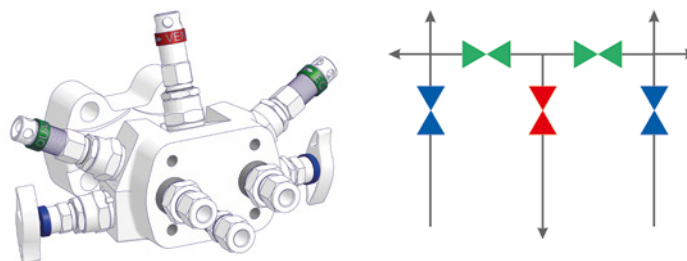
2 Valve Manifold – Type C

Single Isolate/Vent Block



5 Valve Manifold – Type K

Double Isolate/Double Equalize/Vent Block



Ordering Code – Different Types for Different Applications

Type	MESC Code	Description	Vent	Part Number
A	MESC 60.98.56.2*105.1	4 Valve Manifold	10 mm*2	SBA-AA0-SG*3
	MESC 60.98.56.2*107.1	For general applications.	3/8"*2	SBA-AA0-SG*8
B	MESC 60.98.56.2*115.1	4 Valve Manifold	10 mm*2	SBA-BA0-SG*3
	MESC 60.98.56.2*117.1	For applications where contamination of process stream is not permitted.	3/8"*2	SBA-BA0-SG*8
C	MESC 60.98.56.2*125.1	2 Valve Manifold	10 mm*2	SBA-CA0-SG*3
	MESC 60.98.56.2*127.1	For pressure applications and level measurements on atmospheric tanks.	3/8"*2	SBA-CA0-SG*8
K	Not specified in Shell MESC	5 Valve Manifold With Natural Gas Metering Pattern.	10 mm*2	SBA-KA0-SB*3
			3/8"*2	SBA-KA0-SB*8

*1 Manifolds with Transmitter Connection acc. to IEC 61518 and Seal Ring/Packing in Graphite = MESC 60.98.56.4###.1. See Cross Reference Page 19.

*2 Compression Fitting – Make, type, size and composition as specified in the requisition/indent.

Note: Direct Mount Manifolds according to MESC 60.98.56.2... are provided with PTFE Seal Ring / Packing. Manifolds with Graphite Seal Ring / Packing are according to MESC 60.98.56.4...!

SB Manifolds

SB Manifolds for Pressure Transmitters

Connections

Instrument:

Flange Connection acc. to:

- DIN 19213 part 2 rev. 1980
- DN EN 61518 Form A
- Rosemount 2051/3051 Coplanar™ Pressure Transmitter (not specified in Shell MESC)

or Swivel Gauge Connector 1/2 NPT resp. G1/2

Process:

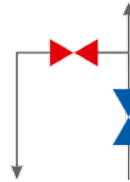
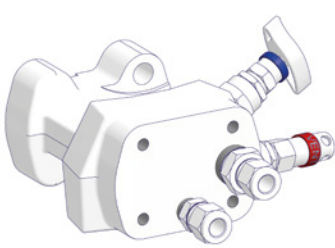
G 1/4 Female, 1/4 NPT or 1/2 NPT Female

Vent:

G 1/4 Female or 1/4 NPT Female

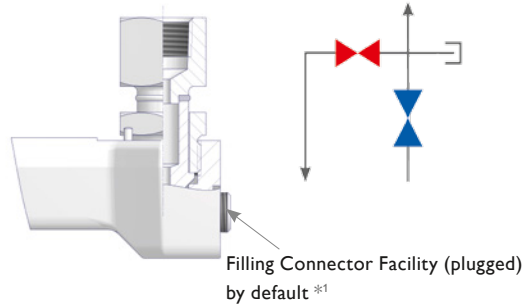
2 Valve Manifold – Type D

Single Isolate/Vent Block
Flange Connection DIN 19213



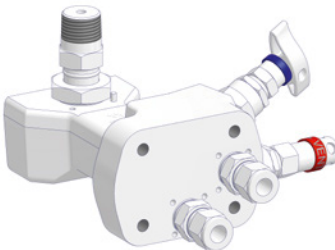
2 Valve Manifolds – Type E, F and G

with Swivel Gauge Adapter
see also below illustrations



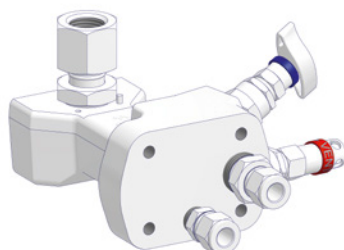
2 Valve Manifold – Type E

Single Isolate/Vent Block
Swivel Gauge Adaptor 1/2 NPT Male



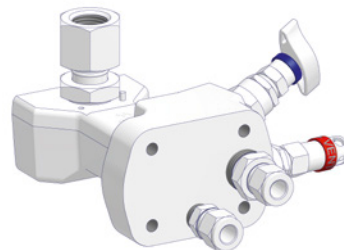
2 Valve Manifold – Type F

Single Isolate/Vent Block
Swivel Gauge Adaptor 1/2 NPT Female



2 Valve Manifold – Type G

Single Isolate/Vent Block
Swivel Gauge Adaptor G 1/2 Female



Ordering Code – Different Types for Different Applications

Type	MESC Code	Description	Vent	Part Number
D	MESC 60.98.56.2*235.1	2 Valve Manifold For pressure transmitters of the differential body design.	10 mm* ³	SBA-DA0-SG*3
	MESC 60.98.56.2*237.1		3/8"* ³	SBA-DA0-SG*8
E	MESC 60.98.56.305.1	2 Valve Manifold For pressure transmitters with 1/2 NPT Female connection.	10 mm* ³	SBA-EA0-SG*3
	MESC 60.98.56.325.1		3/8"* ³	SBA-EA0-SG*8
F	MESC 60.98.56.315.1	2 Valve Manifold For pressure transmitters with 1/2 NPT Male connection.	10 mm* ³	SBA-FA0-SG*3
	MESC 60.98.56.335.1		3/8"* ³	SBA-FA0-SG*8
G	MESC 60.98.56.317.1	2 Valve Manifold For pressure transmitters with G 1/2 Male (1/2 BSP) connection.	10 mm* ³	SBA-GA0-SG*3
	MESC 60.98.56.337.1		3/8"* ³	SBA-GA0-SG*8

*¹ If required, a Filling Connector can also be retrofitted. However, Filling Connectors to be ordered separately, see page 16.

*² Manifolds with Transmitter Connection acc. to IEC 61518 and Seal Ring/Packing in Graphite = MESC 60.98.56.4###.1. See Cross Reference Page 19.

*³ Compression Fitting – Make, type, size and composition as specified in the requisition/indent.

Note: Direct Mount Manifolds according to MESC 60.98.56.2... are provided with PTFE Seal Ring / Packing. Manifolds with Graphite Seal Ring / Packing are according to MESC 60.98.56.4...!

Ordering Information

		1	2	3	4	5	6	7	8	9	10	11	12	13	14
		S	B	A	-	A	A	0	-	S	G	R	3		
Manifolds															
Packing															
A	PTFE														
B	Graphite (only if field 6 = C)														
L	ISO FE Series Type 1														
N	ISO FE Series Type 3														
Type															
A	Double Isolate / Equalize / Vent (General)														
B	Double Isolate / Vent (Anti-Contamination)														
C	Single Isolate / Vent (DP)														
D	Single Isolate / Vent (Pressure, DP Design)														
E	Single Isolate / Vent (1/2 NPT Male)														
F	Single Isolate / Vent (1/2 NPT Female)														
G	Single Isolate / Vent (G 1/2 Female)														
K	Double Isolate / Double Equalize / Vent Block (5 Valve Manifold)														
Transmitter Connection*1															
A	DIN 19213 Part 2 rev. 1980 or Threaded Type E, F and G with Swivel Gauge Adapter always 'A'														
B	Integral Style for Rosemount 2051/3051 Coplanar™ Pressure Transmitter (Type A, B, C and D only)														
C	DIN EN / IEC 61518 - Type A														
Material															
S	1.4401 / 1.4404 / 316 / 316L														
H	Alloy C-276 UNS N10276														
M	Alloy 400 UNS N04400														
F	Duplex UNS S31803														
Process / Vent Connection															
G	G 1/4 Female / G 1/4 Female														
B	1/2 NPT Female / 1/4 NPT Female														
C	1/4 NPT Female / 1/4 NPT Female														
Tube Fitting															
0	Without Tube Fitting														
K	With Twin Ferrule Tube Fitting														
Size of Compression Fitting															
0	Without Compression Fitting														
3	10 mm														
4	12 mm														
8	3/8"														
9	1/2"														
Options (if available)															
B	Oxygen Service (Not applicable for Purge Block)														
N	NACE / Sour Gas Service (Needle in Alloy 400)*2														
T	Anti-Tamper Key														
Additional Options (if available)															
0	No additional Option														

*1 Transmitter Connection:

A) DIN 19213: Type A, B, C, D and K are supplied with SST Hexagon Cap Screws 7/16-20 UNF x 1 1/2" and PTFE Seal Ring.

Threaded connection: 2 Valve Manifolds Type E, F and G with Swivel Gauge Adapter

B) Integral Style: No Bolts and Seal Rings are provided.

C) DIN EN / IEC 61518 Type A: Type A, B, C, D and K are supplied with SST Hexagon Cap Screws 7/16-20 UNF x 1 1/2" and Graphite Seal Ring, Packing is also Graphite.

Alternatively with PTFE Seal Ring if Packing is also PTFE – This Option is not specified in Shell MESC.

*2 316 SST Type includes NACE Option with Needle in 316 SST – Does not correspond to Shell MESC Spec.

Note: 2 Valve Manifolds Type E, F and G are equipped with a Filling Connector Facility (plugged) by default. Means, if required, a Filling Connector can also be retrofitted. However, Filling Connectors to be ordered separately, see page 16.