

3/2, 5/2 and 5/3 Valves, Series CD 4, G1/8

3/2-way valve, single solenoid, normally open or closed

Rexroth
Bosch Group



Technical Data

Type	Spool valve	
Working pressure range	See table	
Nominal flow rate Q _n at 6 bar (87 psi), Δp = 1 bar (15 psi)	900 l/min (0.90 Cv)	
Ambient temperature range	-15 °C to +50 °C (+5 °F to +122 °F)	
Medium	Compressed air, lubricated or non-lubricated	
Weight	0.300 kg (0.661 lbs)	
Materials	Body Seals	Zn-diecasting NBR(Nitrile Butadiene Rubber)
Operating voltages	50 Hz 60 Hz	DC ±10% AC -20% +10% AC -10% +20%
Power consumption	56 V DC	4,8 W
Inrush power	220/230 V AC 50/60Hz	8,8 / 7,7 VA
Holding power	220/230 V AC 50/60Hz	6,6 / 5,28 VA
Insulation class	F to VDE 0580	
Protection with el. connector	IP 65 to DIN VDE 0470	
Duty cycle	ED	100%
Switching times	t _F fill	17 ms
	t _E exhaust	29 ms



Application area

Suitable for all applications. The valve is non-overlapping.

Part no.

	External pilot	Working pressure range [bar] (psi)	Voltage and frequency	Part no.* for G1/8	Part no.* for M 10 x 1
	Without	3 to 10 (44 to 145)	24 V DC 220/230 V AC 50 / 60 Hz Basic valve without coil**	5772550220 5772555280	5772500220 5772505280
	With	-0,95 to 10 (-14 to 145) Pilot pressure ≥ 3 (44)	24 V DC 220/230 V AC 50 / 60 Hz Basic valve without coil**	5772560220 5772565280	— —
				5772565302	—

* Without electrical connector. ** Usable coils see accessories.

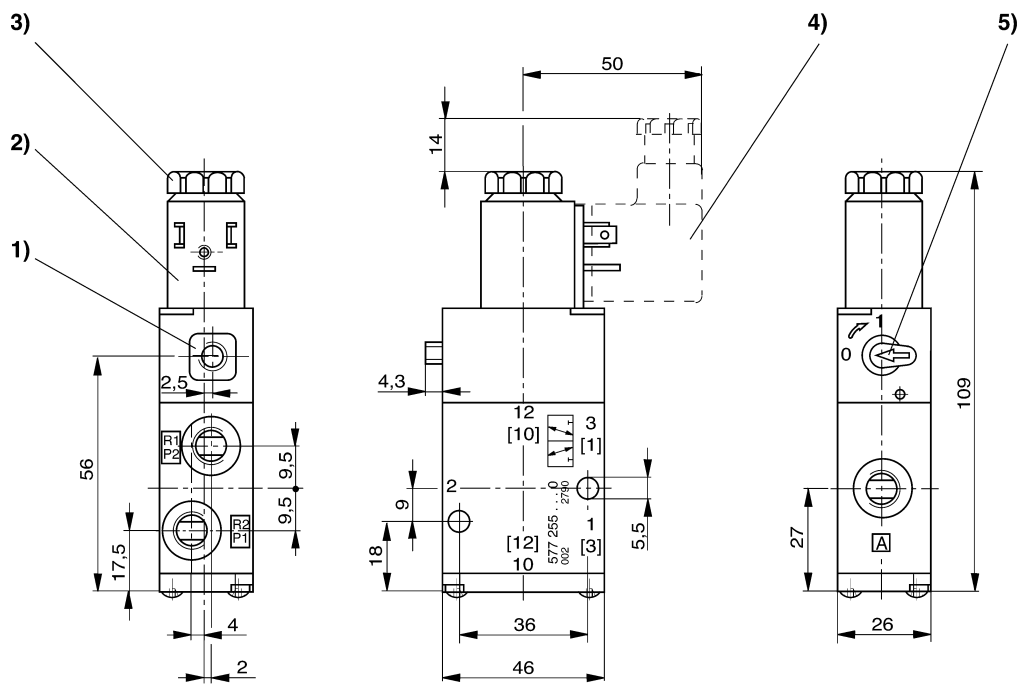
Accessories (to be ordered separately)

Accessory	Type	Part no.				
	Spare parts kit	5772500002				
	Spare parts ... ¹⁾					
	voltages connectors to DIN 43650, Form B and with LED	24 V DC 8941015202 8941016142	220/230 V AC	all voltages	8941015202	
	voltages	12 V DC	24 V DC	48 V DC	110 V DC	220 V DC
	coils	5777007012	5777007022	5777007032	5777007072	5777007082
	voltages	24 V AC	48 V AC	110/115 V AC	220/230 V AC	
	coils	5777007522	5777007542	5777007572	5777007582	

¹⁾ ... see separate spare parts catalogue

3/2, 5/2 and 5/3 Valves, Series CD 4, G1/8

3/2-way valve, single solenoid, normally open or closed



- 1) Only with external pilot G 1/8. 2) Coil can be fixed at 90° intervals. 3) After removal of cap M 5 internal thread.
4) Electrical connector can be fixed at 180° intervals. 5) Manual override.