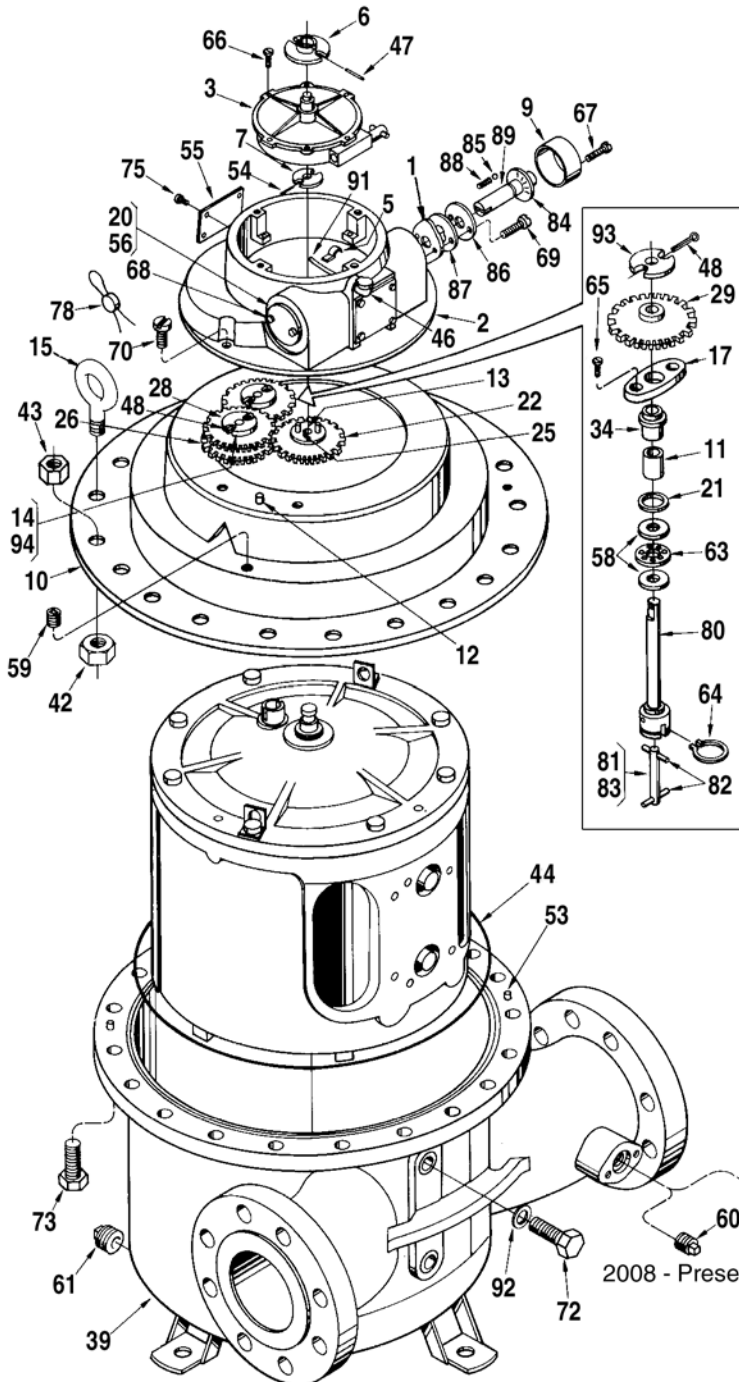
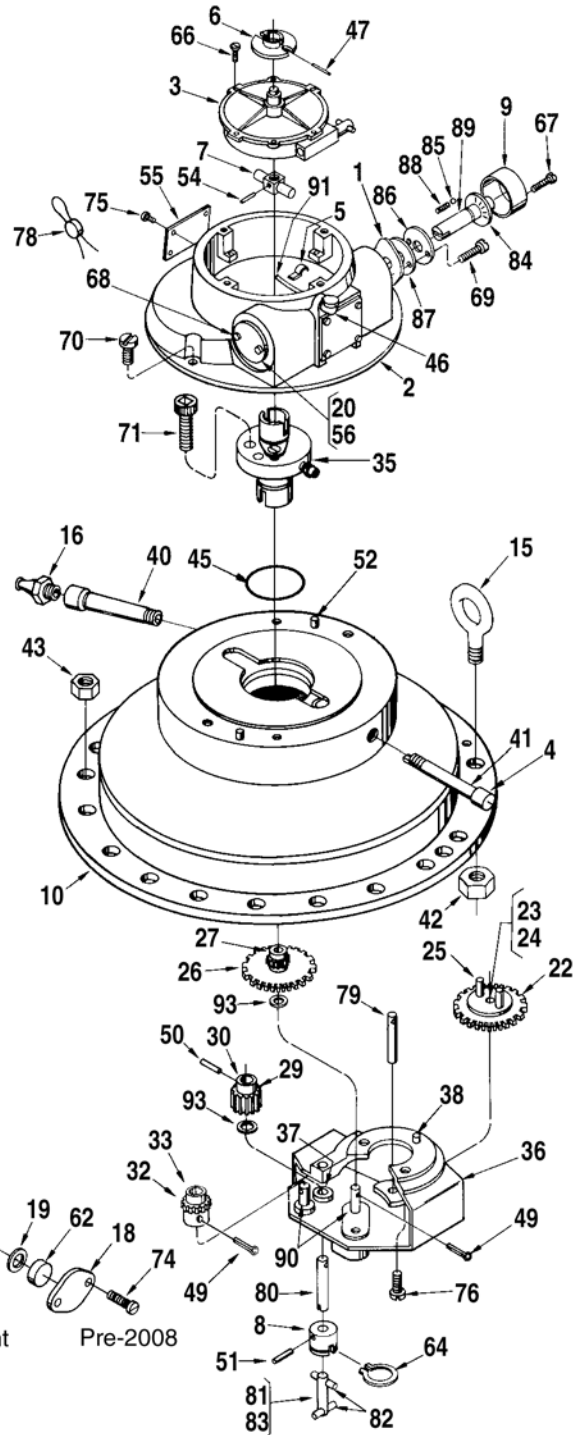


Smith Meter® PD Meter  
**Meter, PD Series,  
 F4-A1, S1**

**Pre – 2008  
 A1, S1**



**2008 – Present  
 S1**



2008 - Present

Pre-2008

		<b>Inner Mechanism</b>	
<b>Item</b>	<b>Description</b>	<b>Qty.</b>	<b>Part Number</b>
95	+@4 Block:		
	Standard.....	1	517085-001
	High Viscosity:		
	For 2,000 SSU to 10,000 SSU.....	1	517085-041
96	Body.....	1	511997-001
97	+ Bushing, Jackshaft:		
	Standard and All Iron.....	2	519882-001
	LPG.....	2	512796-001
98	+ Coupling, Drive.....	1	512064-002
99	Cover, Inner (Includes Item #100):		
	Standard and All Iron.....	1	516456-001
	LPG.....	1	516456-002
100	Cover, Pitot.....	1	512719-001
101	Dowel, Locating Arm.....	1	512115-001
102	Lug, Lift.....	2	512002-001
103	Nut, Pitot Assembly, #10-32 Hex.....	2	001723-400
104	Nut, 5/16-18 Shakeproof.....	1	009552-400
105	Pin, Groove, 3/16 x 3/4".....	1	007900-400
106	Pin, Groove, 5/64 x 5/8".....	1	009593-400
107	Pitot.....	1	072186-001
108	Plate.....	1	512714-001
109	Ring, Retaining.....	1	064150-001
110	@4 Rotor and Blade Assembly:		
	Previous Design (Prior to 1973):		
	Standard.....	1	515706-001
	All Iron.....	1	515706-002
	Current Design (1973 to present):		
	Standard.....	1	517231-001
	All Iron.....	1	517231-002
	LPG.....	1	517231-003
111	Arm, Locating.....	1	511945-001
112	+ Bearing, Rotor:		
	Standard and All Iron.....	2	516109-001
	LPG.....	2	516109-002
113	+ Bearing, Thrust:		
	Standard and All Iron.....	1	006519-001
	LPG.....	1	504658-001
114	+ Blade, Lower:		
	Standard.....	1	008901-001
	All Iron.....	1	009441-042
	LPG.....	1	504662-001
	Standard – Modified for 2,000 SSU to 10,000 SSU.....	1	008901-041
	Standard – Modified for 200°F Max.....	1	008901-042
	Standard – Modified for 2,000 SSU to 10,000 SSU and 200°F Max.....	1	008901-043
	A.I. – Modified for 2,000 SSU to 10,000 SSU.....	1	009441-041
115	Pin, Blade Roller.....	2	003449-001
116	Pin, Cotter, 3/32 x 1".....	2	006308-001
117	+ Roller, Blade:		
	Standard and All Iron.....	2	065109-001
	LPG.....	2	644412-402
118	+ Blade, Upper:		
	Standard.....	1	008900-001
	All Iron.....	1	009441-042
	LPG.....	1	504663-001
	Standard – Modified for 2,000 SSU to 10,000 SSU.....	1	008900-041
	Standard – Modified for 200°F Max.....	1	008900-042
	Standard – Modified for 2,000 SSU to 10,000 SSU and 200°F Max.....	1	008900-043