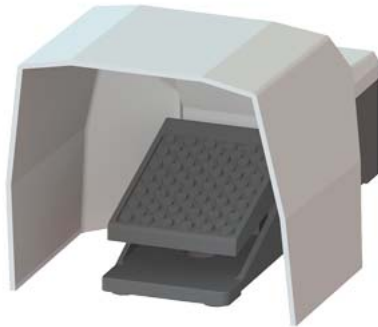


Momentary-contact foot switch, 1-pedal With cover, without latching Metal enclosure IP65, 1 NO+1 NC, cable entry M20 x 1.5



|   |                               |
|---|-------------------------------|
| product brand name                                    | SIRIUS                        |
| product designation                                   | momentary-contact foot switch |
| product type designation                              | 3SE29                         |
| suitability for use safety switch                     | No                            |
| <b>General technical data</b>                         |                               |
| protection class IP                                   | IP65                          |
| reference code according to IEC 81346-2               | S                             |
| Substance Prohibition (Date)                          | 07/01/2006                    |
| SVHC substance name                                   | Blei - 7439-92-1              |
| number of switching steps                             | 1                             |
| number of the actuation pedals                        | 1                             |
| minimum actuating force in directions of actuation    | 15 N                          |
| <b>Ambient conditions</b>                             |                               |
| ambient temperature during operation                  | -25 ... +80 °C                |
| number of NC contacts for auxiliary contacts          | 1                             |
| number of NO contacts for auxiliary contacts          | 1                             |
| operational current at AC-15                          |                               |
| • at 230 V rated value                                | 16 A                          |
| • at 400 V rated value                                | 16 A                          |
| operational current at DC-13                          |                               |
| • at 24 V rated value                                 | 3 A                           |
| • at 250 V rated value                                | 0.25 A                        |
| <b>Enclosure</b>                                      |                               |
| material of the enclosure                             | metal                         |
| color   |                               |
| • of the enclosure                                    | black                         |
| • of the enclosure top part                           | grey                          |
| <b>Actuator</b>                                       |                               |
| product feature                                       |                               |
| • interlock   | No                            |
| • latching  | No                            |
| cable entry type                                      | M20 x 1.5                     |
| <b>Installation/ mounting/ dimensions</b>             |                               |
| height  | 138 mm                        |
| width   | 156 mm                        |
| depth   | 265 mm                        |
| <b>Safety related data</b>                            |                               |
| B10 value with high demand rate according to SN 31920 | 1 000 000                     |
| proportion of dangerous failures                      |                               |
| • with low demand rate according to SN 31920          | 50 %                          |

|   |         |
|---|---------|
| • with high demand rate according to SN 31920                           | 50 %    |
| failure rate [FIT] with low demand rate according to SN 31920           | 100 FIT |
| T1 value for proof test interval or service life according to IEC 61508 | 20 a    |

#### Certificates/ approvals

|                          |                           |
|--------------------------|---------------------------|
| General Product Approval | Declaration of Conformity |
|--------------------------|---------------------------|



[Confirmation](#)



|                   |                   |       |
|-------------------|-------------------|-------|
| Test Certificates | Marine / Shipping | other |
|-------------------|-------------------|-------|

[Miscellaneous](#)



[Confirmation](#)

#### Further information

Siemens has decided to exit the Russian market (see here).

<https://press.siemens.com/global/en/pressrelease/siemens-wind-down-russian-business>

Siemens is working on the renewal of the current EAC certificates.

Please contact your local Siemens office on the status of validity of the EAC certification if you intend to import or offer to supply these products to an EAC relevant market (other than the sanctioned EAEU member states Russia or Belarus).

Information on the packaging

<https://support.industry.siemens.com/cs/ww/en/view/109813875>

Information- and Downloadcenter (Catalogs, Brochures,...)

<https://www.siemens.com/ic10>

Industry Mall (Online ordering system)

<https://mall.industry.siemens.com/mall/en/en/Catalog/product?mlfb=3SE2902-0AA20>

Cax online generator

<http://support.automation.siemens.com/WW/CAXorder/default.aspx?lang=en&mlfb=3SE2902-0AA20>

Service&Support (Manuals, Certificates, Characteristics, FAQs,...)

<https://support.industry.siemens.com/cs/ww/en/ps/3SE2902-0AA20>

Image database (product images, 2D dimension drawings, 3D models, device circuit diagrams, EPLAN macros, ...)

[http://www.automation.siemens.com/bilddb/cax\\_de.aspx?mlfb=3SE2902-0AA20&lang=en](http://www.automation.siemens.com/bilddb/cax_de.aspx?mlfb=3SE2902-0AA20&lang=en)

