



Superior Clamping and Gripping



## Product Information

Universal gripper PGN-plus 40

# PGN-plus

Universal gripper

## Reliable. Robust. Flexible.

### Universal gripper PGN-plus

Universal 2-finger parallel gripper with a high gripping force and high maximum moments due to the use of a multi-tooth guidance

#### Field of application

Optimal standard solution for many fields of application. For universal use in clean to slightly dirty environments. Special versions available for dirty environments.

#### Advantages – Your benefits

**Robust multi-tooth guidance** for precise handling

**High maximum moments possible** suitable for using long gripper fingers

**Drive concept oval piston** for maximum gripping forces

**Mounting from two sides in three screw directions** for universal and flexible gripper assembly

**Air supply via hose-free direct connection or screw connections** for universal and flexible gripper assembly

**Comprehensive sensor accessory program** for versatile querying possibilities and stroke position monitoring

**Compact dimensions** for minimal interfering contours in handling

**Manifold options** for special optimization for your specific case of application (dustproof, high-temperature, corrosion-protected, etc.)



Sizes  
Quantity: 11



Weight  
0.08 .. 39.5 kg



Gripping force  
123 .. 21150 N



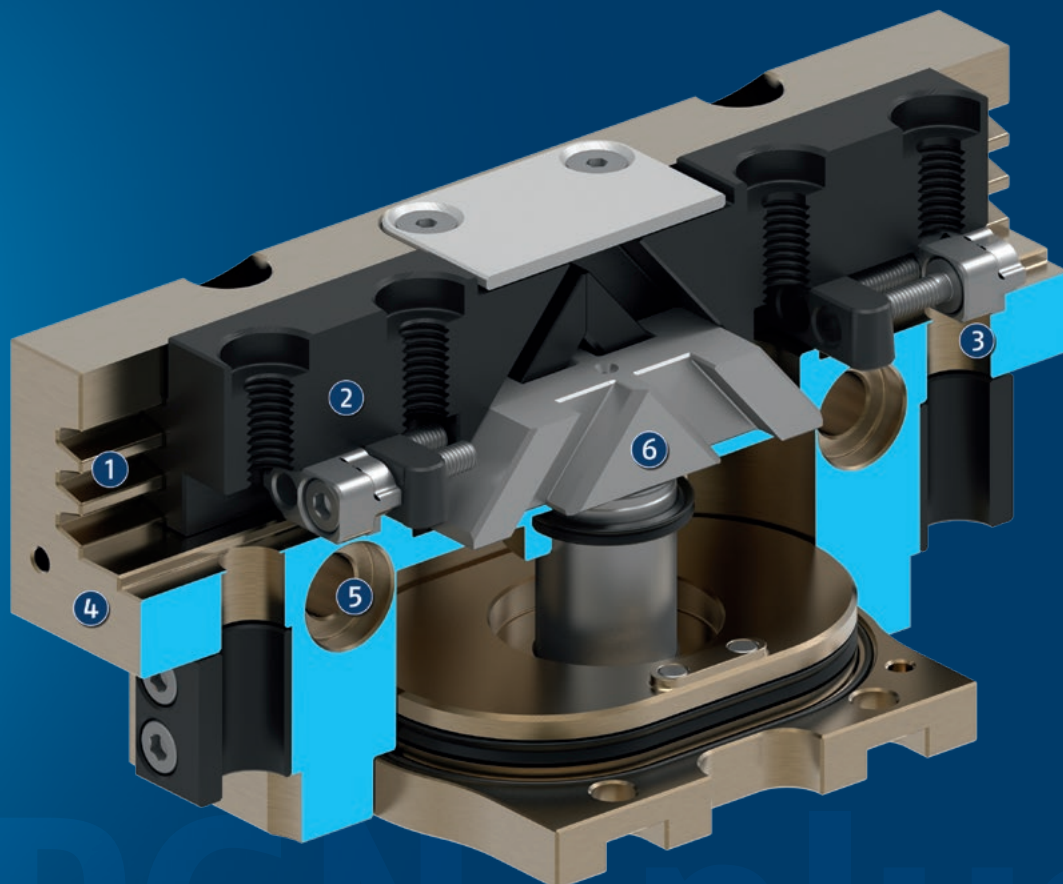
Stroke per jaw  
2 .. 45 mm



Workpiece weight  
0.62 .. 80.5 kg

## Functional description

The oval piston is moved up or down by compressed air. The angled active surfaces of the wedge-hook produce a synchronized, parallel jaw motion.



- ① **Multi-tooth guidance**  
highly loadable, nearly backlash-free base jaw guidance for long finger lengths
- ② **Base Jaw**  
for the connection of workpiece-specific gripper fingers
- ③ **Sensor system**  
Brackets for proximity switches and adjustable control cams in the housing

- ④ **Housing**  
is weight-optimized due to the use of high-strength aluminum alloy
- ⑤ **Centering and mounting possibilities**  
for universal assembly of the gripper
- ⑥ **Wedge-hook design**  
for high force transmission and centric gripping

## General notes about the series

**Operating principle:** Wedge gear with surface power transmission

**Housing material:** Aluminum

**Base jaw material:** Steel

**Actuation:** pneumatic, with filtered compressed air as per ISO 8573-1:2010 [7:4:4].

**Warranty:** 36 months

**Scope of delivery:** Brackets for proximity switches, centering sleeves, O-rings for direct connection, assembly instructions (operating manual with declaration of incorporation is available online)

**Gripping force maintenance device:** possible by using the version with mechanical gripping force maintenance or pressure maintenance valve SDV-P

**Gripping force:** is the arithmetic sum of the individual force applied to each jaw at distance P (see illustration).

**Finger length:** is measured from the reference surface as the distance P in direction to the main axis.

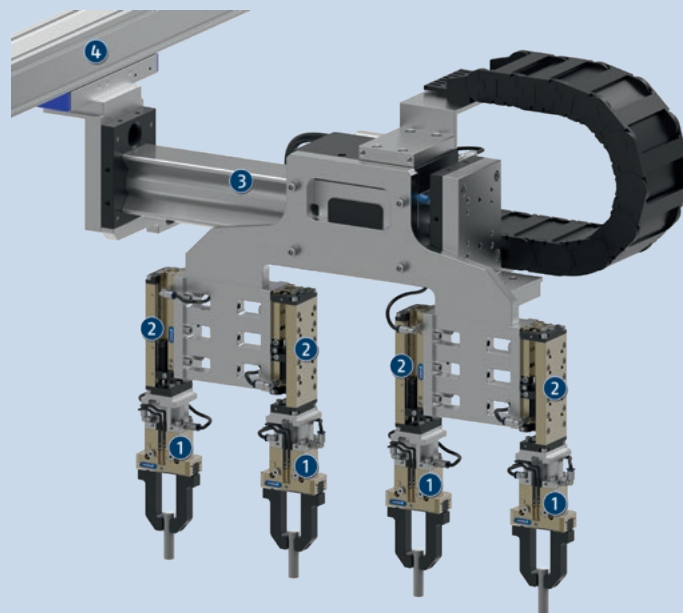
The maximum permissible finger length applies until the nominal operating pressure is achieved. With higher pressures, the finger length must be reduced proportionally to the nominal operating pressure.

**Repeat accuracy:** is defined as a distribution of the end Position for 100 consecutive strokes.

**Workpiece weight:** is calculated for force-fit gripping with a coefficient of static friction of 0.1 and a safety factor of 2 against workpiece slippage at acceleration due to gravity g. For form-fit or capture gripping, there are significantly higher permissible workpiece weights.

**Closing and opening times:** are purely the times that the base jaws or fingers are in motion. Valve switching times, hose fill times, or PLC reaction times are not included, and are to be considered when cycle times are calculated.

**Cleanroom class ISO 14644-1:** 5



## Application example

Handling gantry with multiple grippers for simultaneous removal of several workpieces

① 2-finger parallel gripper PGN-plus

② Linear module CLM

③ Universal linear module LDN

④ Universal linear module Beta

## SCHUNK offers more ...

The following components make the product even more productive – the suitable addition for the highest functionality, flexibility, reliability, and controlled production.



Linear module



Quick change system



Universal swivel unit



Compensation unit



Jaw quick-change system



Universal intermediate jaw



Pressure maintenance valve



Manual change system



Finger blank



Flexible position sensor



Magnetic switches



Inductive proximity switches

① For more information on these products can be found on the following product pages or at [schunk.com](http://schunk.com).

## Options and special information

**Gripping force maintenance version AS/IS:** The mechanical gripping force maintenance version ensures minimum gripping force even in the event of a pressure drop. In the AS/IS version this acts as a closing force, in the IS version as an opening force.

**Anti-corrosion version K:** for use in corrosion-inducing atmospheres

**High-temperature version V/HT:** for use in hot environments

**Power booster version KVZ:** if higher gripping forces are required

**Precision version P:** for the highest accuracy

**ATEX version EX:** for explosive environments

**Dustproof version SD:** absolutely dustproof, increased degree of protection against ingress of materials.

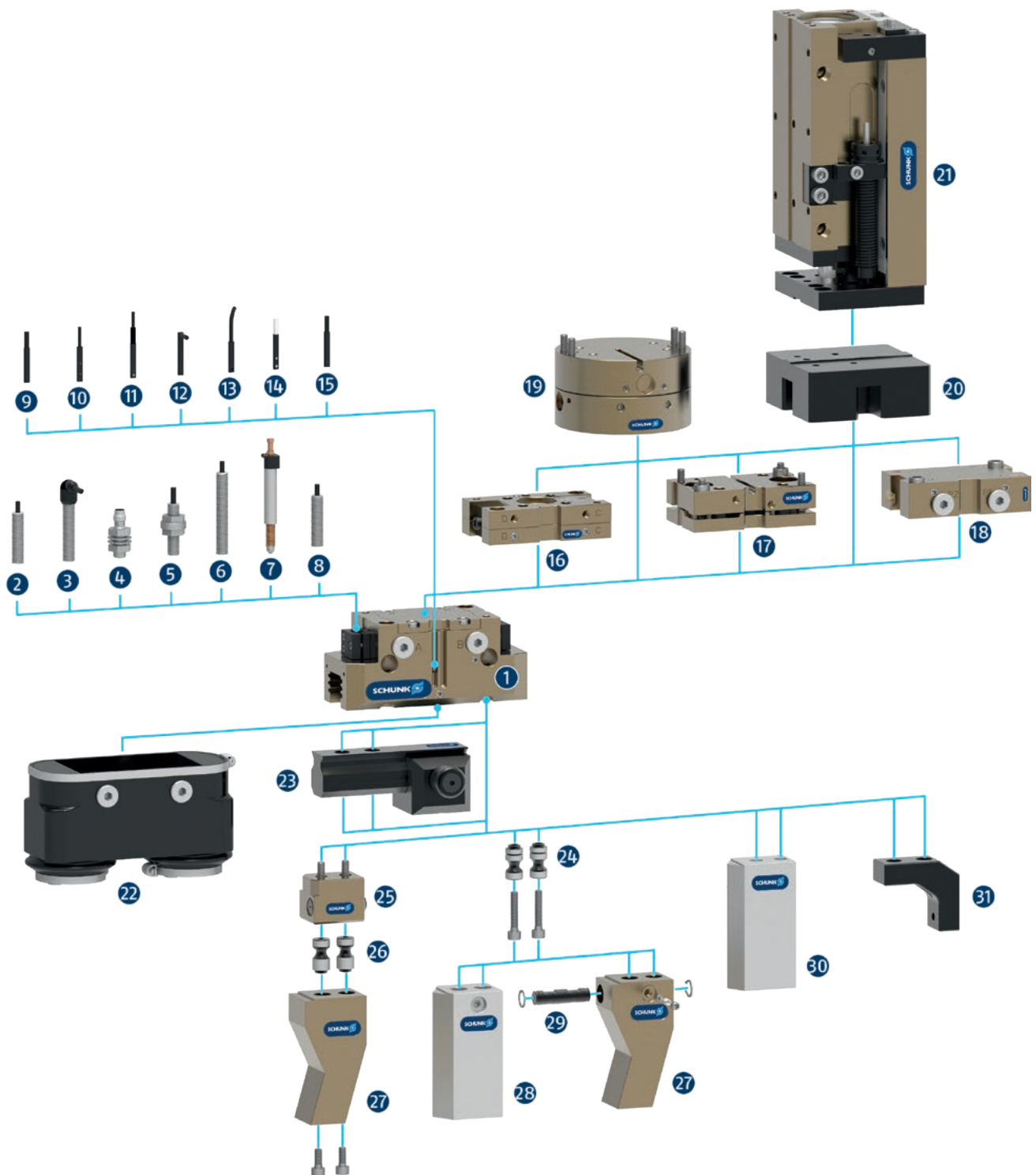
**Additional versions:** Various options can be combined with each other.

# PGN-plus

Universal gripper

## SCHUNK gripper PGN-plus

### Overview Accessories



- 1 **PGN-plus**  
Universal 2-finger parallel gripper with a high gripping force and high maximum moments due to the use of a multi-tooth guidance

## Sensor system

- 2 **IN ...**  
Inductive proximity switch with molded cable and straight cable outlet
- 3 **IN ...-SA**  
Inductive proximity switch with molded cable and lateral cable outlet
- 4 **IN-C 80**  
Inductive proximity switch, directly pluggable
- 5 **FPS**  
Flexible position sensor for monitoring up to five different, freely selectable positions
- 6 **APS-Z80**  
Inductive position sensor for precise position detection of the gripper jaws with analog output
- 7 **APS-M15**  
Mechanical measuring system for precise position detection of the gripper jaw with analog output
- 8 **RMS 80**  
Reed switch in round version
- 9 **MMS 22**  
Magnetic switch with straight cable outlet for monitoring a position  
  
**MMS 22-PI1**  
Magnetic switch with straight cable outlet for monitoring a freely programmable position
- 10 **MMS 22-PI2**  
Magnetic switch with straight cable outlet for monitoring two freely programmable positions
- 11 **MMS 22-PI1-HD**  
MMS 22-PI1 in robust design  
  
**MMS 22-PI2-HD**  
MMS 22-PI2 in robust design
- 12 **MMS 22-SA**  
Magnetic switch with lateral cable outlet for monitoring a position  
  
**MMS 22-PI1-SA**  
Magnetic switch with side cable outlet for monitoring a freely programmable position
- 13 **MMS-P**  
Magnetic switch with straight cable outlet for monitoring two freely programmable positions
- 14 **MMS 22-A**  
Analog magnetic switch with straight cable outlet for measuring the gripper jaw position with analog output and teach function

- 15 **RMS 22**  
Reed switch for direct assembly in the C-slot

## Complementary products

- 16 **CWS**  
Manual change system with integrated air feed-through for simple exchange of the handling components
- 17 **TCU**  
Tolerance compensation unit for compensating small tolerances in the plane
- 18 **SDV-P-E-P**  
Pressure maintenance valve for temporary force and position maintenance
- 19 **AGE**  
Compensation unit for compensation of large tolerances along the X and Y axes
- 20 **ASG**  
Adapter plate for combining various automation components in the modular system
- 21 **CLM**  
Linear module with pneumatic drive and scope-free pre-loaded junction rollers
- 22 **HUE**  
Sleeve for protection against dirt

## Finger Accessories

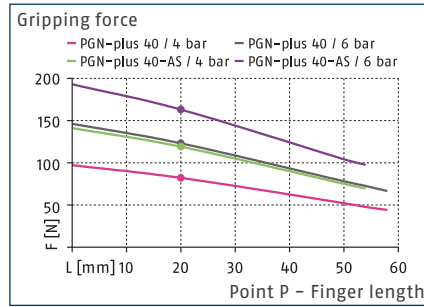
- 23 **UZB**  
The universal intermediate jaw allows fast tool-free and reliable plugging and shifting of top jaws at the gripper.
- 24 **BSWS-AR**  
Adapter coupling of jaw quick-change system for fast, manual change of top jaws
- 25 **BSWS-B**  
Locking mechanism of the jaw quick-change system for fast, manual exchange of top jaws
- 26 **BSWS-A**  
Adapter coupling of the jaw quick-change system for adaptation to the customized finger
- 27 **Customized fingers**
- 28 **BSWS-ABR**  
Finger blank made of aluminum with interface to the jaw quick-change system  
  
**BSWS-SBR**  
Finger blank made of steel with interface to the jaw quick-change system
- 29 **BSWS-UR**  
Locking mechanism for the integration of the jaw quick-change system into customized fingers
- 30 **ABR/SBR**  
Finger blanks made of steel or aluminum with standardized screw connection diagram
- 31 **ZBA**  
Intermediate jaws for reorientation of the mounting surface

# PGN-plus 40

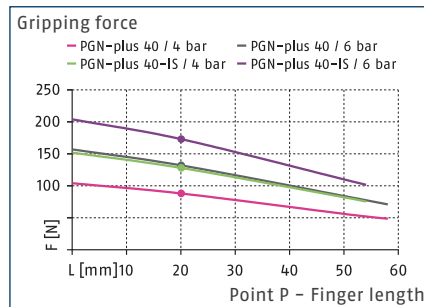
Universal gripper



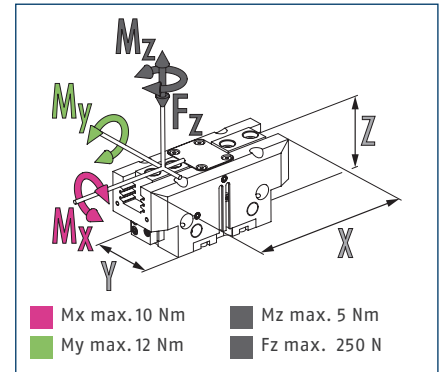
## Gripping force O.D. gripping



## Gripping force I.D. gripping



## Dimensions and maximum loads



① The indicated moments and forces are static values, apply for each base jaw and may appear simultaneously. Loads may additionally occur to the moment produced by the gripping force itself.

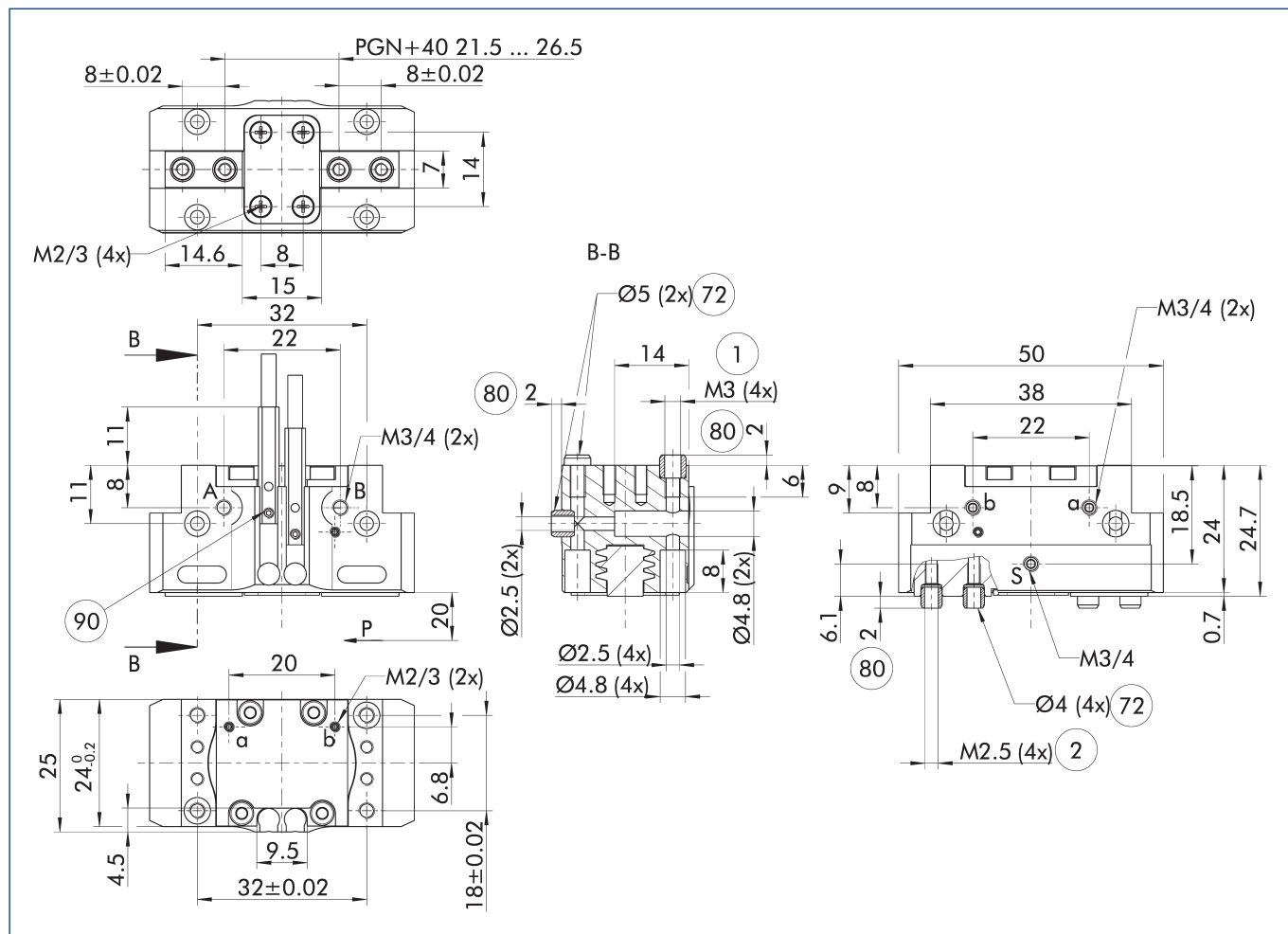
## Technical data

Description		PGN-plus 40	PGN-plus 40-AS	PGN-plus 40-IS
ID		0371080	0371082	0371084
Stroke per jaw	[mm]	2.5	2.5	2.5
Closing/opening force	[N]	123/132	163/-	-/182
Min. spring force	[N]		40	50
Weight	[kg]	0.08	0.1	0.1
Recommended workpiece weight	[kg]	0.62	0.62	0.62
Fluid consumption double stroke	[cm <sup>3</sup> ]	2.5	4.5	5.5
Min./nom./max. operating pressure	[bar]	2.5/6/8	4/6/6.5	4/6/6.5
Min./max. air purge pressure	[bar]	0.5/1	0.5/1	0.5/1
Closing/opening time	[s]	0.02/0.02	0.02/0.03	0.03/0.02
Closing/opening time with spring	[s]		0.05	0.05
Max. permissible finger length	[mm]	58	54	54
Max. permissible mass per finger	[kg]	0.1	0.1	0.1
IP protection class		40	40	40
Min./max. ambient temperature	[°C]	5/90	5/90	5/90
Repeat accuracy	[mm]	0.01	0.01	0.01
Dimensions X x Y x Z	[mm]	50 x 25 x 24.6	50 x 25 x 33.7	50 x 25 x 33.7
<b>Options and their characteristics</b>				
Dustproof version		37371080	37371082	37371084
IP protection class		64	64	64
Weight	[kg]	0.1	0.12	0.12
Corrosion-protected version		38371080	38371082	38371084
High-temperature version		39371080	39371082	39371084
Min./max. ambient temperature	[°C]	5/130	5/130	5/130
Power booster version		0372098	0372398	0372458
Closing/opening force	[N]	202/210	235/-	-/254
Weight	[kg]	0.11	0.13	0.13
Maximum pressure	[bar]	6	6	6
Max. permissible finger length	[mm]	50	50	50
Precision version		0371120	0371420	

① It may take a few 100 gripping cycles until the full gripping force (as indicated in the data table) will be available.



## Main view

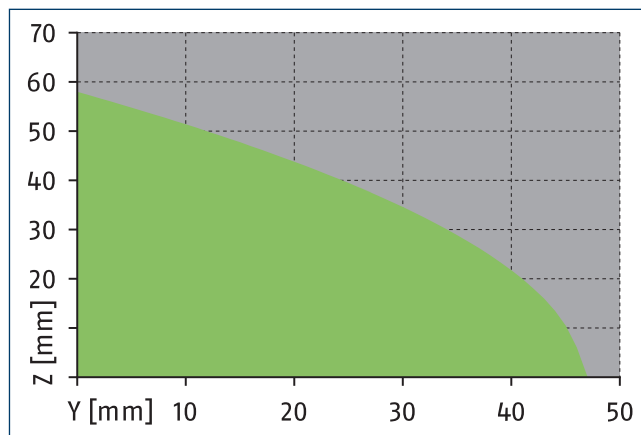
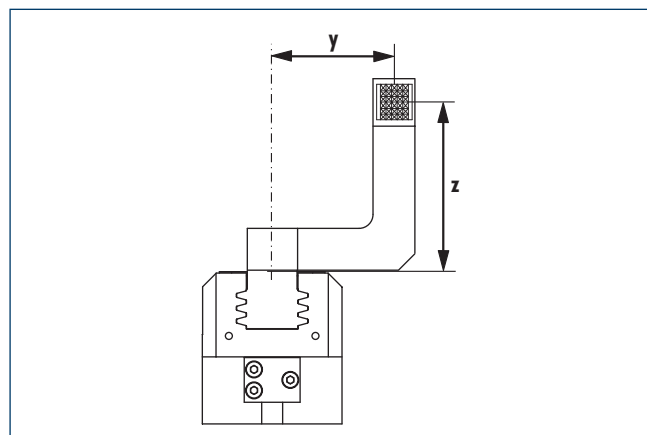


The drawing shows the gripper in the basic version with closed jaws, without dimensional consideration of the options described below.

① The SDV-P pressure maintenance valve can also be used for I.D. or O.D. gripping alternatively or in addition to the spring-loaded, mechanical gripping force maintenance device (see catalog section on accessories).

- A, a Main / direct connection, gripper opening
- B, b Main / direct connection, gripper closing
- S Air purge connection
- ① Gripper connection
- ② Finger connection
- 72 Fit for centering sleeves
- 80 Depth of the centering sleeve hole in the counter part
- 90 Sensor MMS 22..

## Maximum permitted finger projection



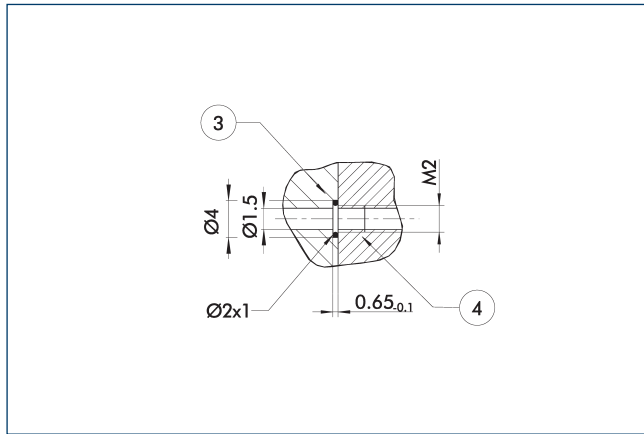
■ Permitted range      ■ Inadmissible range

The curve applies for stroke version 1. For other versions, the curve must be parallelly off-set to the max. permissible finger length.

# PGN-plus 40

Universal gripper

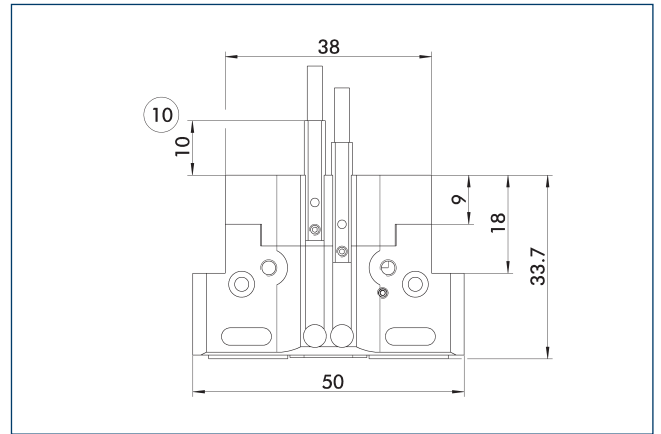
## Hose-free direct connection M2



- ③ Adapter
- ④ Grippers

The direct connection is used for supplying compressed air without hoses. Instead, the pressure medium is fed through bore-holes in the mounting plate.

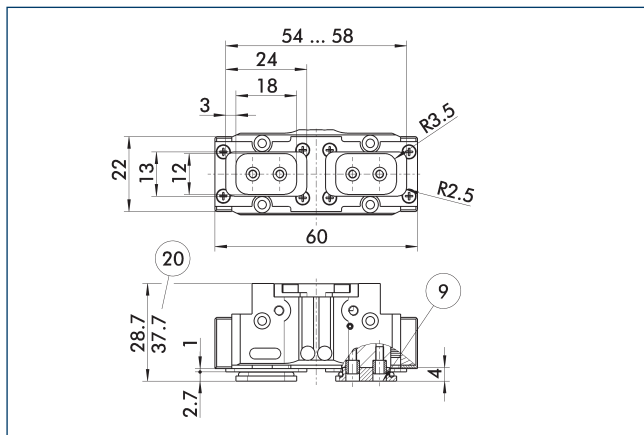
## Gripping force maintenance device AS / IS



- ⑩ Projection applies only for AS version

The mechanical gripping force maintenance device ensures that a minimum clamping force will be applied even if there is a drop in pressure. This acts as closing force in the AS / S version, and as opening force in the IS version. Besides this, the gripping force maintenance device can be used to increase the gripping force or for single actuated gripping.

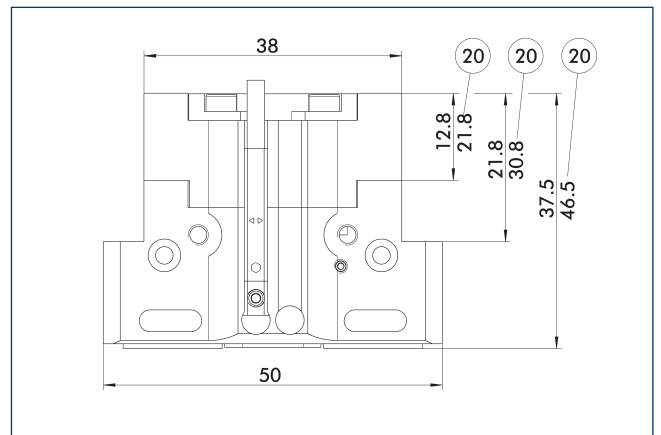
## Dustproof version



- ⑨ For mounting screw connection
- ⑩ For AS / IS version diagram, see basic version

The "dustproof" option increases the degree of protection against penetrating substances. The assembly diagram shifts by the height of the intermediate jaw. The finger length is still measured from the upper edge of the gripper housing.

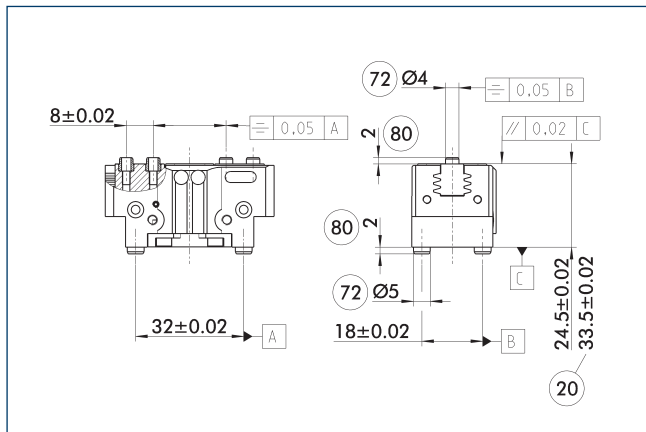
## Power booster version



- ⑩ For AS / IS version

The KVZ cylinder increases the gripping forces during opening and closing. A second, in series-connected piston also increases the force on the wedge hook. Please consider that grippers which are equipped with a gripping force maintenance device are higher.

## Precision version



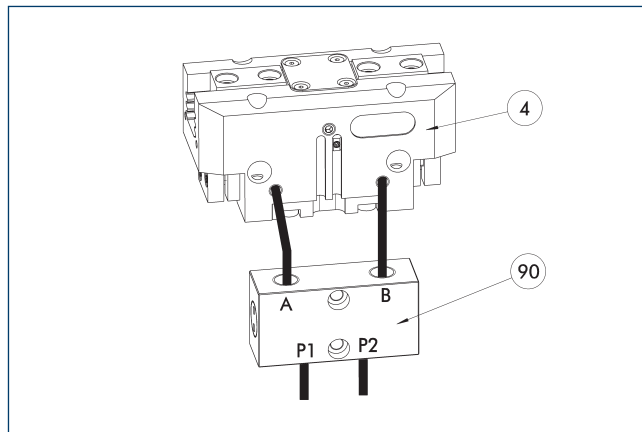
②① For AS / IS version

⑦② Fit for centering sleeves

⑧① Depth of the centering sleeve hole in the counter part

The indicated tolerances just refer to the variants of precision versions shown in the chart of technical specifications. All other variants of precision versions are available on request.

## SDV-P pressure maintenance valve



④ Grippers

⑨① SDV-P pressure maintenance valve

The SDV-P pressure maintenance valve ensures in emergency STOP situations that the pressure in the piston chamber of pneumatic gripper, swivel, linear, and quick-change modules is temporarily maintained.

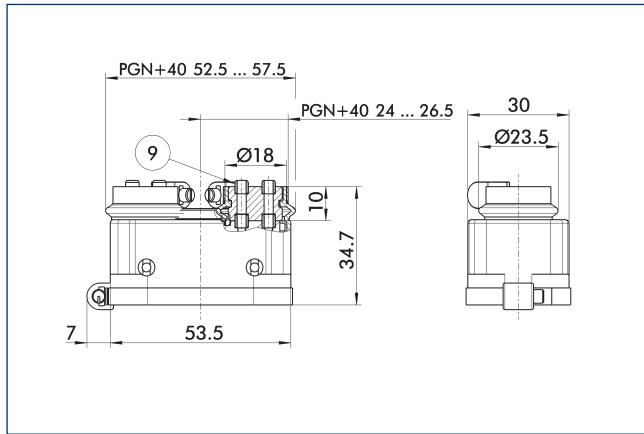
Description	ID	Recommended hose diameter [mm]
Pressure maintenance valve		
SDV-P 04	0403130	6
Pressure maintenance valve with air bleed screw		
SDV-P 04-E	0300120	6

① In order to achieve the specified closing and opening time for each gripper variant, the recommended hose diameter must be used. The direct allocation of the respective variant of the gripper for the respective SDV-P can be found at [schunk.com](http://schunk.com).

# PGN-plus 40

Universal gripper

## Protective cover HUE PGN-plus 40



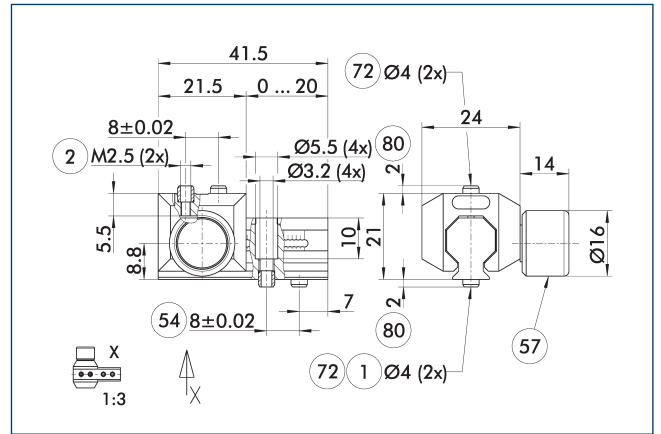
⑨ For mounting screw connection diagram, see basic version

The HUE protective cover fully protects the gripper against external influences. The cover is suitable for applications of up to IP65 if an additional sealing of the cover bottom is provided. For detailed information, please see the HUE series. The connection diagram shifts by the height of the intermediate jaw.

Description	ID	IP protection class
Protection cover		
HUE PGN-plus 40	0371490	65

① The HUE protective cover is not suitable for use on grippers with gripping force maintenance. An inductive monitoring of the gripper in connection with the HUE protective cover is not possible. SCHUNK recommends the use of magnetic sensors that are approved for the respective gripper variant.

## UZB 40 universal intermediate jaw



- ① Gripper connection
- ② Finger connection
- ⑤④ Optional right or left connection
- ⑤⑦ Locking
- ⑦② Fit for centering sleeves
- ⑧① Depth of the centering sleeve hole in the counter part

The drawing shows the UZB universal intermediate jaw.

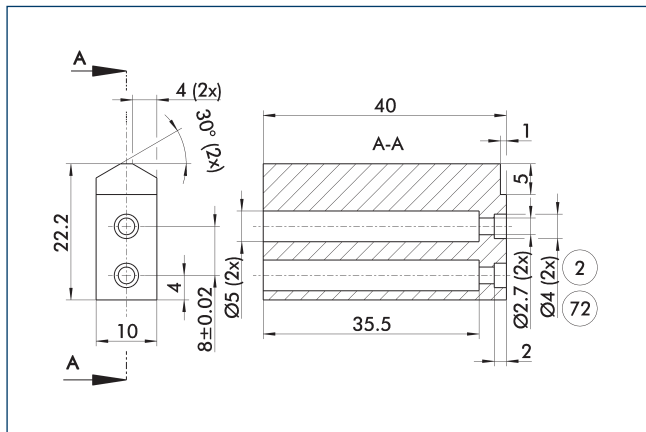
Description	ID	Grid dimension
		[mm]
Universal intermediate jaw		
UZB 40	0300040	1
Finger blank		
ABR-PGZN-plus 40	0300008	
SBR-PGZN-plus 40	0300018	

### Fields of application

Series	Size	Variant	Suitability
PGN-plus	40	-1 (6 bar)	■■■■
PGN-plus	40	-1-AS / -1-IS (6 bar)	■■■■
PGN-plus	40	-...-KVZ (6 bar)	□□□□
Legend			
■■■■	Can be combined without restrictions		
■■□□	Use with restrictions (see loading limits)		
□□□□	cannot be combined		

The load limits for describing the application limits can be found in the catalog chapter of the corresponding accessories. If the operating pressure is higher than 6 bar, suitability for use above the application limits must be checked.

## Finger blanks ABR- / SBR-PGZN-plus 40

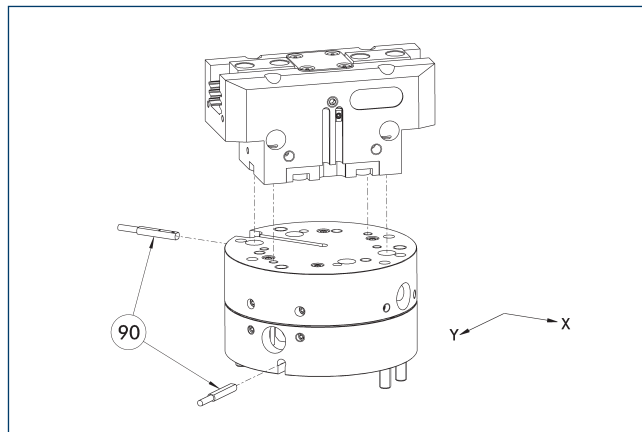


- ② Finger connection
- ⑦② Fit for centering sleeves

The drawing shows the finger blank which can be reworked by the customer.

Description	ID	Material	Scope of delivery
Finger blank			
ABR-PGZN-plus 40	0300008	Aluminum	1
SBR-PGZN-plus 40	0300018	Steel	1

## Compensation unit AGE-F



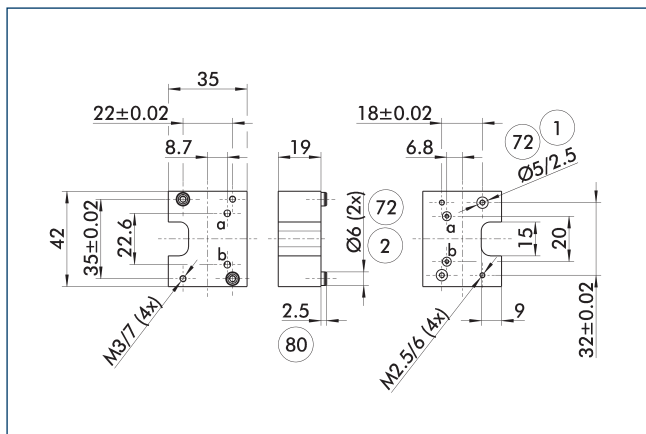
- ⑨⑩ Monitoring

The unit has direct connection possibilities for different grippers of the PGN-plus, PGN-plus-P and PZN-plus series. For more detailed information, please refer to the main view.

Description	ID	Compensation XY	Reset force	Often combined
		[mm]	[N]	
Compensation unit				
AGE-F-XY-031-1	0324900	± 1.5	1.5	
AGE-F-XY-031-2	0324901	± 1.5	4	
AGE-F-XY-031-3	0324902	± 1.5	5.5	●

- ① Due to the interfering contour, monitoring of the gripper is not possible.

## Adapter plate for PGN-plus 40



- ① Robot-side connection
- ② Tool-side connection
- ⑦② Fit for centering sleeves
- ⑧⑩ Depth of the centering sleeve hole in the counter part

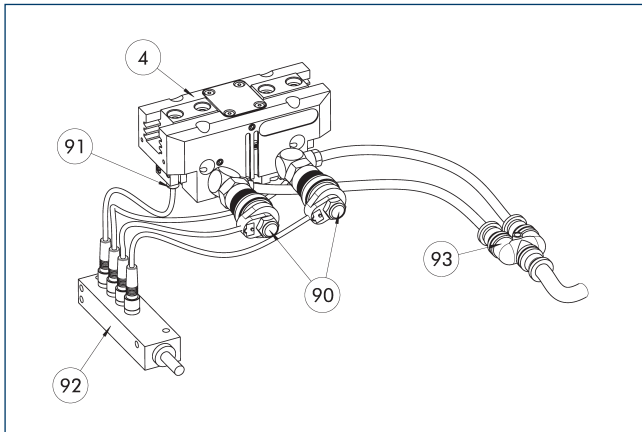
The adapter plate has integrated air feed-throughs in order to be able to use the hose-free direct connection of the appropriate gripper.

Description	ID
Tool side	
A-CWA-050-040-P	0305754

# PGN-plus 40

Universal gripper

## Attachment valves



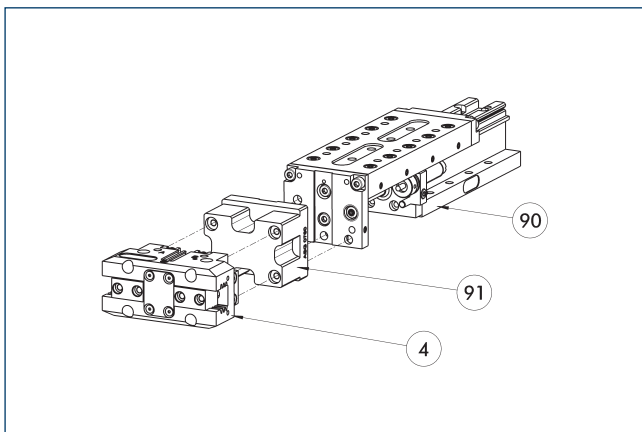
- ④ Grippers
- ⑨① Sensor
- ⑨② Sensor distributor
- ⑨③ Y distributor
- ⑨① Micro valves

The set of attachment valves reduces the compressed air consumption as there is no need to ventilate or bleed the supply lines. This can also reduce cycle time. The hose-free direct assembly of the micro valves reduces the hosing effort for the gripper. To further simplify electrical connection of the valves and sensors, their signals can be bundled via an optional distributor.

Description	ID	Often combined
Attachment valve		
ABV-MV15-M3	0303322	
ABV-MV15-M3-V2-M8	0303384	
ABV-MV15-M3-V4-M8	0303354	●
ABV-MV15-M3-V8-M8	0303355	

① A set of attachment valves ABV is required per actuator. The ABV set contains two 3/2 micro valves, an Y-distributor for compressed air supply and optionally a sensor distributor with two, four or eight inputs or outputs. Sensors for monitoring the gripper need to be ordered separately. Pneumatic hoses are not included in the scope of delivery.

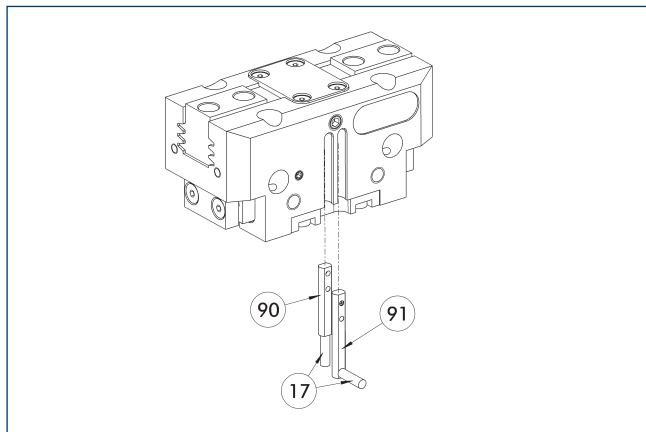
## Modular Assembly Automation



- ④ Grippers
- ⑨① ASG adapter plate
- ⑨① CLM/KLM/LM/ELP/ELM/ELS/HLM linear modules

Grippers and linear modules can be combined with standard adapter plates from the modular assembly system. For more information see our main catalog "Modular Assembly Automation".

## Electronic magnetic switch MMS



- ①⑦ Cable outlet
- ①⑨ Sensor MMS 22...-SA
- ①⑩ Sensor MMS 22..

End position monitoring for mounting in the C-slot.

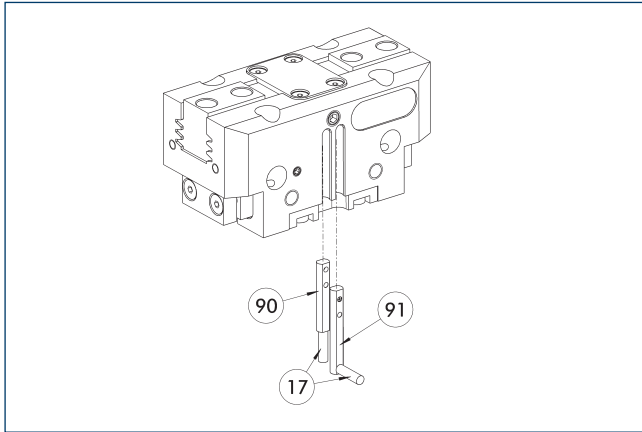
Description	ID	Often combined
<b>Electronic magnetic switch</b>		
MMS 22-S-M8-PNP	0301032	●
MMSK 22-S-PNP	0301034	
<b>Electronic magnetic switches with lateral cable outlet</b>		
MMS 22-S-M8-PNP-SA	0301042	●
MMSK 22-S-PNP-SA	0301044	
<b>Connection cables</b>		
KA BG08-L 3P-0300-PNP	0301622	●
KA BG08-L 3P-0500-PNP	0301623	
KA BW08-L 3P-0300-PNP	0301594	
KA BW08-L 3P-0500-PNP	0301502	
<b>clip for plug/socket</b>		
CLI-M8	0301463	
<b>Cable extension</b>		
KV BW08-SG08 3P-0030-PNP	0301495	
KV BW08-SG08 3P-0100-PNP	0301496	
KV BW08-SG08 3P-0200-PNP	0301497	●
<b>Sensor distributor</b>		
V2-M8	0301775	●
V4-M8	0301746	
V8-M8	0301751	

- ① Two sensors are required per unit for monitoring two positions. On option, extension cables and sensor distributors are available. Additional product variants of the sensor, and further information and technical data can be found in the catalog chapter sensor system.

# PGN-plus 40

Universal gripper

## Programmable magnetic switch MMS 22-PI1



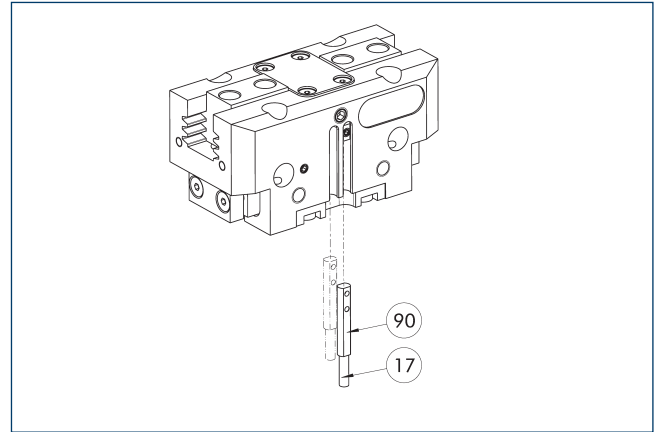
- ⑰ Cable outlet
- ⑲ Sensor MMS 22 ..-PI1-...-SA
- ⑨① Sensor MMS 22 PI1-...

Position monitoring with one programmable position per sensor and integrated electronic system in the sensor. Can be programmed using MT magnetic teaching tool (included in the scope of delivery) or ST plug teaching tool (optional). End position monitoring for mounting in the C-slot. If the ST plug teaching tools are listed in the table provided, teaching is only possible with the ST teaching tools.

Description	ID	Often combined
<b>Programmable magnetic switch</b>		
MMS 22-PI1-S-M8-PNP	0301160	●
MMSK 22-PI1-S-PNP	0301162	
<b>Programmable magnetic switch with lateral cable outlet</b>		
MMS 22-PI1-S-M8-PNP-SA	0301166	●
MMSK 22-PI1-S-PNP-SA	0301168	
<b>Programmable magnetic switch with stainless steel housing</b>		
MMS 22-PI1-S-M8-PNP-HD	0301110	●
MMSK 22-PI1-S-PNP-HD	0301112	

- ① Two sensors are required per unit for monitoring two positions. On option, extension cables and sensor distributors are available. Additional product variants of the sensor, and further information and technical data can be found in the catalog chapter sensor system.

## Programmable magnetic switch MMS 22-PI2



- ⑰ Cable outlet
- ⑨① MMS 22...-PI2-... sensor

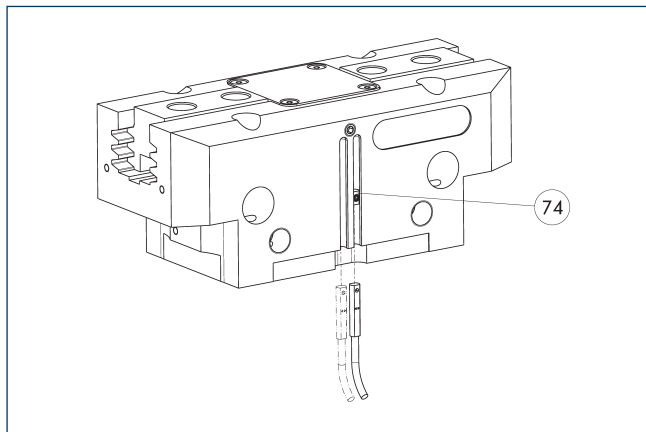
Position monitoring with two programmable positions per sensor and electronics built into the sensor. Can be programmed using MT magnetic teaching tool (included in the scope of delivery) or ST plug teaching tool (optional). End position monitoring for mounting in the C-slot. If the ST plug teaching tools are listed in the table provided, teaching is only possible with the ST teaching tools.

Description	ID	Often combined
<b>Programmable magnetic switch</b>		
MMS 22-PI2-S-M8-PNP	0301180	●
MMSK 22-PI2-S-PNP	0301182	
<b>Programmable magnetic switch with lateral cable outlet</b>		
MMS 22-PI2-S-M8-PNP-SA	0301186	●
MMSK 22-PI2-S-PNP-SA	0301188	
<b>Programmable magnetic switch with stainless steel housing</b>		
MMS 22-PI2-S-M8-PNP-HD	0301130	●
MMSK 22-PI2-S-PNP-HD	0301132	

- ① One sensor is required per unit for monitoring two positions. Extension cables and sensor distributors are optionally available. Additional product variants of the sensor, and further information and technical data can be found in the catalog chapter sensor systems.



**MMS-P programmable magnetic switch**



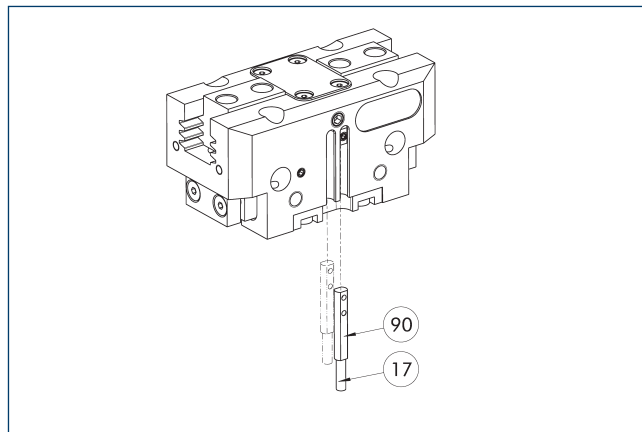
74 Limit stop for sensor

Position monitoring with two programmable positions per sensor. End position monitoring for mounting in the C-slot.

Description	ID	Often combined
Programmable magnetic switch		
MMSK-P 22-S-PNP	0301371	
MMS-P 22-S-M8-PNP	0301370	●
Connection cables		
KA BG08-L 4P-0500	0307767	●
KA BG08-L 4P-1000	0307768	
KA BW08-L 4P-0500	0307765	
KA BW08-L 4P-1000	0307766	
clip for plug/socket		
CLI-M8	0301463	
Sensor distributor		
V2-M8-4P-2XM8-3P	0301380	

① One sensor is required per unit for monitoring two positions. Extension cables and sensor distributors are optionally available. Additional product variants of the sensor, and further information and technical data can be found in the catalog chapter sensor systems.

**MMS-A analog position sensor**



17 Cable outlet

90 MMS 22-A-... sensor

No-contact measuring, analog multi-position monitoring for any number of positions.

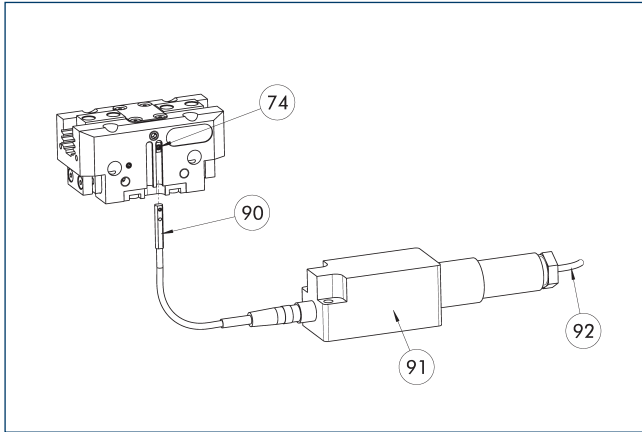
Description	ID	
Analog position sensor		
MMS 22-A-10V-M08	0315825	
MMS 22-A-10V-M12	0315828	

① One sensor is required for each gripper. No additional mounting kit is required – the gripper is equipped for use of the sensor by default. Further information and technical data can be found in the catalog chapter sensor systems.

# PGN-plus 40

Universal gripper

## Flexible position sensor with MMS-A



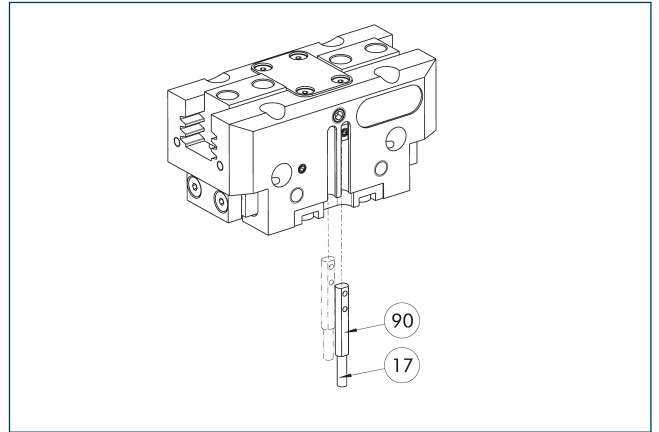
- ⑦④ Limit stop for sensor
- ⑨① FPS-F5 evaluation electronic
- ⑨① MMS 22-A-... sensor
- ⑨② Connection cables

Flexible position monitoring of up to five positions.

Description	ID
<b>Analog position sensor</b>	
MMS 22-A-05V-M08	0315805
<b>Evaluation electronics</b>	
FPS-F5	0301805
<b>Connection cables</b>	
KA BG16-L 12P-1000	0301801

- ① When using an FPS system, one MMS 22-A-05V and one electronic processor (FPS-F5) are required per each gripper, as well as a mounting kit (AS), if listed. Cable extensions (KV) are optionally available – see catalog chapter "Accessories."

## Programmable magnetic switch MMS-IO-Link



- ①⑦ Cable outlet
- ⑨① Sensor MMS 22-IO-Link

Sensor for multi-position monitoring through detection of the complete gripper stroke. The sensor is mounted directly in the C-slot of the gripper. Sensor programming on the gripper takes place via the IO-Link interface or the MT magnetic teach tool (included in scope of delivery). An IO-Link master is required for operation.

Description	ID
<b>Programmable magnetic switch</b>	
MMS 22-IO-Link-M08	0315830
MMS 22-IO-Link-M12	0315835

- ① One sensor is required for each gripper. No additional mounting kit is required – the gripper is equipped for use of the sensor by default. Further information and technical data can be found in the catalog chapter sensor systems.





**SCHUNK GmbH & Co. KG**  
**Spann- und Greiftechnik**

Bahnhofstr. 106 - 134  
D-74348 Lauffen/Neckar  
Tel. +49-7133-103-0  
Fax +49-7133-103-2399  
info@de.schunk.com  
schunk.com

Folgen Sie uns | *Follow us*

